

This form is intended to fulfill the requirements of Chapter A-E 7.08 (3)(a) thru (i) U.S. Public Land Survey Monument Location Record, Wisconsin Administrative Code. Use the reverse side of form for continuation.

U.S. PUBLIC LAND SURVEY MONUMENT LOCATION RECORD

USPLS CORNER: EAST WITNESS MC SECTION: 19 TOWNSHIP: 37 NORTH RANGE: 8 EAST

NAME OF WATERWAY FOR M.C. CORNER: COON LAKE SECTION LINE: NORTH

~~(CITY/VILLAGE)~~(TOWN) OF: NEWBOLD COUNTY OF: ONEIDA

Description of monument found or placed and all other evidence used as the basis for monument location; including monuments and related measurements required if the corner location was reestablished by lost corner proportionate methods. Also indicate name of original surveyor, original survey date and the corner monument, bearing trees, witness or other reference monuments established; including measured bearing and distance ties, from available records.

Found and accepted a standard 2" dia. aluminum pipe monument with stamped Oneida County cap 7" up as set and referenced by Foltz & Associates, Inc. of Minocqua, Wisconsin on October 15, 2001, for which I am to prepare and file for record; I also found and checked all 4 of their BTs noted herein.

In July, 1863, William E. Daugherty/GLO set a wood post as the original corner and marked OBTs: a 7" Py N26°E 14 links and a 7" Py S81°E 26 links; all are now obliterated.

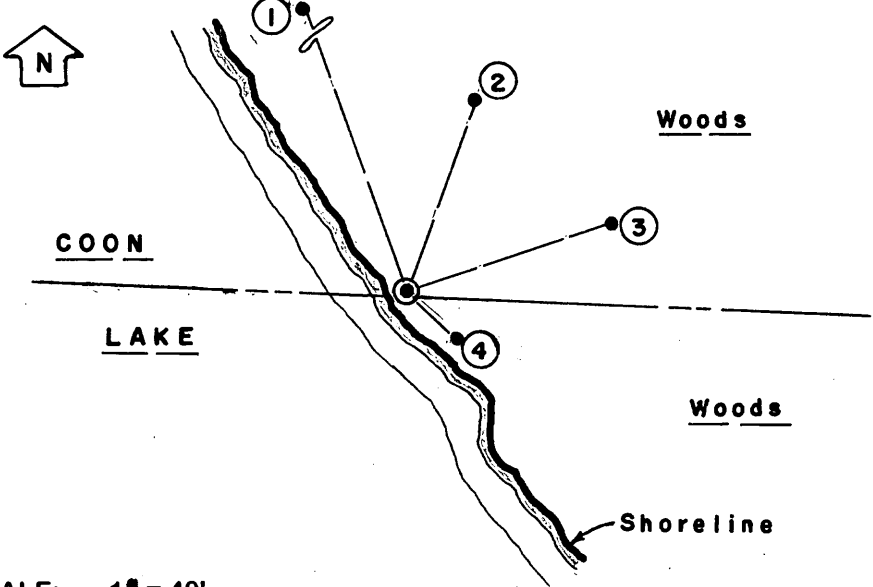
In February 1951, F.R. Wincentsen/RLS155 notes an iron pipe at this corner per Pages 116-121 of Wincentsen's Book 1 field notes and Plat of Survey B-1354 filed in Oneida County survey records.

In August 1979, Joseph C. Kirby/RLS 253 notes a 1" iron pipe set at this corner per Plat of Survey filed as C-747 in Oneida County survey records and Drawing No. 6984 filed in Genisot & Associates, Inc. records of Rhinelander, Wisconsin.

On October 15, 2001, Foltz & Associates, Inc. of Minocqua, Wisconsin replaced an uncapped 1" dia. iron pipe found at this corner with a standard 2" dia. by 30" long aluminum pipe monument with stamped Oneida County cap and also set a standard white poly 'T' marker post 2'+- East of the corner monument; their ties to four(4) new BTs verified OK for filing this location record as noted below. Corner is 2.5' East of lakeshore bearing S35°E this date.

This recovery completed October 17, 2002; there were no direct witnesses.

Plan view map of monument location with bearing and distance ties to a minimum of four(4) described witness or reference monuments of concrete, natural stone, iron, live bearing trees or equivalent material. If applicable, also show a minimum of two(2) bearing and distance ties to any other monument found and not accepted; including the bearing and distance from the accepted monument.

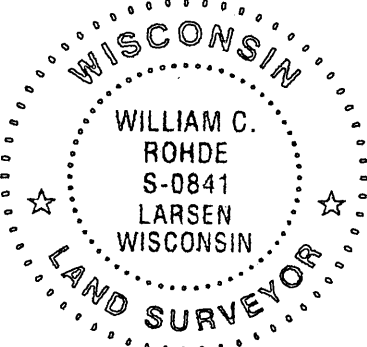


- WITNESS MONUMENT TIES:**
- ① 16" Pw BT found with 40d aluminum nail in left face N20°W 121.76'.
 - ② 7" Mr BT found with mag nail in right face N20°E 42.26'.
 - ③ 18" Pw BT found with mag nail in left face N70°E 44.82'.
 - ④ 19" Pw BT found with mag nail in right face S50°E 14.25'.
- Both upper and lower face blazes on all BTs by Foltz & Associates, Inc. found open. Tie distances are to nails set by Foltz and found this date in all BTs as noted above.

SCALE: 1" = 40'

Unless otherwise indicated, all bearing tree ties are to a .25" dia. by 2.5" long PK nail with a 1.25" dia. steel washer driven into unblazed right face and a .25" dia. by 2.5" long PK nail with a 2" dia. steel washer stamped BT is also driven into unblazed face of bearing tree at DBH; the basis for measured bearings is by compass to nearest degree and all tie distances are measured horizontal by steel tape corrected to nearest 1/100th feet at standard temperature of 68° F.

RLS SEAL:



LAND SURVEYOR CERTIFICATE:

I, William C. Rohde, hereby certify that I am duly licensed as a Professional Land Surveyor in the State of Wisconsin; that this USPLS monument location was determined by me and/or under my direct supervision and control; and that this U.S. Public Land Survey Monument Location Record is true and correct to the best of my knowledge and belief.

Signed: *William C. Rohde*
William C. Rohde RLS 841

	T 37N	19	
		R 8E	

JUN 12 2023

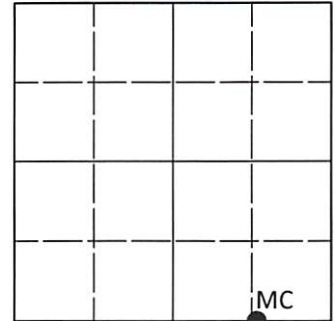
KYLE J. FRANSON
REGISTER OF DEEDS

U.S. PUBLIC LAND SURVEY MONUMENT RECORD

Note: This form is intended and designed to fulfill all requirements of Wisconsin Administrative Code, Chapter A-E 7.08 U.S. Public Land Survey Monument Record (3)(a-i).

(a) CORNER LOCATION
Meander Cor. of Secs. 18 & 19
Township 37 North
Range 8 East of the 4th P.M.
Town of Newbold
County of Oneida

WISCRS - Oneida County
N: 182,879.05 USft
E: 231,862.03 USft
Datum: NAD 83(2011) ep. 2010.00
GNSS Method: RTN - Direct
GNSS Control: WISCORS VRS



Sec. 18, T. 37 N., R. 8 E.

(b)(f)(g)(h) Description of monument found at this corner and if it was accepted, state all evidence (material, testimonial, occupational, plats, records, other monuments) used as a basis for accepting. If not accepted or if nothing was found, state evidence used as basis for establishing location. If re-established through lost corner proportionate methods, indicate all monuments, distances and directions used to establish. Indicate type of monument and sign post found or set.

This record is a perpetuation of the following land corner document(s):

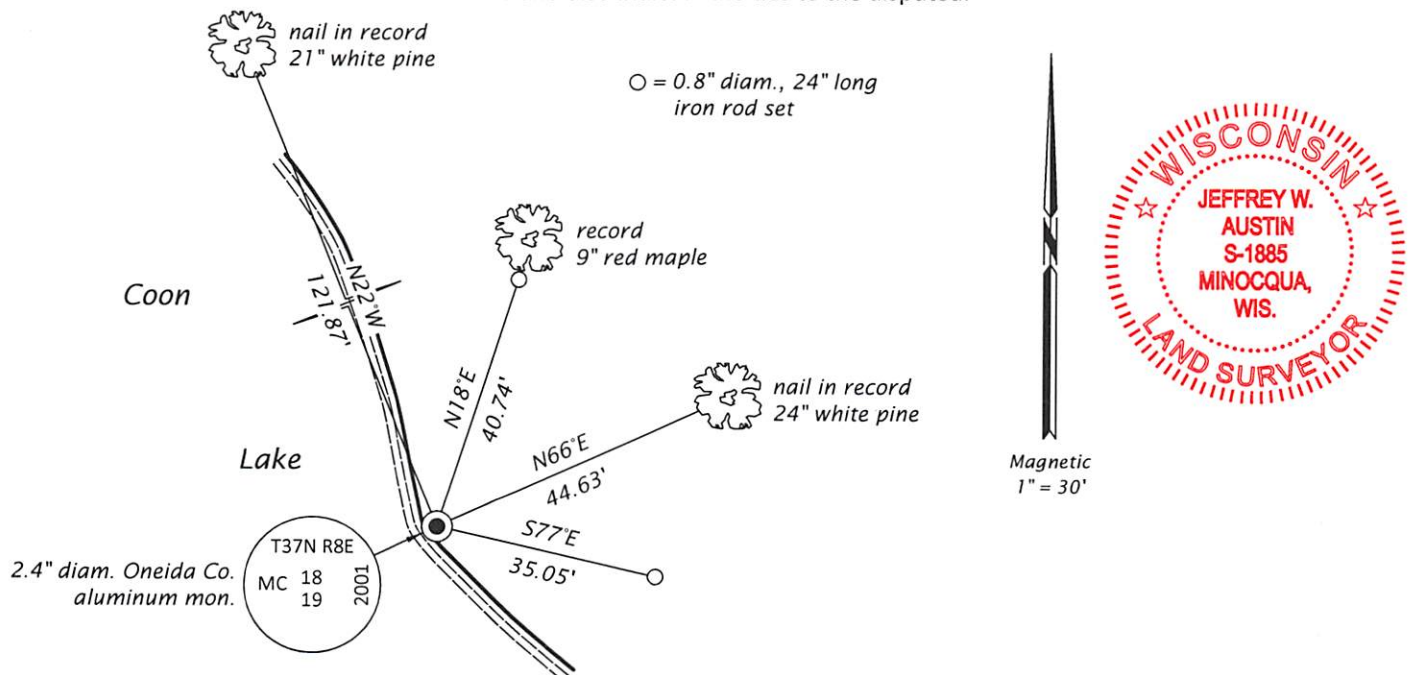
March 1, 2003: USPLS Monument Record by William C. Rohde, filed in Oneida County

A complete history of the corner can be found on the previous land corner document(s). I accept the record activity as a true and faithful perpetuation or reestablishment of the original corner location and further perpetuate it as described below.

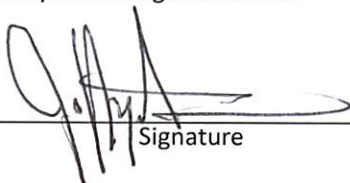
May 12, 2023: I found and accepted the record monument, a 2.4" diam. aluminum pipe, firmly set, with a 3.3" diam. Oneida Co. aluminum cap projecting 6" above the ground surface. The #4 record bearing tree is standing dead. I found or established accessories as indicated below. I found a white vinyl sign post bearing East, 1.8 ft.

The coordinate value shown is the weighted mean of two or more GNSS observations at markedly different times satisfying the accuracy requirements defined and qualified in the 2022 Oneida County Fee Schedule for USPLS Corners.

(c)(d)(e) Plan view of corner with ties to at least 4 witness monuments. If in disagreement with previously established corner, show the distances between the two corners and also indicate the ties to the disputed.



(i) I, Jeffrey W. Austin, Professional Land Surveyor No. S-1885, hereby certify that the corner location on this record was determined by me or under my direction and control and that this U.S. Public Land Survey Monument Record is correct and complete to the best of my knowledge and belief.


Signature

JUNE 1, 2023
Date