

This form is intended to fulfill the requirements of Chapter A-E 7.08 (3)(a) thru (i) U.S. Public Land Survey Monument Location Record, Wisconsin Administrative Code. Use the reverse side of form for continuation.

**U.S. PUBLIC LAND SURVEY MONUMENT LOCATION RECORD**

USPLS CORNER: WEST WITNESS MC SECTION: 19 TOWNSHIP: 37 NORTH RANGE: 8 EAST  
 NAME OF WATERWAY FOR M.C. CORNER : COON LAKE SECTION LINE: NORTH  
 (CITY)(VILLAGE)(TOWN) OF: NEWBOLD COUNTY OF: ONEIDA

Description of monument found or placed and all other evidence used as the basis for monument location; including monuments and related measurements required if the corner location was reestablished by lost corner proportionate methods. Also indicate name of original surveyor, original survey date and the corner monument, bearing trees, witness or other reference monuments established; including measured bearing and distance ties, from available records.

Found and accepted an old uncapped 1.25" dia. blue painted iron pipe 3" up in a 9" dia. concrete base 3" below grade, so I left in place and placed a standard 2" dia. by 8" long section cut from a 30" aluminum pipe monument with stamped Oneida County cap over the old iron pipe to 5" above grade; I slit and flared out the bottom end of the aluminum pipe so I could tamp soil backfill upon to secure and also placed several rocks as a cairn at grade around the monument set to further secure for new ties. The corner falls 13.5" West on a sloping bank up from existing lakeshore bearing S35°W.

In July 1863, William E. Daugherty/GLO set a wood post as original corner and marked OBTs: a 10" Aspen N31°W 32 links and an 8" Birch S74°W 49 links; all are now obliterated.

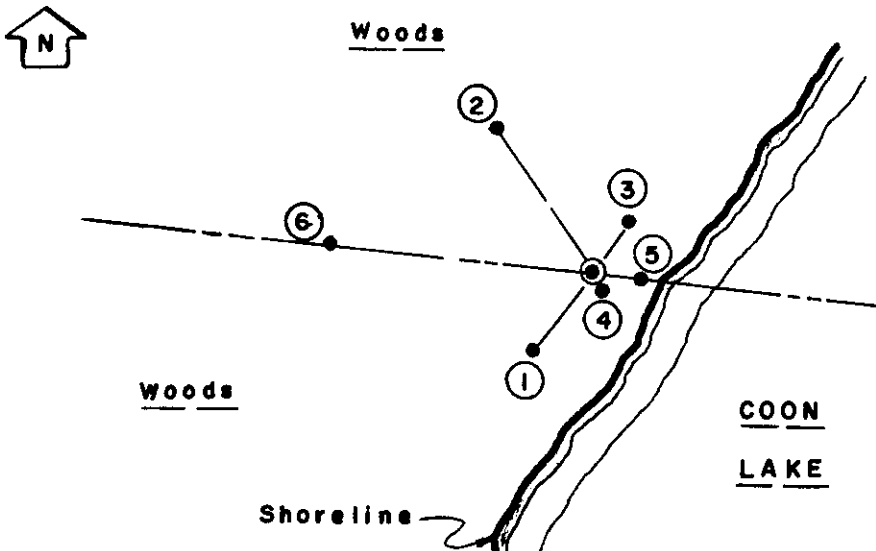
In February 1951, F.R. Wincentsen/RLS 155 notes an iron pipe at this corner per Pages 116-121 of Wincentsen Book 1 field notes and Plat of Survey B-1354 filed in Oneida County survey records.

In July 1995, Kip W. Soder/RLS 1731 notes a 1.5" dia. iron pipe found at this corner per legend on Plat of Survey filed as B-3271 in Oneida County survey records.

I set a standard white poly 'T' marker post 10" East of the corner monument .

This recovery completed October 17, 2002 and directly witnessed by North adjoiner/owner Frances Shaeffer.

Plan view map of monument location with bearing and distance ties to a minimum of four(4) described witness or reference monuments of concrete, natural stone, iron, live bearing trees or equivalent material. If applicable, also show a minimum of two(2) bearing and distance ties to any other monument found and not accepted; including the bearing and distance from the accepted monument.



**WITNESS MONUMENT TIES:**

- ① New 9" Pw BT S38°W 19.93'.
- ② New 10" Pw BT N35°W 35.57'
- ③ New 5" Pw BT N35°E 11.70'.
- ④ New 13" Pw BT S42°E 3.21'.
- ⑤ Old 1" oval dia. uncapped iron tube/pipe found 6" up S84°E 9.78'.
- ⑥ Old 1" dia. uncapped iron pipe found 7" up N84°W 55.25'.

SCALE: 1" = 40'

Unless otherwise indicated, all bearing tree ties are to a .25" dia. by 2.5" long PK nail with a 1.25" dia. steel washer driven into unblazed right face and a .25" dia. by 2.5" long PK nail with a 2" dia. steel washer stamped BT is also driven into unblazed face of bearing tree at DBH; the basis for measured bearings is by compass to nearest degree and all tie distances are measured horizontal by steel tape corrected to nearest 1/100th feet at standard temperature of 68° F.

RLS SEAL:

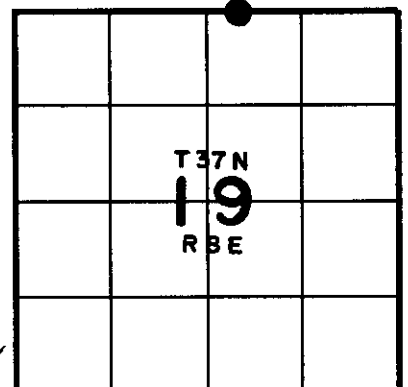


**LAND SURVEYOR CERTIFICATE:**

I, William C. Rohde, hereby certify that I am duly licensed as a Professional Land Surveyor in the State of Wisconsin; that this USPLS monument location was determined by me and/or under my direct supervision and control; and that this U.S. Public Land Survey Monument Location Record is true and correct to the best of my knowledge and belief.

Signed *William C. Rohde*  
 William C. Rohde RLS 841

Date Signed: March 1, 2002



SECTION LOCATION MAP  
 INDEX NO. N 3-4

3708180016

JUN 12 2023

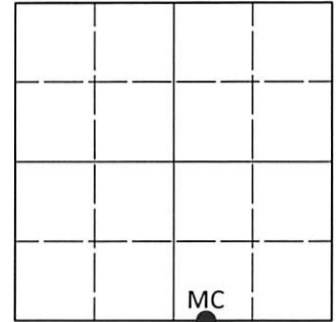
KYLE J. FRANSON  
REGISTER OF DEEDS

**U.S. PUBLIC LAND SURVEY MONUMENT RECORD**

Note: This form is intended and designed to fulfill all requirements of Wisconsin Administrative Code, Chapter A-E 7.08 U.S. Public Land Survey Monument Record (3)(a-i).

(a) CORNER LOCATION  
Meander Cor. of Secs. 18 & 19  
Township 37 North  
Range 8 East of the 4th P.M.  
Town of Newbold  
County of Oneida

WISCRS - Oneida County  
N: 183,020.36 USft  
E: 231,013.94 USft  
Datum: NAD 83(2011) ep. 2010.00  
GNSS Method: RTN - Offset  
GNSS Control: WISCORS VRS



Sec. 18, T. 37 N., R. 8 E.

(b)(f)(g)(h) Description of monument found at this corner and if it was accepted, state all evidence (material, testimonial, occupational, plats, records, other monuments) used as a basis for accepting. If not accepted or if nothing was found, state evidence used as basis for establishing location. If re-established through lost corner proportionate methods, indicate all monuments, distances and directions used to establish. Indicate type of monument and sign post found or set.

This record is a perpetuation of the following land corner document(s):

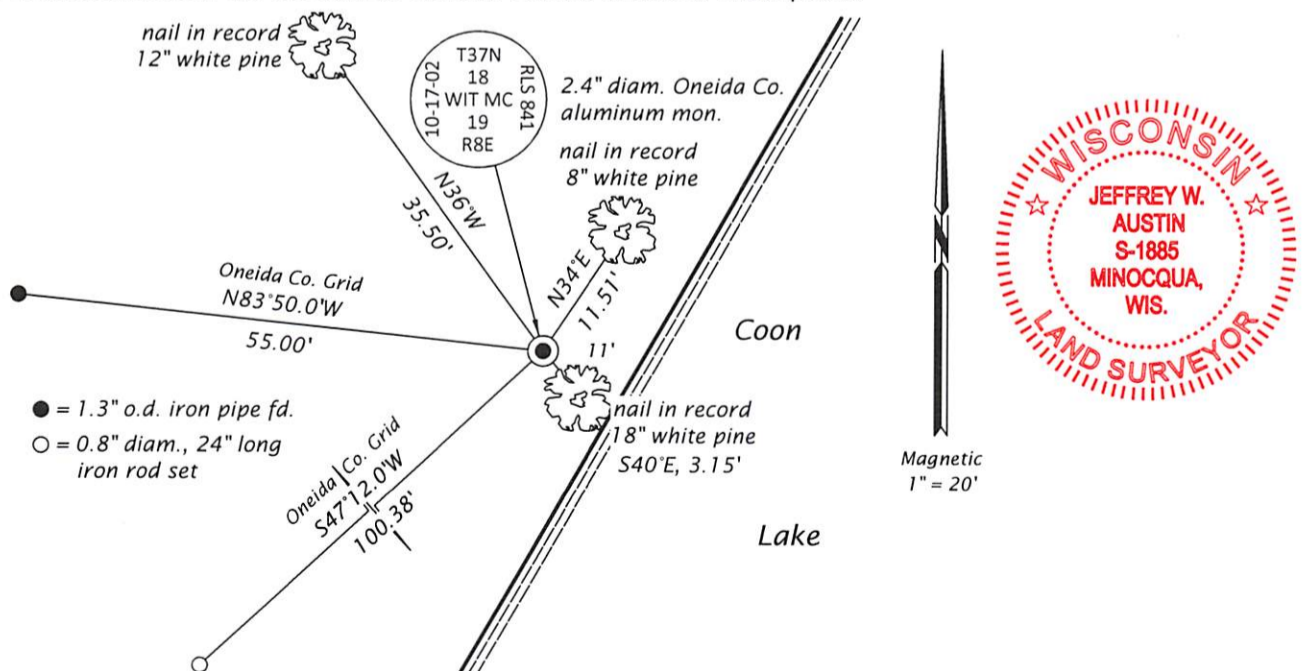
March 1, 2002: USPLS Monument Record by William C. Rohde, filed in Oneida County

A complete history of the corner can be found on the previous land corner document(s). I accept the record activity as a true and faithful perpetuation or reestablishment of the original corner location and further perpetuate it as described below.

May 12, 2023: I found and accepted the record monument, a 2.4" diam. aluminum pipe, firmly set, with a 3.3" diam. Oneida Co. aluminum cap projecting 2" above the ground surface. The #1 record bearing tree is standing dead. I found or established accessories as indicated below. I found a white vinyl sign post bearing East, 0.8 ft.

The coordinate value shown has been determined by traversing from two or more GNSS offset points satisfying the accuracy requirements defined and qualified in the 2022 Oneida County Fee Schedule for USPLS Corners.

(c)(d)(e) Plan view of corner with ties to at least 4 witness monuments. If in disagreement with previously established corner, show the distances between the two corners and also indicate the ties to the disputed.



(i) I, Jeffrey W. Austin, Professional Land Surveyor No. S-1885, hereby certify that the corner location on this record was determined by me or under my direction and control and that this U.S. Public Land Survey Monument Record is correct and complete to the best of my knowledge and belief.

*[Handwritten Signature]*  
Signature

JUNE 1, 2023  
Date