

CERTIFIED LAND CORNER RESTORATION

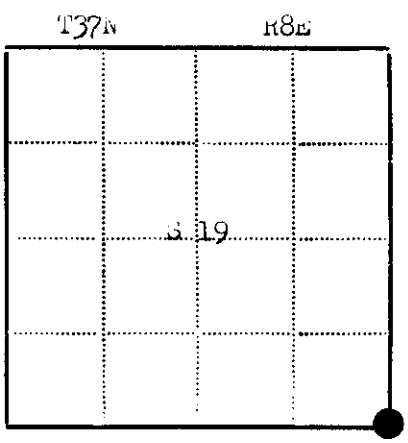
State of Wisconsin }
County of Oneida } ss.

I James D. Rein, do hereby certify that on the 23th day of August, 1979, I found evidence of the Section 19, 20, 29 and 30 corner of Township 37 North, Range 8 East, Fourth Principal Meridian, as described hereon; and that from this evidence I established a new monument and accessories as described hereon to perpetuate the original location of this corner:

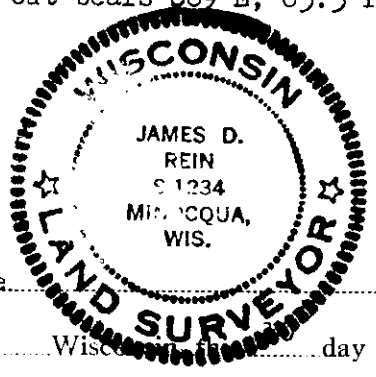
Description of original monument and accessories and subsequent restorations:
wood Post set by William E. Dougherty, Deputy Surveyor July 24, 1863, witnessed by an 8" white pine S62°W, 17 lks (11.22 feet) and by an 8" birch N54°E, 10 lks (6.60 feet), D. H. Vaughn, Oneida County Surveyor found original trees in January 12, 1899 Keith Hall, Surveyor in January 1944 found original 8" white pine Stump S62°W, 11.2 feet as shown on his map for Mr. Jeffris. He made new bearings as follows: 5" oak, N78°W, 19.5 feet and a 4" oak N67°E, 8.4 feet.

Description of corner evidence found:
True position for section corner was determined by extending the south line of Section 19 east from the South one-quarter corner through the 1/8 to intersect with an extension of the North meander corner on the east line of Section 19, South through the South meander corner. Position for corner and Keith Hall's bearing trees fall in a road bed area. A 2" diameter iron pipe in roadbed bears N57°-07'-36"W, 13.41 feet.

Description of monument and accessories I established to perpetuate the location of this corner:
Set a Cast Aluminum Oneida County survey marker with 4" diameter cap down 8 inches in gravel road bed, 11 feet east of centerline. Set P.A. nail in existing B.T. 11" maple N14°W, 41.91 feet.
made bearing trees with P.A.s set in lower blaze as follows:
9" maple S45°W, 44.50 feet
12" maple N84°E, 37.86 feet
A possible bearing tree, 13" oak with face chopped out bears S89°E, 63.3 feet



● - Corner monument restored
□ -



Resident witnesses none
Dated at Minocqua Wisconsin, day of September 1979.

Signature James D. Rein Title Reg. Land Surveyor
(County Surveyor, Registered Land Surveyor, or other duly authorized official)

Surveyors Registration No. S-1234

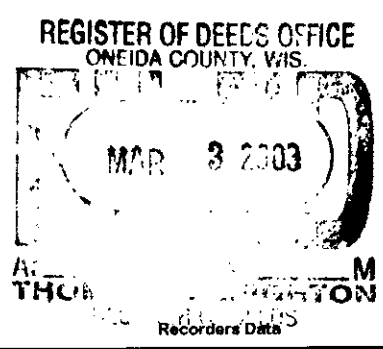
Office of REGISTER OF DEEDS County of Oneida

I hereby certify that the within instrument was filed in this office for record on the 17th day of September 1982, and was filed in Book No. Page No. of County Records.

Signature Doris Verage Kuehn Title REGISTER OF DEEDS

Township, Range, Section, Index No., Page No.

3708190000



This form is intended to fulfill the requirements of Chapter A-E 7.08 (3)(a) thru (i) U.S. Public Land Survey Monument Location Record, Wisconsin Administrative Code. Use the reverse side of form for continuation.

U.S. PUBLIC LAND SURVEY MONUMENT LOCATION RECORD

USPLS CORNER: NW SECTION CORNER SECTION: 29 TOWNSHIP: 37 NORTH RANGE: 8 EAST

NAME OF WATERWAY FOR M.C. CORNER : N/A SECTION LINE: N/A

~~(CITY)(VILLAGE)(TOWN)~~ OF: NEWBOLD COUNTY OF: ONEIDA

Description of monument found or placed and all other evidence used as the basis for monument location; including monuments and related measurements required if the corner location was reestablished by lost corner proportionate methods. Also indicate name of original surveyor, original survey date and the corner monument, bearing trees, witness or other reference monuments established; including measured bearing and distance ties, from available records.

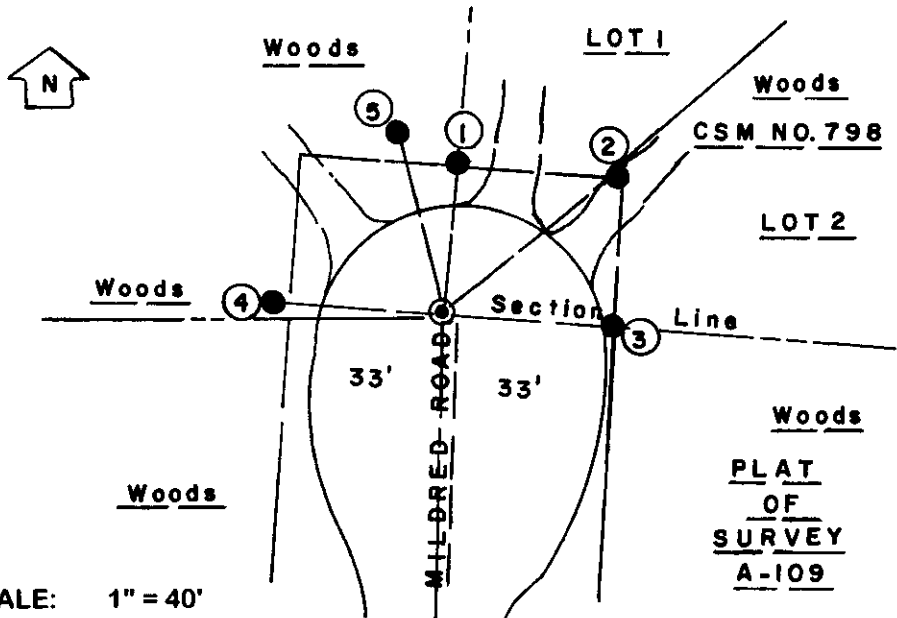
THIS CORNER WAS RE-REFERENCED WITH THE VERBAL APPROVAL OF ONEIDA COUNTY SURVEYOR MICHAEL J. ROMPORTL, AS RECORD ONEIDA CAPPED ALUMINUM MONUMENT AT CORNER AND ALL BUT 1 OF 5 REFERENCES HAVE BEEN DESTROYED; UNDOUBTEDLY DUE TO ROADWAY CONSTRUCTION.

This corner was last referenced for record by James D. Rein/RLS 1234 per his land corner location certificate filed September 17, 1982 in Oneida County records, which should be referred to for historical documentation.

I found, accepted and removed a 3/16" dia. x 3/4" long PK nail from existing cul-du-sac blacktop pavement and reset the corner location with a 1/2" dia. x 4.5" long tapered stainless steel pin with geared top flush to pavement; I verified the corner location by measurements from iron pipe monuments found North and NE for Oneida County Certified Survey Maps No. 798 and 1285. No positive MLR was detected below roadway after removing the PK nail found at the corner location; therefore indicating that record aluminum monument at corner had been destroyed. I also did not detect an MLR below roadway for a 2" iron pipe noted by Rein NW of the corner. I did find Rein's remaining 13" Oak BT S82°E with upper & lower face blazes open and scribed; however, his tie distance of 63.3' in error as I measured 49.70' to PK nail/washer set 54" up in left face as a new tie point. The record 63.3' tie was undoubtedly measured from the 2" iron pipe noted by Rein 13.4'NW of the corner, which when added to my tie distance would equal 63 feet. The old BT is North trunk of a clump of 4. I painted old blazes blaze orange and nailed a standard BT sign to upper face.

This recovery completed October 3, 2002; there were no direct witnesses other than passing vehicle/pedestrian traffic.

Plan view map of monument location with bearing and distance ties to a minimum of four(4) described witness or reference monuments of concrete, natural stone, iron, live bearing trees or equivalent material. If applicable, also show a minimum of two(2) bearing and distance ties to any other monument found and not accepted; including the bearing and distance from the accepted monument.

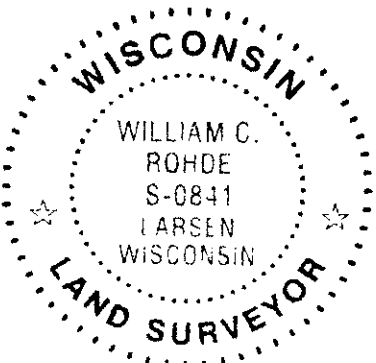


- WITNESS MONUMENT TIES:**
- ① Old 1" dia. uncapped iron pipe found 2" up N05°E 30.88'.
 - ② Old 3/4" dia. uncapped iron pipe found flush N50°E 44.98'.
 - ③ 5/8" dia. x 24" long rebar set with yellow poly RM cap 1" up S86°E 33.00'.
 - ④ 5/8" dia. x 24" long rebar set with yellow poly RM cap 1" up N86°W 35.25'.
 - ⑤ New 6" Pr BT N15°W 38.55'.
- I set a standard white poly 'T' marker post 5" East of East rebar reference. No. 3 reference rebar was set on section line per record CSM's.

SCALE: 1" = 40'

Unless otherwise indicated, all bearing tree ties are to a .25" dia. by 2.5" long PK nail with a 1.25" dia. steel washer driven into unblazed right face and a .25" dia. by 2.5" long PK nail with a 2" dia. steel washer stamped BT is also driven into unblazed face of bearing tree at DBH; the basis for measured bearings is by compass to nearest degree and all tie distances are measured horizontal by steel tape corrected to nearest 1/100th feet at standard temperature of 68° F.

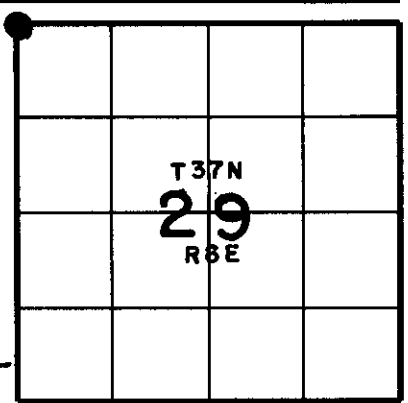
RLS SEAL:



LAND SURVEYOR CERTIFICATE:

I, William C. Rohde, hereby certify that I am duly licensed as a Professional Land Surveyor in the State of Wisconsin; that this USPLS monument location was determined by me and/or under my direct supervision and control; and that this U.S. Public Land Survey Monument Location Record is true and correct to the best of my knowledge and belief.

Signed: *William C. Rohde*
William C. Rohde RLS 841



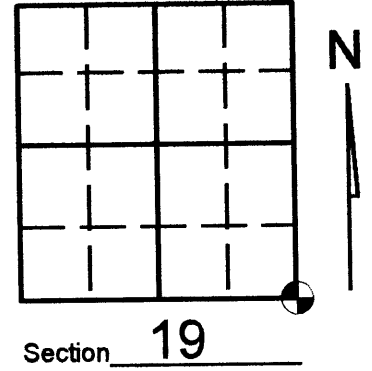
SECTION LOCATION MAP
INDEX NO. R 5

U.S. PUBLIC LAND SURVEY MONUMENT RECORD

Note: This form is intended and designed to fulfill all requirements of Wisconsin Administrative Code, Chapter A-E 7.08 U.S. Public Land Survey Monument Record (3)(a)(b)(c)(d)(e)(f)(g)(h)(i). An additional sheet may be added if necessary to conform with said requirements.

(a) Corner location: Township 37 North
Range 08 (Eas) West

Town/City/Village NEWBOLD
County ONEIDA



(b) (f) (g) (h) Description of monument found at this corner and if it was accepted, state all evidence (material, testimonial, occupational, plats, records, other monuments) used as a basis for accepting. If not accepted or if nothing was found, state evidence used as basis for establishing location. If reestablished through lost corner proportionate methods, indicate all monuments, distances and directions used to establish. Indicate type of monument found or set and sign post.

See U.S. Land Survey Monument Record form R-5 by Jim Rein for history of corner, dated Sept. 1982

March 1, 2003, See corner form R-5 by William Rohde.

December 2006, Kevin Bixby found two p.k nails in the culdesac area of Mildred Road representing the two corners as noted by William Rohde and Jim Rein. It is Bixby Land Surveying Inc.'s opinion that the intent of William Rohde's R-5 form was to witness Jim Rein's R-5 corner but instead witnessed the corner bearing N63°15'15"W, 13.83 feet as shown below. Both corners have been used within this area for property survey's and the intent of this corner form is to preserve both corners for future land surveying services.

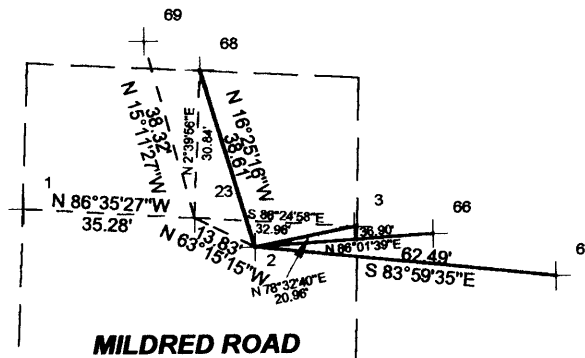
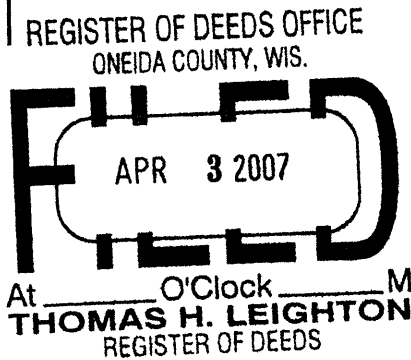
(c) (d) (e) Plan view of corner with ties to at least 4 witness monuments. If in disagreement with previously established corner, show the distances between the two corners and also indicate the ties to the disputed corner.

NOTE:

SCALE: 1"=40'

Angles and distances measured with total station. Said angles and distances measured to heads of spikes set in side of bearing trees.

Point number 23 = corner witnessed by William Rohde
Point number 2 = corner witnessed by Jim Rein

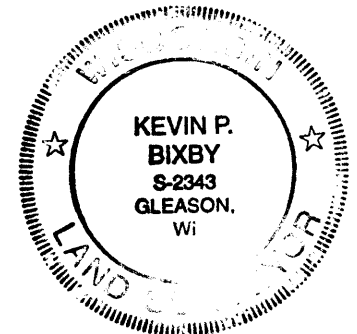


LEGEND

- 2,23 = EXISTING P.K. NAILS
- 66= SET SPIKE IN 10" MAPLE EXISTING B.T. - REIN
- 67= SET SPIKE IN 18" OAK EXISTING B.T. - REIN
- 68 = EXISTING 1" IRON PIPE ROHDE
- 3,1 = EXISTING 3/4" CAPPED I.P. - ROHDE
- 69 = EXISTING P.K. NAIL 6" R. PINE - ROHDE

(i) I, KEVIN P. BIXBY

(type or print name) certify that the corner location on this record was determined by me or under my direction and control and that this U.S. Public Land Survey Monument Record is correct and complete to the best of my knowledge and belief.



Kevin P. Bixby Signature 03/13/07 Date

Stamp

3708190000

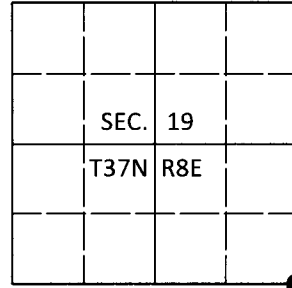
Index No. R 5

U.S. PUBLIC LAND SURVEY MONUMENT RECORD

Note: This form is intended and designed to fulfill all requirements of Wisconsin Administrative Code, Chapter A-E 7.08 U.S. Public Land Survey Monument Record (3)(a-i).

(a) CORNER LOCATION
 Cor. of Secs. 19, 20, 29 & 30
 Township 37 North
 Range 8 East of the 4th P.M.
 Town of Newbold
 County of Oneida

WISCORS - Oneida County
 N: 177,810.55 USft
 E: 232,456.82 USft
 Datum: NAD 83(2011)
 GNSS Method: RTN - Direct
 GNSS Control: WISCORS VRS



(b) HISTORY OF ORIGINAL CORNER ESTABLISHMENT

Original Surveyor:

Original Accessories:

Date of Survey

Commenced:
 Completed:

See previous monument record(s)

(b)(f)(g)(h) Description of monument found at this corner and if it was accepted, state all evidence (material, testimonial, occupational, plats, records, other monuments) used as a basis for accepting. If not accepted or if nothing was found, state evidence used as basis for establishing location. If re-established through lost corner proportionate methods, indicate all monuments, distances and directions used to establish. Indicate type of monument and sign post found or set.

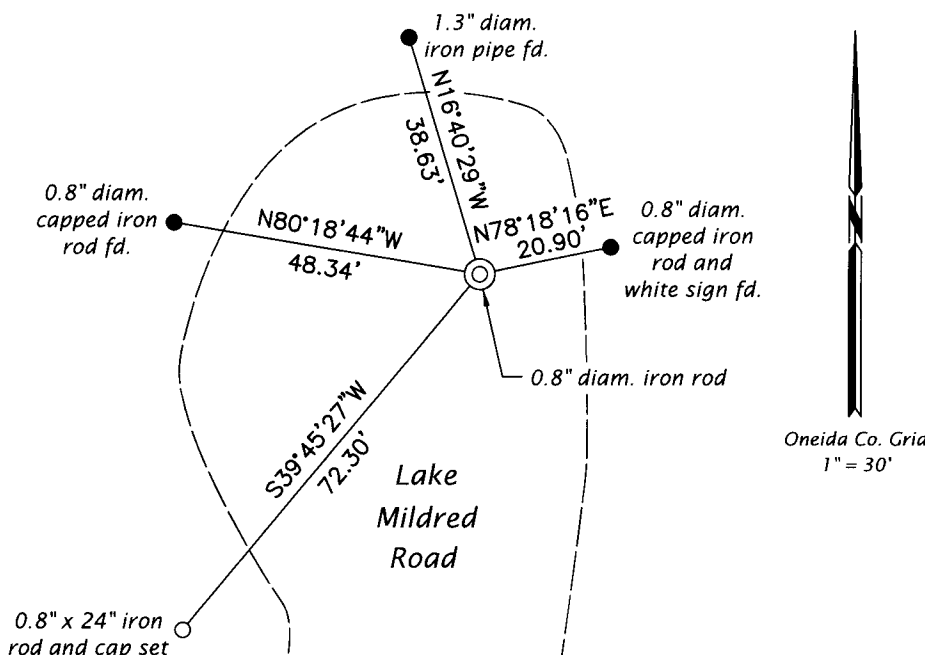
This is a perpetuation of the following monument record(s) that comprise a complete history of the corner:

*Sep., 1979: Certified Land Corner Restoration No. 3708190000 by James D. Rein, PLS
 Mar. 13, 2007: USPLS Monument Record No. 3708190000 by Kevin P. Bixby, PLS*

Sep. 24, 2019: In May, I found and accepted the record monument, a PK nail in the pavement of Lake Mildred Road. As noted on Bixby's record, an erroneous PK nail bears N63°36'W, 13.87 feet. In the new seal coat surface, I set a 0.8" diam., 24" long iron rod 2" beneath the surface to replace the PK nail. I found or established accessories as shown below.

The coordinate value shown has been verified by at least one of the following methods: 1) comparison to a previously GPS determined published value; 2) the value is the average of two or more GPS observations at a markedly different time; 3) one or more distances were measured back to the GPS observed corner from temporary GPS observed offset locations.

(c)(d)(e) Plan view of corner with ties to at least 4 witness monuments. If in disagreement with previously established corner, show the distances between the two corners and also indicate the ties to the disputed.



Oneida Co. Grid
 1" = 30'

REGISTER OF DEEDS OFFICE
 ONEIDA COUNTY
 FILED

DEC 23 2019

KYLE J. FRANSON
 REGISTER OF DEEDS

(i) I, Jeffrey W. Austin, Professional Land Surveyor No. S-1885, hereby certify that the corner location on this record was determined by me or under my direction and control and that this U.S. Public Land Survey Monument Record is correct and complete to the best of my knowledge and belief.

[Handwritten Signature]
 Signature

3 DEC 2019
 Date

3708190000 (INDEX NO. R-5)