

This form is intended to fulfill the requirements of Chapter A-E 7.08 (3)(a) thru (i) U.S. Public Land Survey Monument Location Record, Wisconsin Administrative Code. Use the reverse side of form for continuation.

U.S. PUBLIC LAND SURVEY MONUMENT LOCATION RECORD

USPLS CORNER: SOUTH WITNESS MC SECTION: 20 TOWNSHIP: 37 NORTH RANGE: 8 EAST

NAME OF WATERWAY FOR M.C. CORNER : MILDRED LAKE SECTION LINE: WEST

(CITY)(VILLAGE)(TOWN) OF: NEWBOLD COUNTY OF: ONEIDA

Description of monument found or placed and all other evidence used as the basis for monument location; including monuments and related measurements required if the corner location was reestablished by lost corner proportionate methods. Also indicate name of original surveyor, original survey date and the corner monument, bearing trees, witness or other reference monuments established; including measured bearing and distance ties, from available records.

Found and accepted an old 3/4" dia. heavy duty iron pipe with uncapped top 12" up and tipped slightly North at this corner location; I plumbed and secured the old iron pipe and drove a standard 2" dia. by 30" long aluminum pipe monument with stamped Oneida County cap over the old iron pipe to 6" above grade; the corner falls 8' South of existing lake shoreline bearing East/West.

In July 1863, William E. Daugherty/GLO set a wood post as the original corner and marked OBTs: a 6" Bw S43°W 28 links and a 7" Bw S56°E 17 links; all are now obliterated.

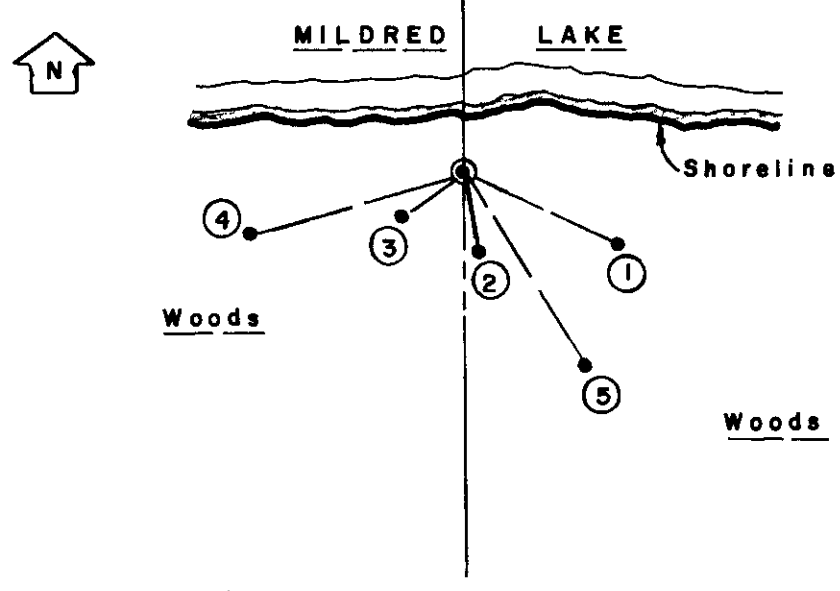
In June 1983, James F. Kasson/RLS 1416 found a 3/4" iron pipe at this corner as previously set by Hall, and noted a 14" Pr BT S71°W 34.10' per Plat of Survey filed as B-446 in Oneida County survey records; BT found OK and used for new ties.

In 1980 William E. Badow/RLS 1182 notes an iron pipe found at this corner per Oneida County Certified Survey Map No. 798 recorded June 26, 1980 in Oneida County records.

Corner is located in woods West of an improved lake frontage lot with buildings at Fire No. 7228A Mildred Lake Road off North end of dead end cul-du-sac roadway.

This recovery completed October 2, 2002 and indirectly witnessed by East adjoiner owner.

Plan view map of monument location with bearing and distance ties to a minimum of four(4) described witness or reference monuments of concrete, natural stone, iron, live bearing trees or equivalent material. If applicable, also show a minimum of two(2) bearing and distance ties to any other monument found and not accepted; including the bearing and distance from the accepted monument.

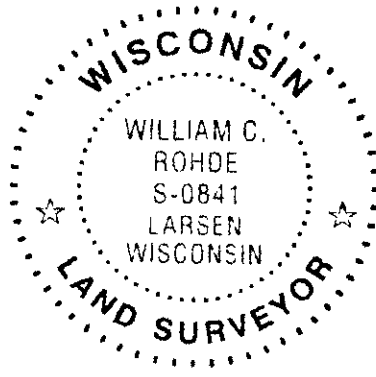


- WITNESS MONUMENT TIES:**
- ① New 10" Pw BT S65°E 26.06'.
 - ② New center 7" Mr of 3 BT S11°E 12.88'.
 - ③ New 5" Pw BT S55°W 11.55'.
 - ④ Old 16" Pr BT with lower face blaze scar plain S73°W 34.39'.
- I set a standard white poly 'T' marker post 6" North of the corner monument.
- ⑤ New 6.5" Pw BT S32°E 35.11'.

SCALE: 1" = 30'

Unless otherwise indicated, all bearing tree ties are to a .25" dia. by 2.5" long PK nail with a 1.25" dia. steel washer driven into unblazed right face and a .25" dia. by 2.5" long PK nail with a 2" dia. steel washer stamped BT is also driven into unblazed face of bearing tree at DBH; the basis for measured bearings is by compass to nearest degree and all tie distances are measured horizontal by steel tape corrected to nearest 1/100th feet at standard temperature of 68° F.

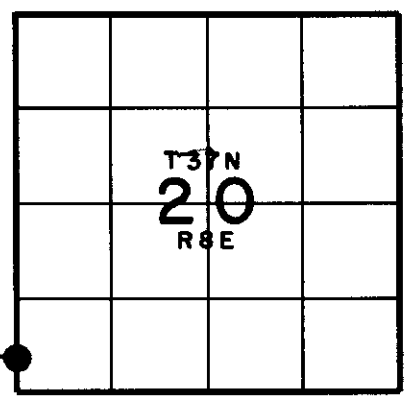
RLS SEAL:



LAND SURVEYOR CERTIFICATE:

I, William C. Rohde, hereby certify that I am duly licensed as a Professional Land Surveyor in the State of Wisconsin; that this USPLS monument location was determined by me and/or under my direct supervision and control; and that this U.S. Public Land Survey Monument Location Record is true and correct to the best of my knowledge and belief.

Signed *William C. Rohde*
 William C. Rohde RLS 841



U.S. PUBLIC LAND SURVEY MONUMENT RECORD

Note: This form is intended and designed to fulfill all requirements of Wisconsin Administrative Code, Chapter A-E 7.08 U.S. Public Land Survey Monument Record (3)(a-i).

(a) CORNER LOCATION
 Wit. Meander Cor. of Secs. 19 & 20
 Township 37 North
 Range 8 East of the 4th P.M.
 Town of Newbold
 County of Oneida

WISCRS - Oneida County
 N: 178,205.03 USft
 E: 232,460.16 USft
 Datum: NAD 83(2011)
 GNSS Method: RTN - Offset
 GNSS Control: WISCORS VRS

	SEC.	19	
	T37N	R8E	

● WCMC

(b) HISTORY OF ORIGINAL CORNER ESTABLISHMENT

Original Surveyor:

Original Accessories:

Date of Survey Commenced:
 Completed:

See previous USPLS Monument Record

(b)(f)(g)(h) Description of monument found at this corner and if it was accepted, state all evidence (material, testimonial, occupational, plats, records, other monuments) used as a basis for accepting. If not accepted or if nothing was found, state evidence used as basis for establishing location. If re-established through lost corner proportionate methods, indicate all monuments, distances and directions used to establish. Indicate type of monument and sign post found or set.

This is a perpetuation of a previous USPLS Monument Record by William C. Rohde, RLS dated March 1, 2003 and filed in the office of the Oneida County Register of Deeds. A complete history of the corner can be found on the previous monument record. I accept the previous location as a true and faithful perpetuation or reestablishment of the original corner location and further perpetuate it as follows.

October 5, 2018: I found and accepted the record monument, a 2-1/2" diam. aluminum pipe with a 3-1/4" diam. Oneida Co. aluminum cap projecting 2" above the ground surface. I found or established accessories as shown below. I found a white vinyl sign post bearing North, 0.6 ft.

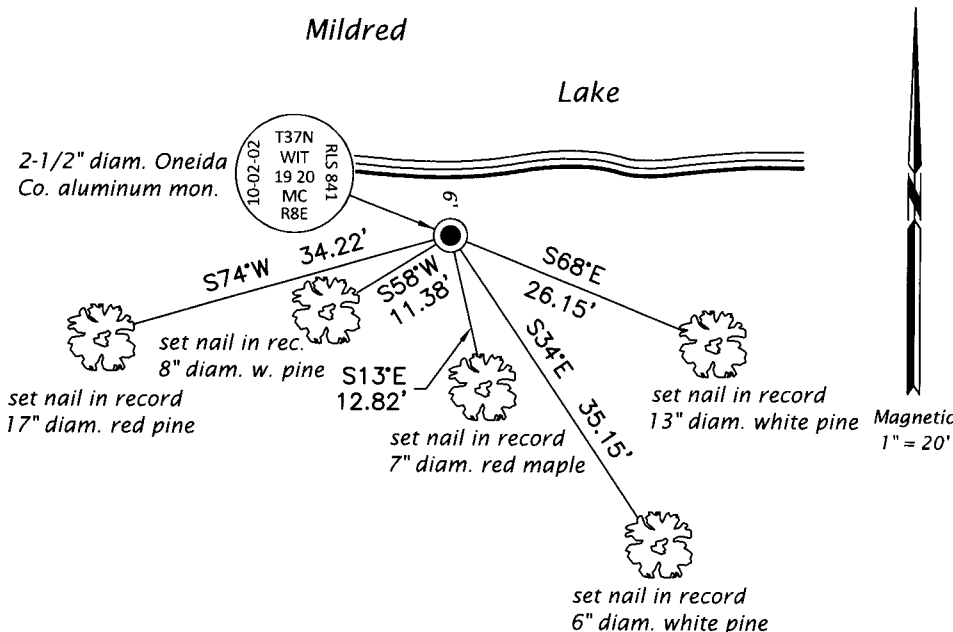
The coordinate value shown has been verified by at least one of the following methods: 1) comparison to a previously GPS determined published value; 2) the value is the average of two or more GPS observations at a markedly different time; 3) one or more distances were measured back to the GPS observed corner from temporary GPS observed offset locations.

REGISTER OF DEEDS OFFICE
 ONEIDA COUNTY
 FILED

DEC 17 2018

KYLE J. FRANSON
 REGISTER OF DEEDS

(c)(d)(e) Plan view of corner with ties to at least 4 witness monuments. If in disagreement with previously established corner, show the distances between the two corners and also indicate the ties to the disputed.



(i) I, Jeffrey W. Austin, Professional Land Surveyor No. S-1885, hereby certify that the corner location on this record was determined by me or under my direction and control and that this U.S. Public Land Survey Monument Record is correct and complete to the best of my knowledge and belief.

 Signature

3 DEC 2018

Date