

This form is intended to fulfill the requirements of Chapter A-E 7.08 (3)(a) thru (i) U.S. Public Land Survey Monument Location Record, Wisconsin Administrative Code. Use the reverse side of form for continuation.

U.S. PUBLIC LAND SURVEY MONUMENT LOCATION RECORD

USPLS CORNER: NORTH MC SECTION: 20 TOWNSHIP: 37 NORTH RANGE: 8 EAST

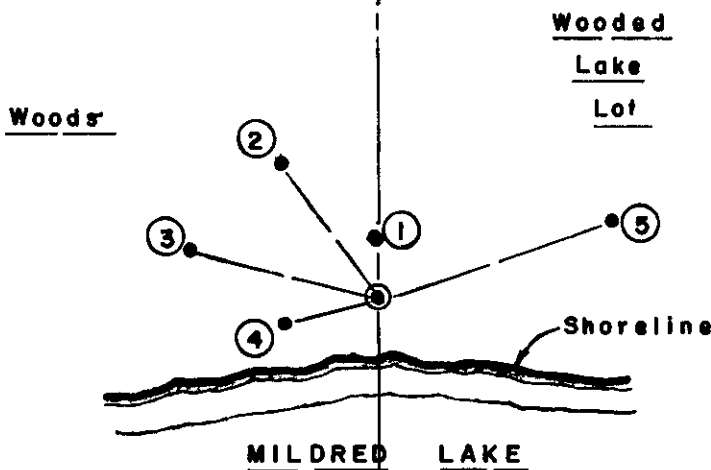
NAME OF WATERWAY FOR M.C. CORNER: MILDRED LAKE SECTION LINE: WEST

~~(CITY)(VILLAGE)(TOWN)~~ OF: NEWBOLD COUNTY OF: ONEIDA

Description of monument found or placed and all other evidence used as the basis for monument location; including monuments and related measurements required if the corner location was reestablished by lost corner proportionate methods. Also indicate name of original surveyor, original survey date and the corner monument, bearing trees, witness or other reference monuments established; including measured bearing and distance ties, from available records.

In July 1863, William E. Daugherty/GLO set a wood post as original corner and marked OBTs: a 12" Py N10°W 6 links and a 12" Py N70°E 19lks. Post and NW OBT are now gone, but NE OBT is now a low rotted stump with plain lower face blaze; however, it is obvious that OBT tie links should be reversed to fit found OBT now at N76°E 4.15' to face blaze. In 1905, D.H. Vaughan also noted that OBT tie links should be reversed, as he had found both OBTs on the North shore of Mildred Lake for setting a new wood corner post and noted new BTs: 12" Py N80°W 13 links, now a low rotted stump; a 12" Py N10°W 6 links, now gone; and a 12" Py N70°E 19 links, now gone; and noted the NW GLO OBT as a 4' high stump and the NE OBT as a 12" Py N70°E 6 links, found this date as noted above; per Pages 14 & 15 of Old Field Book 5 in Oneida County survey records. In May 1926, V.M. Maine found a stake at this corner and OBTs per Page 12 of Maine Diary Book 2 in Oneida County survey records. In February 1951, F.R. Wincentzen/RLS 155 notes an iron pipe at this corner and BTs: an old 16" Pr N40°W 27 links and a 12" Pr S70°W 15 links, both found OK and used for new ties, per Page 120 of Wincentzen Book 1 in Oneida County survey records. Iron pipe at corner was found this date and is at the SW corner of an improved lake frontage lot with wood frame residence and separate garage at Fire No. 4391. In June 1983, James F. Kasson/RLS 1416 notes a 1.25" iron pipe at this corner and BTs: GLO pine stump N60°E 4.10'; a 11" Pr by Hall S63°W 9.72' and a 15" Pr by Hall N68°W 17.17'; all found OK this date per Plat of Survey filed as B-446 in Oneida County survey records. I found and accepted the old 1.25" dia. uncapped & plumb iron pipe at this corner and drove a standard 2" dia. by 30" long aluminum pipe monument over it with stamped Oneida County cap to 23" above grade as an old rock cairn at grade around the old iron pipe monument prevented further driving. I set a standard white poly 'T' marker post 6" NW in soil cavity left by an old 1.25" dia. by 65" marker pipe found, which I pulled and left flat on grade nearby. This recovery completed October 2, 2002; there were no direct witnesses.

Plan view map of monument location with bearing and distance ties to a minimum of four(4) described witness or reference monuments of concrete, natural stone, iron, live bearing trees or equivalent material. If applicable, also show a minimum of two(2) bearing and distance ties to any other monument found and not accepted; including the bearing and distance from the accepted monument.



WITNESS MONUMENT TIES:

- ① New 8" Pr BT N03°W 6.65'.
- ② Old 16" Pr BT with upper & lower face blazes nearly shut N36°W 17.42'.
- ③ New 10" Pw BT N75°W 20.21'.
- ④ Old 11" Pr BT with upper face blaze shut & lower face blaze open with scribing S75°W 10.02'; tree is tipped 30°+ South.
- ⑤ New 9" Pw BT N71°E 25.69'.

Corner falls 6' North of lake shoreline, bearing East/West this date, at the original 1863 GLO survey meander corner location.

SCALE: 1" = 20'

Unless otherwise indicated, all bearing tree ties are to a .25" dia. by 2.5" long PK nail with a 1.25" dia. steel washer driven into unblazed right face and a .25" dia. by 2.5" long PK nail with a 2" dia. steel washer stamped BT is also driven into unblazed face of bearing tree at DBH; the basis for measured bearings is by compass to nearest degree and all tie distances are measured horizontal by steel tape corrected to nearest 1/100th feet at standard temperature of 68° F.

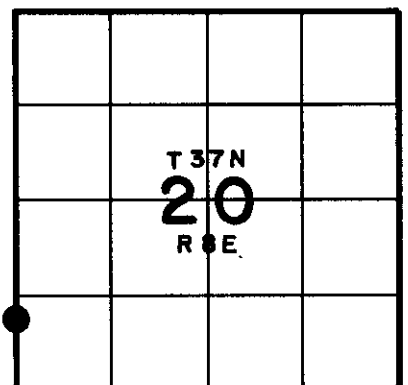
RLS SEAL:



LAND SURVEYOR CERTIFICATE:

I, William C. Rohde, hereby certify that I am duly licensed as a Professional Land Surveyor in the State of Wisconsin; that this USPLS monument location was determined by me and/or under my direct supervision and control; and that this U.S. Public Land Survey Monument Location Record is true and correct to the best of my knowledge and belief.

Signed *William C. Rohde*
William C. Rohde RLS 841



SECTION LOCATION MAP
INDEX NO. G-R-5

Date Signed: March 1, 2003

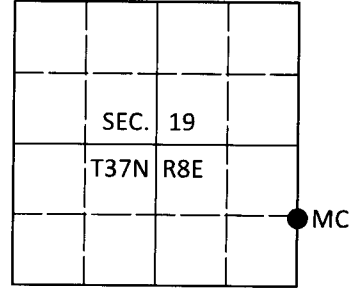
3708190900

U.S. PUBLIC LAND SURVEY MONUMENT RECORD

Note: This form is intended and designed to fulfill all requirements of Wisconsin Administrative Code, Chapter A-E 7.08 U.S. Public Land Survey Monument Record (3)(a-i).

(a) CORNER LOCATION
 Meander Cor. of Secs. 19 & 20
 Township 37 North
 Range 8 East of the 4th P.M.
 Town of Newbold
 County of Oneida

WISCRS - Oneida County
 N: 178,865.44 USft
 E: 232,467.72 USft
 Datum: NAD83(2011)
 GNSS Method: RTN - Direct
 GNSS Control: WISCORS VRS



(b) HISTORY OF ORIGINAL CORNER ESTABLISHMENT

Original Surveyor: _____ Original Accessories: _____
 Date of Survey Commenced: _____ see previous monument record
 Completed: _____

(b)(f)(g)(h) Description of monument found at this corner and if it was accepted, state all evidence (material, testimonial, occupational, plats, records, other monuments) used as a basis for accepting. If not accepted or if nothing was found, state evidence used as basis for establishing location. If re-established through lost corner proportionate methods, indicate all monuments, distances and directions used to establish. Indicate type of monument and sign post found or set.

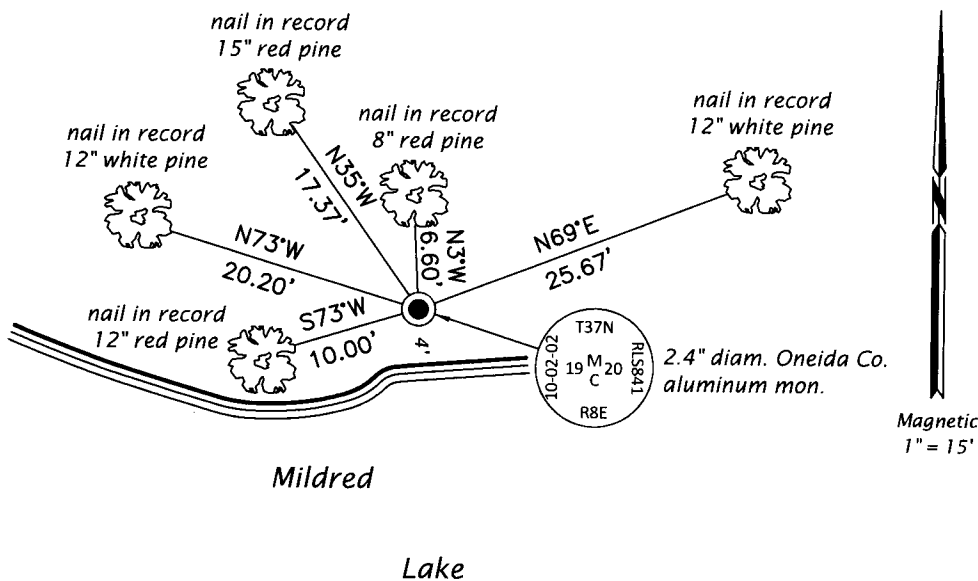
This is a perpetuation of the following monument record(s) that comprise a complete history of the corner:

Mar. 1, 2003: USPLS Monument Record No. 3708190900 by William C. Rohde, RLS

May 14, 2019: I found and accepted the record monument, a 2.4" diam. aluminum pipe with a 3.3" diam. Oneida Co. aluminum cap projecting 22" above the ground surface. I found or established accessories as shown below. I found a white vinyl sign post bearing Northwest, 0.4 ft.

The coordinate value shown has been verified by at least one of the following methods: 1) comparison to a previously GPS determined published value; 2) the value is the average of two or more GPS observations at a markedly different time; 3) one or more distances were measured back to the GPS observed corner from temporary GPS observed offset locations.

(c)(d)(e) Plan view of corner with ties to at least 4 witness monuments. If in disagreement with previously established corner, show the distances between the two corners and also indicate the ties to the disputed.



REGISTER OF DEEDS OFFICE
 ONEIDA COUNTY
 FILED

JUN 18 2019

KYLE J. FRANSON
 REGISTER OF DEEDS

(i) I, Jeffrey W. Austin, Professional Land Surveyor No. S-1885, hereby certify that the corner location on this record was determined by me or under my direction and control and that this U.S. Public Land Survey Monument Record is correct and complete to the best of my knowledge and belief.

[Handwritten Signature]
 Signature

1 JUN 18 2019
 Date