

CERTIFIED LAND CORNER RESTORATION

State of Wisconsin }
County of Oneida } ss.

I, James D. Rein, do hereby certify that on the 27th day of March, 1979, I found evidence of the east one-quarter corner of Section 19 Township 37 North, Range 8 East, Fourth Principal Meridian, as described hereon; and that from this evidence I established ~~new monuments and~~ accessories as described hereon to perpetuate the original location of this corner:

Description of original monument and accessories and subsequent restorations:

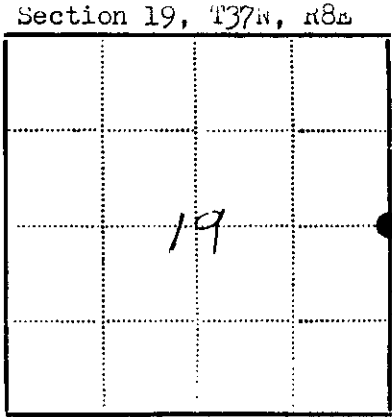
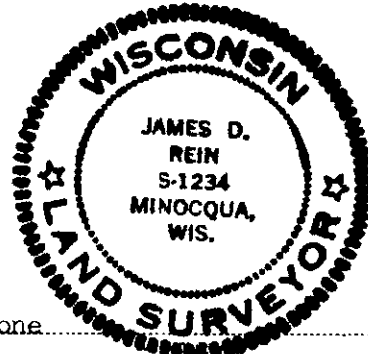
wood post set by William E. Dougherty, Deputy Surveyor on July 29th, 1863, witnessed by an 8" birch N88°W, 28 links (18.48 feet) and by an 18" Yellow Pine N86°E, 13 links (8.58 feet)
wood post found by F. K. Wincentzen witnessed by the following old bearing trees: 22" Norway Pine S89°E, 24 links (15.84 feet) and by a 28" white Pine S65°W, 80 links (52.80 feet)

Description of corner evidence found:

2" diameter iron pipe flush and surrounded by pile of rocks, remains of 3" x 3" scribed post down, new maple post by others. witnessed by a 20" Norway Pine S89°E, 15.43 feet (scar visible) and by a 26" white Pine S65°W, 52.82 feet (scribed with 9 inches of overgrowth).

Description of ~~monument and~~ accessories I established to perpetuate the location of this corner:

Made ties to witness the existing iron pipe as follows:
Set P.K. nail in existing bearing tree 20" Norway Pine S89°E, 15.43 feet;
Set P.K. nail in existing bearing tree 26" white Pine S65°W, 52.82 feet;
made bearing tree with P.K. nail set in lower face 18" Norway Pine bearing S7°E, 52.64 feet.



Legend: Circle - Corner monument restored; Square -

Resident witnesses none

Dated at Minocqua Wisconsin, this 10th day of September, 1979.

Signature James D. Rein Title Land Surveyor (County Surveyor, Registered Land Surveyor, or other duly authorized official)

Surveyors Registration No. S-1234

Office of REGISTER OF DEEDS County of Oneida

I hereby certify that the within instrument was filed in this office for record on the 17th day of September, 1982, and was filed in Book No. Page No. of County Records.

Signature Doris Verge Kuehn Title REGISTER OF DEEDS

Township, Range, Section, Index No., Page No.

3708192000

P-5

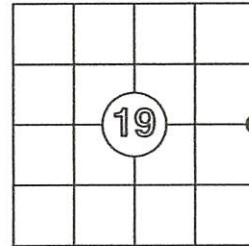
SEP 01 2023

KYLE J. FRANSON
REGISTER OF DEEDS

US PUBLIC LAND SURVEY MONUMENT RECORD

Per Wis. Admin. Code § A-E 7.08, a U.S. public land survey monument record shall be prepared and filed with the county survey records as part of any land survey within 60 days of setting or accepting the corner, which includes or requires the perpetuation, restoration, or use of a U.S. public land survey corner and when any of the situations in Wis. Admin. Code § A-E 7.08(1)(a), 7.08(1)(b) or 7.08(1)(c) arise.

3(a) Corner location:
Found 2" iron pipe
East 1/4 Corner
Section 19
Township 37 North
Range 08 East
4th Principal Meridian
Town of Newbold
Oneida Co., WI



CORNER ID:
3708192000

(b) History of Original Corner Establishment

Corner Set: Wood Post
Original Surveyor: Wm. Daugherty
Date of Survey: July, 1863
Original Bearing Trees:
Birch, 8" N 88° W, 28 links
Yellow pine, 18" N 86° E, 13 links

(b)(f)(g)(h) Description of monument found at this corner and, if it was accepted, state all evidence (material, testimonial, occupational, plats, record, other monuments) used as a basis for establishing location. If re-establishing through lost corner proportionate methods, indicate all monuments, distances and directions used to establish this location. Indicate type of monument and sign post found or set.

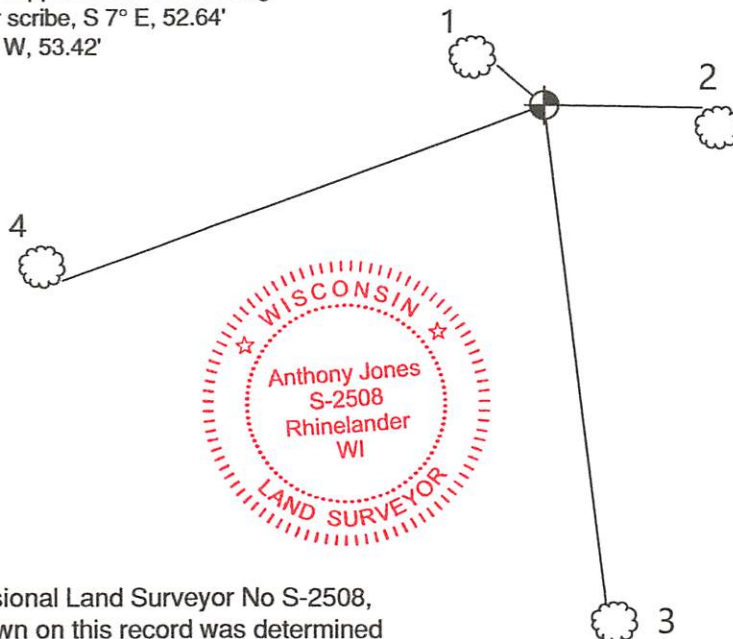
This is a continuation of a previous USPLSS Monument Record by Surveyor Jim Rein, S-1234 (3/27/79). See previous record for additional history on this corner.

- March 27, 1979 - Jim Rein accepts and witnesses a found 2" iron pipe, flush with the ground in a mound of stones.
- Since 1979, multiple surveyors have accepted and used this 2" iron pipe. See the Oneida County online map repository for a list of maps using this corner.
- August 20, 2023 - Anthony Jones found and accepted a 2" iron pipe, flush with the ground, in a mound of stones, as described by Rein in 1979.

(4). I found all three of the witness trees as described by Rein. I was unable to locate the PK nails set by Rein (likely overgrown), so I set new 6" spike in the side of the trees, as shown below.

(c)(d)(e) Plan view of corner with ties to at least 4 witness monuments. If in disagreement with previously established corner, show the distances between the two corners and also indicate the ties to the disputed.

1. Set 6" spike in a 9" maple (new), N 50° W, 6.38'
2. Set 6" spike in a 27" Norway pine (found), S 89° E, 16.50'
3. Found PK nail in a 30" White pine (found). Upper and lower scribing still visible. PK nail is driven into the lower scribe, S 7° E, 52.64'
4. Set 6" spike in a 30" Norway pine, S 70° W, 53.42'



Bearings: Magnetic with
handheld compass
Scale: 1"=20'



(i) I, Anthony R. Jones, Wisconsin Professional Land Surveyor No S-2508, hereby certify that the corner location shown on this record was determined by me, or under my direction or control, and that this U.S. Public Land Survey Monument Record is correct and complete to the best of my knowledge and belief.

Anthony R. Jones, PLS No. S-2508 Date 8/20/23

Index No. P-5