

This form is intended to fulfill the requirements of Chapter A-E 7.08 (3)(a) thru (i) U.S. Public Land Survey Monument Location Record, Wisconsin Administrative Code. Use the reverse side of form for continuation.

U.S. PUBLIC LAND SURVEY MONUMENT LOCATION RECORD

USPLS CORNER: WEST WITNESS MC SECTION: 29 TOWNSHIP: 37 NORTH RANGE: 8 EAST
 NAME OF WATERWAY FOR M.C. CORNER : MILDRED LAKE SECTION LINE: NORTH
 (CITY)(VILLAGE)(TOWN) OF: NEWBOLD COUNTY OF: ONEIDA

Description of monument found or placed and all other evidence used as the basis for monument location; including monuments and related measurements required if the corner location was reestablished by lost corner proportionate methods. Also indicate name of original surveyor, original survey date and the corner monument, bearing trees, witness or other reference monuments established; including measured bearing and distance ties, from available records.

Found and accepted an old 3/4" dia. iron pipe with split/peened out top & older flagging tape wrap 12" up; I pulled the slightly bent 35" long iron pipe and drove a standard 2" dia. by 30" long aluminum pipe monument with stamped Oneida County cap 6" up into plumb soil cavity left below grade by the old iron pipe and secured for new ties. The corner falls 5'+- West of existing lake shoreline bearing S45°E. I left the old iron pipe flat on grade nearby.

In July 1863, William E. Daugherty/GLO set a wood post as the original corner and marked OBTs: a 7" Bw N85°W 16 links and a 7" Bw S21°W 17 links; all are now obliterated.

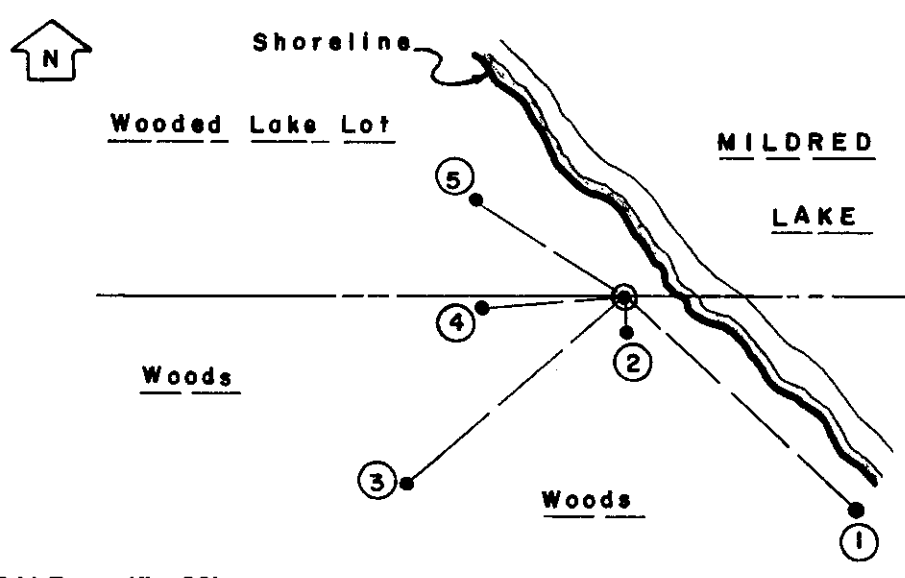
In 1980, William E. Bandow/RLS 1182 notes an iron pipe at this corner as M.C. per Oneida County Certified Survey Map No. 798 recorded June 26, 1980 in Oneida County records; and in 1985, he notes an iron pipe found at this corner per Plat of Survey filed as A-109 in Oneida County survey records.

In 1987, William E. Bandow/RLS 1182 notes an iron pipe found at this corner per Oneida County Certified Survey Map No. 1285 recorded in Oneida County records.

Corner is at the NE corner of Lot 2 of Oneida County Certified Survey Map No. 1285 at Fire No. 7222 Mildred Lake Road off East side of dead end cul-du-sac roadway.

This recovery completed October 2, 2002; there were no direct witnesses, although North adjoiner/owner made aware.

Plan view map of monument location with bearing and distance ties to a minimum of four(4) described witness or reference monuments of concrete, natural stone, iron, live bearing trees or equivalent material. If applicable, also show a minimum of two(2) bearing and distance ties to any other monument found and not accepted; including the bearing and distance from the accepted monument.



WITNESS MONUMENT TIES:

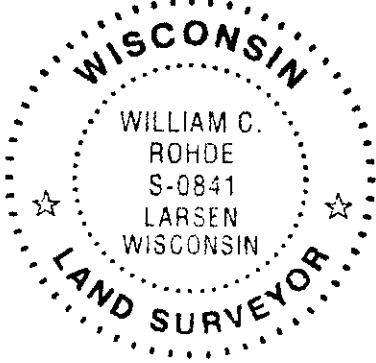
- ① New 9" Pw BT S42°E 33.04'.
- ② New 6" Bw BT S10°E 3.49'.
- ③ New 13" Oak BT S49°W 29.63'.
- ④ New 18" Pr BT ingrown to root crown of 28" Pw S86°W 14.43' to PK nail with washer in left face.
- ⑤ New North 12" Oak of double BT N46°W 17.99'.

I set a standard white poly 'T' marker post 9" East of corner monument.

SCALE: 1" = 20'

Unless otherwise indicated, all bearing tree ties are to a .25" dia. by 2.5" long PK nail with a 1.25" dia. steel washer driven into unblazed right face and a .25" dia. by 2.5" long PK nail with a 2" dia. steel washer stamped BT is also driven into unblazed face of bearing tree at DBH; the basis for measured bearings is by compass to nearest degree and all tie distances are measured horizontal by steel tape corrected to nearest 1/100th feet at standard temperature of 68° F.

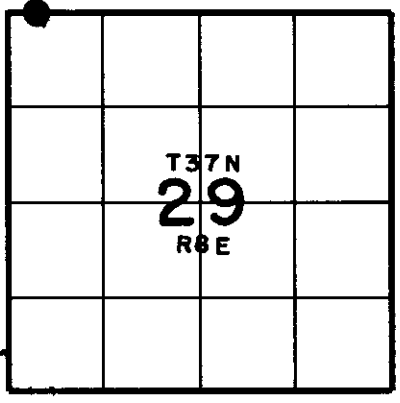
RLS SEAL:



LAND SURVEYOR CERTIFICATE:

I, William C. Rohde, hereby certify that I am duly licensed as a Professional Land Surveyor in the State of Wisconsin; that this USPLS monument location was determined by me and/or under my direct supervision and control; and that this U.S. Public Land Survey Monument Location Record is true and correct to the best of my knowledge and belief.

Signed: *William C. Rohde*
 William C. Rohde RLS 841



Date Signed: March 1, 2003

SECTION LOCATION MAP
 INDEX NO. R 5-6

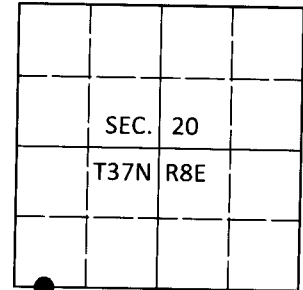
3708200036

U.S. PUBLIC LAND SURVEY MONUMENT RECORD

Note: This form is intended and designed to fulfill all requirements of Wisconsin Administrative Code, Chapter A-E 7.08 U.S. Public Land Survey Monument Record (3)(a-i).

(a) CORNER LOCATION
 Wit. Meander Cor. of Secs. 20 & 29
 Township 37 North
 Range 8 East of the 4th P.M.
 Town of Newbold
 County of Oneida

WISCRS - Oneida County
 N: 177,795.72 USft
 E: 232,834.68 USft
 Datum: NAD 83(2011)
 GNSS Method: RTN - Offset
 GNSS Control: WISCRS VRS



(b) HISTORY OF ORIGINAL CORNER ESTABLISHMENT

Original Surveyor: _____ Original Accessories: _____
 Date of Survey Commenced: _____ See previous USPLS Monument Record
 Completed: _____

(b)(f)(g)(h) Description of monument found at this corner and if it was accepted, state all evidence (material, testimonial, occupational, plats, records, other monuments) used as a basis for accepting. If not accepted or if nothing was found, state evidence used as basis for establishing location. If re-established through lost corner proportionate methods, indicate all monuments, distances and directions used to establish. Indicate type of monument and sign post found or set.

This is a perpetuation of a previous USPLS Monument Record by William C. Rohde, RLS dated March 1, 2003 and filed in the office of the Oneida County Register of Deeds. A complete history of the corner can be found on the previous monument record. I accept the previous location as a true and faithful perpetuation or reestablishment of the original corner location and further perpetuate it as follows.

October 5, 2018: I found and accepted the record monument, a 2-1/2" diam. aluminum pipe with a 3-1/4" diam. Oneida Co. aluminum cap projecting 3" above the ground surface. The record birch bearing tree is in decline. I found or established accessories as shown below. I found a white vinyl sign post bearing East, 0.7 ft.

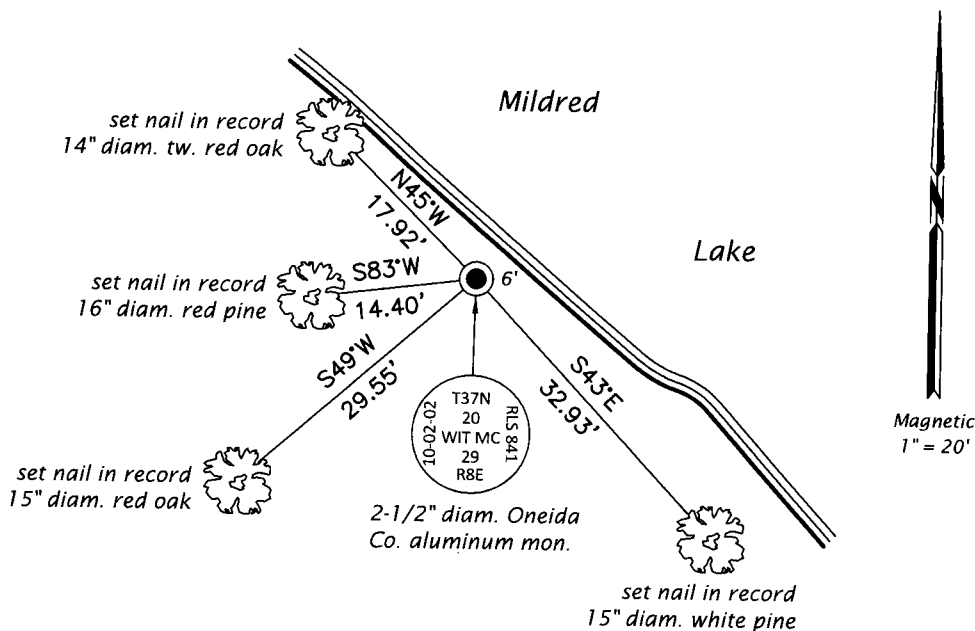
The coordinate value shown has been verified by at least one of the following methods: 1) comparison to a previously GPS determined published value; 2) the value is the average of two or more GPS observations at a markedly different time; 3) one or more distances were measured back to the GPS observed corner from temporary GPS observed offset locations.

REGISTER OF DEEDS OFFICE
 ONEIDA COUNTY
 FILED

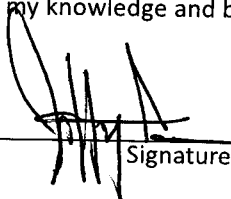
DEC 17 2018

KYLE J. FRANSON
 REGISTER OF DEEDS

(c)(d)(e) Plan view of corner with ties to at least 4 witness monuments. If in disagreement with previously established corner, show the distances between the two corners and also indicate the ties to the disputed.



(i) I, Jeffrey W. Austin, Professional Land Surveyor No. S-1885, hereby certify that the corner location on this record was determined by me or under my direction and control and that this U.S. Public Land Survey Monument Record is correct and complete to the best of my knowledge and belief.


 Signature

3 DEC 2018
 Date