

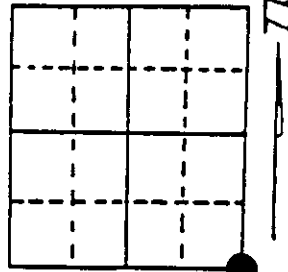
U.S. PUBLIC LAND SURVEY MONUMENT RECORD

Note: This form is intended and designed to fulfill all requirements of Wisconsin Administrative Code, Chapter A-E 7.08 U.S. Public Land Survey Monument Record (3) (a) (b) (c) (d) (e) (f) (g) (h) (i). An additional sheet may be added if necessary to conform with said requirements.

(a) Corner location: Township 37 North
 Range 8 East/West

Town/City/Village Newbold

County Oneida



Section 22

(b) (f) (g) (h) Description of monument found at this corner and if it was accepted, state all evidence (material, testimonial, occupational, plats, records, other monuments) used as a basis for accepting. If not accepted or if nothing was found, state evidence used as basis for establishing location. If reestablished through lost corner proportionate methods, indicate all monuments, distances and directions used to establish. Indicate type of monument found or set and sign post.

1863 - Wm. E. Daugherty established this corner and set a wood post with two BTs:
 8" Black Pine, N48°E, 31 Links 10" Black Pine, S46°W, 46 Links

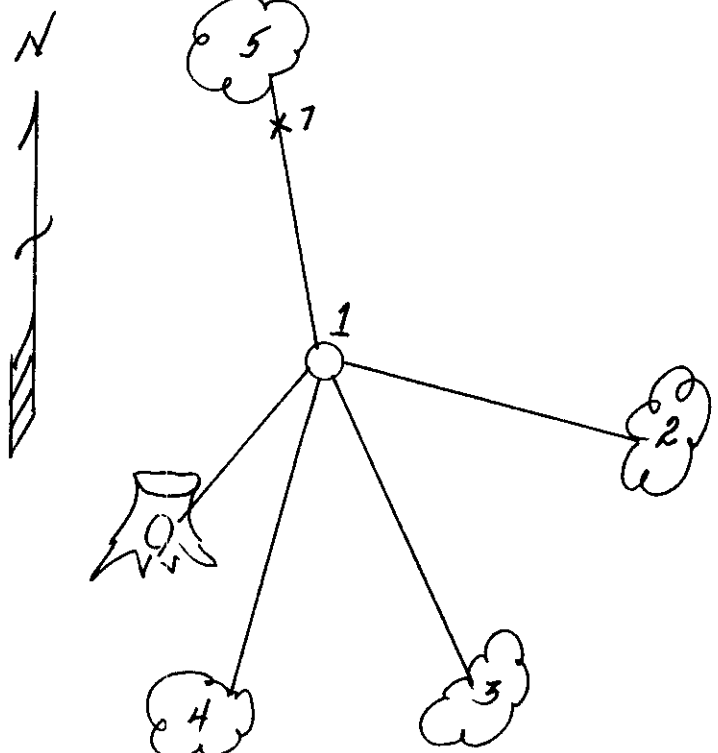
1902 thru 1986: See reverse side.

4/1992 - Milo E. Stefan in working S½ SE¼ located 1" iron pipe bent over. Questioned southwest BT by Schmits to possibly have been one of Vaughan's BTs. I destroyed it for annual ring count and found it to be twenty years too young. I, therefore, replaced the iron pipe with an aluminum monument, verified the three old BTs, made one new BT and set plastic sign post.

(c) (d) (e) Plan view of corner with ties to at least 4 witness monuments. If in disagreement with previously established corner, show the distances between the two corners and also indicate the ties to the disputed corner.

- 1) 2" x 30" aluminum monument.
- 2) 12" Red Pine, S83°E, 77.18'.
- 3) 14" Red Pine, S31°E, 121.99'.
- 4) 6" Red Pine, S20°W, 138.92'.
- 5) 16" Red Pine, N25°W, 84.54'.
- 6) 15" Jack Pine Stump, S28°W, 62.76'.
- 7) Plastic sign post, N25°W, 82.00'.

Distances to nail in side of BTs.
 Stump blaze scribed "BT".



(i) I, Milo E. Stefan
 (type or print name) certify that the corner location on this record was determined by me or under my direction and control and that this U.S. Public Land Survey Monument Record is correct and complete to the best of my knowledge and belief.

Milo E. Stefan
 Signature

August 4, 1992
 Date

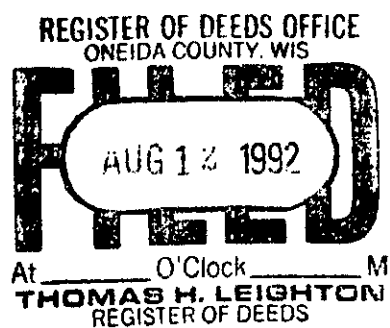


Stamp

3705 220000

Index No. R-17

- 1902 - D.H. Vaughan ran from SE corner Section 22 West 42.21 chains to South Quarter Section 22. New BT for Southeast corner: 7" B. Pine, S15½°W, 78½ links and 18" Yellow Pine, S67½°E, 108 links (no marks). Ran from S Quarter of 23, West 42.14 chains to Southwest corner of 23. Ran from West Quarter of 26 North 41.48 chains to Northwest corner of 26.
- 1908 - D.H. Vaughan states Northwest corner of 26 okay. Black Pine broken down. Ran South 41.90 chains to the West Quarter of 26. He also states he ran from corner to 22-23-26-27 South on Section Line for road.
- 1953 - F.R. Wincentzen indicates corner 22, 23, 26, 27 distance East to Quarter = 2781.24 feet.
- 1975 - L. Schmit indicates iron rod at corner. BT 12" Jack Pine, S23°W, 61.40 feet.
- 1976 - Sy Poskie recovered corner.
- 1986 - Michael J. Romportl found a 1" iron pipe agreeing with Schmits BT and witnessed it.



DEC 20 2022

US PUBLIC LAND SURVEY MONUMENT RECORD

KYLE J. FRANSON
REGISTER OF DEEDS

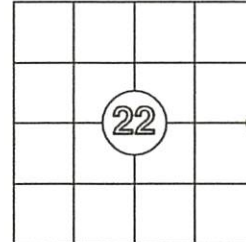
Per Wis. Admin. Code § A-E 7.08, a U.S. public land survey monument record shall be prepared and filed with the county survey records as part of any land survey within 60 days of setting or accepting the corner, which includes or requires the perpetuation, restoration, or use of a U.S. public land survey corner and when any of the situations in Wis. Admin. Code § A-E 7.08(1)(a), 7.08(1)(b) or 7.08(1)(c) arise.

3(a) Corner location:

Set 3 1/4" spike
Southeast Corner
Section 22
Township 37 North
Range 8 East
4th Principal Meridian
Town of Newbold
Oneida Co., WI

WISCRS:
N:
E:
Datum:
GNSS Control:
GNSS Method:
Verification Method:

The coordinate value, if shown, has been verified by at least one of the following methods: 1) comparison to a previously GNSS determined published value; 2) The value is the average of two or more GNSS observations at markedly different times; 3) one or more distances were measured to the corner from temporary GNSS observed offset locations.



CORNER ID:
3708220000

(b) History of Original Corner Establishment

Corner Set: Wood Post
Original Surveyor: Wm. Daugherty
Date of Survey: 1863

Original Bearing Trees:
8" Black Pine- N 48° W, 31 links
10" Black Pine - S 64° W, 46 links

(b)(f)(g)(h) Description of monument found at this corner and, if it was accepted, state all evidence (material, testimonial, occupational, plats, record, other monuments) used as a basis for establishing location. If re-establishing through lost corner proportionate methods, indicate all monuments, distances and directions used to establish this location. Indicate type of monument and sign post found or set.

This is a continuation of previous USPLSS Monument Records by Surveyors Mike Romportl (1981) and Milo Stefan (1992). See previous records for additional history on this corner.

7/15/1995: Kip Soder finds a PK nail in place.

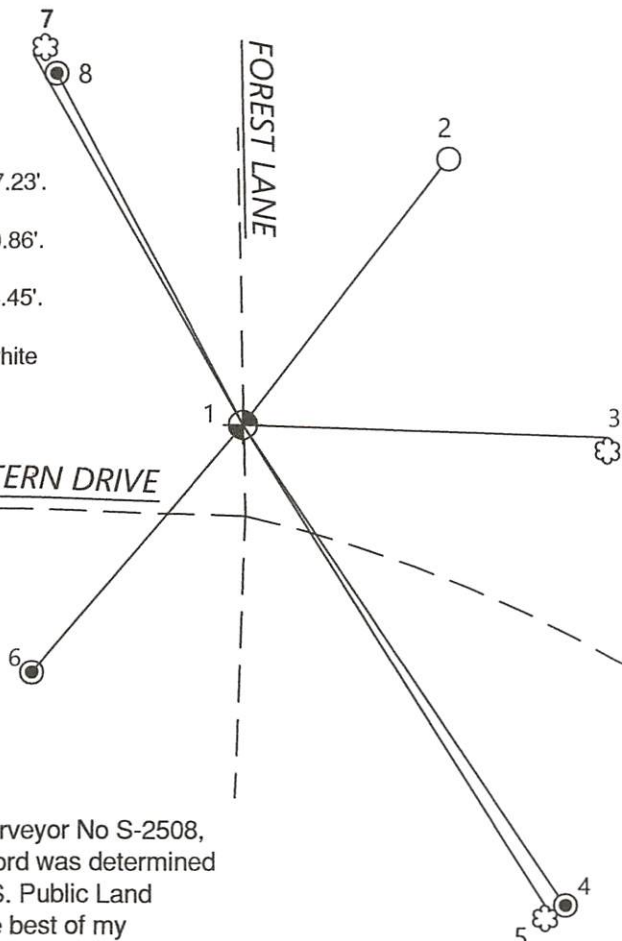
3/11/1997 and 6/17/1999: Jim Rein finds a capped aluminum monument in place.

2005: Todd Loftus notes a subdivisional monument of record.

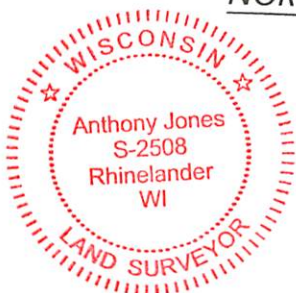
12/5/2022: I found no evidence of the corner on the surface of the road. It appears that the town has re-paved this stretch road. Due to the frozen condition, I was unable to chip away to find this corner. Using the published coordinate from the Oneida County GIS database, and existing ties, I set a 3 1/4" survey spike at the record location for this corner. From Stefan's record, I did not find the 15" jack pine stump (6) or the 6" red pine (4). I added 3 new 1 1/4" iron pipes and 1 found iron pipe, as shown below

(c)(d)(e) Plan view of corner with ties to at least 4 witness monuments. If in disagreement with previously established corner, show the distances between the two corners and also indicate the ties to the disputed.

1. Set 3 1/4" survey spike
2. Found 1 1/4" iron pipe, N 32°57'18" E, 69.92'.
3. Found nail in north side of 15" red pine, S 88°00'25" W, 77.23'.
4. Set 1 1/4" x 18" iron pipe, S 33°49'02" E, 120.92'.
5. Found nail in east side of 18" red pine, S 33°03'18" E, 120.86'.
6. Set 1 1/4" x 18" iron pipe, S 40°32'25" E, 68.01'.
7. Found nail in west side of 20" red pine, N 29°34'18" W, 84.45'.
Blaze is still open at the base of this tree.
8. Set 1 1/4" x 18" iron pipe, N 28°02'07" W, 82.49' next to white witness post.



Oneida Co. Grid
Scale: 1"=40'



(i) I, Anthony R. Jones, Wisconsin Professional Land Surveyor No S-2508, hereby certify that the corner location shown on this record was determined by me, or under my direction or control, and that this U.S. Public Land Survey Monument Record is correct and complete to the best of my knowledge and belief.

Anthony R. Jones, PLS No. S-2508

12/5/22
Date

Index No. P-17