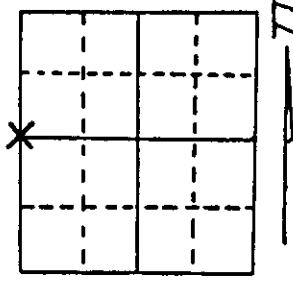


U.S. PUBLIC LAND SURVEY MONUMENT RECORD

Note: This form is intended and designed to fulfill all requirements of Wisconsin Administrative Code, Chapter A-E 7.08 U.S. Public Land Survey Monument Record (3) (a) (b) (c) (d) (e) (f) (g) (h) (i). An additional sheet may be added if necessary to conform with said requirements.

(a) Corner location: Township 37 North
 Range 8 East/West

Town/City/Village Newbold
 County Oneida



Section 23

(b) (f) (g) (h) Description of monument found at this corner and if it was accepted, state all evidence (material, testimonial, occupational, plats, records, other monuments) used as a basis for accepting. If not accepted or if nothing was found, state evidence used as basis for establishing location. If reestablished through lost corner proportionate methods, indicate all monuments, distances and directions used to establish.

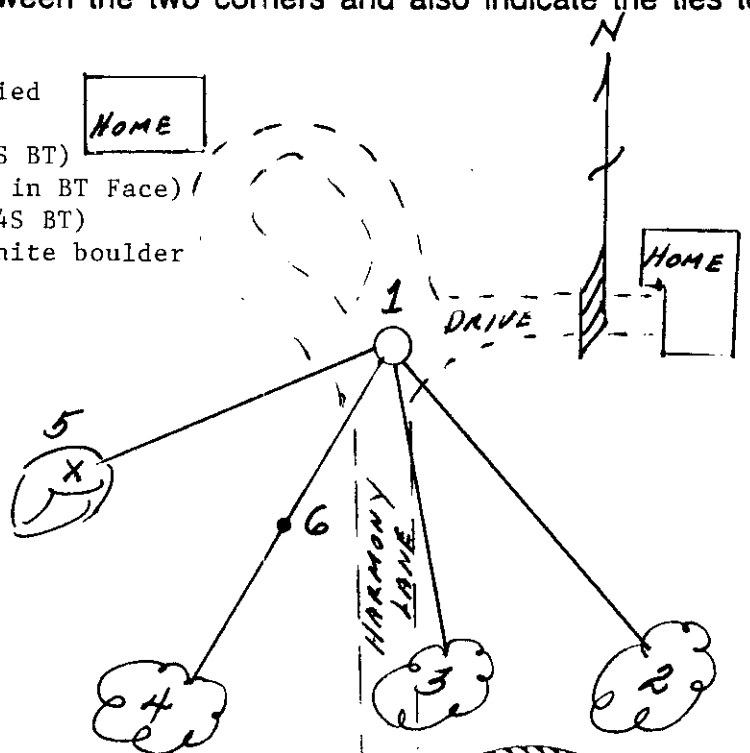
July 1863, Wm. E. Daugherty set post for 1/4 corner to sections 22 and 23:
 10" White Pine, N84°E, 89 Links (58.74')
 20" White Pine, N22°W, 163 Links (107.58')
 11/11/1934, Hall found post hole and set 2" x 48" iron pipe and Tamarack post scribed 1/4S, S23, S22 and made new BT's:
 5" Jack Pine, S75°W, 56 1/2 Links (37.29')
 8" Jack Pine, S20°E, 77 Links (50.82')
 3/18/1964, F.R. Wincentzen found - post under rock and both of Hall's BTs.
 5/13/1988, Milo E. Stefan found Hall's SE BT, a stump cut off very low, BT scribing plain - pulled off this BT and excavated road and found top of Hall's Tamarack post scribed and in good condition placed in 16" of stove pipe. Hall's SW BT falls in lawn. Both original BTs fall in lawn and driveway.
 I accept this post position and set Oneida County Monument.

(c) (d) (e) Plan view of corner with ties to at least 4 witness monuments. If in disagreement with previously established corner, show the distances between the two corners and also indicate the ties to the disputed corner.

1. Oneida County Aluminum monument buried 12" below road surface.
2. 14" Red Oak, S31°E, 80.82 Feet (1/4S BT)
3. 16" Jack Pine, S9°E, 67.25 Feet (PK in BT Face)
4. 8" Red Pine, S29°W, 94.79 Feet (1/4S BT)
5. "X" on peak of 5' x 3 1/2' x 1' granite boulder
6. Plastic sign post S29°W, 44.5 Feet

(BTs scribed accordingly)
 Distances to nail in side of trees.

SEE USPLSMR
 by Dennis Roberts
 dated 12-27-00 for
 revised location
 AND TIES
 MGR 2/14/01



(i) I, Milo E. Stefan
 (type or print name) certify that the corner location on this record was determined by me or under my direction and control and that this U.S. Public Land Survey Monument Record is correct and complete to the best of my knowledge and belief.

Milo E. Stefan Signature
 May 13, 1988 Date



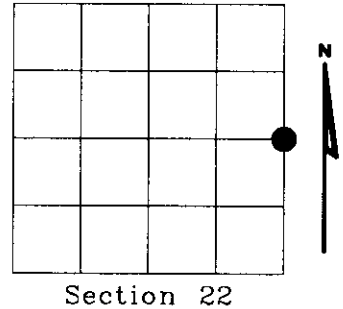
Index No. P-17

3705222000

U.S. PUBLIC LAND SURVEY MONUMENT RECORD

NOTE: This form is intended and designed to fulfill all requirements of Wisconsin Administrative Code, Chapter A-E 7.08 U.S. Public Land Survey Monument Record (3)(a)(b)(c)(d)(e)(f)(g)(h)(i). An additional sheet may be added if necessary to conform with said requirements.

(a) Corner location: Township 37 North
 Range 08 East
 Town of NEWBOLD
 ONEIDA County, Wisconsin



Section 22

(b)(f)(g)(h) Description of monument found at this corner and if it was accepted, state all evidence (material, testimonial, occupational, plats, records, other monuments) used as a basis for accepting. If not accepted or if nothing was found, state evidence used as basis for establishing location. If reestablished through lost corner proportionate methods, indicate all monuments, distances and directions used to establish. Indicate type of monument found or set and sign post.

JULY 1863, WM. DAUGHERTY SET POST FOR 1/4 CORNER TO SECTIONS 22 & 23: 10" WHITE PINE, N84°E, 89 LINKS (58.74')
 20" WHITE PINE, N22°W, 163 LINKS (107.58')

11-11-1934, HALL FOUND POST HOLE AND SET 2" X 48" IRON PIPE AND TAMARACK POST SCRIBED 1/4S, S 23, S 22, AND MADE NEW B.T.'S:
 5" JACK PINE, S75°W, 56 1/2 LINKS (37.29')
 8" JACK PINE, S20°E, 77 LINKS (50.82')

1948, F.R. WINCENTSEN - HAD 14" J. PINE, S23 1/2°E, 51.1 FEET

1951, CY POSKIE, USED 2" IRON PIPE, MAP # B1922

3-18-1964, F.R. WINCENTSEN FOUND - POST UNDER ROCK AND BOTH OF HALL'S B.T.'S

1975, GERALD B. INMAN, FOUND 2" IRON PIPE, AS SHOWN ON PLAT OF WILDWOOD SHORES, VOL. 11 PG. 40

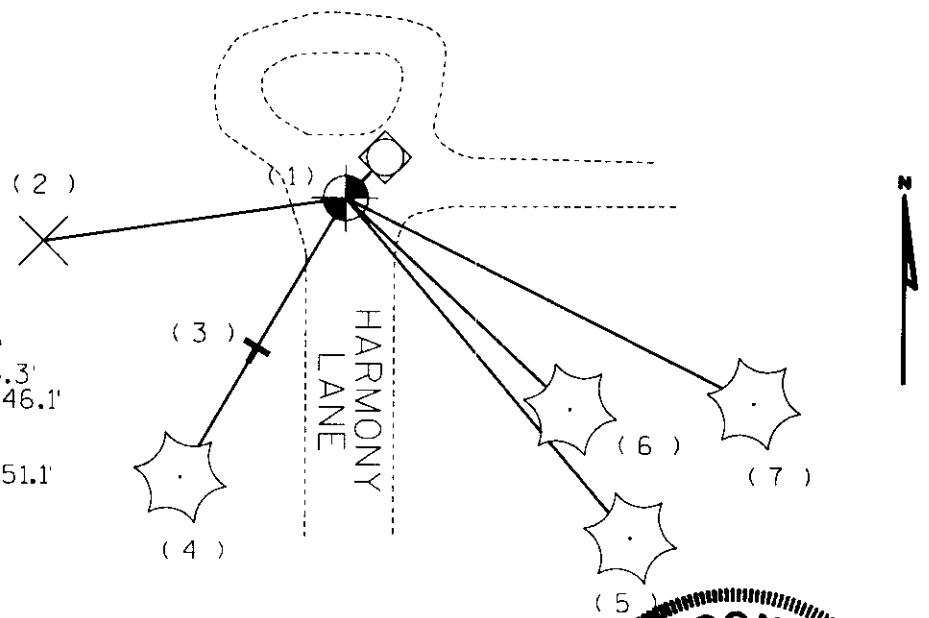
5-13-88, MILD E. STEFAN FOUND HALL'S SE B.T., A STUMP CUT OFF VERY LOW, B.T. SCRIBING PLAIN - PULLED OFF THIS B.T. AND EXCAVATED ROAD AND FOUND TOP OF HALL'S TAMARACK POST SCRIBED AND IN GOOD CONDITION PLACED IN 16" OFSTOVE PIPE. HALL'S SW B.T. FALLS IN LAWN, BOTH ORIGINAL B.T.'S FALL IN LAWN AND DRIVEWAY. ACCEPTED THIS POST POSITION AND SET ONEIDA COUNTY MONUMENT 12" BELOW ROAD SURFACE.

NEW B.T.'S:
 14" RED OAK, S31°E, 80.82 FEET (1/4S BT)
 16" JACK PINE, S09°E, 67.25 FEET (P.K. IN B.T. FACE)
 8" RED PINE, S29°W, 94.79 FEET (1/4S B.T.)
 "X" ON PEAK OF 5' X 3 1/2' X 1' GRANITE BOULDER (NO BEARING OR DIST.)
 PLASTIC SIGN POST S29°W, 44.5 FEET

2000, DENNIS B. ROBERTS, FOUND 2" IRON PIPE 10" BELOW GRAVEL SURFACE, AND ONEIDA COUNTY MONUMENT SW OF 2" IRON PIPE +/- 1.5'. ACCEPT 2" IRON PIPE AS POSITION OF ONE-QUARTER CORNER, AND WITNESS AS SHOWN.

(c)(d)(e) Plan view of corner with ties to at least 4 witness monuments. If in disagreement with previously established corner, show the distances between the two corners and also indicate the ties to the disputed corner.

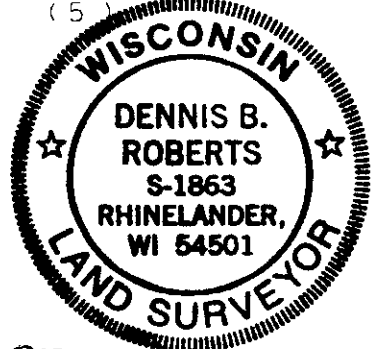
DISTANCES TO NAIL
 IN SIDE OF B.T.



- (1) ONEIDA COUNTY MONUMENT
 S44°09'27"W, 1.53'
- (2) "X" ON PEAK OF 5' X 3 1/2' X 1'
 GRANITE BOULDER, S 81°W, 65.3'
- (3) PLASTIC SIGN POST, S 30°W, 46.1'
- (4) 12" RED PINE S30°W, 96.33'
- (5) 16" JACK PINE, S08°E, 67.91'
- (6) 12" JACK PINE STUMP, S23°E, 51.1'
- (7) 16" RED OAK, S32°E, 80.83'

(i) I, Dennis Roberts, Registered Land Surveyor *S-1863, hereby certify that the corner location on this record was determined by me or under my direction and control and that this U.S. Public Land Survey Monument Record is correct and complete to the best of my knowledge and belief.

Dennis B. Roberts 12-27-00
 Signature Date



3708222000

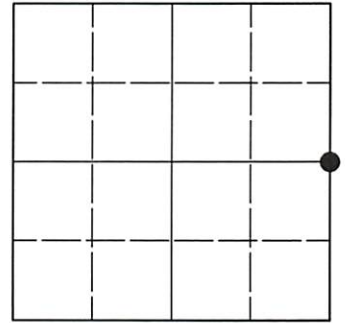
Index No. P 17

U.S. PUBLIC LAND SURVEY MONUMENT RECORD

Note: This form is intended and designed to fulfill all requirements of Wisconsin Administrative Code, Chapter A-E 7.08 U.S. Public Land Survey Monument Record (3)(a-i).

(a) CORNER LOCATION
 1/4 Cor. of Secs. 22 & 23
 Township 37 North
 Range 8 East of the 4th P.M.
 Town of Newbold
 County of Oneida

WISCRS - Oneida County
 N: 180,649.54 USft
 E: 248,958.27 USft
 Datum: NAD 83(2011) ep. 2010.00
 GNSS Method: RTN - Direct
 GNSS Control: WISCORS VRS



Sec. 22, T. 37 N., R. 8 E.

(b)(f)(g)(h) Description of monument found at this corner and if it was accepted, state all evidence (material, testimonial, occupational, plats, records, other monuments) used as a basis for accepting. If not accepted or if nothing was found, state evidence used as basis for establishing location. If re-established through lost corner proportionate methods, indicate all monuments, distances and directions used to establish. Indicate type of monument and sign post found or set.

This record is a perpetuation of the following land corner document(s):

December 27, 2000: USPLS Monument Record by Dennis B. Roberts, filed in Oneida County

A complete history of the corner can be found on the previous land corner document(s). I accept the record activity as a true and faithful perpetuation or reestablishment of the original corner location and further perpetuate it as described below.

June 22, 2023: I found and accepted the record monument, a 2.3" o.d. iron pipe 12" beneath the paved road surface. Record bearing tree #7 is a stump. I can tell Stefan's aluminum monument is 1.5 feet SW of the corner, but I chose not to damage the pavement to dig for it. In lieu of a second reference monument, I used a chiseled "X" on the boulder shown below. I found or established accessories as indicated below. I found a white vinyl sign post bearing S30°W, 46.2 ft.

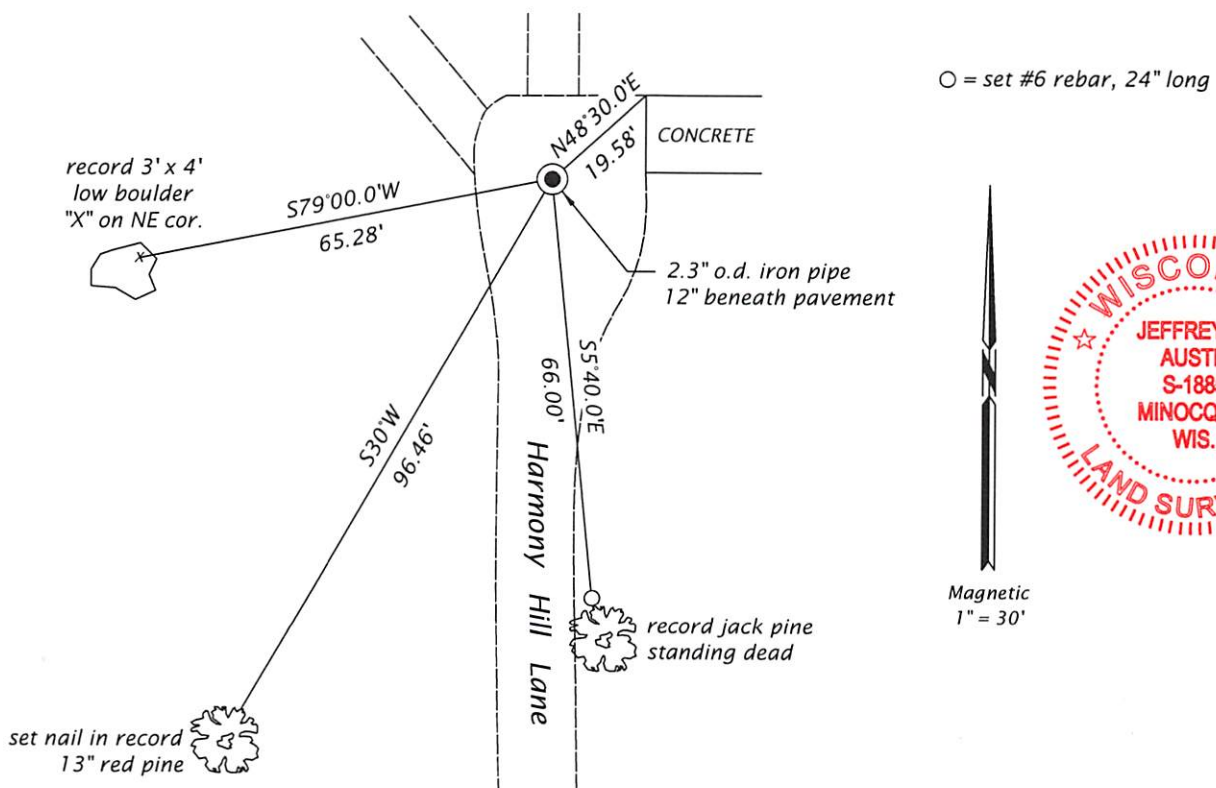
The coordinate value shown is the weighted mean of two or more GNSS observations at markedly different times satisfying the accuracy requirements defined and qualified in the 2022 Oneida County Fee Schedule for USPLS Corners.

REGISTER OF DEEDS OFFICE
 ONEIDA COUNTY
 FILED


JUL 06 2023

KYLE J. FRANSON
 REGISTER OF DEEDS

(c)(d)(e) Plan view of corner with ties to at least 4 witness monuments. If in disagreement with previously established corner, show the distances between the two corners and also indicate the ties to the disputed.



(i) I, Jeffrey W. Austin, Professional Land Surveyor No. S-1885, hereby certify that the corner location on this record was determined by me or under my direction and control and that this U.S. Public Land Survey Monument Record is correct and complete to the best of my knowledge and belief.

 Signature
 JULY 1, 2023 Date