

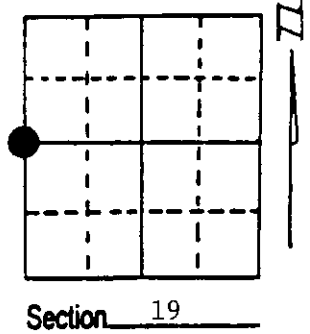
U.S. PUBLIC LAND SURVEY MONUMENT RECORD

Note: This form is intended and designed to fulfill all requirements of Wisconsin Administrative Code, Chapter A-E 7.08 U.S. Public Land Survey Monument Record (3) (a) (b) (c) (d) (e) (f) (g) (h) (i). An additional sheet may be added if necessary to conform with said requirements.

(a) Corner location: Township 37 North
 Range #9 East/West

Town/City/Village PINE LAKE

County ONEIDA



(b) (f) (g) (h) Description of monument found at this corner and if it was accepted, state all evidence (material, testimonial, occupational, plats, records, other monuments) used as a basis for accepting. If not accepted or if nothing was found, state evidence used as basis for establishing location. If reestablished through lost corner proportionate methods, indicate all monuments, distances and directions used to establish. Indicate type of monument found or set and sign post.

1860 - H.C. Fellows set wood post at 40.00 chains and made two BTs:
 12" White Pine, S40°E, 10 Links 12" Aspen, N61°W, 9 Links

6/28/1915 - Vaughan restored corner at road intersection. Called distance North to 'Section Corner' at 40.73 chains. Set 1 1/2" well point for corner.
 6/24/1993 - Milo E. Stefan found well point and another 1 1/4" iron pipe East 2.66'. We tied both off so as not to loose them when road was to be resurfaced this summer.

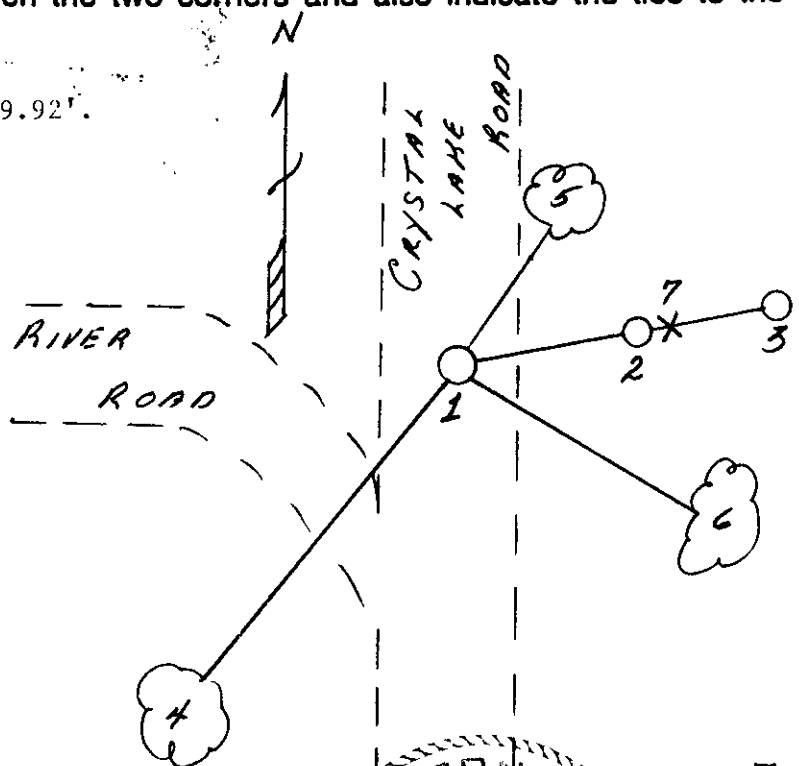
4/19/1994 - We returned and set railroad spike for corner position, set reference monuments, BTs and plastic sign post. Measured distance North to restored Section Corner - is 2670.38 feet.

(c) (d) (e) Plan view of corner with ties to at least 4 witness monuments. If in disagreement with previously established corner, show the distances between the two corners and also indicate the ties to the disputed corner.

- 1) Railroad spike.
- 2) 2" x 36" aluminum monument, N85°E, 29.92'.
- 3) Reference, N85°E, 57.85'.
- 4) 6" Red Pine, S42°W, 140.87'.
- 5) 12" Scotch Pine, N66°E, 25.14'.
- 6) 18" Red Pine, S64°E, 63.38'.
- 7) Plastic sign post

Distances to nail in side of BTs.
 Stump blazes scribed "BT".

Handwritten notes:
 well point.
 note on
 nearby files.
 L1851



(i) I, Milo E. Stefan
 (type or print name) certify that the corner location on this record was determined by me or under my direction and control and that this U.S. Public Land Survey Monument Record is correct and complete to the best of my knowledge and belief.

Milo E. Stefan 5/9/94
 Signature Date



Index No. P-1

Stamp 3708242000

US PUBLIC LAND SURVEY SYSTEM MONUMENT RECORD

This form is intended and designed to fulfill all requirements of Wisconsin Administrative Code, Chapter A-E 7.08 U.S. Public Land Survey Monument Record (3) (a)(b)(c)(d)(e)(f)(g)(h)(i). An additional sheet may be added if necessary to conform with said requirements.

REGISTER OF DEEDS OFFICE
ONEIDA COUNTY
FILED

JUL 13 2020

KYLE J. FRANSON
REGISTER OF DEEDS

The coordinate value, if shown, has been verified by at least one of the following methods: 1) comparison to a previously GNSS determined published value; 2) The value is the average of two or more GNSS observations at markedly different times; 3) one or more distances were measured to the corner from temporary GNSS observed offset locations.

(a) Corner location:

Found well point
East 1/4 Corner
Section 24
Township 37 North
Range 8 East

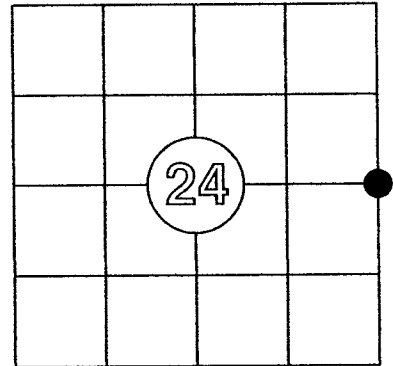
WISCRS: N/A
N: N/A
E: N/A
Datum: N/A
GNSS Method: N/A
GNSS Control: N/A

(b) History of Original Corner

Corner Set: Wood Post
Original Surveyor: H.C. Fellows
Date of Survey: 1860

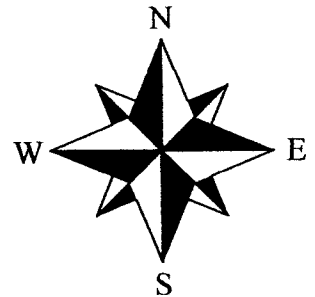
Original Bearing Trees:
12" Pw - S 40° E, 10 links
12" Aspen - N 61° W, 9 links

CORNER ID: 3708242000



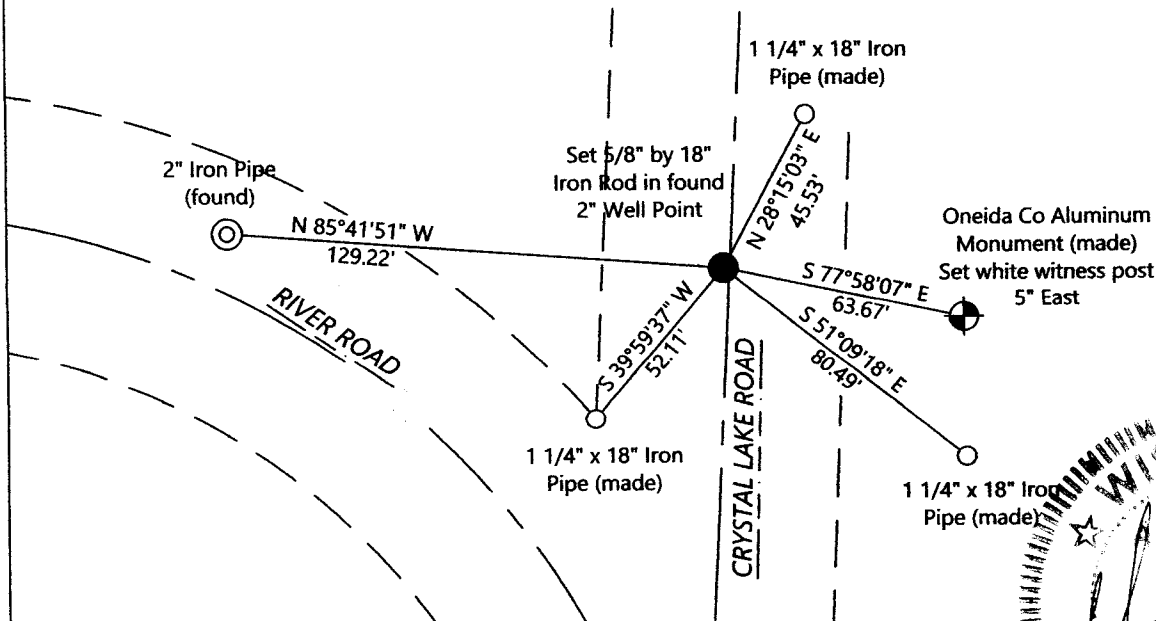
(c)(d)(e)(f)(g)(h) Description of monument found at this corner and, if it was accepted, state all evidence (material, testimonial, occupational, plats, record, other monuments) used as a basis for establishing location. If re-establishing through lost corner proportionate methods, indicate all monuments, distances and directions used to establish this location. Indicate type of monument and sign post found or set.

This is a continuation of a previous USPLSS Monument Record by Surveyor Milo E. Stefan, S-1558, dated May 9th, 1994. See previous record for additional history on this corner



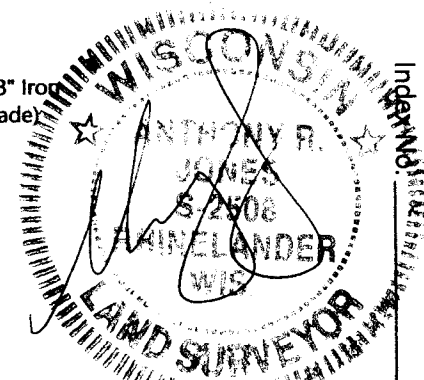
Oneida Co. Grid
Scale: 1"=50'

1993 - Milo Stefan, at corner, finds a 2" well point.
1994 - Stefan sets railroad spike in road surface and sets references.
1994 to 2020 - local surveyors accept railroad spike as corner monument
6/30/2020 - I found a hole in the surface of Crystal Lake Road, but no sign of any railroad spike, by Stefan.
Using Stefan's monument record, I searched and found no existing reference monuments. Due to extensive utility work, the trees and aluminum monuments have been destroyed. I did not search for the 6" red pine, S64°E, 140.87' due to heavy traffic. I excavated the location in Crystal Lake Road and found a 2" well point 10" below the surface. I drove a 5/8" by 18" iron rod into the center of the well point to serve as a marker at the surface and filled the hole in with blacktop patch.
I set 4 new reference monuments and accepted an existing pipe, as shown below:



(i) I, Anthony R. Jones, Wisconsin Professional Land Surveyor No S-2508, hereby certify that the corner location shown on this record was determined by me, or under my direction or control, and that this U.S. Public Land Survey Monument Record is correct and complete to the best of my knowledge and belief.

Anthony R. Jones 9/21/2020
Anthony R. Jones, PLS No. S-2508 Date



A.R. JONES LAND SURVEYING
2788 SCHWARZ RD.
RHINELANDER, WI 54501
715.894.7231 arjsurvey@charter.net