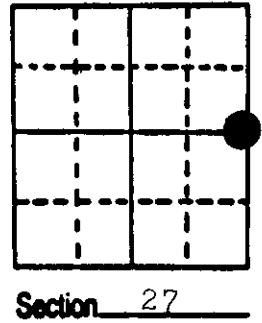


U.S. PUBLIC LAND SURVEY MONUMENT RECORD

Note: This form is intended and designed to fulfill all requirements of Wisconsin Administrative Code, Chapter A-E 5.02, U.S. Public Land Survey Monument Record (3) (a) (b) (c) (d) (e) (f) (g) (h) (i). An additional sheet may be added if necessary to conform with said requirements.

(a) Corner location: Township 37 North
 Range 8 East/West

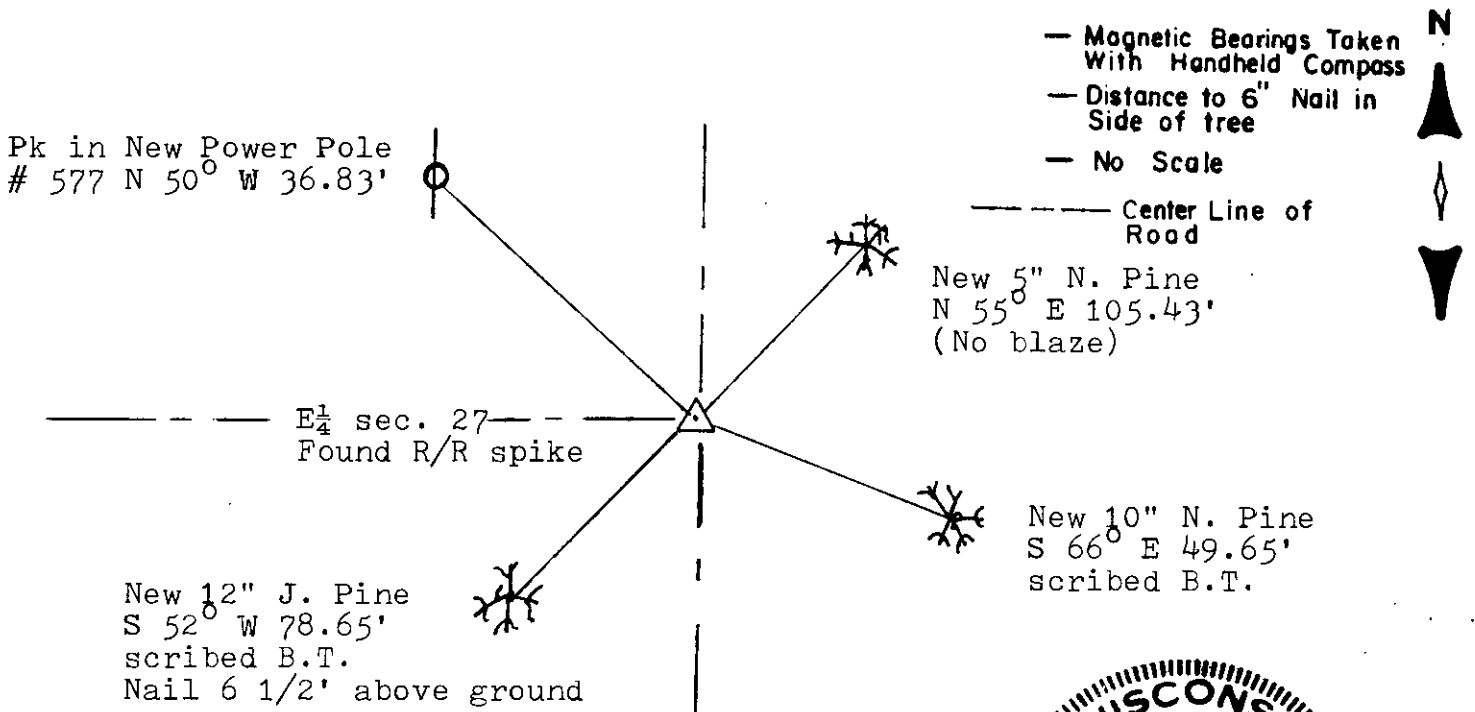
Town/City/Village Newbold
 County Oneida



(b) (f) (g) (h) Description of monument found at this corner and if it was accepted, state all evidence (material, testimonial, occupational, plats, records, other monuments) used as a basis for accepting. If not accepted or if nothing was found, state evidence used as basis for establishing location. If reestablished through lost corner proportionate methods, indicate all monuments, distances and directions used to establish.

- 1863 W.E. Daugherty established original corner. . . . 4.00 leave marsh, 40.00 set $\frac{1}{4}$ Sec. Post Blk. Pine 8 S 27 E 11; Blk. Pine 10 N 44 W 18.
- 1902 D.H. Vaughan found W $\frac{1}{4}$ 26 original trees nearly gone New B.T. Y Pine stp. 18 S 46 E 85, ran North 41.48 to N.W. cor. 26.
- 1908 D.H. Vaughan ran from N.W. cor. 26 South 41.90 to W $\frac{1}{4}$ 26, found tree he marked in 1902 ran South 41.35 to S.W. cor. 26 corrected line North for road.
- 1931 H.C. Hall states 2 Rod Road to be staked on E-W $\frac{1}{4}$ line Westerly from E $\frac{1}{4}$, located original E $\frac{1}{4}$ S. 27 tipped over stump of Blk. Pine, did not find Vaughans Y. Pine stp. Drove car axle with gear attached for $\frac{1}{4}$ corner falls in west Rut. Witnesses Y. Pine Stump 18 A 27 $\frac{1}{4}$ E .90^o ch; Blk. Pine 5" S 15 W 1.74; fence corner N 49 W .36; fence corner N 63 E .50^o.
- 1976 Sy Poskie recovered corner, power pole N 48 W 33.3'.
- 1987 I recovered a R/R spike 4' west of center line of road and on extension of the center line Richardson Road. This position checks with Halls Description so I witnessed it as shown below.

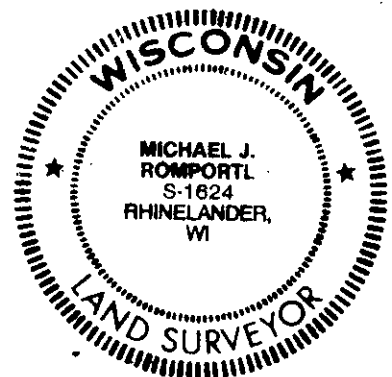
(c) (d) (e) Plan view of corner with ties to at least 4 witness monuments. If in disagreement with previously established corner, show the distances between the two corners and also indicate the ties to the disputed corner.



(i) I, Michael J. Romportl
 (type or print name) certify that the corner location on this record was determined by me or under my direction and control and that this U.S. Public Land Survey Monument Record is correct and complete to the best of my knowledge and belief.

Michael J. Romportl 12/30/87
 Signature Date

GENISOT & ASSOCIATES INC.
 1512 EAGLE ST., RHINELANDER, WIS.



Index No. 117

3708272000

US PUBLIC LAND SURVEY MONUMENT RECORD

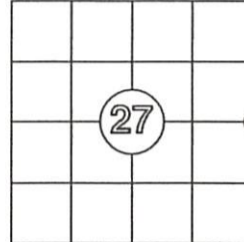
Per Wis. Admin. Code § A-E 7.08, a U.S. public land survey monument record shall be prepared and filed with the county survey records as part of any land survey within 60 days of setting or accepting the corner, which includes or requires the perpetuation, restoration, or use of a U.S. public land survey corner and when any of the situations in Wis. Admin. Code § A-E 7.08(1)(a), 7.08(1)(b) or 7.08(1)(c) arise.

3(a) Corner location:

Set 3 1/4" spike
 East 1/4 Corner
 Section 27
 Township 37 North
 Range 8 East
 4th Principal Meridian
 Town of Newbold
 Oneida Co., WI

WISCRS:
 N:
 E:
 Datum:
 GNSS Control:
 GNSS Method:
 Verification Method:

The coordinate value, if shown, has been verified by at least one of the following methods: 1) comparison to a previously GNSS determined published value; 2) The value is the average of two or more GNSS observations at markedly different times; 3) one or more distances were measured to the corner from temporary GNSS observed offset locations.



CORNER ID:
3708272000

(b) History of Original Corner Establishment

Corner Set: Wood Post
 Original Surveyor: Wm. Daugherty
 Date of Survey: 1863

Original Bearing Trees:
 8" Black Pine- S 27° E, 11 links
 10" Black Pine - N 44° W, 18 links

(b)(f)(g)(h) Description of monument found at this corner and, if it was accepted, state all evidence (material, testimonial, occupational, plats, record, other monuments) used as a basis for establishing location. If re-establishing through lost corner proportionate methods, indicate all monuments, distances and directions used to establish this location. Indicate type of monument and sign post found or set.

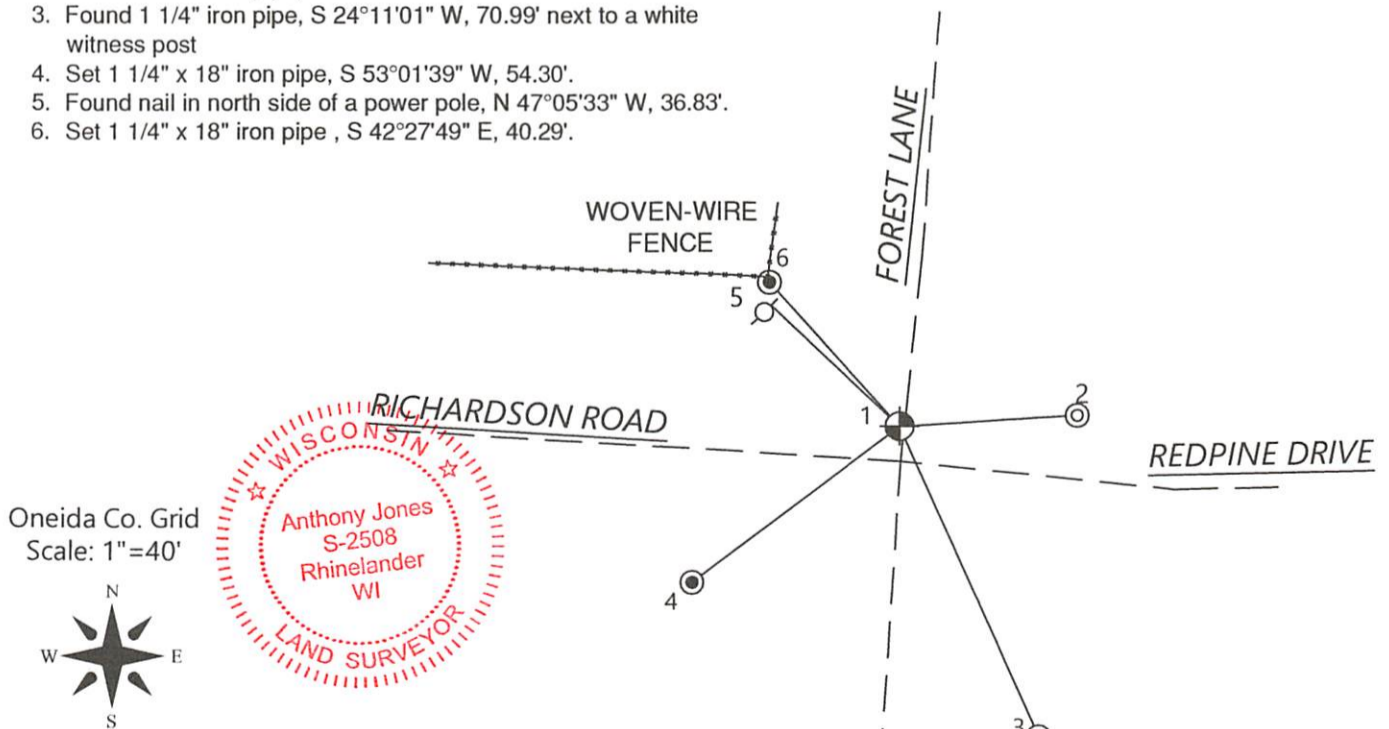
This is a continuation of a previous USPLSS Monument Record by Surveyors Mike Romportl (1987). See previous record for additional history on this corner.

1987-1999: Multiple surveyors find a railroad spike in place and accept it at the monument of record.

12/5/2022: I found no evidence of the corner on the surface of the road. It appears that the town has re-paved this stretch road. Using the published coordinates from the Oneida County GIS database, the remaining witness nail, and comparable measurements to the CW 1/6 corner and other monumentation as shown on a survey by Kip Sodor (B3269), I set a 3 1/4" survey spike at the record location for this corner. From Romportl's record, I did not find the 5" N. Pine to the northeast, the 10 N. Pine to the south east or the 12" J. Pine to the southwest.

(c)(d)(e) Plan view of corner with ties to at least 4 witness monuments. If in disagreement with previously established corner, show the distances between the two corners and also indicate the ties to the disputed.

1. Set 3 1/4" survey spike
2. Found 2 1/2" iron pipe, N 86°22'54" E, 37.07'.
3. Found 1 1/4" iron pipe, S 24°11'01" W, 70.99' next to a white witness post
4. Set 1 1/4" x 18" iron pipe, S 53°01'39" W, 54.30'.
5. Found nail in north side of a power pole, N 47°05'33" W, 36.83'.
6. Set 1 1/4" x 18" iron pipe, S 42°27'49" E, 40.29'.



(i) I, Anthony R. Jones, Wisconsin Professional Land Surveyor No S-2508, hereby certify that the corner location shown on this record was determined by me, or under my direction or control, and that this U.S. Public Land Survey Monument Record is correct and complete to the best of my knowledge and belief.

REGISTER OF DEEDS OFFICE
 ONEIDA COUNTY
 FILED

DEC 20 2022

KYLE J. FRANSON
 REGISTER OF DEEDS

[Signature]
 Anthony R. Jones, PLS No. S-2508 12/5/22 Date

Index No. T-17