

U.S. PUBLIC LAND SURVEY MONUMENT LOCATION RECORD

Recorders Data

CORNER: NW Section SECTION: 34 TOWNSHIP 37 NORTH RANGE 8 EAST WEST

FOR M.C. CORNER INDICATE: NAME OF WATERWAY N/A SECTION LINE N/A

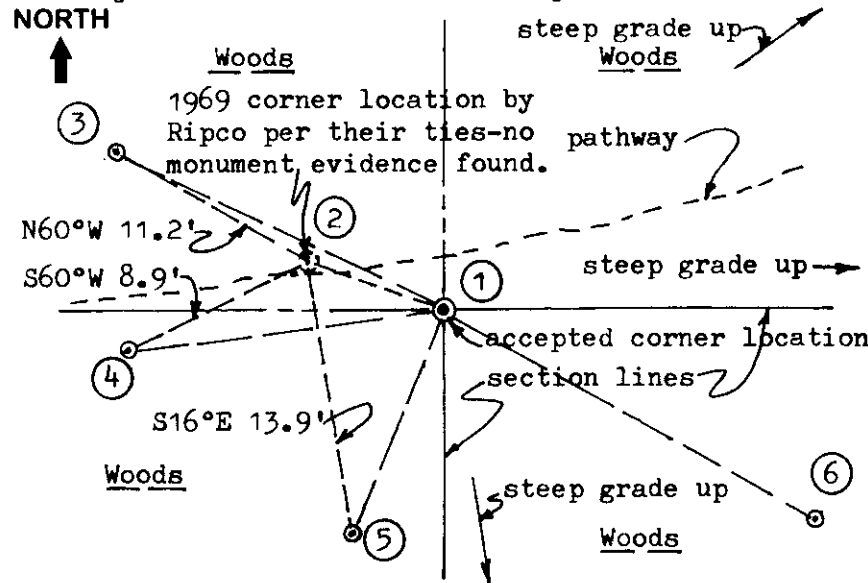
~~SECTION~~ (TOWN) OF: Newbold COUNTY OF: Oneida

Note: See reverse side for section control traverse data.

Description of monument found or placed and all other evidence used as a basis for monument location; including all monuments and related measurements required if the corner location is reestablished by lost corner proportionate methods. Also indicate name of original surveyor, survey date, corner monument set and established bearing trees, witness or reference monuments with ties from available records.

Found and accepted an older 2" dia. iron pipe monument painted with blue tree marking paint and with uncapped top 15" above existing grade. I carefully removed the plumb 30" long iron pipe and replaced it with a standard 2" dia. by 30" long aluminum pipe monument with stamped Oneida County cap 2" above grade. I also found an oval shaped 1" dia. iron pipe marker pipe along the North side of older 2" dia. iron pipe found and painted blue & yellow. I also removed the marker pipe 5 1/2' long and left it flat on grade with the removed 2" dia. iron pipe monument along the South side of new aluminum corner monument set. In 1863, Daugherty/GLO set a wood post as the original corner and marked OBTs, an 8" Aspen S24°E 16 lks and a 12" Py N64°W 37 lks, which are all now obliterated. In 1927, Harrington/GLO found and accepted an old oak post as the section corner monument during a resurvey, but set no BLM standard iron pipe/capped monument nor noted any BT ties; however, he noted he had found original evidence for the GLO MC West of the old oak post at 9.91 chains, which was within 6 feet of the 10 chain distance recorded by GLO in 1863. Subsequent record surveys by Poskie/1958, Branham/1958, and Fisher/Roberts/1964 further substantiate the location of section corner per this location record; see reverse side for further information. In 1969, Ripco established a location for this corner by retracement of a previous survey along the East line of Section 33 by Wincentzen per Genisot Engineering Plat of Survey No. 1811-1, and noted ties to three(3) BTs which I found and noted below; I found no corner monument by Ripco. I therefore traversed West to the GLO MC monument found at Flannery Lake, which in my opinion further verified the location of the corner referenced by this record.

Plan view map of monument location with bearing and distance ties to a minimum of four(4) described witness or reference monuments of concrete, natural stone, iron, live bearing trees or equivalent material. If applicable, also show a minimum of two(2) bearing and distance ties to any other monument found and not accepted; including the bearing and distance from the accepted monument. Indicate the basis for bearings of reference ties if not referenced to magnetic north.



WITNESS MONUMENT TIES: From (1).

- (2) Corner location per record ties by Ripco N76°W 8.15'.
- (3) Record BT 10" Mr N64°W 18.98'; upper & lower face blazes shut but plain.
- (4) Record BT 12" Mr S83°W 16.46'; upper & lower face blazes shut but plain.
- (5) Record BT 9" Mr S22°W 12.40'; upper & lower face blazes shut but plain.
- (6) New BT 9" Mr S60°E 22.11'.

Note: Standard white poly 'T' corner marker post set 6" North of corner monument at (1).

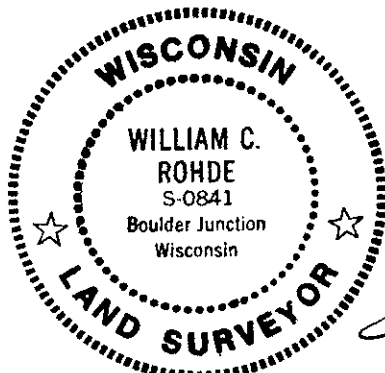
SCALE: 1" = 10' Recovery completed 9-29-98.

Unless otherwise indicated, all bearing tree ties are to a .25" dia. by 2.5" long PK nail with a 1.25" dia. steel washer driven into unblazed right face and a .25" dia. by 2.5" long PK nail with a 2" dia. steel washer stamped 'BT' is also driven into unblazed face of bearing tree at DBH; the basis for measured bearings is magnetic to nearest degree and all tie distances are horizontal measure to nearest 1/100th feet.

LAND SURVEYOR CERTIFICATION:

I, William C. Rohde, hereby certify that I am a duly licensed Professional Land Surveyor in Wisconsin, that this USPLS monument location was determined by me or under my direction and control, and that this U.S. Public Land Survey Monument Location Record is true and correct to the best of my knowledge and belief.

William C. Rohde Date: 01-10-99
Signature



RLS SEAL

SHEET NO. 1 OF 1

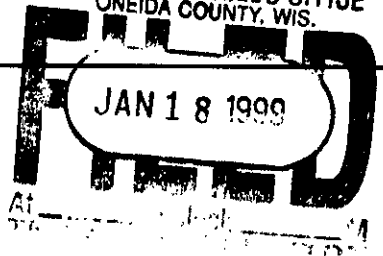
This form is intended to fulfill requirements of Chapter A-E 7.08 (3)(a)(b)(c)(d)(e)(f)(g)(h)(i) U.S. Public Land Survey Monument Location Record, Wisconsin Administrative Code. Use reverse side for geodetic location data and/or continuation purposes.

		34	

SECTION LOCATION MAP

INDEX NO. 3708280000

INDEX NO. 13



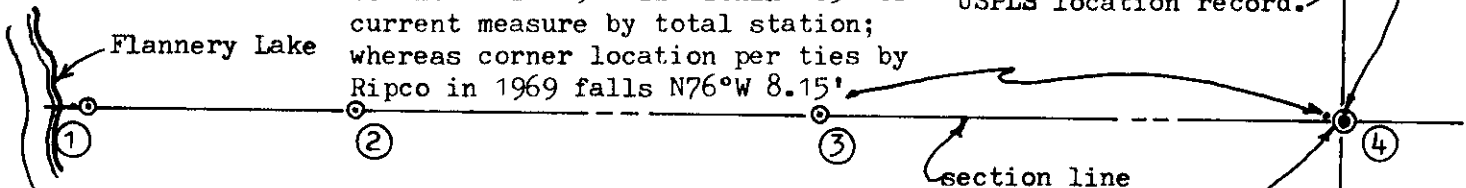
SECTION CONTROL TRAVERSE DATA

All field traverse measurements by Topcon ET-1 Total Station.

Monumentation recovery and traverse work was witnessed by David Kock, adjoining owner at 4005 Sunset Drive, who agreed with my retracement of section line as being his north boundary by previous surveys.

Note: Wincentzen survey distance of 654.6' from this section corner West to GLO MC in 1948 is within 1.5' of current measure by total station; whereas corner location per ties by Ripco in 1969 falls N76°W 8.15'

Section corner per this USPLS location record.



Note: See 1927 GLO Resurvey field notes filed as L-357 in Oneida County records and 1927 GLO Resurvey plat filed as B-1742.

In 1964 Fisher/Roberts noted a 2" dia. iron pipe 12" up, and a 3" square post at this corner location.

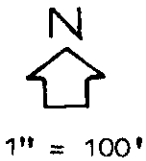


Table of Monumentation:

- ① Standard 2" O.D. iron pipe monument found with stamped brass cap per 1927 GLO Resurvey notes. (See record ties)
- ② 1" dia. by 30" long iron pipe set with uncapped top 18" above grade due to sub-surface roots.
- ③ 3/4" dia. by 12" long iron rod set with standard yellow poly cap flush to grade; falls 3' West of West edge of existing blacktop roadway mat.
- ④ Standard 2" dia. by 30" long aluminum pipe monument with stamped Oneida County cap per this USPLS location record.

Table of Courses:

- 1 - 2 N89°50'56"E 139.40'.
- 2 - 3 N89°50'56"E 241.00'.
- 3 - 4 N89°50'56"E 275.71'.
- 1 - 4 N89°50'56"E 656.11' by this traverse.

Note: See Ripco Book 4 Pages 146 & 147 in Oneida County records Re: 1969 survey to establish this corner location, which I did not accept, as their location per ties would not compare with record surveys by several feet.

- 660.0' per Daugherty/GLO 1863
- 654.06' per Harrington/BLM Resurvey 1927
- 654.72' per Branham 1956
- 655.8' per Fisher/Roberts of Northwoods Surveyors 1964.

Notes:

654.6' per Wincentzen/Genisot 1948 Drawing No. 1811 which notes a 6" sq. post & OBT.

2" dia. iron pipe found 10" below grade S84°01'53"W 10.00' from ③

2" dia. iron pipe found S06°53'17"W 108.32' from ③

3/4" dia. iron pipe found 3" below grade S33°31'26"W 5.96' from ③

1956 survey reference by Branham is per plat of survey copy on file at Foltz & Associates, Inc. in Minocqua, Wis.

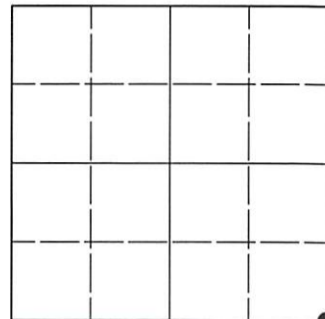
In 1964, Fisher/Roberts also note that they retraced a 1958 survey by Poskie which verified location of GLO MC at ① and section corner at ④ also see record plat of surveys A-397 and B-2955.

U.S. PUBLIC LAND SURVEY MONUMENT RECORD

Note: This form is intended and designed to fulfill all requirements of Wisconsin Administrative Code, Chapter A-E 7.08 U.S. Public Land Survey Monument Record (3)(a-i).

(a) CORNER LOCATION
 Cor. of Secs. 27, 28, 33 & 34
 Township 37 North
 Range 8 East of the 4th P.M.
 Town of Newbold
 County of Oneida

WISCORS - Oneida County
 N: 173,030.89 USft
 E: 243,465.57 USft
 Datum: NAD 83(2011) ep. 2010.00
 GNSS Method: RTN - Offset
 GNSS Control: WISCORS VRS



Sec. 28, T. 37 N., R. 8 E.

(b)(f)(g)(h) Description of monument found at this corner and if it was accepted, state all evidence (material, testimonial, occupational, plats, records, other monuments) used as a basis for accepting. If not accepted or if nothing was found, state evidence used as basis for establishing location. If re-established through lost corner proportionate methods, indicate all monuments, distances and directions used to establish. Indicate type of monument and sign post found or set.

This record is a perpetuation of the following land corner document(s):

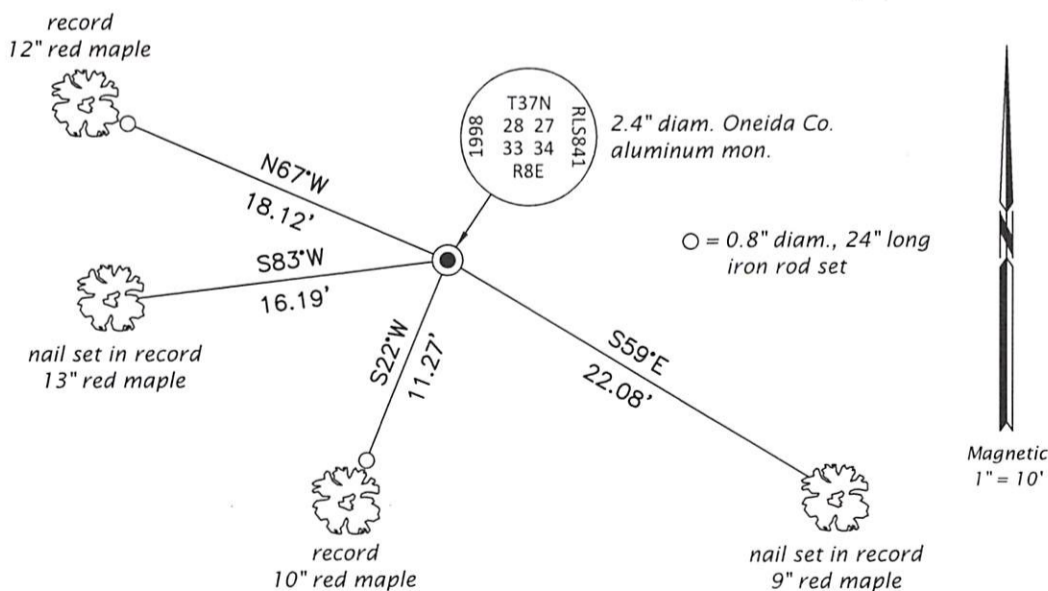
January 10, 1999: USPLS Monument Record by William C. Rohde, filed in Oneida County

A complete history of the corner can be found on the previous land corner document(s). I accept the record activity as a true and faithful perpetuation or reestablishment of the original corner location and further perpetuate it as described below.

August 5, 2022: I found and accepted the record monument, a 2.4" diam. aluminum pipe, firmly set, with a 3.3" diam. Oneida Co. aluminum cap flush with the ground surface. I found or established accessories as indicated below. I found a white vinyl sign post bearing North, 0.5 ft.

The coordinate value shown has been determined by traversing from two or more GNSS offset points satisfying the accuracy requirements defined and qualified in the 2022 Oneida County Fee Schedule for USPLS Corners.

(c)(d)(e) Plan view of corner with ties to at least 4 witness monuments. If in disagreement with previously established corner, show the distances between the two corners and also indicate the ties to the disputed.



REGISTER OF DEEDS OFFICE
 ONEIDA COUNTY
 FILED

NOV 14 2022

KYLE J. FRANSON
 REGISTER OF DEEDS

(i) I, Jeffrey W. Austin, Professional Land Surveyor No. S-1885, hereby certify that the corner location on this record was determined by me or under my direction and control and that this U.S. Public Land Survey Monument Record is correct and complete to the best of my knowledge and belief.

 Signature

SEP 17 2022

 Date