

JAN 18 1999

U.S. PUBLIC LAND SURVEY MONUMENT LOCATION RECORD

Recorders Data

CORNER: East MC SECTION: 33 TOWNSHIP 37 NORTH RANGE 8 EAST WEST

FOR M.C. CORNER INDICATE: NAME OF WATERWAY Flannery Lake SECTION LINE North

~~CITY/VILLAGE~~ (TOWN) OF: Newbold COUNTY OF: Oneida

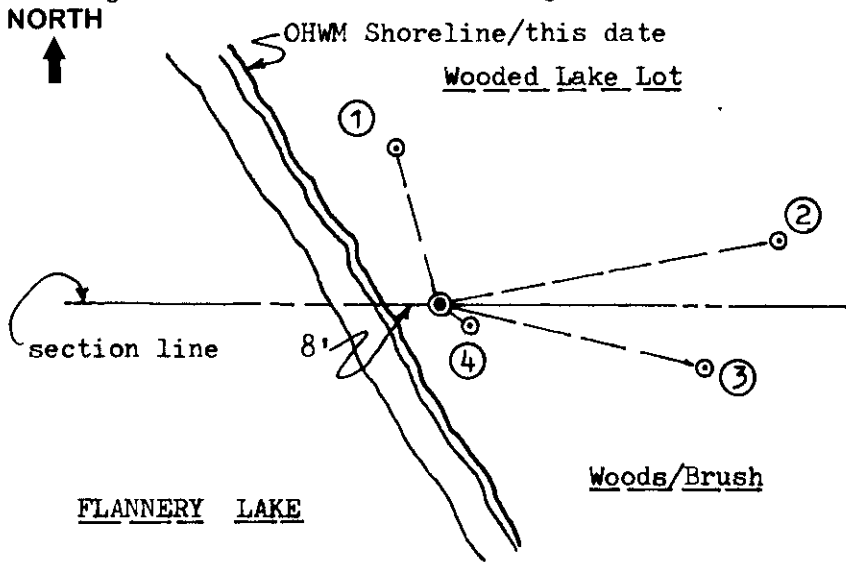
Description of monument found or placed and all other evidence used as a basis for monument location; including all monuments and related measurements required if the corner location is reestablished by lost corner proportionate methods. Also indicate name of original surveyor, survey date, corner monument set and established bearing trees, witness or reference monuments with ties from available records.

Found and accepted a standard 2" O.D. iron pipe monument with stamped 1927 GLO brass cap tipped 30° +/- East and 24" above grade. I carefully dug out the 36" long iron pipe and set it back into plumb hole cavity below grade with cap 10" above grade and tamped secure for new ties. Had to dig out the iron pipe as bottom end had a flared split bottom end for soil anchoring purposes. In 1863, Daugherty/GLO set a wood post as the original MC and marked OBTs, a 12" Py N44°E 8 lks, now found as a badly rotted stump stub at grade N42°E, and a 12" Py S77°E 21 lks, now found as a nearly obliterated root crown in a shallow stump hole depression S75°E.

In 1927, Harrington/GLO during a resurvey of Section 33, found and accepted an iron pipe at the MC location and reset it with GLO capped iron pipe found this date; and he noted that he found 18" Py OBT stump S77°E 21 lks with scribing gone but old axe marks plain, and also that he found a fallen 16" Py OBT N44°E 8 lks with old blaze and scribe marks plain; he noted no new BTs as he considered existing OBT evidence sufficient for many years to come.

In 1958, a plat of survey by Poskie in Foltz & Associates, Inc. of Minocqua files denotes a GLO monument at this corner. In 1964, Griffin, Fisher and Roberts of Northwoods Surveyors note this corner as a GLO capped iron pipe per Plats of Survey filed as A-397 and B-2955 in Oneida County records and also per field notes in Foltz & Associates, Inc. files as well.

Plan view map of monument location with bearing and distance ties to a minimum of four(4) described witness or reference monuments of concrete, natural stone, iron, live bearing trees or equivalent material. If applicable, also show a minimum of two(2) bearing and distance ties to any other monument found and not accepted; including the bearing and distance from the accepted monument. Indicate the basis for bearings of reference ties if not referenced to magnetic north.



WITNESS MONUMENT TIES:

- ① New BT South 12" trunk of 7 Mr clump N15°W 25.25'.
- ② New BT 7" Mr N80°E 54.14'.
- ③ New BT 9" Pr S76°E 42.66'.
- ④ New BT 7" Pr S57°E 6.18'.

Note: Standard white poly 'T' marker post set 7" West of MC monument.

Recovery witnessed by David Kock, local resident at 4005 Sunset Drive.

Recovery completed 9/29/98.

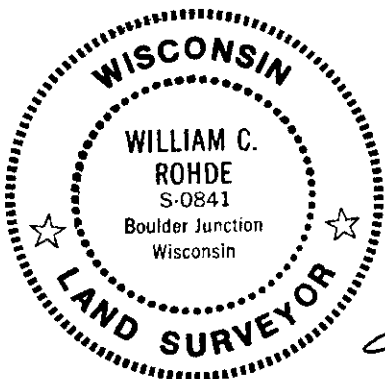
SCALE: 1" = 30'

Unless otherwise indicated, all bearing tree ties are to a .25" dia. by 2.5" long PK nail with a 1.25" dia. steel washer driven into unblazed right face and a .25" dia. by 2.5" long PK nail with a 2" dia. steel washer stamped 'BT' is also driven into unblazed face of bearing tree at DBH; the basis for measured bearings is magnetic to nearest degree and all tie distances are horizontal measure to nearest 1/100th feet.

LAND SURVEYOR CERTIFICATION:

I, William C. Rohde, hereby certify that I am a duly licensed Professional Land Surveyor in Wisconsin, that this USPLS monument location was determined by me or under my direction and control, and that this U.S. Public Land Survey Monument Location Record is true and correct to the best of my knowledge and belief.

William C. Rohde Date: 01-10-99
Signature



RLS SEAL

SHEET NO. 1 OF 1

This form is intended to fulfill requirements of Chapter A-E 7.08 (3)(a)(b)(c)(d)(e)(f)(g)(h)(i) U.S. Public Land Survey Monument Location Record, Wisconsin Administrative Code. Use reverse side for geodetic location data and/or continuation purposes.

		33	

SECTION LOCATION MAP

INDEX NO. _____

INDEX NO. V 12-13

370828005

MAY 16

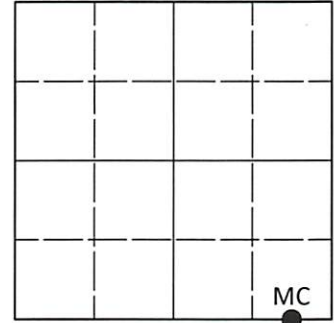
KYLE J. FRANSON
REGISTER OF DEEDS

U.S. PUBLIC LAND SURVEY MONUMENT RECORD

Note: This form is intended and designed to fulfill all requirements of Wisconsin Administrative Code, Chapter A-E 7.08 U.S. Public Land Survey Monument Record (3)(a-i).

(a) CORNER LOCATION
Meander Cor. of Secs. 28 & 33
Township 37 North
Range 8 East of the 4th P.M.
Town of Newbold
County of Oneida

WISCRS - Oneida County
N: 173,061.83 USft
E: 242,810.31 USft
Datum: NAD 83(2011) ep. 2010.00
GNSS Method: Static - Offset
GNSS Control: CenterPoint RTX



Sec. 28, T. 37 N., R. 8 E.

(b)(f)(g)(h) Description of monument found at this corner and if it was accepted, state all evidence (material, testimonial, occupational, plats, records, other monuments) used as a basis for accepting. If not accepted or if nothing was found, state evidence used as basis for establishing location. If re-established through lost corner proportionate methods, indicate all monuments, distances and directions used to establish. Indicate type of monument and sign post found or set.

This record is a perpetuation of the following land corner document(s):

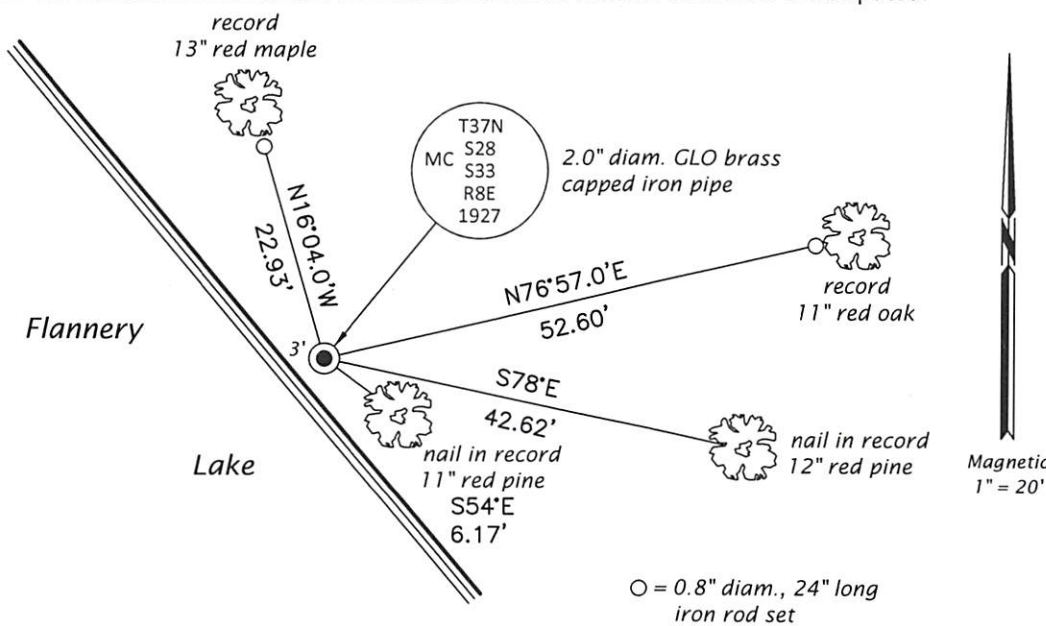
January 10, 1999: USPLS Monument Record by William C. Rohde, filed in Oneida County

A complete history of the corner can be found on the previous land corner document(s). I accept the record activity as a true and faithful perpetuation or reestablishment of the original corner location and further perpetuate it as described below.

April 21, 2023: I found and accepted the record monument, a 2.0" diam. iron pipe, firmly set, with a 2.5" diam. GLO brass cap projecting 7" above the ground surface. I found or established accessories as indicated below. I found a white vinyl sign post bearing Northwest, 0.5 ft.

The coordinate value shown has been determined by traversing from two or more GNSS offset points satisfying the accuracy requirements defined and qualified in the 2022 Oneida County Fee Schedule for USPLS Corners.

(c)(d)(e) Plan view of corner with ties to at least 4 witness monuments. If in disagreement with previously established corner, show the distances between the two corners and also indicate the ties to the disputed.



REGISTER OF DEEDS OFFICE
ONEIDA COUNTY
FILED

MAY 16 2023

KYLE J. FRANSON
REGISTER OF DEEDS

(i) I, Jeffrey W. Austin, Professional Land Surveyor No. S-1885, hereby certify that the corner location on this record was determined by me or under my direction and control and that this U.S. Public Land Survey Monument Record is correct and complete to the best of my knowledge and belief.

MAY 1, 2023
Date