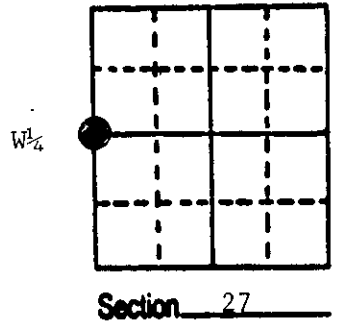


U.S. PUBLIC LAND SURVEY MONUMENT RECORD

Note: This form is intended and designed to fulfill all requirements of Wisconsin Administrative Code, Chapter A-E 5.02, U.S. Public Land Survey Monument Record (3) (a) (b) (c) (d) (e) (f) (g) (h) (i). An additional sheet may be added if necessary to conform with said requirements.

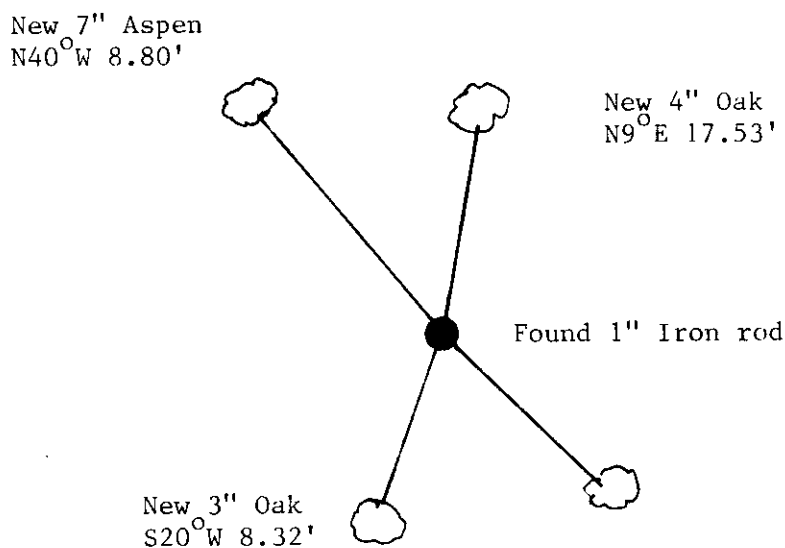
(a) Corner location: Township 37 North
 Range 8 East/West
 Town/City/Village Newbold
 County Oneida



(b) (f) (g) (h) Description of monument found at this corner and if it was accepted, state all evidence (material, testimonial, occupational, plats, records, other monuments) used as a basis for accepting. If not accepted or if nothing was found, state evidence used as basis for establishing location. If reestablished through lost corner proportionate methods, indicate all monuments, distances and directions used to establish.

- 1863 W.E. Daugherty established original corner at 40 chains north of the SW corner of Sec. 27 B.T.s Y. Pine 15 s54°W 57lks., Y. Pine S74°E 24lks.
 - 1931 H.C. Hall Oneida County Surveyor ran northerly from the SW corner of Sec. 27 to the NW corner of Sec. 27 and set 1/4 corner by proportionate measure, 34.863 chains per 1/2 mile, did not find any evidence of the original corner. B.T.s Blk. Pine 9°N4-35E .152ch., Blk. Pine 14 S4W.565
 - 1976 Sy Poskie indicates an iron rod marking the W 1/4 of Sec. 27. Poskie stated that he previously set a 2" iron pipe for the W 1/4 which is 4.15' northeasterly of the iron rod because he could not find Halls corner, however in a subsequent survey he found Halls position marked by the iron rod and accepted it for the correct location of the 1/4 corner.
 - 1986 I found the iron rod and accepted this position marking the 1/4 corner which was established and used since 1931. I witnessed the corner as shown below.
- Distance to NW corner 27 2,300.88'; distance to E 1/4 corner 5,536.34'.

(c) (d) (e) Plan view of corner with ties to at least 4 witness monuments. If in disagreement with previously established corner, show the distances between the two corners and also indicate the ties to the disputed corner.

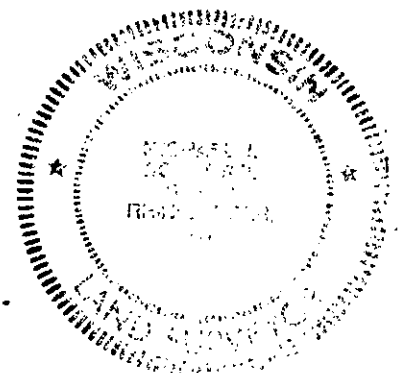


- Magnetic Bearings Taken With Handheld Compass
- Distance to 6" Nail in Side of tree
- No Scale



(i) I, Michael J. Romportl R.L.S. 1624
 (type or print name) certify that the corner location on this record was determined by me or under my direction and control and that this U.S. Public Land Survey Monument Record is correct and complete to the best of my knowledge and belief.

Michael J. Romportl 12/30/87
 Signature Date
 GENISOT & ASSOCIATES INC.
 1512 EAGLE ST., RHINELANDER, WIS.



3708282000

U.S. PUBLIC LAND SURVEY MONUMENT RECORD

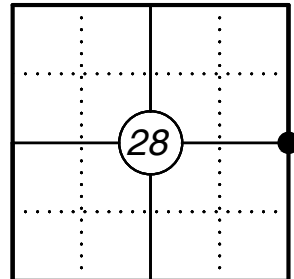
This form is intended and designed to fulfill all requirements of Wisconsin Administrative Code, Chapter A-E 7.08 U.S. Public Land Survey Monument Record (3) (a)(b)(c)(d)(e)(f)(g)(h)(i). An additional sheet may be added if necessary to confirm with said requirements.

Oneida County
Land Information Office
Filed
2/25/2025

(a) Corner Location:

E 1/4 Corner Section 28
Township 37 North
Range 8 East
Town Of Newbold
County of Oneida

Corner ID: 3708282000



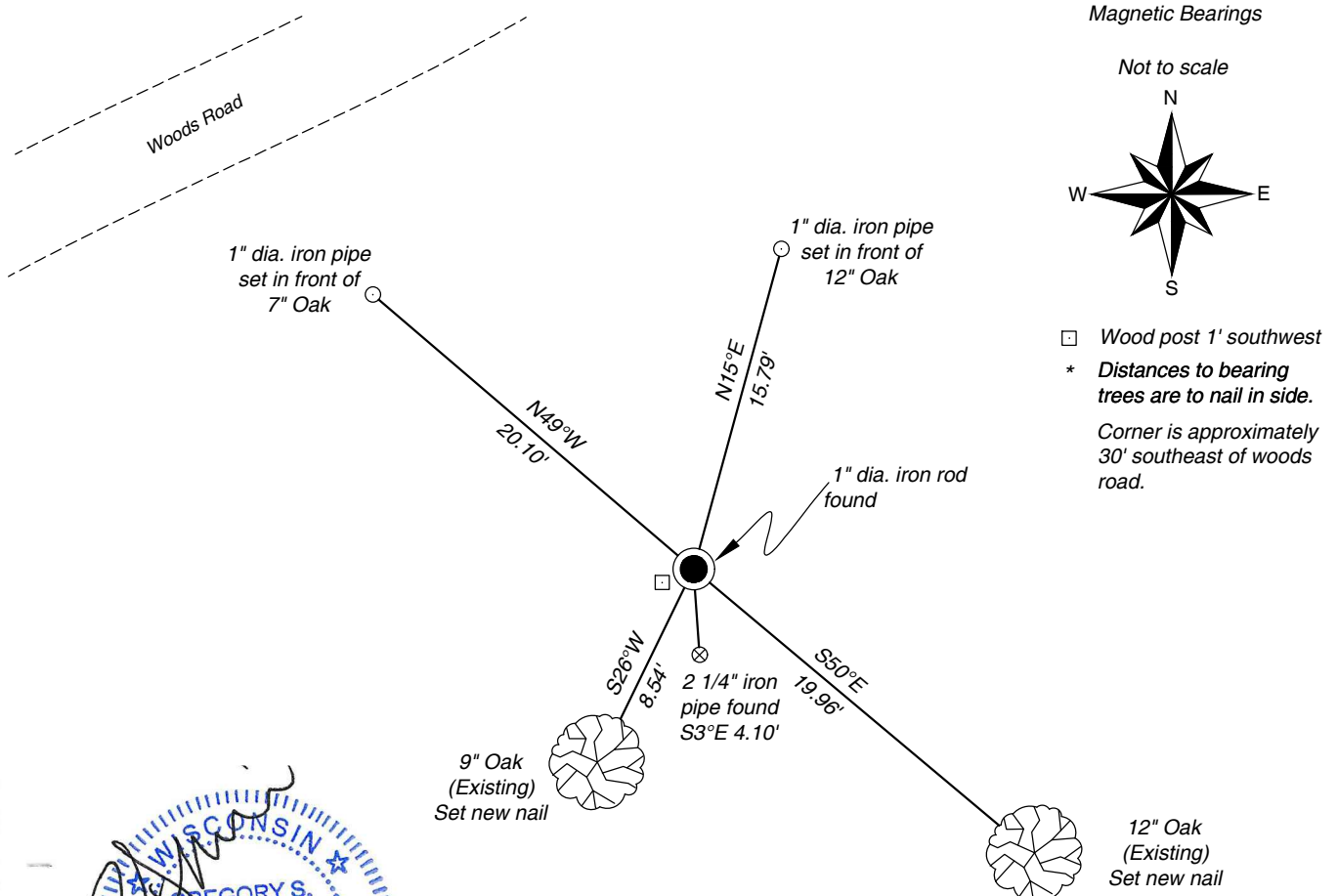
(b) History of Original Corner:

For corner history, see previous U.S. Public Land Survey Monument Record by Michael J. Romportl dated December 30, 1987.

(f)(g)(h) Description of monument found at this corner and if it was accepted, state all evidence (material, testimonial, occupational, plats, records, other monuments) used as a basis for establishing location. If reestablishing through lost corner proportionate methods, indicate all monuments, distances, and directions used to establish. Indicate type of monument and sign post found or set.

07/08/2024 - I found a 1" diameter iron rod at the corner location, two existing bearing trees and the 2" iron pipe which is southeast of the corner instead of northeast as indicated by Romportl. I set two iron pipes and witnessed the corner as shown below.

(c)(d)(e) Plan view of corner with ties to at least four witnesses. If in disagreement with previously established corner, show the distances between the two corners and also indicate the tie to the disputed corner.



Gregory S. Maines
 WISCONSIN
 GREGORY S. MAINES
 S-2729
 EAGLE RIVER
 WI
 LAND SURVEYOR
 1/8/24

Certification

I, Gregory S. Maines, Professional Land Surveyor No. 2729, hereby certify that the corner location on this record was referenced by me or under my direction and control and that this U.S. Public Land Survey Monument Record is complete to the best of my knowledge and belief. REF: 2024131

Index No.: