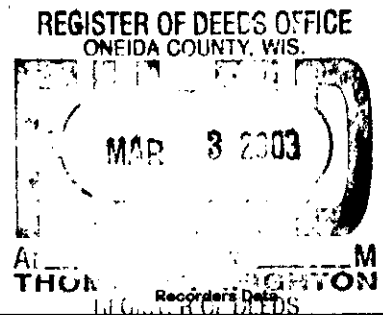


This form is intended to fulfill the requirements of Chapter A-E 7.08 (3)(a) thru (i) U.S. Public Land Survey Monument Location Record, Wisconsin Administrative Code. Use the reverse side of form for continuation.



U.S. PUBLIC LAND SURVEY MONUMENT LOCATION RECORD

USPLS CORNER: WEST WITNESS MC SECTION: 31 TOWNSHIP: 37 NORTH RANGE: 8 EAST
 NAME OF WATERWAY FOR M.C. CORNER: SOO LAKE SECTION LINE: NORTH
 (CITY)(VILLAGE)(TOWN) OF: NEWBOLD COUNTY OF: ONEIDA

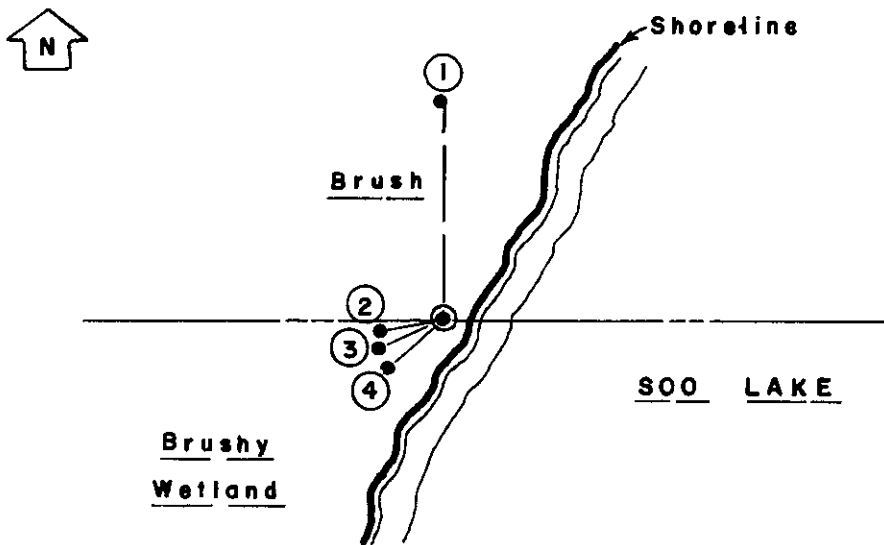
Description of monument found or placed and all other evidence used as the basis for monument location; including monuments and related measurements required if the corner location was reestablished by lost corner proportionate methods. Also indicate name of original surveyor, original survey date and the corner monument, bearing trees, witness or other reference monuments established; including measured bearing and distance ties, from available records.

I found and accepted an old undisturbed and plumb 1" dia. iron pipe with uncapped top 3" up at this corner in a cairn of rocks at grade about 2.5' West of existing lakeshore bearing S30°W +- this date; I left the old iron pipe in place and drove a standard 2" dia. by 30" long aluminum pipe monument with stamped Oneida County cap 5" up over the old iron pipe. The corner falls at the bottom of a steep brushy bank slope about 45° up to the NW, at frontage of an improved lake lot with buildings. The steep brushy bank limited my selection of bearing trees for new horizontal ties to those listed below.

- In July 1863, William E. Daugherty/GLO did not set an original wood post as a meander corner per record notes.
- In September 1948, F.R. Wincentsen/RLS 155 notes a 6" square MC post and 6" Oak BT S78°W 12 links only as no others noted near, per Plat of Survey filed as C-1928 in Oneida County survey records.
- In September 1950, N.M. Rowinski/RLS ? notes a 1" iron pipe at this witness MC per legend on Plat of Survey filed as B-1809 in Oneida County survey records.
- In September 1954, Ivan Branham notes a square hub in rock mound on lake shore at this corner and a 6" Oak BT S74°W 11 links on steep bank per Oneida County survey records.
- In May 1962, Sy M. Poskie/RLS 140 notes an iron pipe at this witness MC by legend per Plat of Survey filed as B-1871 in Oneida County survey records.
- In August 1985, Todd Loftus/RLS 1523 notes this witness MC per Plat of Survey filed as B-1527 in Oneida County survey records.

This recovery completed October 16, 2002; there were no direct witnesses.

Plan view map of monument location with bearing and distance ties to a minimum of four(4) described witness or reference monuments of concrete, natural stone, iron, live bearing trees or equivalent material. If applicable, also show a minimum of two(2) bearing and distance ties to any other monument found and not accepted; including the bearing and distance from the accepted monument.



WITNESS MONUMENT TIES:

- ① New 15" Mr BT North 22.53'.
- ② North 15" trunk of old Oak BT S80°W 6.73'.
- ③ Root crown crotch between center and North 15" trunks of old Oak BT S67°W 6.95'.
- ④ South 15" trunk of old Oak BT S50°W 7.57'.

A probable lower blaze fissure found at root crown of center 15" trunk of old Oak BT. All ties are measured to my standard PK nail with washer. I set a standard white poly "T" marker post 8" SE of the corner monument.

SCALE: 1" = 20'

Unless otherwise indicated, all bearing tree ties are to a .25" dia. by 2.5" long PK nail with a 1.25" dia. steel washer driven into unblazed right face and a .25" dia. by 2.5" long PK nail with a 2" dia. steel washer stamped BT is also driven into unblazed face of bearing tree at DBH; the basis for measured bearings is by compass to nearest degree and all tie distances are measured horizontal by steel tape corrected to nearest 1/100th feet at standard temperature of 68° F.

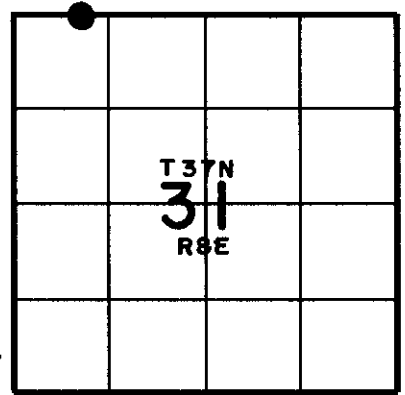
RLS SEAL:



LAND SURVEYOR CERTIFICATE:

I, William C. Rohde, hereby certify that I am duly licensed as a Professional Land Surveyor in the State of Wisconsin; that this USPLS monument location was determined by me and/or under my direct supervision and control; and that this U.S. Public Land Survey Monument Location Record is true and correct to the best of my knowledge and belief.

Signed: *William C. Rohde*
 William C. Rohde RLS 841



SECTION LOCATION MAP

INDEX NO. V 1-2

Date Signed: March 1, 2003

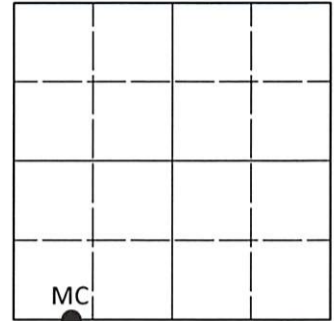
3708 300033

U.S. PUBLIC LAND SURVEY MONUMENT RECORD

Note: This form is intended and designed to fulfill all requirements of Wisconsin Administrative Code, Chapter A-E 7.08 U.S. Public Land Survey Monument Record (3)(a-i).

(a) CORNER LOCATION
 Meander Cor. of Secs. 30 & 31
 Township 37 North
 Range 8 East of the 4th P.M.
 Town of Newbold
 County of Oneida

WISCRS - Oneida County
 N: 172,568.46 USft
 E: 229,812.12 USft
 Datum: NAD 83(2011) ep. 2010.00
 GNSS Method: RTN - Direct
 GNSS Control: WISCORS VRS



Sec. 30, T. 37 N., R. 8 E.

(b)(f)(g)(h) Description of monument found at this corner and if it was accepted, state all evidence (material, testimonial, occupational, plats, records, other monuments) used as a basis for accepting. If not accepted or if nothing was found, state evidence used as basis for establishing location. If re-established through lost corner proportionate methods, indicate all monuments, distances and directions used to establish. Indicate type of monument and sign post found or set.

This record is a perpetuation of the following land corner document(s):

March 1, 2003: USPLS Monument Record by William C. Rohde, filed in Oneida County

A complete history of the corner can be found on the previous land corner document(s). I accept the record activity as a true and faithful perpetuation or reestablishment of the original corner location and further perpetuate it as described below.

June 22, 2023: I found and accepted the record monument, a 2.4" diam. aluminum pipe, firmly set, with a 3.3" diam. Oneida Co. aluminum cap projecting 6" above the ground surface. I found or established accessories as indicated below. I found a white vinyl sign post bearing SE, 0.6 ft.

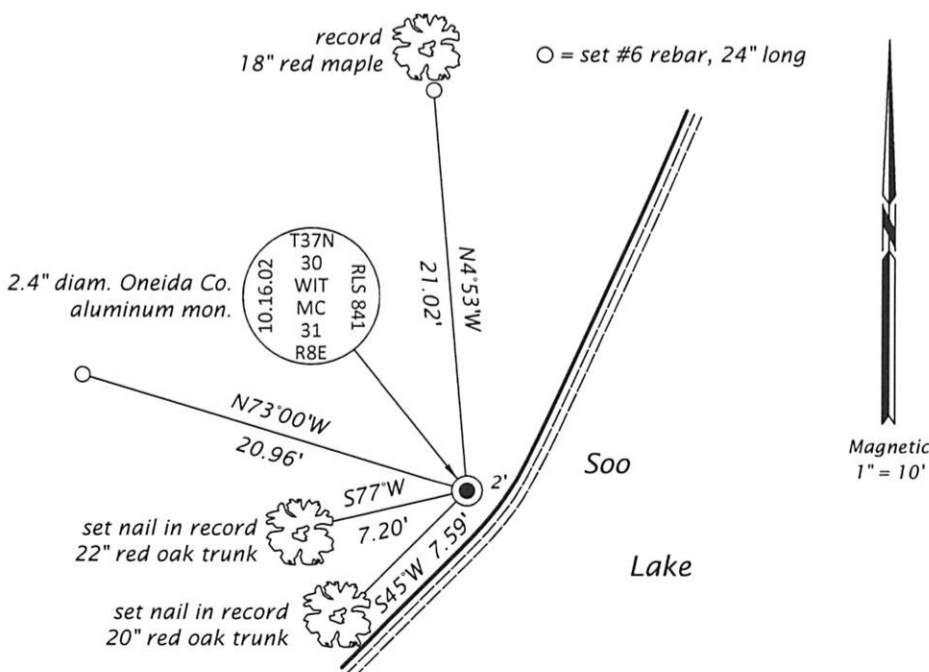
The coordinate value shown is the weighted mean of two or more GNSS observations at markedly different times satisfying the accuracy requirements defined and qualified in the 2022 Oneida County Fee Schedule for USPLS Corners.

REGISTER OF DEEDS OFFICE
 ONEIDA COUNTY
 FILED

JUL 06 2023

KYLE J. FRANSON
 REGISTER OF DEEDS

(c)(d)(e) Plan view of corner with ties to at least 4 witness monuments. If in disagreement with previously established corner, show the distances between the two corners and also indicate the ties to the disputed.



(i) I, Jeffrey W. Austin, Professional Land Surveyor No. S-1885, hereby certify that the corner location on this record was determined by me or under my direction and control and that this U.S. Public Land Survey Monument Record is correct and complete to the best of my knowledge and belief.

Signature

JULY 1, 2023
 Date