

CERTIFIED LAND CORNER RESTORATION

State of Wisconsin }
County of Oneida } ss.

I, James D. Rein, do hereby certify that on the 9th day of April, 1979, I found evidence of the East One-quarter corner of Section 30 Township 37 North, Range 8 East, Fourth Principal Meridian, as described hereon; and that from this evidence I established ~~a new monument and~~ accessories as described hereon to perpetuate the original location of this corner:

Description of original monument and accessories and subsequent restorations:

Wood Post set by William E. Dougherty, Deputy Surveyor on July 24th, 1863, witnessed by a 6" aspen bearing S19°W, 16 links (10.56 feet), 7" aspen N53°E, 4 links (2.63 feet) D. N. Vaughn, County Surveyor, January 1899 found original bearing trees, Orig. Aspen is a white pine made bts 16" aspen stub S 14-1/2 links (9.57 feet), 8" birch S79°W 14 links (9.24 feet) P. K. Vincentsen, County Surveyor, September 11th, 1948 D. N. Vaughn's 1/4 corner 5" x 5" post BT 7" pine S66°E, 45.5 lks (30.03 feet), 6" oak N78°W, 44.75 lks (29.54 feet)

Description of corner evidence found:

1" diameter galvanized iron pipe up 1 foot on the north edge of an east-west logging trail, witnessed by the following bearing trees:

- 9" oak N78°W, 28.93 feet
- 12" white pine S66°E, 29.25 feet
- 14" Norway pine S40°E, 51.31 feet

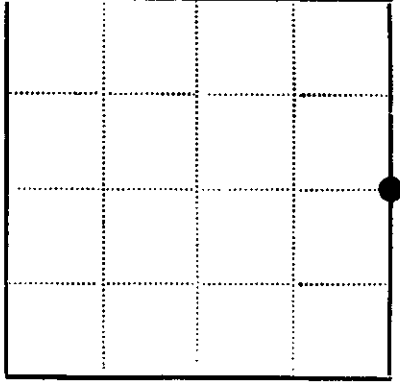
Description of ~~monument and~~ accessories I established to perpetuate the location of this corner:

Made ties to the existing 1" diameter iron pipe by setting P.K. nails in the existing bearing trees as follows:

- 9" oak N78°W, 28.93 feet
- 12" white pine S66°E, 29.25 feet
- 14" Norway pine S40°E, 51.31 feet



Section 30, T37N, R8E



● - Corner monument restored
□ -

Resident witnesses none

Dated at Minocqua Wisconsin, this 10th day of September, 1979.

Signature James D. Rein Title reg. Land Surveyor
(County Surveyor, Registered Land Surveyor, or other duly authorized official)

Surveyors Registration No. S-1234

Office of REGISTER OF DEEDS County of Oneida

I hereby certify that the within instrument was filed in this office for record on the 17th day of September 1982, and was filed in Book No. Page No. of County Records.

Signature Boris Terage Kuehn Title Register of Deeds

Township, Range, Section, Index No., Page No.

3708307000

JUN 12 2023

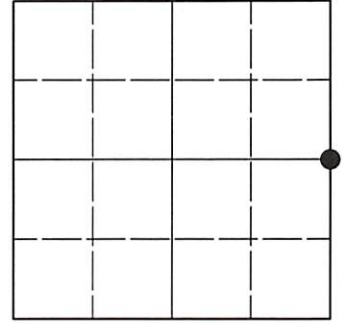
KYLE J. FRANSON
REGISTER OF DEEDS

U.S. PUBLIC LAND SURVEY MONUMENT RECORD

Note: This form is intended and designed to fulfill all requirements of Wisconsin Administrative Code, Chapter A-E 7.08 U.S. Public Land Survey Monument Record (3)(a-i).

(a) CORNER LOCATION
1/4 Cor. of Secs. 29 & 30
Township 37 North
Range 8 East of the 4th P.M.
Town of Newbold
County of Oneida

WISCRS - Oneida County
N: 175,115.00 USft
E: 232,148.32 USft
Datum: NAD 83(2011) ep. 2010.00
GNSS Method: RTN - Offset
GNSS Control: WISCORS VRS



Sec. 30, T. 37 N., R. 8 E.

(b)(f)(g)(h) Description of monument found at this corner and if it was accepted, state all evidence (material, testimonial, occupational, plats, records, other monuments) used as a basis for accepting. If not accepted or if nothing was found, state evidence used as basis for establishing location. If re-established through lost corner proportionate methods, indicate all monuments, distances and directions used to establish. Indicate type of monument and sign post found or set.

This record is a perpetuation of the following land corner document(s):

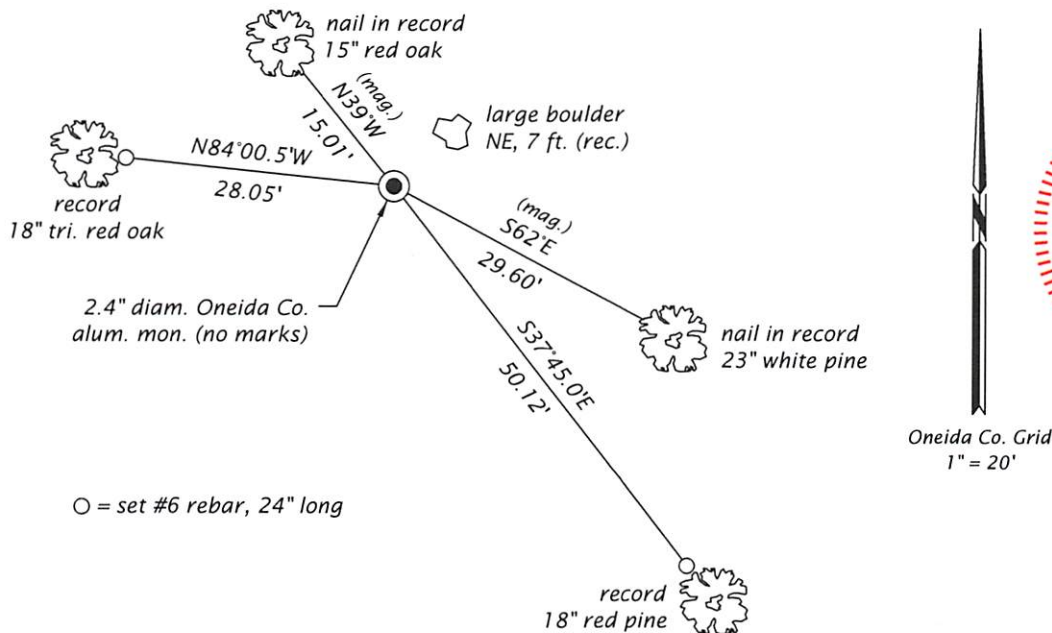
- September 10, 1979: Certified Land Corner Restoration by James D. Rein, filed in Oneida County
- December 9, 2010: USPLS Monument Record by Anthony R. Jones, filed in Oneida County

A complete history of the corner can be found on the previous land corner document(s). I accept the record activity as a true and faithful perpetuation or reestablishment of the original corner location and further perpetuate it as described below.

May 10, 2023: I found and accepted the record monument, a 2.4" diam. aluminum pipe, firmly set, with a 3.3" diam. unmarked Oneida Co. aluminum cap flush with the ground surface. The monument leans as described in the record. I found or established accessories as indicated below. I found a white vinyl sign post bearing Southeast, 0.6 ft.

The coordinate value shown has been determined by traversing from two or more GNSS offset points satisfying the accuracy requirements defined and qualified in the 2022 Oneida County Fee Schedule for USPLS Corners.

(c)(d)(e) Plan view of corner with ties to at least 4 witness monuments. If in disagreement with previously established corner, show the distances between the two corners and also indicate the ties to the disputed.



Oneida Co. Grid
1" = 20'

(i) I, Jeffrey W. Austin, Professional Land Surveyor No. S-1885, hereby certify that the corner location on this record was determined by me or under my direction and control and that this U.S. Public Land Survey Monument Record is correct and complete to the best of my knowledge and belief.

[Handwritten Signature]
Signature

JUNE 1, 2023
Date