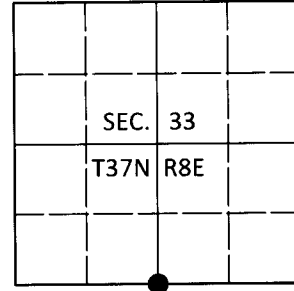


U.S. PUBLIC LAND SURVEY MONUMENT RECORD

Note: This form is intended and designed to fulfill all requirements of Wisconsin Administrative Code, Chapter A-E 7.08 U.S. Public Land Survey Monument Record (3)(a-i).

(a) CORNER LOCATION
 1/4 Cor. of Secs. 4 & 33
 Township 36 & 37 North
 Range 8 East of the 4th P.M.
 Town of Crescent & Newbold
 County of Oneida

WISCRS - Oneida County
 N: 167,508.04 USft
 E: 240,809.99 USft
 Datum: NAD 83(2011)
 GNSS Method: RTN - Direct
 GNSS Control: WISCORS VRS



(b) HISTORY OF ORIGINAL CORNER ESTABLISHMENT

Original Surveyor: _____ Original Accessories: _____
 Date of Survey Commenced: _____ See previous monument record(s)
 Completed: _____

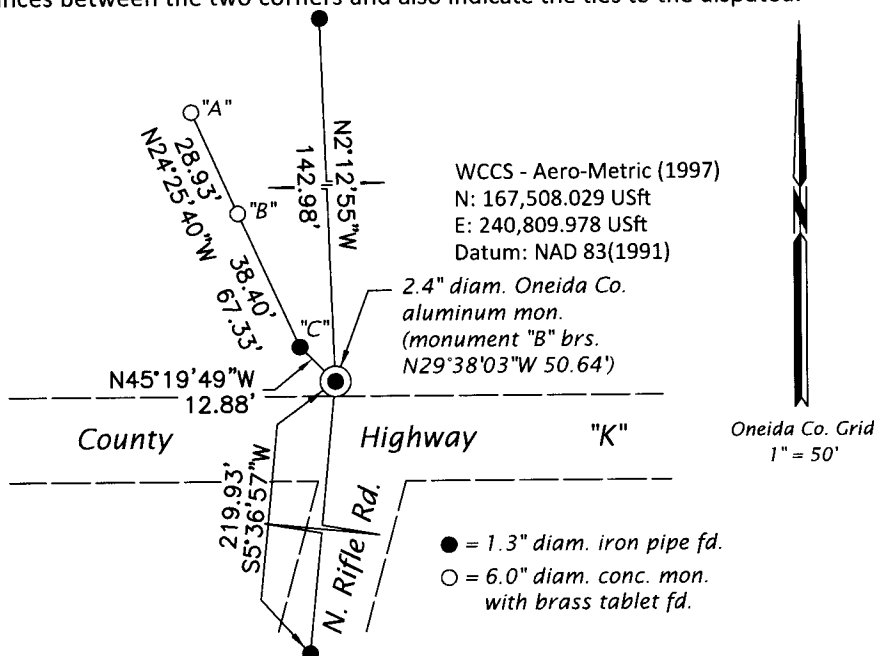
(b)(f)(g)(h) Description of monument found at this corner and if it was accepted, state all evidence (material, testimonial, occupational, plats, records, other monuments) used as a basis for accepting. If not accepted or if nothing was found, state evidence used as basis for establishing location. If re-established through lost corner proportionate methods, indicate all monuments, distances and directions used to establish. Indicate type of monument and sign post found or set.

This is a perpetuation of the following monument record(s) that comprise a complete history of the corner:

- Dec. 29, 1989: USPLS Monument Record No. 3708330020 by William E. Bandow, PLS*
- Sep. 14-26, 1927: GLO resurvey of Sec. 33 by Earl G. Harrington identifies the corner as "2" brass capped iron pipe."*
- May, 1968: On OCS map no. L-472, Wisconsin DOT does not identify the corner, but depicts it being on a 38.45 foot extension of a line connecting Wisconsin DOT reference monuments "A" and "B" as shown below.*
- May 5, 1977: On OCS map no. B-1207, William Immich does not identify the corner, but depicts it being 38.45 feet South of Wisconsin DOT reference monument "B" as shown below.*
- June 2, 2010: On OCS map no. L-2694, Michael Oestreich identifies the corner as "aluminum monument found in place."*
- Nov. 20, 2019: I found and accepted the record monument, a 2.4" diam. aluminum pipe with a 3.3" diam. Oneida Co. aluminum cap buried 12" beneath the road shoulder and 3 feet North of the paved surface. I found an iron pipe that appears to be a perpetuation of the DOT corner location, that being monument "C" as shown below. In comparing the record measurements of the GLO resurvey to other GLO corner locations in Sec. 33, it's clear that the monument of record is likely a perpetuation of the 1927 GLO corner location. As such, I accept Bandow's corner location and further perpetuate it as shown below. I found Oestreich's bearing trees at record bearing and distance. I found a white vinyl sign post bearing N4°E, 16.4 ft.*

The coordinate value shown has been verified by at least one of the following methods: 1) comparison to a previously GPS determined published value; 2) the value is the average of two or more GPS observations at a markedly different time; 3) one or more distances were measured back to the GPS observed corner from temporary GPS observed offset locations.

(c)(d)(e) Plan view of corner with ties to at least 4 witness monuments. If in disagreement with previously established corner, show the distances between the two corners and also indicate the ties to the disputed.



REGISTER OF DEEDS OFFICE
 ONEIDA COUNTY
 FILED

DEC 23 2019

KYLE J. FRANSON
 REGISTER OF DEEDS

(i) I, Jeffrey W. Austin, Professional Land Surveyor No. S-1885, hereby certify that the corner location on this record was determined by me or under my direction and control and that this U.S. Public Land Survey Monument Record is correct and complete to the best of my knowledge and belief.

[Handwritten Signature]
 Signature

5 DEC 2019
 Date