

U.S. PUBLIC LAND SURVEY MONUMENT RECORD

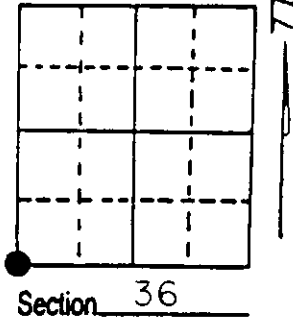
Note: This form is intended and designed to fulfill all requirements of Wisconsin Administrative Code, Chapter A-E 7.08 U.S. Public Land Survey Monument Record (3) (a) (b) (c) (d) (e) (f) (g) (h) (i). An additional sheet may be added if necessary to conform with said requirements.

(a) Corner location: Township 37 North

Range 8 East/West

Town/City/Village NEWBOLD

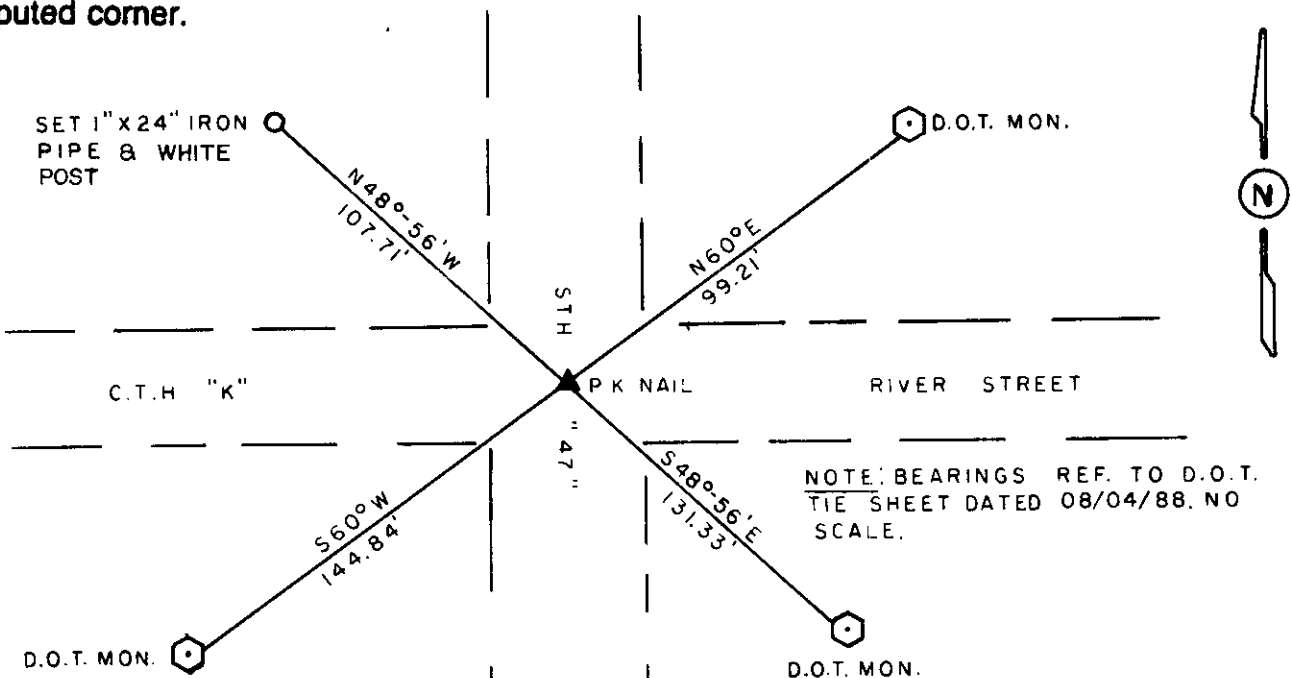
County ONEIDA



(b) (f) (g) (h) Description of monument found at this corner and if it was accepted, state all evidence (material, testimonial, occupational, plats, records, other monuments) used as a basis for accepting. If not accepted or if nothing was found, state evidence used as basis for establishing location. If reestablished through lost corner proportionate methods, indicate all monuments, distances and directions used to establish. Indicate type of monument found or set and sign post.

1860-Alfred Millard established original corner at 80 chains
 B.T.s White Pine 8" N 47 W 12 links, Maple 7" N 33 E 19 links
 Aspen 10" S 75 E 11 links, White Pine 8" S 82 W 21 links
 1890-BF Dorr recovers corner measures West 37.03 to lake
 1897-BF Dorr recovers corner measures East 39.85 to 1/4 corner.
 1917-DH Vaughn sets iron monument in fill of new road.
 1934-Hal Craig GLO surveyor at a point in center HWY 8 and on
 line with fence South approximate corner measures West 37.00
 to lake.
 1939-Maine at corner in center US HWY 8 run South to Dorr 1/4
 55.16
 1966-Poskie indicates corner in center USH 47 & CTH K, has 1 1/2"
 steel shaft S 42-47 W 136.0 from corner
 1973-Hess indicates corner in road measures West 2442 to lake.
 1975-L. Schmit found pipe in road.
 1978-L. Schmit found P.K. in road.

(c) (d) (e) Plan view of corner with ties to at least 4 witness monuments. If in disagreement with previously established corner, show the distances between the two corners and also indicate the ties to the disputed corner.



NOTE: BEARINGS REF. TO D.O.T. TIE SHEET DATED 08/04/88. NO SCALE.

(i) I, William E. Bandow
 (type or print name) certify that the corner location on this record was determined by me or under my direction and control and that this U.S. Public Land Survey Monument Record is correct and complete to the best of my knowledge and belief.

William E. Bandow Signature 1-5-94 Date



Index No. Z-21

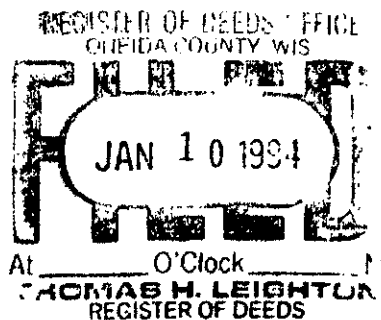
Stamp: 3708350000

1986-Romportl found P.K. in road which checked with Poskie's
1½" steel shaft.

1988-DOT sets concrete monuments to witness found P.K. nail
N 60 E 99.21, N 48-56 W 94.59, S 60 W 144.84,
S 48-56 E 131.33

1989-W.E. Bandow found P.K. in road measures West to MC 2443.98.

1993-W.E. Bandow reset P.K. nail from DOT references and
witnessed as shown.



U.S. PUBLIC LAND SURVEY MONUMENT RECORD

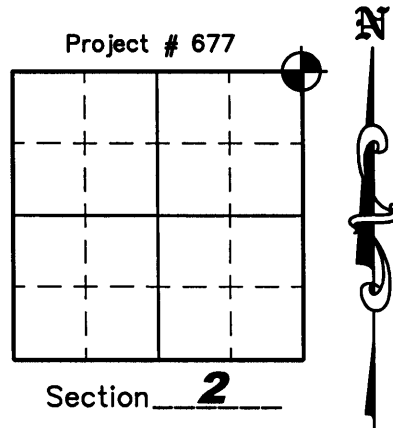
NOTE: This form is intended and designed to fulfill all requirements of Wisconsin Administrative Code, Chapter A-E 7 .08 U.S. Public Land Survey Monument Record (3)(a)(b)(c)(d)(e)(f)(g)(h)(i). An additional sheet may be added if necessary to conform with said requirements.

(a) Corner location: Township 36 North

Range 8 East

Town of Crescent

County of Oneida



(b)(f)(g)(h) Description of monument found at this corner and if it was accepted, state all evidence (material, testimonial, occupation, plats, records, other monuments) used as a basis for accepting. If not accepted or if nothing was found, state evidence used as a basis for establishing location. If reestablished through lost corner proportionate methods, indicate all monuments, distances and directions used to establish. Indicate type of monument found or set and sign post.

1860 - Alfred Millard established original corner at 80 Chains
B.T.'s White Pine 8" N 47° W 12 links, Maple 7" N 33° E 19 links, Aspen 10" S 75° E 11 links,
White Pine 8" S 82° W 21 links

1890 - BF Door recovers corner, measures West 37.03 chains to Lake.

1897 - BF Door recovers corner, measures East 39.85 chains to 1/4 Corner.

1917 - DH Vaughn sets iron monument in fill of new road.

1934 - Hal Craig GLO surveyor at a point in the center of Hwy "8" and on line with fence South, approximate corner, measures West 37.00 chains to Lake.

1939 - Maine at Corner in Center of U.S. Hwy "8" run South to Dorr 1/4 Corner 55.16 chains.

1966 - Poskie indicates corner in center U.S.H. "47" and C.T.H. "K", has 1-1/2" steel shaft S 42°47' W 136.0' from corner.

1973- Hess indicates corner in road, measures West 2442 to Lake.

1975 - L. Schmit found pipe in road.

1978 - L. Schmit found P.K. in road.

1986- Mike Romportl found P.K. in road which checked with Poskie's 1-1/2" Steel Shaft.

1988 - DOT sets concrete monuments to Witness found P.K. nail; N 60° E 99.21', N 48°56' W 94.59', S 60°W 144.84', S 48°56' E 131.33'.

1989 - William E. Bandow found P.K. nail in road, measures West to M.C. 2443.98'.

1993 - William E. Bandow reset P.K. nail from DOT references and set 1 new witness corner; 1" iron pipe N 48°56' W 107.71'.

4/6/1995 - Russell F. Brown found P.K. nail in road (See Oneida County Map Number C1139).

3/31/1997 - William E. Bandow found P.K. nail in road (See Oneida County Map Number B3616).

9/15/1999 - Dennis Roberts found P.K. nail in road (See C.S.M. Number 2291).

6/4/2001 - Russell F. Brown Found P.K. nail in road (See Oneida County Map Number B4775).

11/10/2005 - Matthew E. Hoglund went to corner and the P.K. nail and all 4 witness monuments were gone. We Reestablished the corner from an existing survey at the intersection of County Highway "K" and State Highway "47" by Russell F. Brown dated 6/4/2001, Oneida County Land Information Map Number B-4775. We also checked the survey across the street done by Russell F. Brown dated 4/6/1995, Oneida County Land Information Map Number C-1139 and came up with the same location. We set a P.K. Nail and witnessed the corner as shown on sheet 2 hereof.

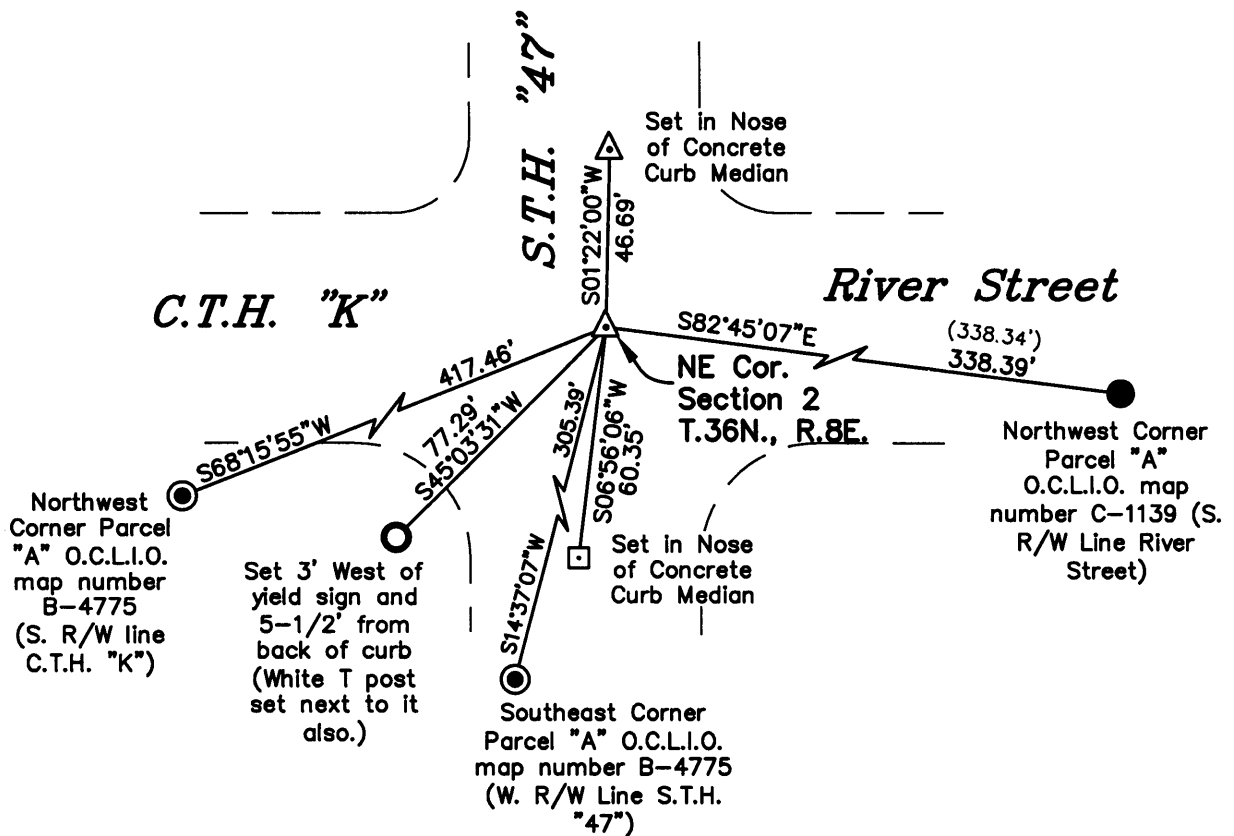
N-2

U.S. PUBLIC LAND SURVEY MONUMENT RECORD

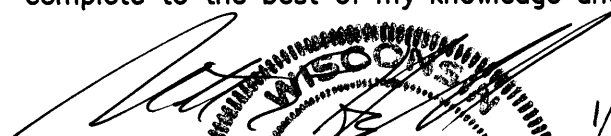
(c)(d)(e) Plan view of corner with ties to at least 4 witness monuments. If in disagreement with previously established corner, show the distances between the two corners and also indicate the ties to the disputed corner.

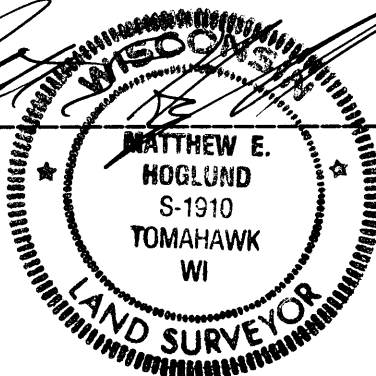
LEGEND

- △ P.K. Nail set
- 60p Nail set
- 3/4" x 24" Iron rebar capped set
- 1" Iron pipe found
- 3/4" Iron rebar found

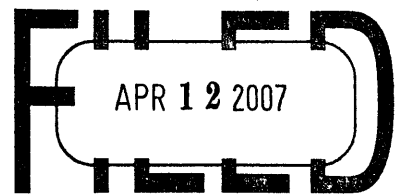


(i) I, Matthew E. Hoglund, certify that the corner location on this record was determined by me under my direction and control and that this U.S. Public Land Survey Monument is correct and complete to the best of my knowledge and belief.

Signature  Date 1/6/06



REGISTER OF DEEDS OFFICE
ONEIDA COUNTY, WIS.



At _____ O'Clock _____ M
THOMAS H. LEIGHTON
REGISTER OF DEEDS

Proj. # 677

3708350000

Sheet 2 of 2

12-N

U.S. PUBLIC LAND SURVEY MONUMENT RECORD

REGISTER OF DEEDS OFFICE
ONEIDA COUNTY
FILED

Note: This form is intended and designed to fulfill all requirements of the Wisconsin Administrative Code, Chapter A-E 7.08 U.S. Public Land Monument Record (3)(a)(b)(c)(d)(e)(f)(g)(h)(i). An additional sheet may be added if necessary to conform with said requirements.

DEC 12 2017

AT _____ O'CLOCK _____ M
KYLE J. FRANSON
REGISTER OF DEEDS

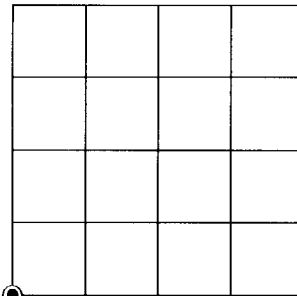
(a) CORNER LOCATION:

Southwest Corner of Section 36
Township 37 North
Range 8 East
Town of Newbold
County of Oneida

North:
East:
Datum:
GNSS Method:
GNSS Control:

(RECORDING AREA)

SECTION 36



(b) HISTORY OF ORIGINAL CORNER ESTABLISHMENT

Original Surveyor:
Date of Survey: Commenced _____
Completed _____
Original B.T.'S _____

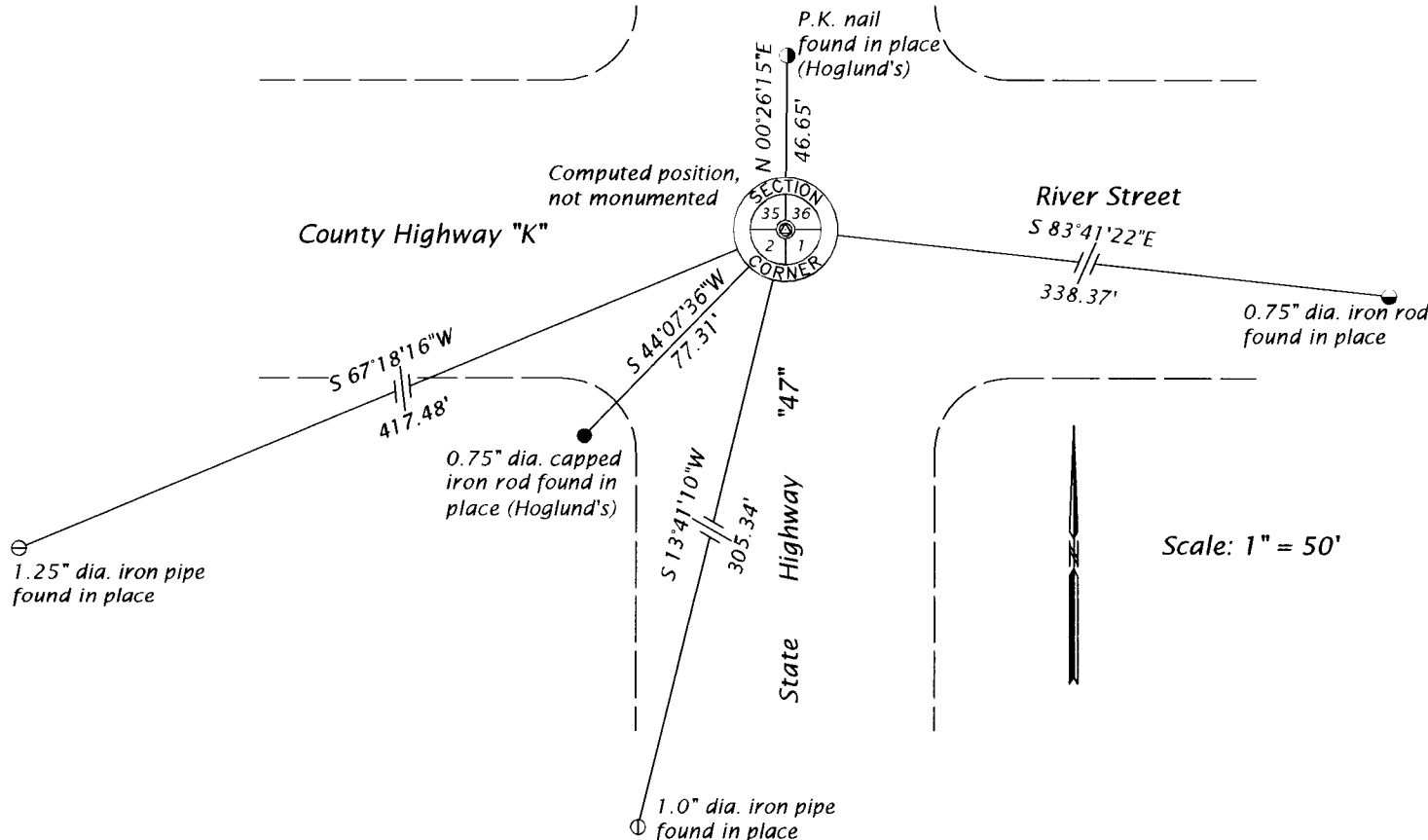
SEE PREVIOUS U.S.P.L.S. MONUMENT RECORD DATED JANUARY 6, 2006.

(f)(g)(h) DESCRIPTION OF MONUMENT FOUND AT THIS CORNER AND IF IT WAS ACCEPTED, STATE ALL EVIDENCE (MATERIAL, TESTIMONIAL, OCCUPATIONAL, PLATS, RECORD, OTHER MONUMENTS) USED AS A BASIS FOR ESTABLISHING LOCATION. IF NOT ACCEPTED OR IF NOTHING WAS FOUND, STATE EVIDENCE USED AS BASIS FOR ESTABLISHING LOCATION. IF REESTABLISHED THROUGH LOST CORNER PROPORTIONATE METHODS, INDICATE ALL MONUMENTS, DISTANCES AND DIRECTIONS USED TO ESTABLISH. INDICATE TYPE OF MONUMENT AND SIGN POST FOUND OR SET.

This is a perpetuation of a previous U.S.P.L.S. Monument Record by Matthew E. Hoglund, RLS, dated January 6, 2006, and filed in the office of the Oneida County Register of Deeds. A complete history of the corner can be found on the previous monument record. I accept the previous location as a true and faithful perpetuation or reestablishment of the original corner location and further perpetuate it as follows.

November 7, 2017, James D. Rein, P.L.S. No. S-1234, due to highway resurfacing, did not find the P.K. nail set by Hoglund in 2006. We repositioned the corner using existing witnesses. Due to vehicular traffic, we did not reset the corner in the highways - see below for updated ties.

(c)(d)(e) PLAN VIEW OF CORNER WITH TIES TO AT LEAST 4 WITNESS MONUMENTS. IF IN DISAGREEMENT WITH PREVIOUSLY ESTABLISHED CORNER, SHOW THE DISTANCE BETWEEN THE TWO CORNERS AND ALSO INDICATE THE TIES TO THE DISPUTED CORNER.



(i) I, JAMES D. REIN, PROFESSIONAL LAND SURVEYOR NO. S-1234 HEREBY CERTIFY THAT THE CORNER LOCATION ON THIS RECORD WAS DETERMINED BY ME OR UNDER MY DIRECTION AND CONTROL AND THAT THIS U.S. PUBLIC LAND SURVEY MONUMENT RECORD IS CORRECT AND COMPLETE TO THE BEST OF MY KNOWLEDGE AND BELIEF.

[Handwritten Signature]
SIGNATURE

12-07-17
DATE



INDEX NO. Z-21
3708350000

JUN 12 2023

KYLE J. FRANSON
REGISTER OF DEEDS

U.S. PUBLIC LAND SURVEY MONUMENT RECORD

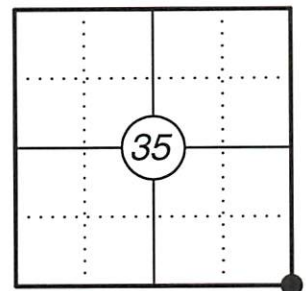
This form is intended and designed to fulfill all requirements of Wisconsin Administrative Code, Chapter A-E 7.08 U.S. Public Land Survey Monument Record (3) (a)(b)(c)(d)(e)(f)(g)(h)(i). An additional sheet may be added if necessary to confirm with said requirements.

The coordinate value shown has been verified by at least one of the following methods: 1) Comparison to a previously GNSS determined published value; 2) The value is the average of two or more GNSS observations at a markedly different time; 3) one or more distances were measured back to the GNSS observed corner from temporary GNSS observed offset locations.

(a) Corner Location:

SE Corner Section 35	WISCRS - Oneida County
Township 37 North	N: 167368.50
Range 8 East	E: 253968.47
Town of Newbold	Datum: NAD 83 (2011)
County of Oneida	GNSS Method: RTK Direct
	GNSS Control: WISCRS VRS

Corner ID: 3708350000



(b) History of Original Corner:

Original Surveyor: Alfred Millard	Original B.T.'s: 8" White Pine - N 47° W, 12 Links
Date of Survey: 1860	7" Maple - N 33° E, 19 Links
	10" Aspen - S 75° E, 11 Links
	8" White Pine - S 82° W, 21 Links

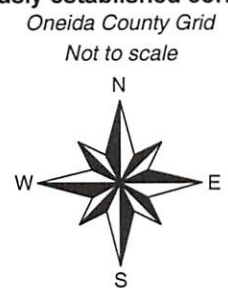
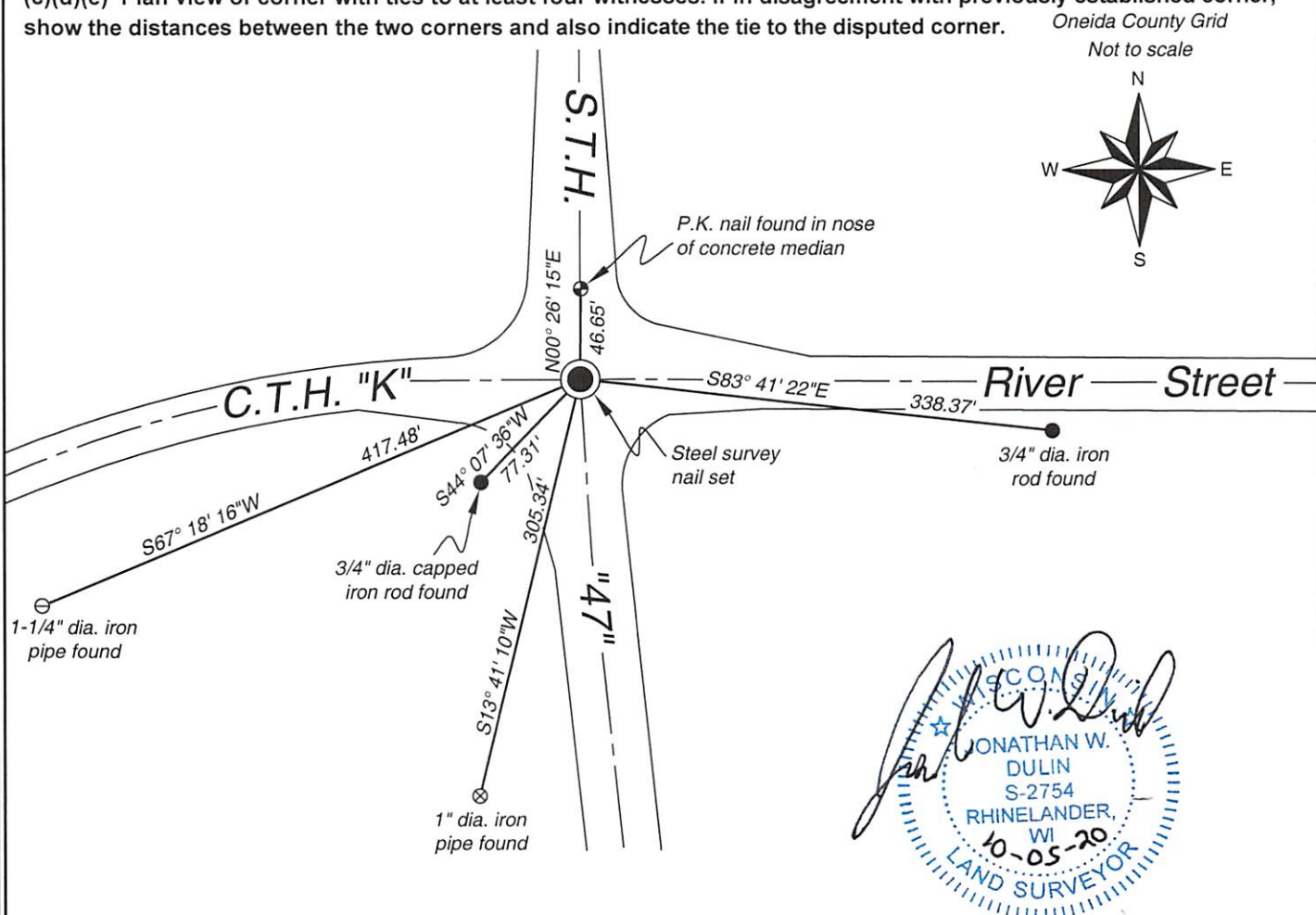
(f)(g)(h) Description of monument found at this corner and if it was accepted, state all evidence (material, testimonial, occupational, plats, records, other monuments) used as a basis for establishing location. If reestablishing through lost corner proportionate methods, indicate all monuments, distances, and directions used to establish. Indicate type of monument and sign post found or set.

For corner history, see previous U.S. Public Land Survey Monument Records by: James D. Rein, dated December 7, 2017; Matthew E. Hoglund, dated January 6, 2006 and William E. Bandow, dated January 5, 1994.

07/23/2020 - Prior to road reconstruction on State Highway "47", I searched and found no monument at the corner location. I did find all five reference monuments from 2017 as shown below. (Note: The U.S. Public Land Survey Monument Record from 2017 shows a computed position, no monument at the corner location).

09/28/2020 - After the road construction was complete, I positioned the corner using the five reference monuments and set a steel survey nail at the corner location near the intersection of the centerlines of State Highway "47" and County Highway "K" as shown below.

(c)(d)(e) Plan view of corner with ties to at least four witnesses. If in disagreement with previously established corner, show the distances between the two corners and also indicate the tie to the disputed corner.



Jonathan W. Dulin
 JONATHAN W. DULIN
 S-2754
 RHINELANDER, WI
 10-05-20
 LAND SURVEYOR

Certification

I, Jonathan W. Dulin, Professional Land Surveyor No. 2754, hereby certify that the corner location on this record was referenced by me or under my direction and control and that this U.S. Public Land Survey Monument Record is complete to the best of my knowledge and belief.

Index No.: 2-21