

U.S. PUBLIC LAND SURVEY MONUMENT RECORD

REGISTER OF DEEDS OFFICE
ONEIDA COUNTY
FILED

Note: This form is intended and designed to fulfill all requirements of the Wisconsin Administrative Code, Chapter A-E 7.08 U.S. Public Land Monument Record (3)(a)(b)(c)(d)(e)(f)(g)(h)(i). An additional sheet may be added if necessary to conform with said requirements.

NOV 26 2018

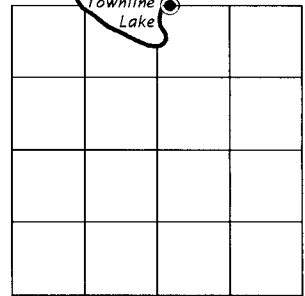
KYLE J. FRANSON
REGISTER OF DEEDS

(a) CORNER LOCATION:

East Meander Corner north line of Section 2 North:
Township 36 North East:
Range 8 East Datum:
Town of Crescent GNSS Method:
County of Oneida GNSS Control:

(RECORDING AREA)

SECTION 2



(b) HISTORY OF ORIGINAL CORNER ESTABLISHMENT

Original Surveyor: Alfred Millard
Date of Survey: Commenced August, 1860
Completed September, 1860
Original B.T.'S: Y. Pine, 16", S 13°E, 35 lks
Y. Pine, 14", N 52°E, 21 lks

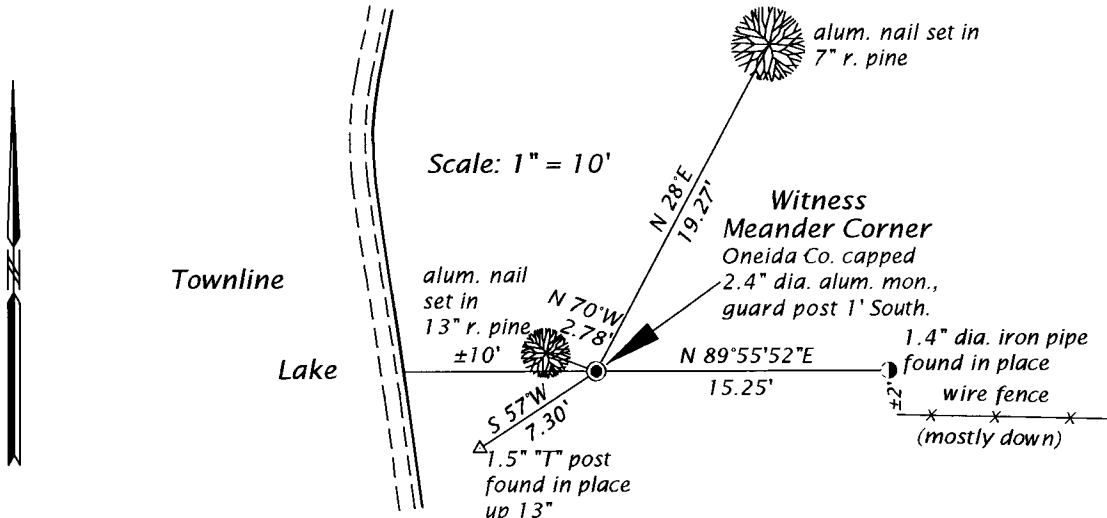
(f)(g)(h) DESCRIPTION OF MONUMENT FOUND AT THIS CORNER AND IF IT WAS ACCEPTED, STATE ALL EVIDENCE (MATERIAL, TESTIMONIAL, OCCUPATIONAL, PLATS, RECORD, OTHER MONUMENTS) USED AS A BASIS FOR ESTABLISHING LOCATION. IF NOT ACCEPTED OR IF NOTHING WAS FOUND, STATE EVIDENCE USED AS BASIS FOR ESTABLISHING LOCATION. IF REESTABLISHED THROUGH LOST CORNER PROPORTIONATE METHODS, INDICATE ALL MONUMENTS, DISTANCES AND DIRECTIONS USED TO ESTABLISH. INDICATE TYPE OF MONUMENT AND SIGN POST FOUND OR SET.

September 28, 1935 - GLO Dependent Resurvey and Extension Survey in Section 2, Township 36 North, R8E, 4th PM, Hal D. Craig, U.S. Surveyor, record does not show evidence of a recovered corner.

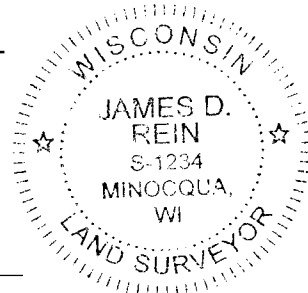
November 1, 1989 - William E. Bandow, RLS No. 1182 - Map 7990, for a survey in SE ¼ of the SE ¼, and Government Lot 1, T35N, R8E, filed as C2083 in the Oneida County Surveyor's Office, describes the meander corner monumented by a "set 1" dia. x 24" iron pipe" and referenced by a WC "Set Oneida County Monument bearing S 89°07'51"E, 14.35 feet.

January 30, 2018 - James D. Rein, PLS No. 1234 - We recovered an Oneida County capped 2.4" diameter aluminum witness monument, extending 6" above ground level, stamped "35-37-8, WIT MC, 2-36-8". We do not recover the iron pipe, the position of which is now in Townline Lake. Based on Bandows map, it appears the meander corner was re-established by extending a line west from the section corner through a recovered E 1/16 corner. This corner position is fairly harmonious with old fence evidence, and it has been accepted by subsequent surveys including Certified Survey Map #2291 and P.O.S. Number C2277. I also accept this monument as being the best available remaining evidence for this meander corner.

(c)(d)(e) PLAN VIEW OF CORNER WITH TIES TO AT LEAST 4 WITNESS MONUMENTS. IF IN DISAGREEMENT WITH PREVIOUSLY ESTABLISHED CORNER, SHOW THE DISTANCE BETWEEN THE TWO CORNERS AND ALSO INDICATE THE TIES TO THE DISPUTED CORNER.



(i) I, JAMES D. REIN, PROFESSIONAL LAND SURVEYOR NO. S-1234 HEREBY CERTIFY THAT THE CORNER LOCATION ON THIS RECORD WAS DETERMINED BY ME OR UNDER MY DIRECTION AND CONTROL AND THAT THIS U.S. PUBLIC LAND SURVEY MONUMENT RECORD IS CORRECT AND COMPLETE TO THE BEST OF MY KNOWLEDGE AND BELIEF.



James D. Rein
SIGNATURE

11-15-18
DATE

INDEX NO. A 19-20
3708350018

