

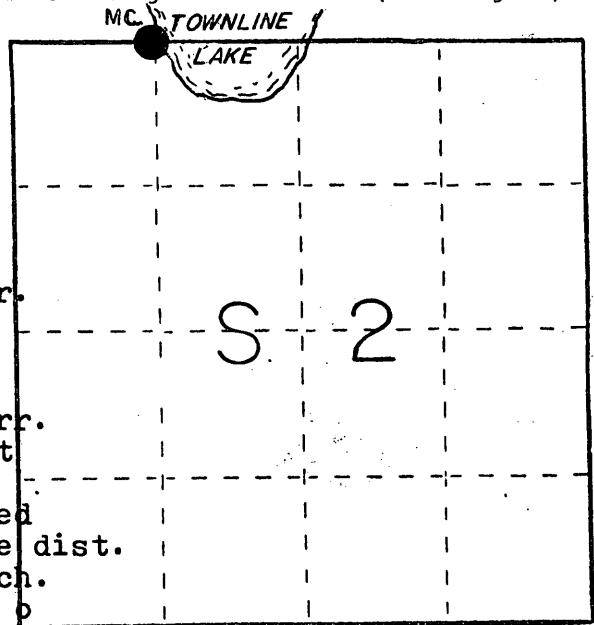
U. S. PUBLIC LAND SURVEY MONUMENT RECORD

INSTRUCTIONS: This record shall show the location of the corner and shall include all of the following nine elements (a through i).

(a) Identify the corner by reference to the U.S. public land survey system.

● = Corner monument restored.

**M.C. ON WEST SIDE TOWNLINE LAKE,
SECTION 2, TOWNSHIP 36 NORTH,
RANGE 8 EAST, ONEIDA COUNTY, WIS.**

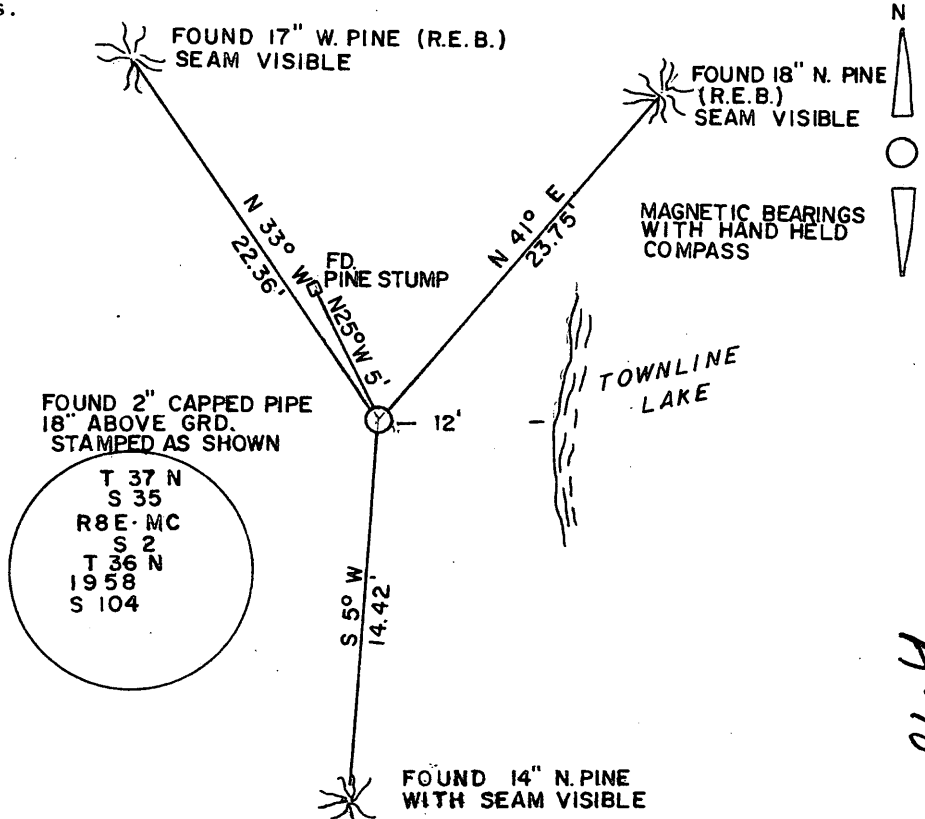


- Sept. 3 1860 Alfred Millard set orig. cor. 21.75 ch. east of NW cor. B.T.s Y.Pine 16 N32W 8; Y Pine 7 S10W 20
 - Jan 28, 1896 @ NW cor. measured east to M.C. on west side of lake 21.64 1/2 B.F. Dorr.
 - D.H. Vaughan Jan. 5 1916 states M.C. east of NW cor. orig. trees ok
 - June 1934 the General Land Office executed a resurvey of part of Sec. 2 and found the dist. from the NW cor. to the M.C. to be 21.67 ch. states that the M.C. was determined from orig. B.T.s
 - March 1960 Robert E. Bandow surveying for the Dept. Of Agriculture, U.S. Forest Service set a 2"x5' iron pipe with bronze cap. Found old B.T.s 16" Pine stump N 24-30 W 5.0'; 13" N. Pine S5W 14.0'; New 17" W. Pine N 33-30W 22.5' con't
- (b) Describe any record evidence, monument evidence, occupational evidence, testimonial evidence or any other material evidence you considered, and whether the monument was found or placed.
- 18" N. Pine N 40-30 E 23.8'. Dist to NW cor. 1433.61'

At this corner I found the 2" capped iron pipe in good condition and Bandows B.T.s as shown below.

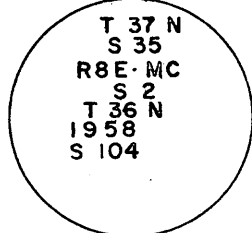
(c) In the plan view drawing below, provide reference ties to at least 4 witness monuments, or, if the location is within a municipality, to at least 2 witness monuments. (Witness monuments shall be made of concrete, natural stone, iron or other equally durable material.) Describe witness monuments.

(d) Show a plan view drawing depicting the relevant monuments and reference ties which is sufficient in detail to enable accurate relocation of the corner monument if the corner monument is disturbed. Indicate north.



- DISTANCES ARE MEASURED TO IRON NAILS IN APPROX. CENTER OF TREES

Compared with all record data and accepted as correct.



Robert H. Winat, Oneida Co. Surv.
9 November 1983

(e) Describe any material discrepancy between the location of the corner as restored or reestablished and the location of that corner as previously restored or reestablished by distance and direction. Show the discrepancy on the plan view drawing under (d), above. Show the distances between the corner as previously restored or reestablished and (1) the corner as restored or reestablished, and (2) to at least 2 of the witness monuments shown on the drawing in (d), above.

Found none

(f) Was the corner restored through acceptance of (1) an obliterated evidence location, or, (2) a found perpetuated location?
a found perpetuated location

(g&h) Was the corner reestablished through lost corner proportionate methods? If so, show the method, including the directions and distances to other public land survey corners used as evidence or used for proportioning in determining the corner location?

N/a

REGISTER OF DEEDS OFFICE
ONEIDA COUNTY, WIS.

FILED
JUN 11 1986

At 2:01 P.M. O'Clock
CHRIS VERAGE KUEHN
REGISTER OF DEEDS



(1) Michael J. Romportl

(type or print name) certify that the corner location shown on this record was determined by me or under my direction and control and that this U.S. Public Land Survey Monument Record is correct and complete to the best of my knowledge and belief.

Michael J. Romportl 9-19-83
Signature Date
Michael J. Romportl R.L.S. 1624
Genisot & Associates Inc. Rhinelander, Wis.

U.S. PUBLIC LAND SURVEY MONUMENT RECORD

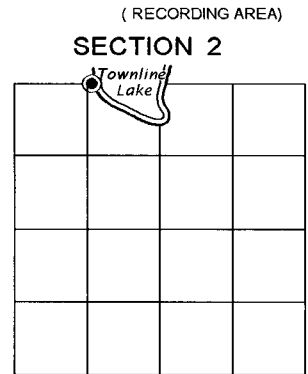
REGISTER OF DEEDS OFFICE
ONEIDA COUNTY
FILED

NOV 26 2018

KYLE J. FRANSON
REGISTER OF DEEDS

(a) CORNER LOCATION:

West Meander Corner north line of Section 2 North:
Township 36 North East:
Range 8 East Datum:
Town of Crescent GNSS Method:
County of Oneida GNSS Control:



(b) HISTORY OF ORIGINAL CORNER ESTABLISHMENT

Original Surveyor:
Date of Survey:

Original B.T.'S:

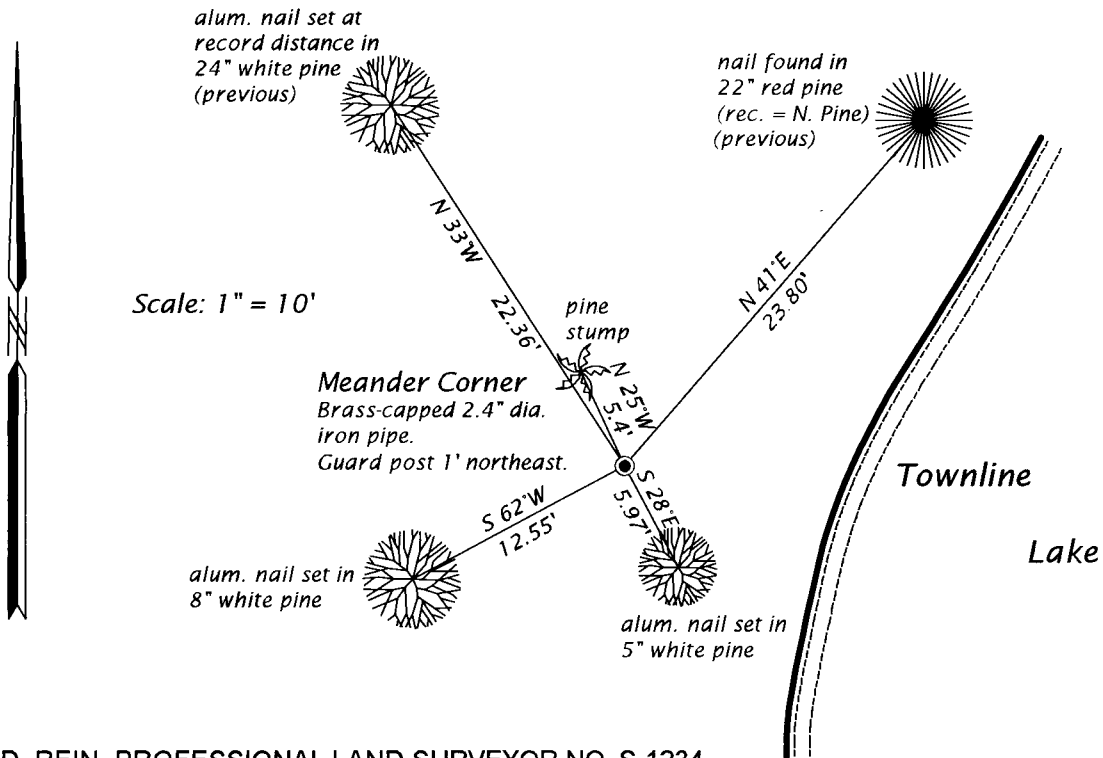
SEE PREVIOUS U.S.P.L.S. MONUMENT RECORD DATED SEPTEMBER 19, 1983.

(f)(g)(h) DESCRIPTION OF MONUMENT FOUND AT THIS CORNER AND IF IT WAS ACCEPTED, STATE ALL EVIDENCE (MATERIAL, TESTIMONIAL, OCCUPATIONAL, PLATS, RECORD, OTHER MONUMENTS) USED AS A BASIS FOR ESTABLISHING LOCATION. IF NOT ACCEPTED OR IF NOTHING WAS FOUND, STATE EVIDENCE USED AS BASIS FOR ESTABLISHING LOCATION. IF REESTABLISHED THROUGH LOST CORNER PROPORTIONATE METHODS, INDICATE ALL MONUMENTS, DISTANCES AND DIRECTIONS USED TO ESTABLISH. INDICATE TYPE OF MONUMENT AND SIGN POST FOUND OR SET.

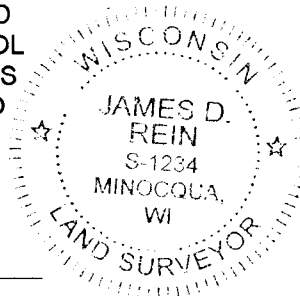
This is a perpetuation of a previous U.S.P.L.S. Monument Record by Michael J. Romportl, RLS, dated September 19, 1983, and filed in the office of the Oneida County Register of Deeds. A complete history of the corner can be found on the previous monument record. I accept the previous location as a true and faithful perpetuation or reestablishment of the original corner location and further perpetuate it as follows.

March 30, 2018, I, James D. Rein, P.L.S. No. S-1234, found and accepted the brass-capped 2.4" (o.d.) iron pipe shown on the previous monument record by Romportl. Romportl's southwesterly pine bearing tree is now gone - see below for updated witnesses.

(c)(d)(e) PLAN VIEW OF CORNER WITH TIES TO AT LEAST 4 WITNESS MONUMENTS. IF IN DISAGREEMENT WITH PREVIOUSLY ESTABLISHED CORNER, SHOW THE DISTANCE BETWEEN THE TWO CORNERS AND ALSO INDICATE THE TIES TO THE DISPUTED CORNER.



(i) I, JAMES D. REIN, PROFESSIONAL LAND SURVEYOR NO. S-1234 HEREBY CERTIFY THAT THE CORNER LOCATION ON THIS RECORD WAS DETERMINED BY ME OR UNDER MY DIRECTION AND CONTROL AND THAT THIS U.S. PUBLIC LAND SURVEY MONUMENT RECORD IS CORRECT AND COMPLETE TO THE BEST OF MY KNOWLEDGE AND



James D. Rein
SIGNATURE
11-15-18
DATE

INDEX NO. A ~~18-19~~
3708350029