

JUN 12 2023

KYLE J. FRANSON
REGISTER OF DEEDS

U.S. PUBLIC LAND SURVEY MONUMENT RECORD

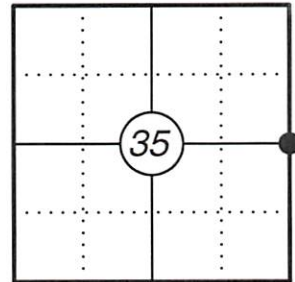
This form is intended and designed to fulfill all requirements of Wisconsin Administrative Code, Chapter A-E 7.08 U.S. Public Land Survey Monument Record (3) (a)(b)(c)(d)(e)(f)(g)(h)(i). An additional sheet may be added if necessary to confirm with said requirements.

The coordinate value shown has been verified by at least one of the following methods: 1) Comparison to a previously GNSS determined published value; 2) The value is the average of two or more GNSS observations at a markedly different time; 3) one or more distances were measured back to the GNSS observed corner from temporary GNSS observed offset locations.

(a) Corner Location:

E 1/4 Corner Section 35	WISCRS - Oneida County
Township 37 North	N: 170040.20
Range 8 East	E: 254007.79
Town of Newbold	Datum: NAD 83 (2011)
County of Oneida	GNSS Method: RTK Direct
	GNSS Control: WISCORS VRS

Corner ID: 3708352000



(b) History of Original Corner:

Original Surveyor: W.E. Daughterty	Original B.T.'s: 12" White Pine - N 61° E, 14 Links
Date of Survey: 1863	10" Yellow Pine - S 44° W, 8 Links

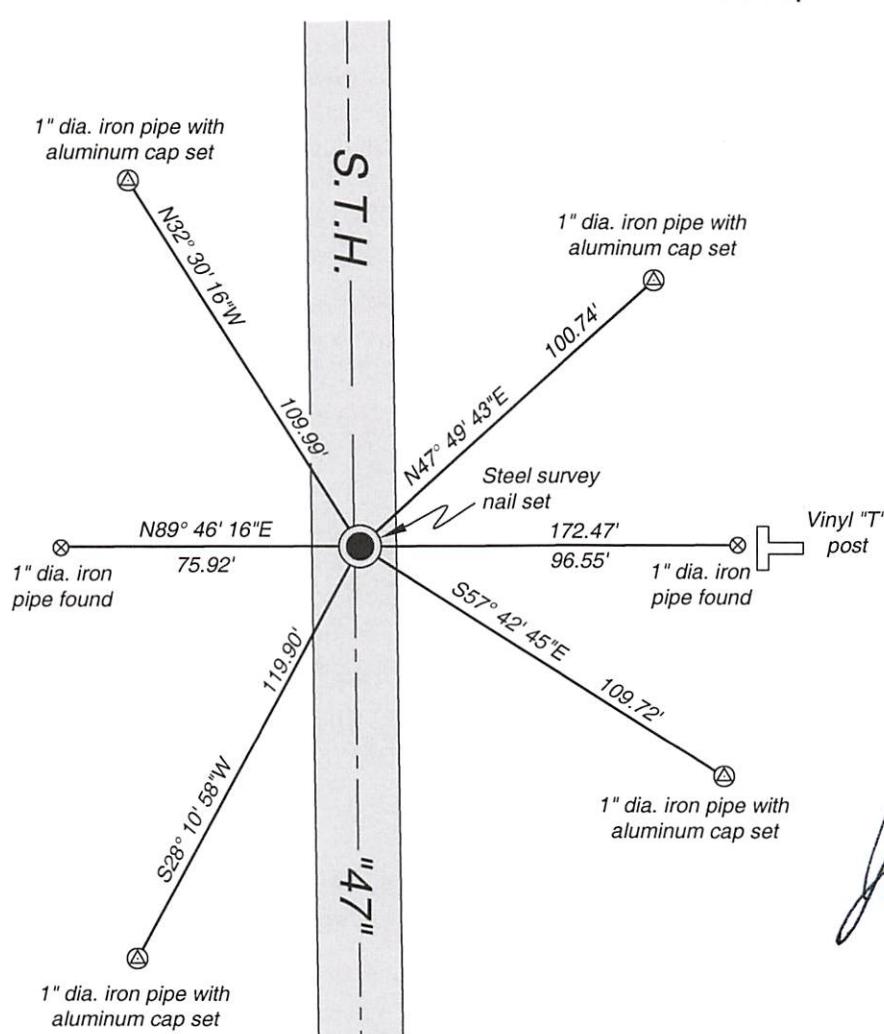
(f)(g)(h) Description of monument found at this corner and if it was accepted, state all evidence (material, testimonial, occupational, plats, records, other monuments) used as a basis for establishing location. If reestablishing through lost corner proportionate methods, indicate all monuments, distances, and directions used to establish. Indicate type of monument and sign post found or set.

For corner history, see previous U.S. Public Land Survey Monument Record by Michael J. Romportl, dated March 30, 1987.

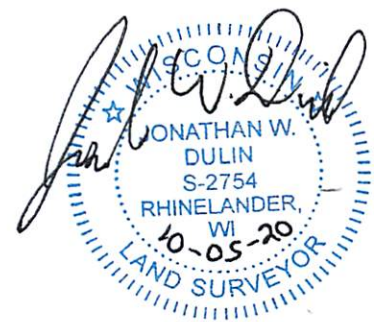
07/23/2020 - Prior to the road construction on State Highway "47", I found and accepted a "PK" nail approximately 3.5 feet east of the centerline of State Highway "47" along with two reference monuments from 1987 as shown below.

09/28/2020 - After the road construction was complete I set a steel survey nail at the corner location and set four aluminum capped 1" dia. iron pipes to witness the corner as shown below.

(c)(d)(e) Plan view of corner with ties to at least four witnesses. If in disagreement with previously established corner, show the distances between the two corners and also indicate the tie to the disputed corner.



Oneida County Grid
Not to scale



Certification
I, Jonathan W. Dulin, Professional Land Surveyor No. 2754, hereby certify that the corner location on this record was referenced by me or under my direction and control and that this U.S. Public Land Survey Monument Record is complete to the best of my knowledge and belief.

Index No.: X-21