

# U.S. PUBLIC LAND SURVEY MONUMENT RECORD

Note: This form is intended and designed to fulfill all requirements of Wisconsin Administrative Code, Chapter A-E 7.08 U.S. Public Land Survey Monument Record (3) (a) (b) (c) (d) (e) (f) (g) (h) (i). An additional sheet may be added if necessary to conform with said requirements.

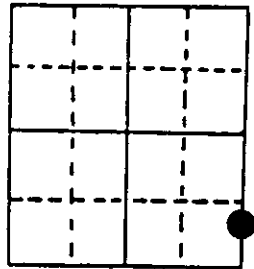
(a) Corner location: Township 37 North

Range 8 East/West

Town/City/Village Pine Lake

County Oneida

REGISTER OF DEEDS OFFICE  
ONEIDA COUNTY, WIS.  
**FILED**  
MAY 30 1991  
At \_\_\_\_\_ O'Clock \_\_\_\_\_ M  
**THOMAS H. LEIGHTON**  
REGISTER OF DEEDS



Section 36

(b) (f) (g) (h) Description of monument found at this corner and if it was accepted, state all evidence (material, testimonial, occupational, plats, records, other monuments) used as a basis for accepting. If not accepted or if nothing was found, state evidence used as basis for establishing location. If reestablished through lost corner proportionate methods, indicate all monuments, distances and directions used to establish. Indicate type of monument found or set and sign post.

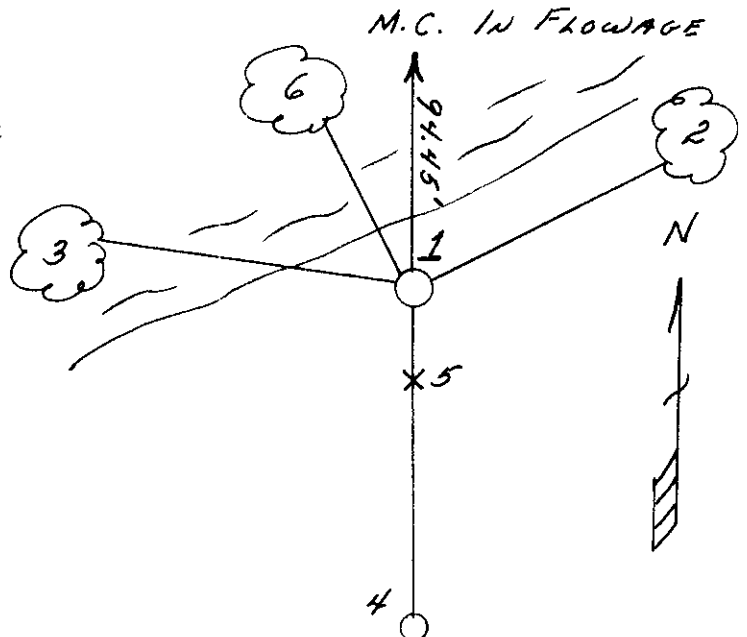
Sept. 1860 - H. C. Fellows established this corner at 12.00 chains north of the Township Corner, set a wood post with BTs:  
7" Willow, N10°W, 12 Links                      7" Elm, S38°E, 13 Links

2/14/1991 - Milo E. Stefan in survey of range line from Quarter Corner northerly to Township Corner southerly, finds the Meander Corner by Fellows now falls in the flowage created by the dam on the Wisconsin River, now known as Boom Lake. We, therefore, established a Witness Corner Meander Corner on the south shore of Boom Lake that witnesses the proportioned position of the original Meander Corner. See drawing on back of this sheet.

(c) (d) (e) Plan view of corner with ties to at least 4 witness monuments. If in disagreement with previously established corner, show the distances between the two corners and also indicate the ties to the disputed corner.

- 1) 2" x 36" Aluminum county monument
- 2) 3" White Birch, N45°E, 22.04 feet
- 3) 6" White Birch, N78°W, 32.76 feet
- 4) 1 1/2" Iron Pipe, South, 286.50 feet
- 5) Plastic sign post, South, 1.3'
- 6) 10" White Birch, N27°W, 10.77'

Distance to nail in side of BT.  
Stump blaze scribed, "BT".



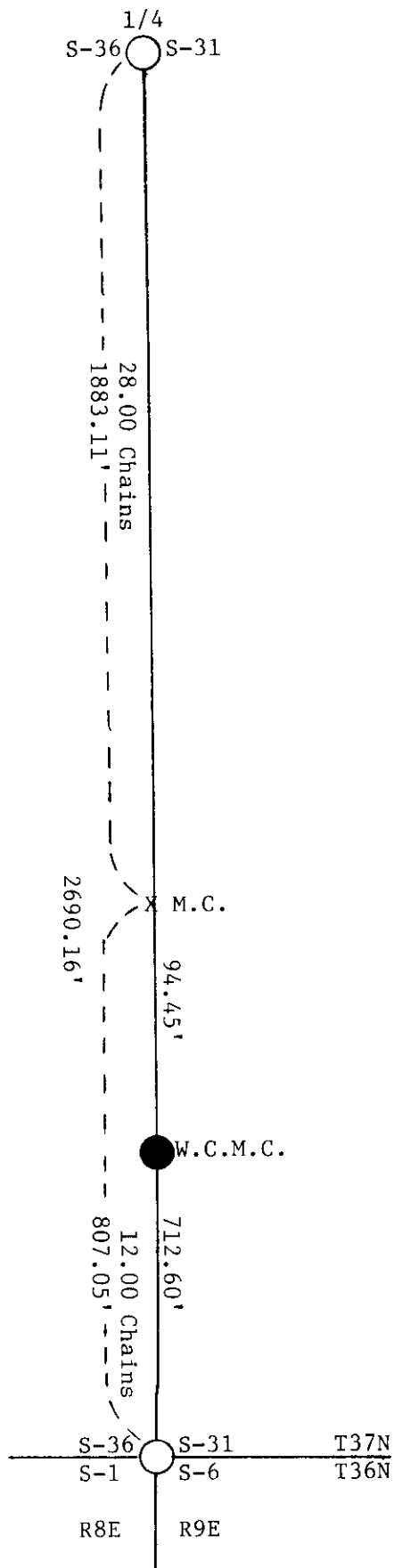
(i) I, Milo E. Stefan  
(type or print name) certify that the corner location on this record was determined by me or under my direction and control and that this U.S. Public Land Survey Monument Record is correct and complete to the best of my knowledge and belief.

Milo E. Stefan  
Signature

April 18, 1991  
Date



Stamp  
3708 31-01-00



GLO distances in chains  
Recent measure in feet

U.S. PUBLIC LAND SURVEY MONUMENT RECORD

REGISTER OF DEEDS OFFICE  
ONEIDA COUNTY  
FILED

FEB 22 2022

Note: This form is intended and designed to fulfill all requirements of the Wisconsin Administrative Code, Chapter A-E 7.08 U.S. Public Land Monument Record (3)(a)(b)(c)(d)(e)(f)(g)(h)(i). An additional sheet may be added if necessary to conform with said requirements.

KYLE J. FRANSON  
REGISTER OF DEEDS

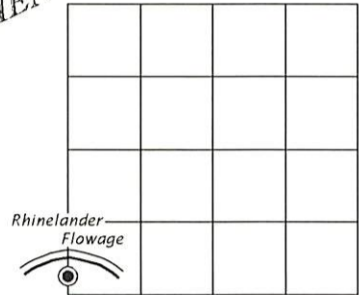
(a) CORNER LOCATION:

Witness Meander Corner of Section 31  
Township 37 North  
Range 9 East  
City of Rhinelander  
County of Oneida

North:  
East:  
Datum:  
GNSS Method:  
GNSS Control:

(RECORDING AREA)

SECTION 31



(b) HISTORY OF ORIGINAL CORNER ESTABLISHMENT

Original Surveyor:  
Date of Survey: Commenced  
Completed  
Original B.T.'S

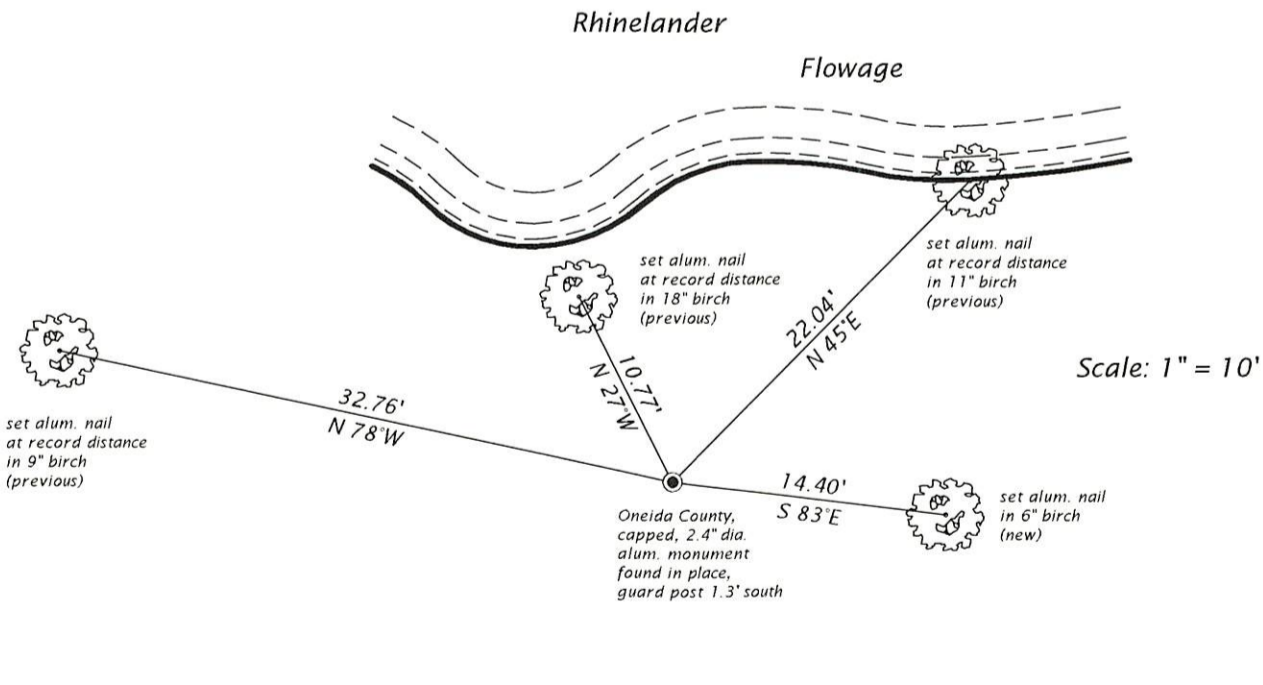
SEE PREVIOUS U.S.P.L.S. MONUMENT  
RECORD DATED APRIL 18, 1991

(f)(g)(h) DESCRIPTION OF MONUMENT FOUND AT THIS CORNER AND IF IT WAS ACCEPTED, STATE ALL EVIDENCE (MATERIAL, TESTIMONIAL, OCCUPATIONAL, PLATS, RECORD, OTHER MONUMENTS) USED AS A BASIS FOR ESTABLISHING LOCATION. IF NOT ACCEPTED OR IF NOTHING WAS FOUND, STATE EVIDENCE USED AS BASIS FOR ESTABLISHING LOCATION. IF REESTABLISHED THROUGH LOST CORNER PROPORTIONATE METHODS, INDICATE ALL MONUMENTS, DISTANCES AND DIRECTIONS USED TO ESTABLISH. INDICATE TYPE OF MONUMENT AND SIGN POST FOUND OR SET.

This is a perpetuation of a previous U.S.P.L.S. Monument Record by Milo E. Stefan, RLS, dated April 18, 1991, and filed in the office of the Oneida County Register of Deeds. A complete history of the corner can be found on the previous monument record. I accept the previous location as a true and faithful perpetuation or reestablishment of the original corner location and further perpetuate it as follows.

October 26, 2021, we found, and I accepted the Oneida County capped aluminum monument set by Stefan in 1991. The reference iron pipe 286.5' south of the corner shown on Stefan's monument record is now gone. See below for updated references.

(c)(d)(e) PLAN VIEW OF CORNER WITH TIES TO AT LEAST 4 WITNESS MONUMENTS. IF IN DISAGREEMENT WITH PREVIOUSLY ESTABLISHED CORNER, SHOW THE DISTANCE BETWEEN THE TWO CORNERS AND ALSO INDICATE THE TIES TO THE DISPUTED CORNER.



(i) I, JAMES D. REIN, PROFESSIONAL LAND SURVEYOR NO. S-1234 HEREBY CERTIFY THAT THE CORNER LOCATION ON THIS RECORD WAS DETERMINED BY ME OR UNDER MY DIRECTION AND CONTROL AND THAT THIS U.S. PUBLIC LAND SURVEY MONUMENT RECORD IS CORRECT AND COMPLETE TO THE BEST OF MY KNOWLEDGE AND BELIEF.



*James D. Rein*  
SIGNATURE

2-09-22  
DATE

INDEX NO. Y, Z - 25

3708360600