

CERTIFIED LAND CORNER RESTORATION

Index No. E-19

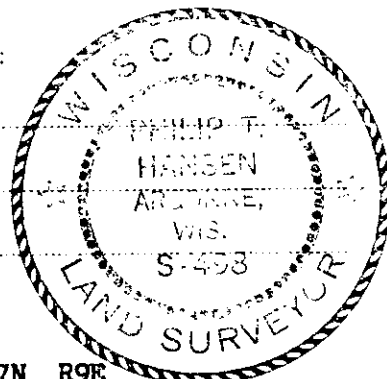
State of Wisconsin }
County of Oneida } ss.

I Philip T. Hansen, do hereby certify that on the 21st day of January, 1977, I found evidence of the Quarter corner of Section 2 & 11 Township 37, North, Range 9 East, Fourth Principal Meridian, as described hereon; and that from this evidence I established a new monument and accessories as described hereon to perpetuate the original location of this corner.

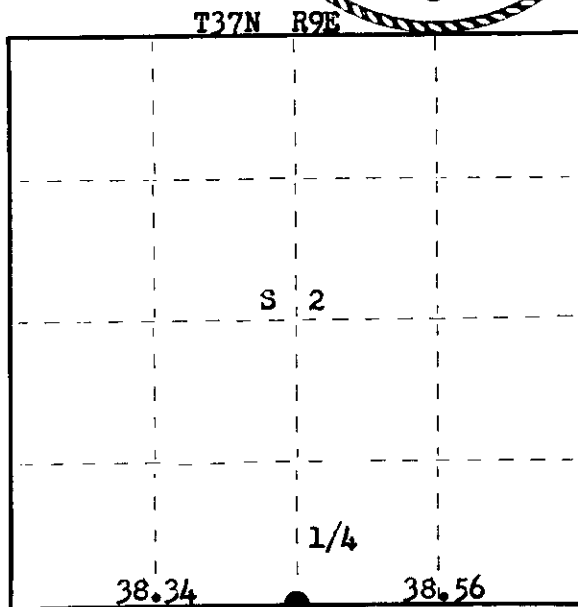
Resident witnesses:

Jim Claflin

Herb Wagoner



FORM 985 H. C. MILLER CO., MILWAUKEE



○ = Corner monument restored.

History of original corner establishment:

Original Corner established by Wm. E. Dougherty, Deputy Surveyor, in 1863, from which Maple 10" bears S 19° E 24 links and Birch 10" bears N 55° W 19 links. N. Loftus, Ripco Surveyor, re-established corner in 1956. Ran random line N 85° E from Section Corner 2, 3, 10 and 11, 76.90 $\frac{1}{2}$ chains. Recovered Dorr's BT at W 1/16 corner. Set 1/4 corner at 38.34 chains, Dorr's chainage in 1894. Marked NBTs - Pine 15" S 63° E 40 links; Pine 12" S 35° E 39 links. Set iron pipe with brass cap.

Description of corner evidence found:

Recovered 2 $\frac{1}{2}$ " iron pipe with 4" brass cap in good condition and firmly in ground.
Recovered Red Pine 15" S 63° E (S 56° E) 40 links (41.0 links).
Red Pine 18" S 2° W 40.2 links, scribing not legible.
Monument projects 18" above ground. Cap stamped:

T37N R9E
1/4 S $\frac{S}{S}$ $\frac{2}{11}$
RIPCO

Description of monument and accessories I established to perpetuate the original location of this corner.

Monument as recovered was left in place.
NBT - Red Pine 8" S 64° W 21.3 links, scribed 1/4 BT.

Dated at Rhineland, Wis., this 25th day of February, 1977

Signature Philip T. Hansen Title Registered Land Surveyor Registration No. S-498
(County Surveyor, Registered Land Surveyor, or other duly authorized official)

Office of Register of Deeds, County of Oneida, I hereby certify that the within instrument was filed in this office for record on the 23rd day of March, 1977 at 3:00 o'clock P. M.

Doris Verage Kuehn
(Register of Deeds)

By _____ Deputy

3709020020

U S PUBLIC LAND SURVEY MONUMENT RECORD

NOTE: This form is intended and designed to fulfill all requirements of Wisconsin Administrative Code, Chapter A-E 7.08 U.S. Public Land Survey Monument Record (3) (a-i)

A-E 7.08(3)(a) Identity of corner
 SOUTH 1/4 CORNER OF SECTION 02
 TOWNSHIP 37 NORTH
 RANGE 09 EAST OF THE 4TH PM
 TOWN OF PINE LAKE
 COUNTY OF ONEIDA

WISCORS - ONEIDA COUNTY
 N: 193,873.901 USft
 E: 284,471.937 USft
 Datum: NAD83 (2011)
 GNSS Method RTN - Direct
 GNSS Control WISCORS VRS



The coordinate value shown has been verified by the average of two or more GPS observations at a markedly different time.

A-E 7.08(3)(b) Description of any record evidence, monument evidence, occupational evidence, testimonial evidence, or any other material evidence.

Original Surveyor: William E. Daugherty

Date of Original Survey Commenced: August 28, 1863
 Completed: _____, 1863

REGISTER OF DEEDS OFFICE
 ONEIDA COUNTY
 FILED

Original Accessories:
 Maple 10 S. 19° E. 24
 Birch 10 N. 55° W. 19

See Previous Monument Record:
 Index No. E-19

JAN 19 2022

KYLE J. FRANSON
 REGISTER OF DEEDS

1956 - Surveyor 00259 - Norman J. Loftus - Set an iron pipe with a brass cap.

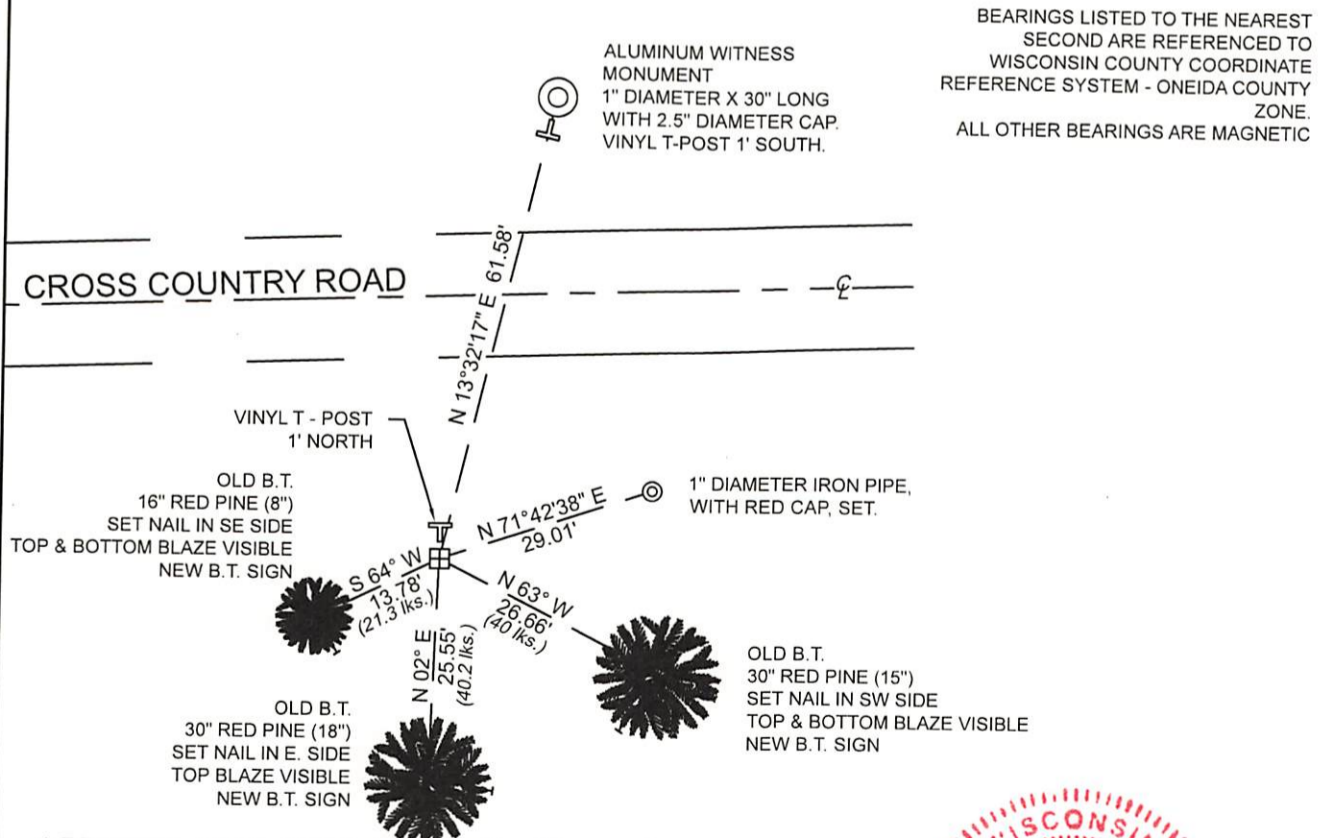
February 25, 1977 - Surveyor 498 - Phillip T. Hansen - Recovered a 2 1/2" iron pipe with a 4" brass cap in good condition.

A-E 7.08(3)(f) The corner is a found perpetuated location.

May 26, 2021 - In preparation of a road reconstruction project, I found a 2 1/2" iron pipe with a 4" x 4" brass cap monument, stamped to identify corner location, ± 35' south of the Cross Country Road centerline. I also found 2 of Loftus's witnesses and 1 of Hansen's witnesses intact as shown below.

November 04, 2021 - I returned to the location and found the monument to be the same and intact, and established new witnesses as shown below. By appearance, road reconstruction had not yet occurred.

A-E 7.08(3)(c)(d)(e)(h) Plan view of corner with references to at least 4 witness monuments. If in disagreement with previously established corner, show the distances between the two corners and also indicate the ties to the disputed. The directions and distances to other public land survey corners used as evidence or used for determining the corner location.



BEARINGS LISTED TO THE NEAREST SECOND ARE REFERENCED TO WISCONSIN COUNTY COORDINATE REFERENCE SYSTEM - ONEIDA COUNTY ZONE. ALL OTHER BEARINGS ARE MAGNETIC

A-E 7.08(3)(i) I, Jeffrey L. DeMuth, Professional Land Surveyor No. S-2656, hereby certify that the corner location on this record was determined by me or under my direction and control and that this U.S. Public Land Survey Monument Record is correct and complete to the best of my knowledge, and belief

Jeffrey L. DeMuth
 SIGNATURE

December 30, 2021
 DATE

