

CERTIFIED LAND CORNER RESTORATION

Index No. **C-21**

State of Wisconsin

County of Oneida } ss.

I, Phillip T. Hansen, do hereby

certify that on the 9th day

of December, 19 76, I found

evidence of the Quarter

corner of Section 1 & 2

Township 37 North, Range

9 East, Fourth Principal Meridian,

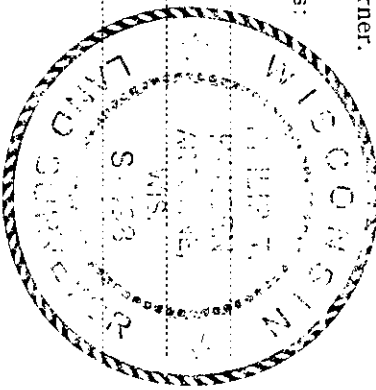
as described hereon; and that from this evidence

I established a new monument and accessories

as described hereon to perpetuate the original

location of this corner.

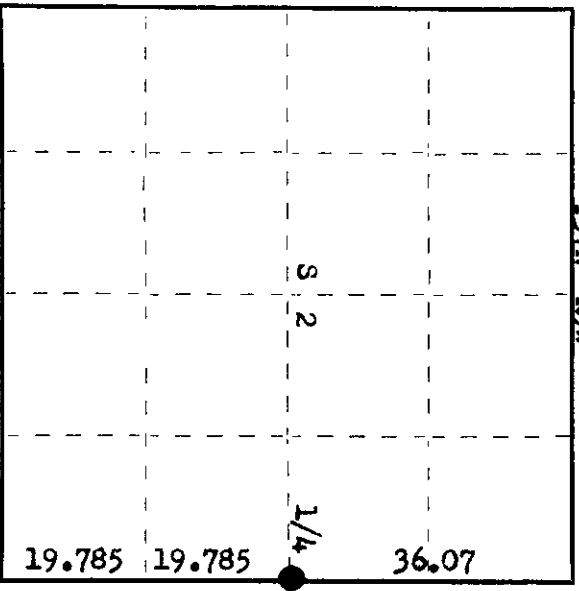
T37N R9W



Resident witnesses:

Jim Clarlin

Herb Wagoner



History of original corner establishment:

Original Corner established by Wm. E. Dougherty, Deputy Surveyor, in 1863, from which

White Pine 4" bears N24°E, 146 links and Birch 7" bears S82°W, 54 links.

Corner re-established by N. Loftus, Ripco Surveyor, in 1956. Ran random line south from

Section Corner 35, 36, 1 & 2 - at 36.07 set iron pipe with brass cap at Dorr's chainage,

at 75.64, closed out at Section Corner.

Marked Pine 6" N24°W, 1.68 chains.

Description of corner evidence found:

Recovered 2" iron pipe with 4" square brass cap, stamped: Monument recovered in good condition, firmly in ground, projecting 30" above ground.

Recovered Red Pine 6" (14") N24°W, 168.0 links, scribing not legible. Aspen 8" N32°W, 21.0 links, scribed 1/4 S2 BT. Aspen 8" S58°W, 6.2 links, scribed 1/4 S2 BT.

Description of monument and accessories I established to perpetuate the original location of this corner.

As monument was recovered in good condition, it was left as recovered. Marked NBT - Red Pine 12" N61°W, 160.4 links, scribed 1/4 BT.

T37N R9E
1/4 S2 S1
RIPCO

Dated at Rhinelander, Wis., this 25th day of February, 19 77

Signature Phillip T. Hansen Title Registered Land Surveyor Registration No. S-498
(County Surveyor, Registered Land Surveyor, or other duly authorized official)

Office of Register of Deeds, County of Oneida, I hereby certify that the within instrument was filed in this office for record on the 9th day of March, 19 77 at 3:00 o'clock P. M.

Dorrie Dorrage Kuehn
(Register of Deeds)

By: _____ Deputy

3709022000