

CERTIFIED LAND CORNER RESTORATION

Index No. E-15

State of Wisconsin }
County of Oneida } ss.

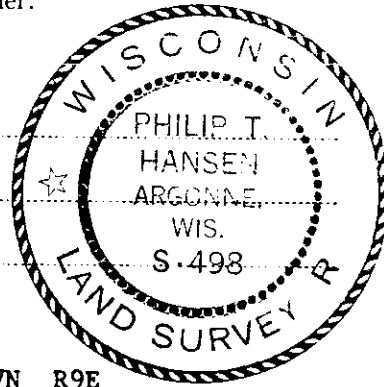
I, Philip T. Hansen, do hereby certify that on the 18th day of September, 1978, I found evidence of the Quarter corner of Sections 3 & 10 Township 37, North, Range 9 East, Fourth Principal Meridian, as described hereon; and that from this evidence I established a new monument and accessories as described hereon to perpetuate the original location of this corner.

Resident witnesses:

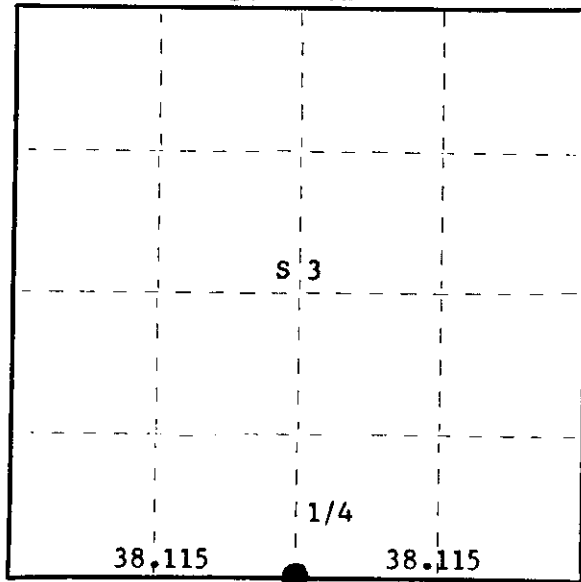
Jim Claflin

Herb Wagoner

John Masbaum



T37N R9E



○ = Corner monument restored.

History of original corner establishment: Original corner established by Wm. Dougherty, Deputy Surveyor, in 1863 from which aspen 8" bears S 66° E, 21 links and aspen 8" bears N 70° W, 14 links.

Corner established by N. Loftus, Ripco surveyor, in 1958. Ran random line east from section corner 3, 4, 9 and 10, bearing 86° 40' mag. 76.235 chains to close out 3 links south of section corner 2, 3, 10 and 11. Set 1/4 corner at 38.11 1/2 chains intermediate. Drove 3/4" x 12" iron rod in road bed. Set a reference corner 25 links north and marked NBT's. - Red Pine 12" S65°W, 1.48-3/4 chains
Red Pine 3" N46°W, 94-3/4 chains

Description of corner evidence found:

Recovered 2" iron pipe in road bed, 1" below surface. Recovered 2" iron pipe with 6" square brass cap, 25 links north at true corner. Monument projects 2' above ground.
Cap stamped:

Recovered OBT's -

Red Pine 12" (18") S65°W (S68°W) 1.48-3/4 chains, scribed 1/4 S10 BT.
Red Pine 3" (10") N46°W 94.75 links (94.4 links), scribing grown over.

T37N R9E
1/4 S + 3/10 1/4
Corner 25 lks. South
RIPCO

Description of monument and accessories I established to perpetuate the original location of this corner.

As Ripco's witness corner was set so close to the road, it was in danger of being destroyed. Set a new 2 1/2" Berntsen A-1 Federal Monument (O.C.), 60 links north of true corner. Monument projects 8" above ground. Cap stamped:

Marked NBT - Red Pine 12" N34°W, 104.5 links, scribed 1/4 BT.
Measurement made to true corner.

S498-1978
T37N R9E
1/4 S + 3/10 W.C.
60 lks. to Corner

Dated at Rhineland, Wis., this 4th day of October, 1978.

Signature Philip T. Hansen Title Registered Land Surveyor Registration No. S-498
(County Surveyor, Registered Land Surveyor, or other duly authorized official)

Office of Register of Deeds, County of Oneida, I hereby certify that the within instrument was filed in this office for record on the 18th day of October, 1978 at 1:50 o'clock P M.

Doris Verage Kuehn
(Register of Deeds)

By.....Deputy

FORM 985 H. C. W. LER CO., MILWAUKEE

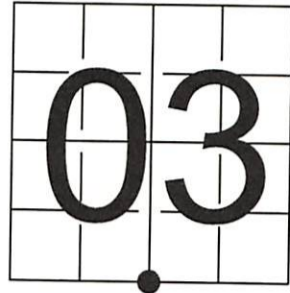
3709030020

U S PUBLIC LAND SURVEY MONUMENT RECORD

NOTE: This form is intended and designed to fulfill all requirements of Wisconsin Administrative Code, Chapter A-E 7.08 U.S. Public Land Survey Monument Record (3) (a-i)

A-E 7.08(3)(a) Identity of corner
 SOUTH 1/4 CORNER OF SECTION 03
 TOWNSHIP 37 NORTH
 RANGE 09 EAST OF THE 4TH PM
 TOWN OF PINE LAKE
 COUNTY OF ONEIDA

WISCORS - ONEIDA COUNTY
 N: 193,751.984 USft
 E: 279,429.303 USft
 Datum: NAD83 (2011)
 GNSS Method RTN - Direct
 GNSS Control WISCORS VRS



The coordinate value shown has been verified by the average of two or more GPS observations at a markedly different time.

A-E 7.08(3)(b) Description of any record evidence, monument evidence, occupational evidence, testimonial evidence, or any other material evidence.

Original Surveyor: William E. Daugherty

REGISTER OF DEEDS OFFICE
 ONEIDA COUNTY
 FILED

Date of Original Survey Commenced: August 28, 1863
 Completed: _____, 1863

JAN 19 2022

Original Accessories:

Aspen 8 S. 66° E. 21
 Aspen 8 N. 70° W. 14

See Previous Monument Record:
 Index No. E-15

KYLE J. FRANSON
 REGISTER OF DEEDS

1958 - Surveyor 00259 - Norman J. Loftus - Set 3/4" X 12" iron rod in road bed, and set a reference corner 25 links north.

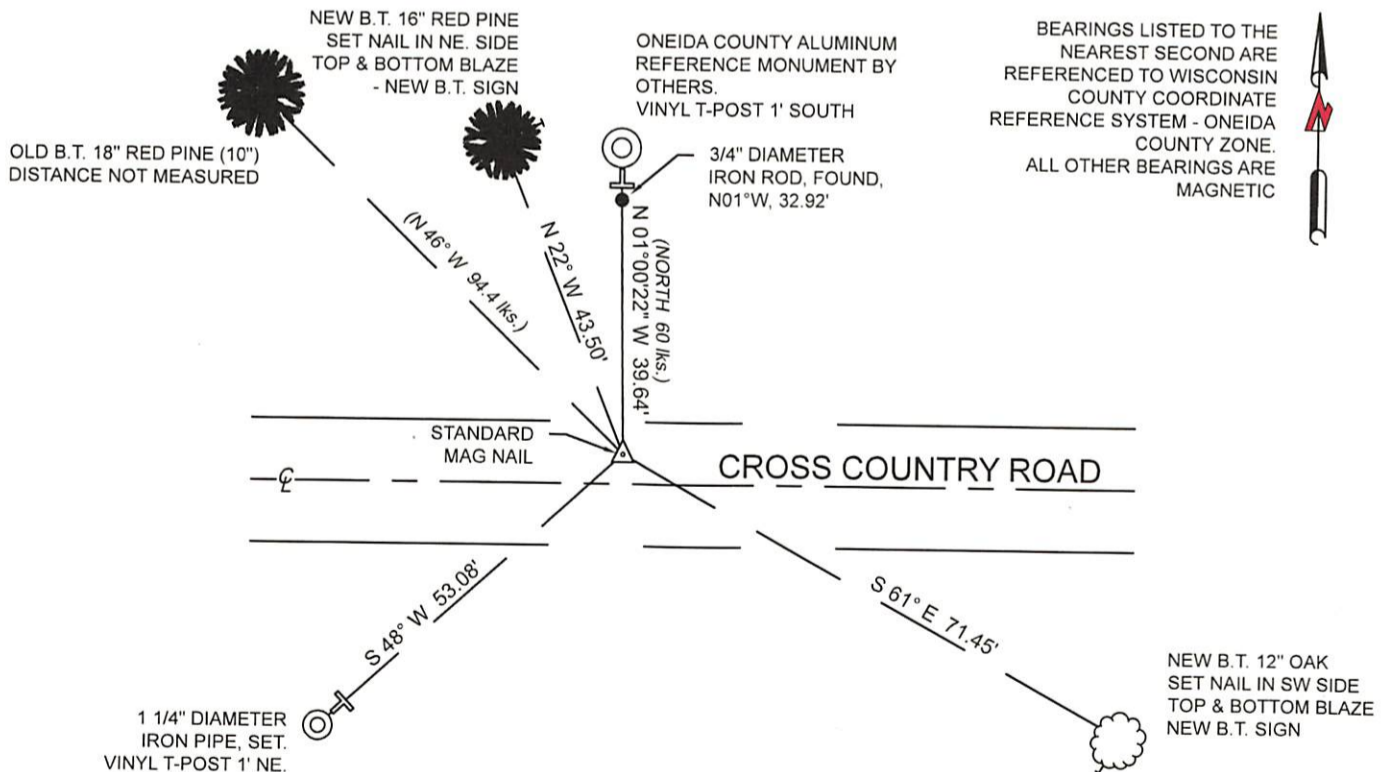
October 4, 1978 - Surveyor 498 - Phillip T. Hansen - Recovered a 2" iron pipe in road bed, and a 2" iron pipe with a 6" square brass cap, 25 links north. Hansen set a 2 1/2" Berntsen A-1 Federal Monument (O.C.) 60 links north

A-E 7.08(3)(f) The corner is a found perpetuated location.

May 26, 2021 - In preparation of a road reconstruction project, I found: a standard Mag Nail ±7 feet north of Cross Country Road centerline, Loftus's reference monument laying down (now planted in my back yard), and Hansen's reference monument intact. I also found 1 of Loftus's witnesses as shown below.

November 04, 2021 - I returned to the location and found the monument to be the same and intact, and established new witnesses as shown below. By appearance, road reconstruction had not yet occurred.

A-E 7.08(3)(c)(d)(e)(h) Plan view of corner with references to at least 4 witness monuments. If in disagreement with previously established corner, show the distances between the two corners and also indicate the ties to the disputed. The directions and distances to other public land survey corners used as evidence or used for determining the corner location.



A-E 7.08(3)(i) I, Jeffrey L. DeMuth, Professional Land Surveyor No. S-2656, hereby certify that the corner location on this record was determined by me or under my direction and control and that this U.S. Public Land Survey Monument Record is correct and complete to the best of my knowledge, and belief

Jeffrey L. DeMuth
 SIGNATURE

December 30, 2021
 DATE

