

CERTIFIED LAND CORNER RESTORATION

Index No. **D-14**

State of Wisconsin } ss.
 County of Oneida }

I Phillip T. Hansen do hereby
 certify that on the 26th day

of April 1976, I found
 evidence of the SW 1/16

corner of Section 3
 Township 37 North, Range

9 East, Fourth Principal Meridian,
 as described hereon; and that from this evidence

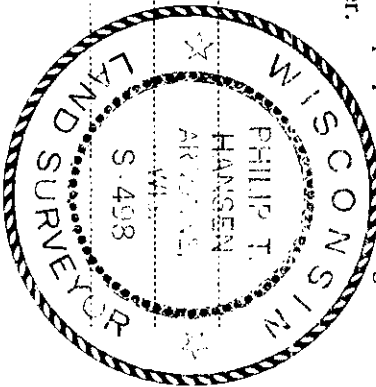
I established a new monument and accessories
 as described hereon to perpetuate the original
 location of this corner.

Resident witnesses:

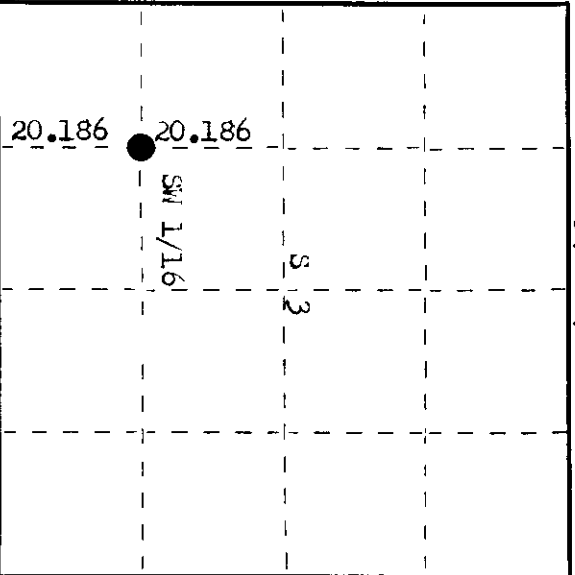
Glen Barker

Jim Clarlin

Herb Wagoner



T37N R9E



○ = Corner monument restored.

History of original corner establishment:

This Corner established by Ripco surveyor, Loftus, in 1958. Ran random line bearing
 353° 13' mag. from W 1/16 corner, south line to point 55 1/2 lks east of W 1/16 North line.
 Set WC 1/16 at 292 lks West at 40.37 1/2 chs. set SW 1/16 at 20.186 chains 146 lks West.

Marked NBTs - Tamarack 7" N 78° W 66-3/4 lks
 Tamarack 4" N 29° E 27 lks.

Description of corner evidence found:

Recovered 1 1/2" OD iron pipe with 2" brass cap stamped. Also a 3" squared Tamarack post
 beside it. SW 1/16 133

The distance from BTs checked with the distance to post.

Iron pipe must have been set at a later date.

Recovered DBT - Tamarack 7" (8") N 78° W 66-3/4 lks, scribing partly visible.

Tamarack 4" (6") N 29° E 27 lks, scribed SW 1/16 BT.

Description of monument and accessories I established to perpetuate the original location of this corner.

The monument being in excellent condition, it was set in post hole to check with distances
 to BTs and set old post beside it.

Added T37N R9E to stamping on brass cap.

Painted monument and BTs blue.

Dated at Rhinelander, Wis., this 16th day of August, 1976

Signature *Phillip T. Hansen* Title Registered Land Surveyor Registration No. 5-498
 (County Surveyor, Registered Land Surveyor, or other duly authorized official)

Office of Register of Deeds, County of Oneida
 Instrument was filed in this office for record on the 26th day of April, 1976. I hereby certify that the within
 at 4:02 o'clock P.M.

Dorcia Verage Neuman
 (Register of Deeds)

By Deputy

3709031030