

CERTIFIED LAND CORNER RESTORATION

Index No. **B-17**

State of Wisconsin } ss.
County of **Oneida**

I **Phillip T. Hansen** do hereby
certify that on the **4th** day
of **February** 19 **77**, I found

evidence of the **N 1/16**
corner of **Section 2 & 3**

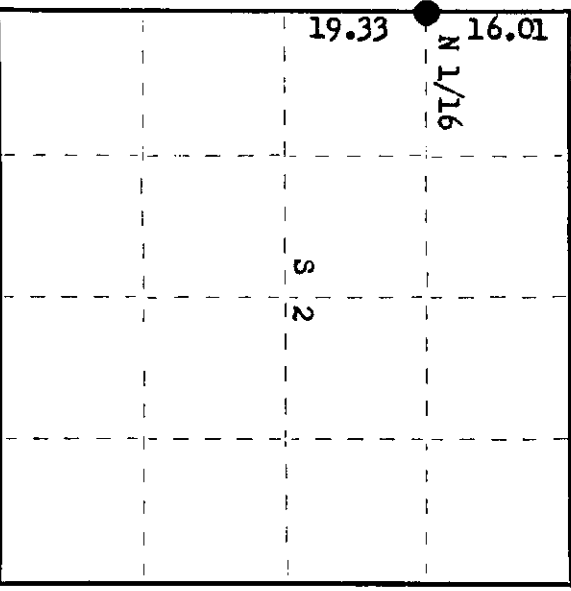
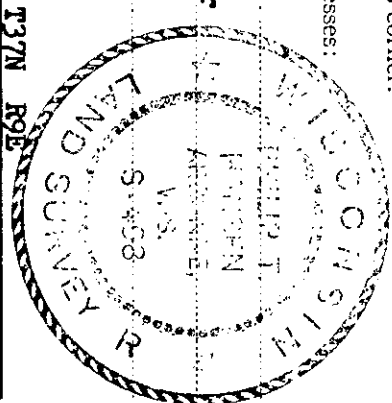
Township **37** North, Range
9 East Fourth Principal Meridian,

as described hereon; and that from this evidence
I established a new monument and accessories
as described hereon to perpetuate the original
location of this corner.

Resident witnesses:

J. Claflin

Herb Wagoner



○ = Corner monument restored.

History of original corner establishment:

Corner established by N. Loftus, Ripco Surveyor, in 1956. From recovered Corner 2, 3, 10 & 11, ran N 4° W, along Old #17 road, 73.99 chains to Section Corner 34, 35, 2 & 3. This checked out with B.F. Dorr's chainage in 1894. Set N 1/16 corner at 57.98 chains North. Set 1" iron pipe with 2" brass cap. No record of BTs set.

Description of corner evidence found:

Recovered 1" iron pipe with 2" square brass cap stamped:
Monument projects 1 1/4" above ground.
No evidence of any BTs. Monument recovered in good condition.

T37N R9E
N 1/16 S 1/2
3 1/2
RIFCO

Description of monument and accessories I established to perpetuate the original location of this corner.

As monument was recovered in good condition and securely in ground, it was left in place.
Marked NBTs - Black Spruce 7" N 85° W 69.2 links, scribed 1/16 BT.
Maple 6" N 22° E 52.4 links, scribed 1/16 BT.

Dated at **Rhinelander**, Wis., this **25th** day of **February**, 19 **77**

Signature **Rhinelander** Title **Registered Land Surveyor** Registration No. **S-498**
(County Surveyor, Registered Land Surveyor, or other duly authorized official)

Office of Register of Deeds, County of **Oneida**
instrument was filed in this office for record on the **23rd** day of **March**, 19 **77**
at **3:00** o'clock **P.**M.

Ernie George Kuehn
(Register of Deeds)

By: _____ Deputy

3709033000