

CERTIFIED LAND CORNER RESTORATION

Index No. E-13

State of Wisconsin }  
 County of Oneida } ss.

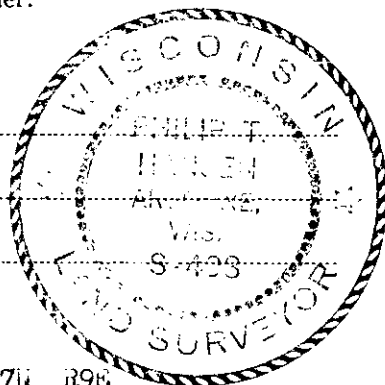
I Philip T. Hansen, do hereby certify that on the 26th day of April, 1976, I found evidence of the Section corner of S3, 4, 9 and 10 Township 37, North, Range 9 East, Fourth Principal Meridian, as described hereon; and that from this evidence I established a new monument and accessories as described hereon to perpetuate the original location of this corner.

Resident witnesses:

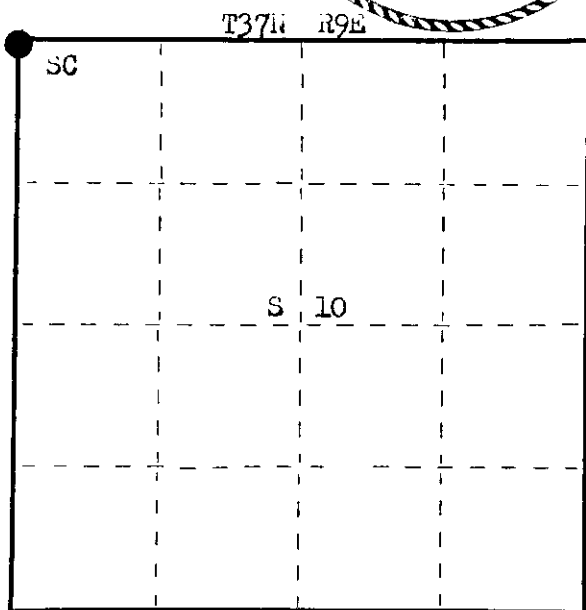
Glen Barker

Jim Claflin

Herb Wagoner



FORM 985 H. C. MILLER CO., MILWAUKEE



○ = Corner monument restored.

History of original corner establishment:

Original Corner established by Wm. E. Dougherty, Deputy Surveyor, in 1863, from which Y. Pine 10" bears N 35° W 43 lks and Birch 8" bears S 24° E 31 lks.

This Corner recovered by Ripco surveyors, Loftus and Goddard, - Buried iron pipe 1" diameter below surface of road. Set two reference posts - #1 2½" iron pipe with 4" square brass cap, 18 lks South and #2 - 2½" iron pipe with 4" square brass cap 38 lks North.

Description of corner evidence found:

Recovered 1" iron pipe buried below road surface and two reference marks. #1 2½" iron pipe with 4" brass cap stamped, and #2 - 2½" iron pipe with 4" brass cap, 38 lks South. This #2 was badly bent.

Corner sets on the North edge of Cross Country Road.

T37N R9E

4 | 3  
9 | 10

Cor. 18 lks South  
RIPCO

Description of monument and accessories I established to perpetuate the original location of this corner.

extracted #2 reference monument and reset new reference monument 60 lks South of true corner. Set 2½" iron pipe with brass cap stamped.

Witness Monument projects 18" above ground.

NBO - Hi Line Pole #3709-10.1 S 74° E 144 lks.

S498

T37N R9E

54 | 53  
59 | 510

N 60 lks.  
CPI-1976

Dated at Rhineland, Wis., this 16th day of August, 1976

Signature Philip T. Hansen Title Registered Land Surveyor Registration No. S-498  
 (County Surveyor, Registered Land Surveyor, or other duly authorized official)

Office of Register of Deeds, County of Oneida, I hereby certify that the within instrument was filed in this office for record on the 22nd day of September, 1976 at 1:00 o'clock P M.

Louis Terrace Kirchn  
 (Register of Deeds)

By \_\_\_\_\_ Deputy

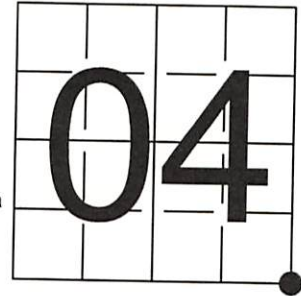
3709040000

# U S PUBLIC LAND SURVEY MONUMENT RECORD

NOTE: This form is intended and designed to fulfill all requirements of Wisconsin Administrative Code, Chapter A-E 7.08 U.S. Public Land Survey Monument Record (3) (a-i)

A-E 7.08(3)(a) Identity of corner  
 SOUTHEAST CORNER OF SECTION 04  
 TOWNSHIP 37 NORTH  
 RANGE 09 EAST OF THE 4TH PM  
 TOWN OF PINE LAKE  
 COUNTY OF ONEIDA

WISCRS - ONEIDA COUNTY  
 N: 193,711.926 USft  
 E: 276,916.577 USft  
 Datum: NAD83 (2011)  
 GNSS Method RTN - Direct  
 GNSS Control WISCORS VRS



The coordinate value shown has been verified by the average of two or more GPS observations at a markedly different time.

A-E 7.08(3)(b) Description of any record evidence, monument evidence, occupational evidence, testimonial evidence, or any other material evidence.

Original Surveyor: William E. Daugherty

REGISTER OF DEEDS OFFICE  
 ONEIDA COUNTY  
 FILED

Date of Original Survey Commenced: August 28, 1863  
 Completed: \_\_\_\_\_, 1863

JAN 19 2022

Original Accessories:  
 Yellow Pine 10 N. 35° W. 43  
 Birch 8 S. 24° E. 31

See Previous Monument Record:  
 Index No. E-13

KYLE J. FRANSON  
 REGISTER OF DEEDS

Surveyor 00259 - Norman J. Loftus & Ripco Surveyor Goddard - buried 1" diameter iron pipe below surface of road, and set 2 reference posts - #1 - 2 1/2" iron pipe with a 4" square brass cap, 18 links south, and #2 - 2 1/2" iron pipe with a 4" square brass cap 38 links north.

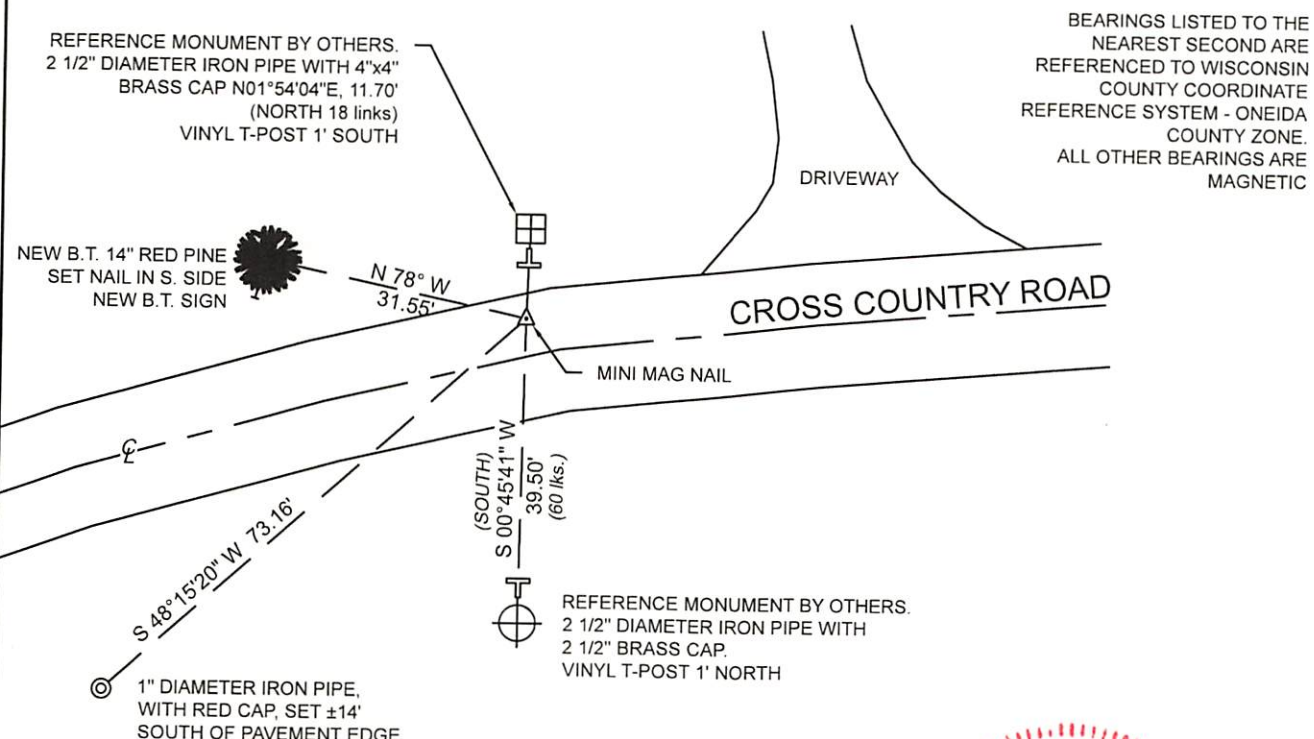
August 16, 1976 - Surveyor 498 - Phillip T. Hansen - Recovered a 1" iron pipe buried below road surface, and a two reference marks. South reference mark badly bent and was extracted. Hansen set a new reference monument 60 links south - 2 1/2" iron pipe with brass cap stamped.

A-E 7.08(3)(f) The corner is a found perpetuated location.

May 26, 2021 - In preparation of a road reconstruction project, I found: a mini Mag Nail ±8 feet north of Cross Country Road centerline, Loftus's reference monument intact as described, and Hansen's new reference monument intact as described.  
 NOTE: Based on existing reference monuments, I believe that Hansen's notation on reference monuments is incorrect.

November 04, 2021 - I returned to the location and found the monument to be the same and intact, and established new witnesses as shown below. By appearance, road reconstruction had not yet occurred.

A-E 7.08(3)(c)(d)(e)(h) Plan view of corner with references to at least 4 witness monuments. If in disagreement with previously established corner, show the distances between the two corners and also indicate the ties to the disputed. The directions and distances to other public land survey corners used as evidence or used for determining the corner location.



A-E 7.08(3)(i) I, Jeffrey L. DeMuth, Professional Land Surveyor No. S-2656, hereby certify that the corner location on this record was determined by me or under my direction and control and that this U.S. Public Land Survey Monument Record is correct and complete to the best of my knowledge, and belief



SIGNATURE

December 30, 2021  
 DATE