

U.S. PUBLIC LAND SURVEY MONUMENT LOCATION RECORD

Recorders Data

CORNER: NW Section SECTION: 9 TOWNSHIP 37 NORTH RANGE 9 EAST/WEST

FOR M.C. CORNER INDICATE: NAME OF WATERWAY N/A SECTION LINE N/A

(CITY/VILLAGE/TOWN) OF: Pine Lake COUNTY OF: Oneida

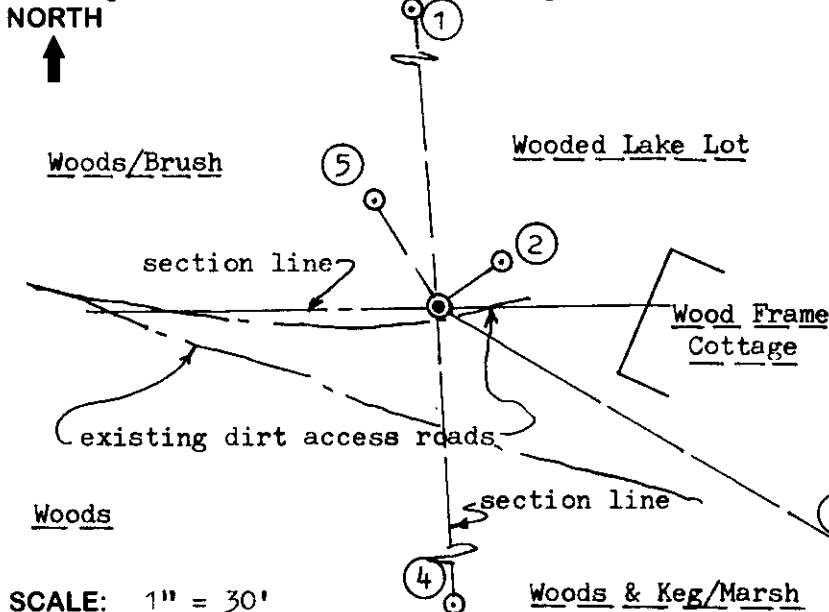
Description of monument found or placed and all other evidence used as a basis for monument location; including all monuments and related measurements required if the corner location is reestablished by lost corner proportionate methods. Also indicate name of original surveyor, survey date, corner monument set and established bearing trees, witness or reference monuments with ties from available records.

Found and accepted an old, rusted and undisturbed 1 1/4" dia. iron pipe monument with uncapped top at grade for this corner location. I carefully removed the 17" long iron pipe monument and reset the corner location with a standard 2" dia. aluminum pipe monument, which I cut to 17" long due to subsurface rooting, with stamped Oneida County cap flush to grade. I left the old iron pipe flat on grade next to a standard white poly 'T' marker post that I also set 8.3' South of the corner monument. In 1863, Daugherty/GLO set a wood post as the original corner and marked OBTs, a 20" Py N76°W 200 lks and a 12" Py S75°E 320 lks, all of which are now obliterated or indistinguishable. In 1941, Maine set a galvanized tie rod with anchor fins at the corner, and noted he had found point of an old wood stake in bottom of hole at corner location; he also noted that the GLO NW OBT Py stump that he had also found in 1926 was mutilated but some of it still there; and he noted new BTs, a 10" Pw S24°E 25 lks, now gone, an 8" Pw N43°W 25 lks, now believed to be record BT Pw found for witness ties below, and he noted a new BT 6" Py N70 1/2°E 15.5 lks, now believed to be gone by position check. The corner location is further verified by reference to the following record surveys:

May 1954 by Rowinski per L-939. December 1962 by Wincentzen per C-1197. 1979 by J. Rein per C-147. December 1980 by Poskie per B-1902. February 1981 by Poskie per B-1903 and B-1904, as filed in Oneida County survey records; also December 1965 by Poskie per A-475.

The record NE Pr BT and NW Pw BT which I found and used for new ties below, are the same BTs as noted on foregoing records. This recovery completed October 9, 1998; witnesses noted below.

Plan view map of monument location with bearing and distance ties to a minimum of four(4) described witness or reference monuments of concrete, natural stone, iron, live bearing trees or equivalent material. If applicable, also show a minimum of two(2) bearing and distance ties to any other monument found and not accepted; including the bearing and distance from the accepted monument. Indicate the basis for bearings of reference ties if not referenced to magnetic north.



WITNESS MONUMENT TIES:

- ① Standard 2" dia. aluminum pipe found with Oneida Co. cap at South Wit MC location/Pine Lake per record ties N05°30'W 69.86'.
- ② Record BT 17" Pr with lower face blaze open N54°E 12.43'.
- ③ New BT 15" Pr S59°E 77.10'.
- ④ New BT 9" Sb S02°E 46.63'.
- ⑤ Record BT 26" Pw with lower face blaze open, N30°W 19.71'. I also nailed a standard BT sign to SE face.

Note: Recovery witnessed by Raymond Woitach and John Werner, adjacent owners.

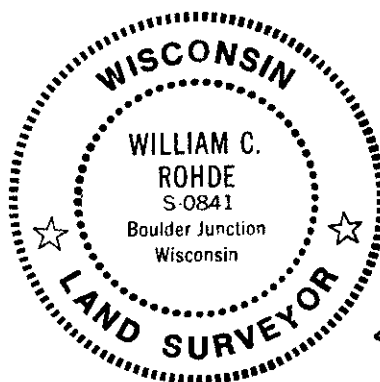
SCALE: 1" = 30'

Unless otherwise indicated, all bearing tree ties are to a .25" dia. by 2.5" long PK nail with a 1.25" dia. steel washer driven into unblazed right face and a .25" dia. by 2.5" long PK nail with a 2" dia. steel washer stamped 'BT' is also driven into unblazed face of bearing tree at DBH; the basis for measured bearings is magnetic to nearest degree and all tie distances are horizontal measure to nearest 1/100th feet.

LAND SURVEYOR CERTIFICATION:

I, William C. Rohde, hereby certify that I am a duly licensed Professional Land Surveyor in Wisconsin, that this USPLS monument location was determined by me or under my direction and control, and that this U.S. Public Land Survey Monument Location Record is true and correct to the best of my knowledge and belief.

William C. Rohde Date: 02-10-99
Signature



RLS SEAL

SHEET NO. 1 OF 1

This form is intended to fulfill requirements of Chapter A-E 7.08 (3)(a)(b)(c)(d)(e)(f)(g)(h)(i) U.S. Public Land Survey Monument Location Record, Wisconsin Administrative Code. Use reverse side for geodetic location data and/or continuation purposes.

		9	

SECTION LOCATION MAP

INDEX NO. E 9

3409050000

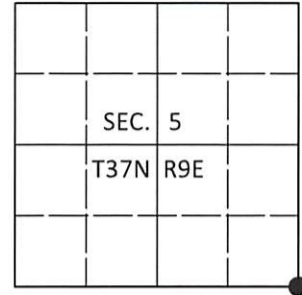
INDEX NO.

U.S. PUBLIC LAND SURVEY MONUMENT RECORD

Note: This form is intended and designed to fulfill all requirements of Wisconsin Administrative Code, Chapter A-E 7.08 U.S. Public Land Survey Monument Record (3)(a-i).

(a) CORNER LOCATION
 Cor. of Secs. 4, 5, 8 & 9
 Township 37 North
 Range 9 East of the 4th P.M.
 Town of Pine Lake
 County of Oneida

WISCRS - Oneida County
 N: 193,925.18 USft
 E: 271,665.40 USft
 Datum: NAD 83(2011)
 GNSS Method: RTN - Offset
 GNSS Control: WISCORS VRS



(b) HISTORY OF ORIGINAL CORNER ESTABLISHMENT

Original Surveyor: _____ Original Accessories: _____
 Date of Survey Commenced: _____ See previous monument record(s)
 Completed: _____

(b)(f)(g)(h) Description of monument found at this corner and if it was accepted, state all evidence (material, testimonial, occupational, plats, records, other monuments) used as a basis for accepting. If not accepted or if nothing was found, state evidence used as basis for establishing location. If re-established through lost corner proportionate methods, indicate all monuments, distances and directions used to establish. Indicate type of monument and sign post found or set.

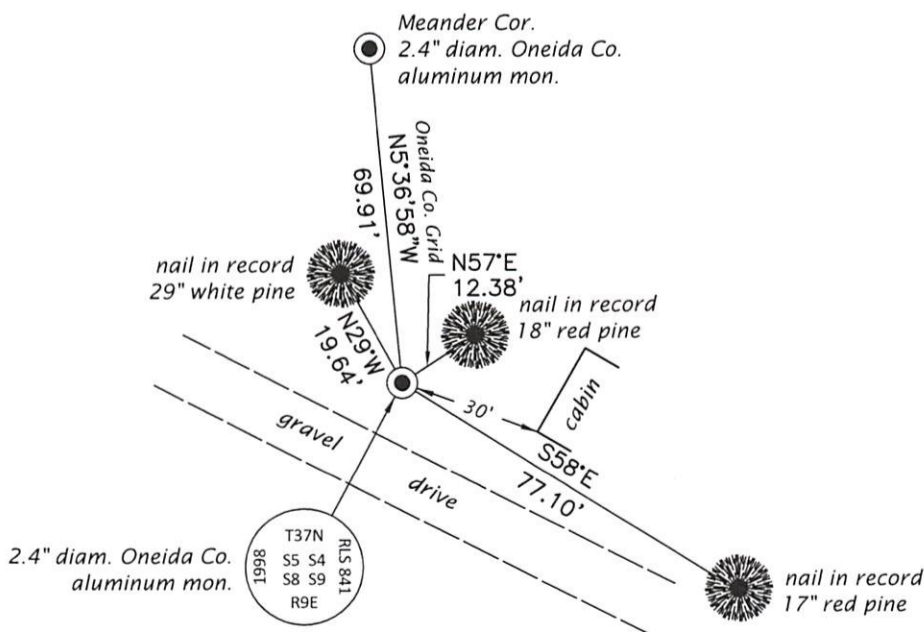
This is a perpetuation of the following monument record(s) that comprise a complete history of the corner:

Feb. 10, 1999: USPLS Monument Record No. 3709050000 by William C. Rohde, PLS

Dec. 11, 2020: I found and accepted the record monument, a 2.4" diam. aluminum pipe with a 3.3" diam. Oneida Co. aluminum cap flush with the ground surface. The record bearing tree at S2'E (#4) is dead. I found or established accessories as shown below. I found a white vinyl sign post bearing South, 8.3 ft.

The coordinate value shown has been verified by at least one of the following methods: 1) comparison to a previously GPS determined published value; 2) the value is the average of two or more GPS observations at a markedly different time; 3) one or more distances were measured back to the GPS observed corner from temporary GPS observed offset locations.

(c)(d)(e) Plan view of corner with ties to at least 4 witness monuments. If in disagreement with previously established corner, show the distances between the two corners and also indicate the ties to the disputed.



REGISTER OF DEEDS OFFICE
 ONEIDA COUNTY
 FILED

JAN 13 2021

KYLE J. FRANSON
 REGISTER OF DEEDS

(i) I, Jeffrey W. Austin, Professional Land Surveyor No. S-1885, hereby certify that the corner location on this record was determined by me or under my direction and control and that this U.S. Public Land Survey Monument Record is correct and complete to the best of my knowledge and belief.

 Signature 15 DEC 2020
 Date