

U.S. PUBLIC LAND SURVEY MONUMENT LOCATION RECORD

Recorders Data

CORNER: South Wit MC SECTION: 4 TOWNSHIP 37 NORTH RANGE 9 EASTWEST WEST

FOR M.C. CORNER INDICATE: NAME OF WATERWAY Pine Lake SECTION LINE West

~~STREET/VILLAGE~~ (TOWN) OF: Newbold COUNTY OF: Oneida

Description of monument found or placed and all other evidence used as a basis for monument location; including all monuments and related measurements required if the corner location is reestablished by lost corner proportionate methods. Also indicate name of original surveyor, survey date, corner monument set and established bearing trees, witness or reference monuments with ties from available records.

Found and accepted an old rusted 1 1/4" dia. iron pipe with uncapped top 8" above grade and undisturbed at this corner location. Also found a 5/8" dia. steel rod 4" up and a 1" dia. steel shaft tipped 45° SW and 2 1/2" up at SW side of iron pipe. I drove old iron pipe top to 4" above grade and set a standard 2" dia. by 30" long aluminum pipe monument with Oneida stamped cap 6" above grade.

In 1863, Daugherty/GLO set a wood post as the original MC and marked OBTs, a 6" Aspen S60°W 20 lks and a 7" Aspen S17°E 136 lks, which are all now obliterated.

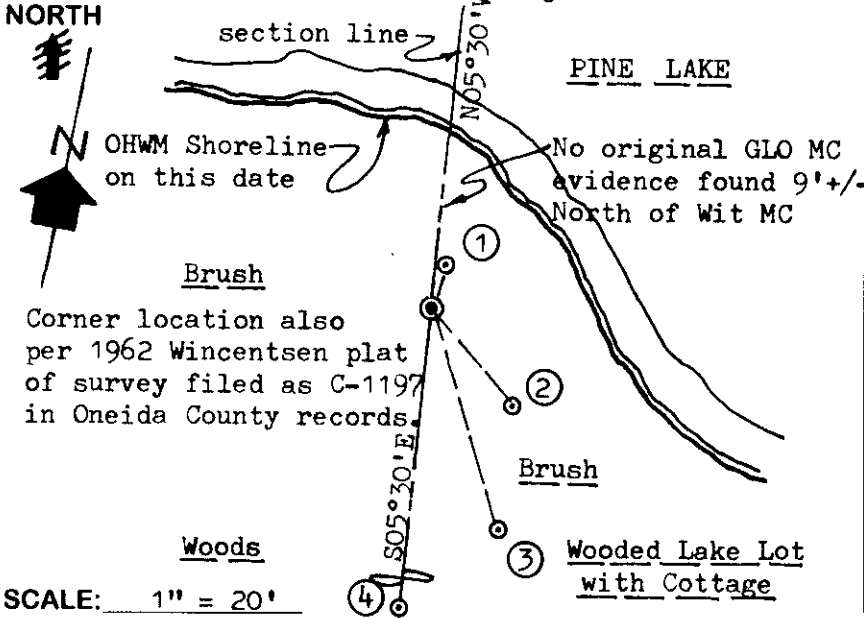
In 1954, Rowinski notes an iron pipe at this corner N05°46'W 70' from the SW corner of Section 4, per his plat of survey filed as L-939 in Oneida County records; no BTs noted.

In 1965, Poskie notes a monument symbol at this corner N05°46'W 70.0' from SW corner of Section 4, per his plat of survey A-475 in Oneida County records; no BTs noted.

In 1979, J. Rein/Wilderness Surveying of Woodruff, Wis. found and accepted the iron pipe at this witness MC location at N05°36'01"W 69.86' from SW corner of Section 4, per his plat of survey filed as C-147 in Oneida County records; no BTs noted.

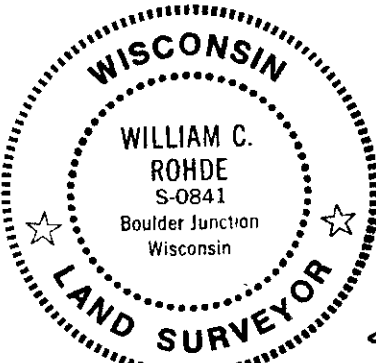
In 1863, Daugherty noted the original MC post at 1.2 chains or 79.2' North of the SW corner of Section 4, or about 9.3' North of this Witness MC monument, but no evidence could be found. This recovery completed October 9, 1998, and witnessed as noted below.

Plan view map of monument location with bearing and distance ties to a minimum of four(4) described witness or reference monuments of concrete, natural stone, iron, live bearing trees or equivalent material. If applicable, also show a minimum of two(2) bearing and distance ties to any other monument found and not accepted; including the bearing and distance from the accepted monument. Indicate the basis for bearings of reference ties if not referenced to magnetic north.



- WITNESS MONUMENT TIES:**
- ① New BT 6" Or N18°E 4.64' to PK & washer in left face.
 - ② New BT 5" Or S40°E 13.23'.
 - ③ New BT 6" Bw S17°E 24.30'.
 - ④ Standard 2" aluminum pipe monument with stamped Oneida County cap flush previously set this date at SW corner of Section 4, S05°30'E 69.86'.
- Note: Standard white poly 'T' marker post set 6" North of MC monument.
Recovery witnessed by adjacent owners John Werner and Raymond Weitach.

SCALE: 1" = 20'
Unless otherwise indicated, all bearing tree ties are to a .25" dia. by 2.5" long PK nail with a 1.25" dia. steel washer driven into unblazed right face and a .25" dia. by 2.5" long PK nail with a 2" dia. steel washer stamped 'BT' is also driven into unblazed face of bearing tree at DBH; the basis for measured bearings is magnetic to nearest degree and all tie distances are horizontal measure to nearest 1/100th feet.



LAND SURVEYOR CERTIFICATION:

I, William C. Rohde, hereby certify that I am a duly licensed Professional Land Surveyor in Wisconsin, that this USPLS monument location was determined by me or under my direction and control, and that this U.S. Public Land Survey Monument Location Record is true and correct to the best of my knowledge and belief.

William C. Rohde Date: 01-11-99
Signature

		4	

SECTION LOCATION MAP
INDEX NO. 3709050100

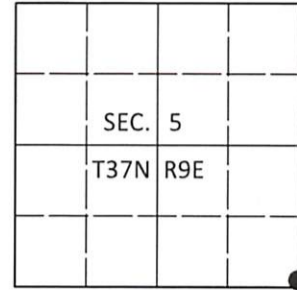
INDEX NO. D-119

U.S. PUBLIC LAND SURVEY MONUMENT RECORD

Note: This form is intended and designed to fulfill all requirements of Wisconsin Administrative Code, Chapter A-E 7.08 U.S. Public Land Survey Monument Record (3)(a-i).

(a) CORNER LOCATION
 Meander Cor. of Secs. 4 & 5
 Township 37 North
 Range 9 East of the 4th P.M.
 Town of Pine Lake
 County of Oneida

WISCORS - Oneida County
 N: 193,994.75 USft
 E: 271,658.56 USft
 Datum: NAD 83(2011)
 GNSS Method: RTN - Offset
 GNSS Control: WISCORS VRS



(b) HISTORY OF ORIGINAL CORNER ESTABLISHMENT

Original Surveyor: _____ Original Accessories: _____
 Date of Survey Commenced: _____ See previous monument record(s)
 Completed: _____

(b)(f)(g)(h) Description of monument found at this corner and if it was accepted, state all evidence (material, testimonial, occupational, plats, records, other monuments) used as a basis for accepting. If not accepted or if nothing was found, state evidence used as basis for establishing location. If re-established through lost corner proportionate methods, indicate all monuments, distances and directions used to establish. Indicate type of monument and sign post found or set.

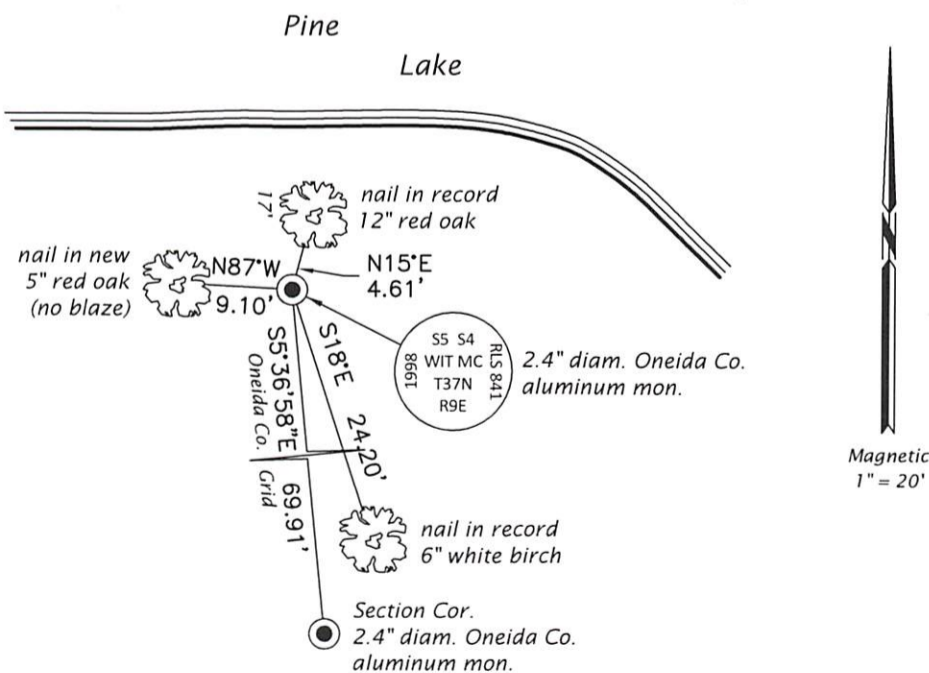
This is a perpetuation of the following monument record(s) that comprise a complete history of the corner:

Jan. 11, 1999: USPLS Monument Record No. 3709050100 by William C. Rohde, PLS

Dec. 11, 2020: I found and accepted the record monument, a 2.4" diam. aluminum pipe with a 3.3" diam. Oneida Co. aluminum cap projecting 4" above the ground surface. A 0.5" diam. iron rod is adjacent to the monument. The record bearing tree at S40°E (#2) has been cut. I found or established accessories as shown below. I found a white vinyl sign post bearing North, 0.5 ft.

The coordinate value shown has been verified by at least one of the following methods: 1) comparison to a previously GPS determined published value; 2) the value is the average of two or more GPS observations at a markedly different time; 3) one or more distances were measured back to the GPS observed corner from temporary GPS observed offset locations.

(c)(d)(e) Plan view of corner with ties to at least 4 witness monuments. If in disagreement with previously established corner, show the distances between the two corners and also indicate the ties to the disputed.



REGISTER OF DEEDS OFFICE
 ONEIDA COUNTY
 FILED

JAN 13 2021

KYLE J. FRANSON
 REGISTER OF DEEDS

(i) I, Jeffrey W. Austin, Professional Land Surveyor No. S-1885, hereby certify that the corner location on this record was determined by me or under my direction and control and that this U.S. Public Land Survey Monument Record is correct and complete to the best of my knowledge and belief.

[Handwritten Signature]

 Signature

15 DEC 2020

 Date