

This form is intended to fulfill the requirements of Chapter A-E 7.08 (3)(a) thru (l) U.S. Public Land Survey Monument Location Record, Wisconsin Administrative Code. Use the reverse side of form for continuation.

**U.S. PUBLIC LAND SURVEY MONUMENT LOCATION RECORD**

Recorders Data

USPLS CORNER: NORTH MC SECTION: 5 TOWNSHIP: 37 NORTH RANGE: 9 EAST

NAME OF WATERWAY FOR M.C. CORNER: NETTIES LAKE SECTION LINE: WEST

(CITY)(VILLAGE)(TOWN) OF: PINE LAKE COUNTY OF: ONEIDA

Description of monument found or placed and all other evidence used as the basis for monument location; including monuments and related measurements required if the corner location was reestablished by lost corner proportionate methods. Also indicate name of original surveyor, original survey date and the corner monument, bearing trees, witness or other reference monuments established; including measured bearing and distance ties, from available records.

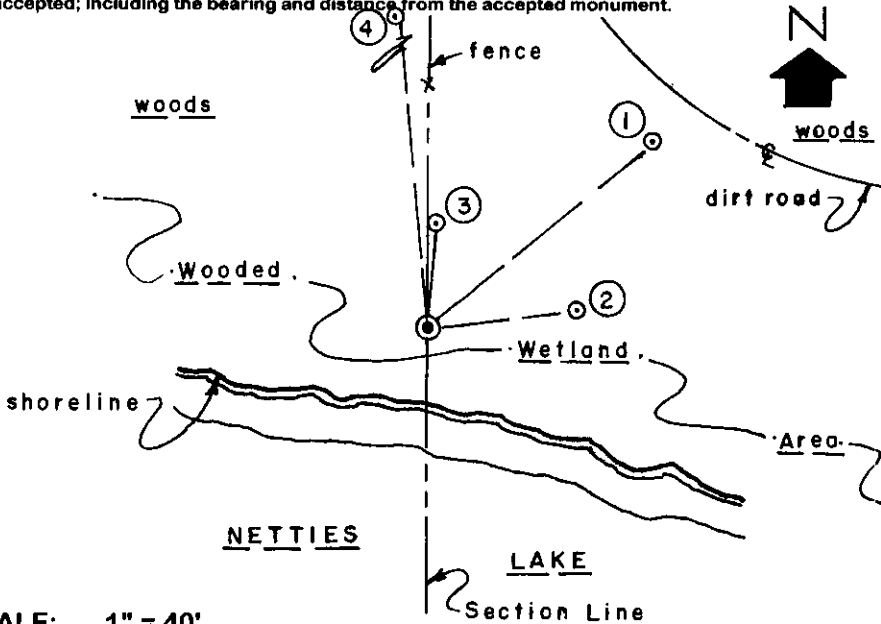
Found and accepted an undisturbed standard 2" dia. aluminum pipe monument with stamped BLM cap 12" above grade in a wooded wetland area on North shore of Netties Lake. Also found a standard white poly 'T' marker post 1 foot North.

In September 1863, William E. Daugherty/GLO set a wood post as the original corner and marked OBTs: a 10" Tamarack S45°E 7 links and a 10" Tamarack S64°W 8 links, all of which are now obliterated.

In June 1980, during a Dependent Resurvey, Michael J. Avery, U.S. Cadastral Surveyor, noted no evidence found for the original GLO meander corner, so a standard 2.5" OD by 30" long aluminum pipe monument with stamped BLM cap was set 24" into the ground as a proportioned new M.C. 45.08 chains North of the SW corner of Section 5 and new BTs noted: a 12" Pn N46°E 92 links scribed "T37N R9E S5 MC BT" and a 20" Pn N09°W 150 links scribed "T37N R9E S6 MC BT"; both BTs found OK and used for new ties below. See BLM notes filed as L-844, Oneida County survey records.

In December 1998, Foltz & Associates, Inc. of Minocqua, Wisconsin also found and noted subject BLM monument and BLM BTs, as a 17" Pr N49°E 60.87' with open scribed face blaze and a 22" Pr N06°W 98.05' with open scribed face blaze and new BTs: a blazed 8" Tamarack N03°E 21.86' with DND sign on upper face and a blazed 6" Spruce N82°E 31.19'; all ties measured to a 40d aluminum nail set in lower right face of old and new BTs. Standard BT sign nailed to upper face of both BLM BTs. I found all as noted and used for witness ties below to complete this location record. The corner falls about 15' North of existing lake shoreline. I painted all BT blazes blaze orange. This recovery completed August 31, 1999; there were no direct witnesses.

Plan view map of monument location with bearing and distance ties to a minimum of four(4) described witness or reference monuments of concrete, natural stone, iron, live bearing trees or equivalent material. If applicable, also show a minimum of two(2) bearing and distance ties to any other monument found and not accepted; including the bearing and distance from the accepted monument.



**WITNESS MONUMENT TIES:**

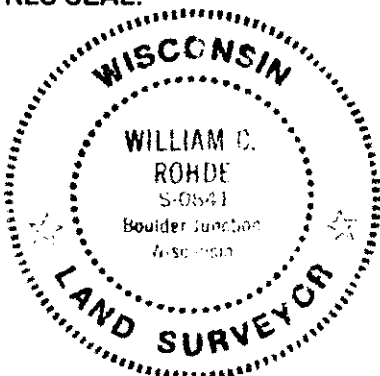
- ① Old BLM Bt 17" Pr with open and scribed face blaze N49°E 60.87'; Std BT sign on upper face.
- ② Old BT 6" Spruce with blazed face N82°E 31.19'.
- ③ Old BT 8" Tam with a blazed face N03°E 21.86'; DND sign on face.
- ④ Old BLM BT 22" Pr with open and scribed face blaze N06°W 98.05'; Std BT sign on upper face.

All ties are to a 40d aluminum spike found in lower right face of each BT. An old fenceline leads North of the corner; accessible by woods road.

SCALE: 1" = 40'

Unless otherwise indicated, all bearing tree ties are to a .25" dia. by 2.5" long PK nail with a 1.25" dia. steel washer driven into unblazed right face and a .25" dia. by 2.5" long PK nail with a 2" dia. steel washer stamped BT is also driven into unblazed face of bearing tree at DBH; the basis for measured bearings is by compass to nearest degree and all tie distances are measured horizontal by steel tape corrected to nearest 1/100th feet at standard temperature of 68° F.

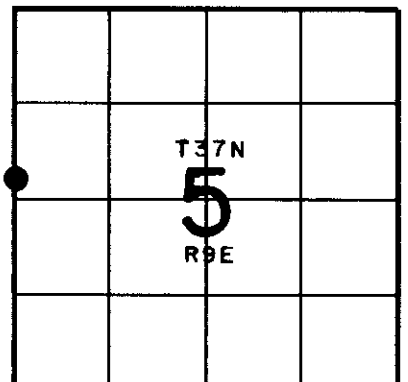
RLS SEAL:



LAND SURVEYOR CERTIFICATE:

I, William C. Rohde, hereby certify that I am duly licensed as a Professional Land Surveyor in the State of Wisconsin; that this USPLS monument location was determined by me and/or under my direct supervision and control; and that this U.S. Public Land Survey Monument Location Record is true and correct to the best of my knowledge and belief.

Signed: *William C. Rohde*  
William C. Rohde RLS 841



SECTION LOCATION MAP

INDEX NO. B C 5