

This form is intended to fulfill the requirements of Chapter A-E 7.08 (3)(a) thru (i) U.S. Public Land Survey Monument Location Record, Wisconsin Administrative Code. Use the reverse side of form for continuation.

U.S. PUBLIC LAND SURVEY MONUMENT LOCATION RECORD

Recorders Data

USPLS CORNER: NORTH MC SECTION: 5 TOWNSHIP: 37 NORTH RANGE: 9 EAST
 NAME OF WATERWAY FOR M.C. CORNER: NETTIES LAKE SECTION LINE: WEST
 (CITY)(VILLAGE)(TOWN) OF: PINE LAKE COUNTY OF: ONEIDA

Description of monument found or placed and all other evidence used as the basis for monument location; including monuments and related measurements required if the corner location was reestablished by lost corner proportionate methods. Also indicate name of original surveyor, original survey date and the corner monument, bearing trees, witness or other reference monuments established; including measured bearing and distance ties, from available records.

Found and accepted an undisturbed standard 2" dia. aluminum pipe monument with stamped BLM cap 4" above grade at this corner. Also found a standard white poly 'T' marker post 1 foot North.

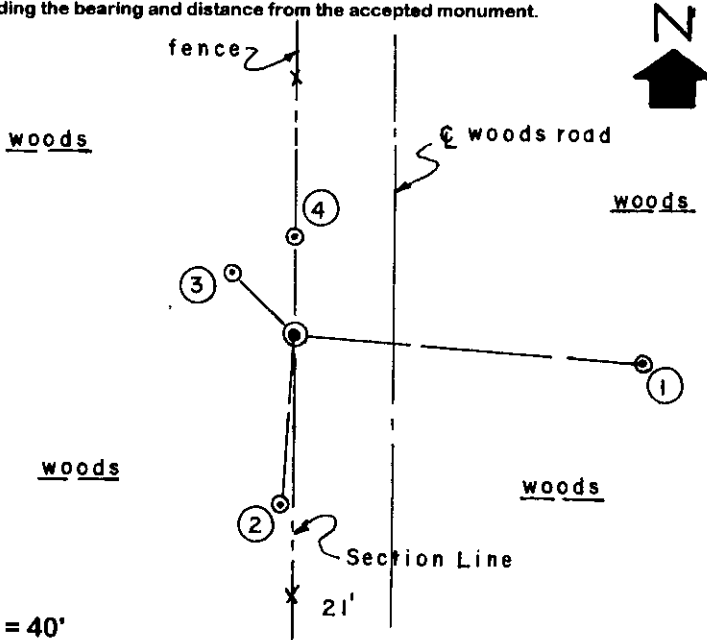
In September 1863, William E. Daugherty/GLO set a wood post as the original corner and marked two OBTs: an 8" Bw N60°E 29 links and an 8" Pw N24°W 19 links, all of which are now obliterated.

In May/June 1980, during a BLM Dependent Resurvey, U.S. Cadastral Surveyor Michael J. Avery noted no evidence for the original GLO corner found, so a standard 2.5" OD by 30" long aluminum pipe monument with stamped BLM cap was set 24" into the ground as a proportioned new MC 59.27 chains North of the SW corner of Section 5 and new BTs were marked: a 6" Spruce scribed "T37N R9E S5 MC BT" at S88°E 111 links and an 8" Spruce scribed "T37N R9E S6 MC BT" at N46°W 27 links.

In December 1998, Foltz & Associates, Inc. of Minocqua, Wisconsin also found and noted subject BLM monument and BLM BTs OK and marked two new BTs, all of which I found and used for witness ties as noted below to complete this location record.

This recovery completed August 31, 1999; there were no direct witnesses. I painted all old BT blazes blaze orange. The corner is accessible via an old woods roadway from the North. An old fence line leads North and South of the corner.

Plan view map of monument location with bearing and distance ties to a minimum of four(4) described witness or reference monuments of concrete, natural stone, iron, live bearing trees or equivalent material. If applicable, also show a minimum of two(2) bearing and distance ties to any other monument found and not accepted; including the bearing and distance from the accepted monument.



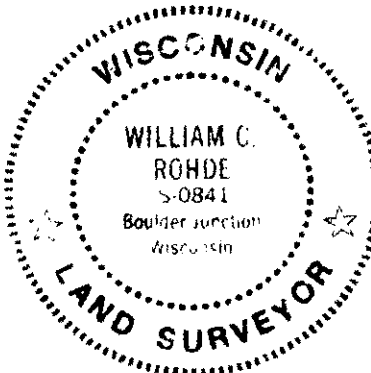
WITNESS MONUMENT TIES:

- ① Old BLM BT 10" Spruce with open & scribed face blaze S86°E 73.22' to a 40d aluminum nail in right face; Std BT sign nailed to upper face.
- ② Old BT 28" Pr with upper & lower face blazes open S03°W 36.15' to 40d aluminum nail in left face.
- ③ Old BLM BT 9" Spruce with open & scribed face blaze N46°W 18.29' to a 40d aluminum nail in left face. Std DND and No Trespass signs on face.
- ④ Old BT 25" Pr with upper & lower face blazes open North 19.96' to 40d aluminum nail in left face.

SCALE: 1" = 40'

Unless otherwise indicated, all bearing tree ties are to a .25" dia. by 2.5" long PK nail with a 1.25" dia. steel washer driven into unblazed right face and a .25" dia. by 2.5" long PK nail with a 2" dia. steel washer stamped BT is also driven into unblazed face of bearing tree at DBH; the basis for measured bearings is by compass to nearest degree and all tie distances are measured horizontal by steel tape corrected to nearest 1/100th feet at standard temperature of 68° F.

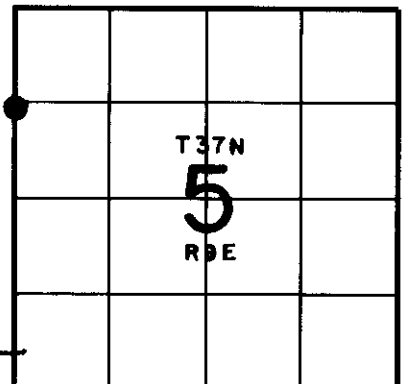
RLS SEAL:



LAND SURVEYOR CERTIFICATE:

I, William C. Rohde, hereby certify that I am duly licensed as a Professional Land Surveyor in the State of Wisconsin; that this USPLS monument location was determined by me and/or under my direct supervision and control; and that this U.S. Public Land Survey Monument Location Record is true and correct to the best of my knowledge and belief.

Signed: *William C. Rohde*
 William C. Rohde RLS 841



SECTION LOCATION MAP

INDEX NO. T37N 5 R9E

Date Signed: February 3, 2000

3709062900