

# U.S. PUBLIC LAND SURVEY MONUMENT RECORD

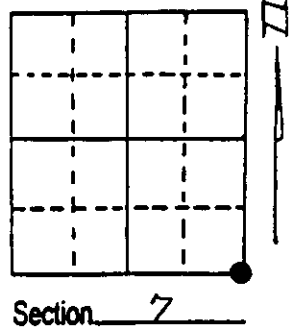
Note: This form is intended and designed to fulfill all requirements of Wisconsin Administrative Code, Chapter A-E 7.08 U.S. Public Land Survey Monument Record (3) (a) (b) (c) (d) (e) (f) (g) (h) (i). An additional sheet may be added if necessary to conform with said requirements.

(a) Corner location: Township 37 North

Range 9 East ~~West~~

Town/City/Village PINE LAKE

County ONEIDA



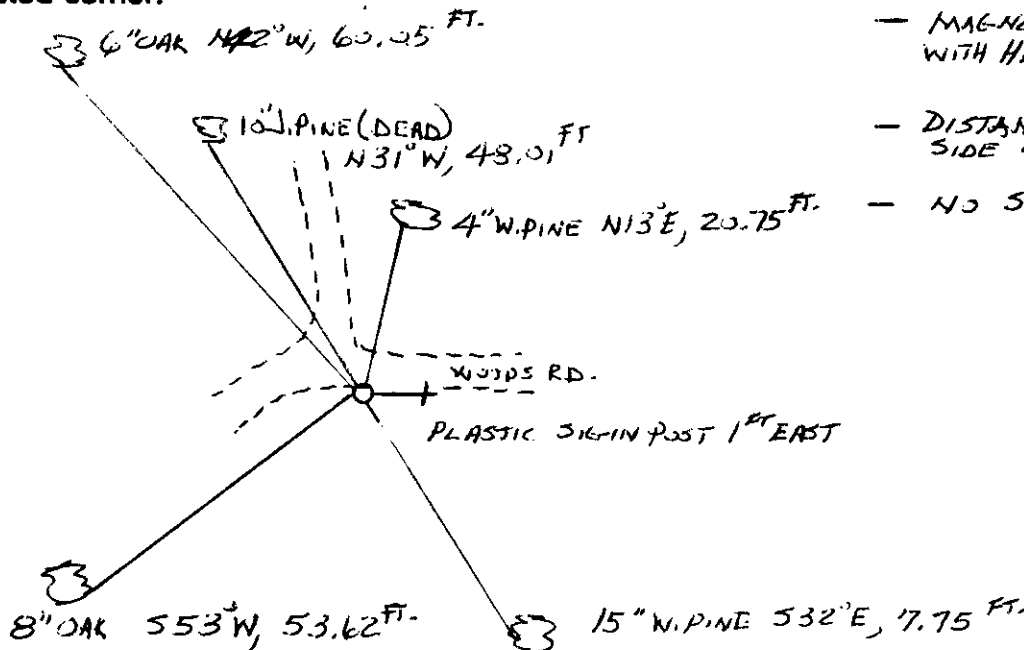
(b) (f) (g) (h) Description of monument found at this corner and if it was accepted, state all evidence (material, testimonial, occupational, plats, records, other monuments) used as a basis for accepting. If not accepted or if nothing was found, state evidence used as basis for establishing location. If reestablished through lost corner proportionate methods, indicate all monuments, distances and directions used to establish. Indicate type of monument found or set and sign post.

-1863 WILLIAM DAUGHERTY ESTABLISHED THIS ORIGINAL CORNER SET WOOD POST WITH BTS: BLK PINE 10 N32W 25 LKS, BLK PINE 10 S29E, 17 LKS.

-1961 NORM LOFTUS (RIPCO) REESTABLISHED FROM ONE ORIG. BT., SET NEW BTS PW 10 S38°E, 11 3/4 LKS., PJ N37°W, 72 3/4 LKS.

-1988 I FOUND NO MONUMENT - FROM BTS BY LOFTUS (1961) I FOUND ROUND HOLE, I SET ONEIDA COUNTY CAPPED MONUMENT AND WITNESSED IT AS SHOWN BELOW.

(c) (d) (e) Plan view of corner with ties to at least 4 witness monuments. If in disagreement with previously established corner, show the distances between the two corners and also indicate the ties to the disputed corner.



- MAGNETIC BEARINGS TAKEN WITH HAND HELD COMPASS

- DISTANCE TO NAIL IN SIDE OF TREE

- NO SCALE

(i) I, DENNIS B. ROBERTS  
 (type or print name) certify that the corner location on this record was determined by me or under my direction and control and that this U.S. Public Land Survey Monument Record is correct and complete to the best of my knowledge and belief.

Dennis B. Roberts 06-01-98  
 Signature Date



Index No. T-5  
 3709 070000

Stamp