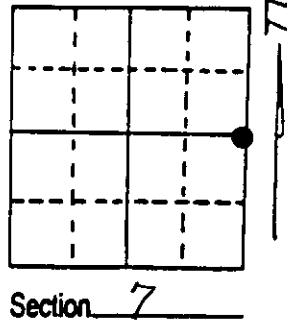


U.S. PUBLIC LAND SURVEY MONUMENT RECORD

Note: This form is intended and designed to fulfill all requirements of Wisconsin Administrative Code, Chapter A-E 7.08 U.S. Public Land Survey Monument Record (3) (a) (b) (c) (d) (e) (f) (g) (h) (i). An additional sheet may be added if necessary to conform with said requirements.

(a) Corner location: Township 37 North
 Range 9 East/West

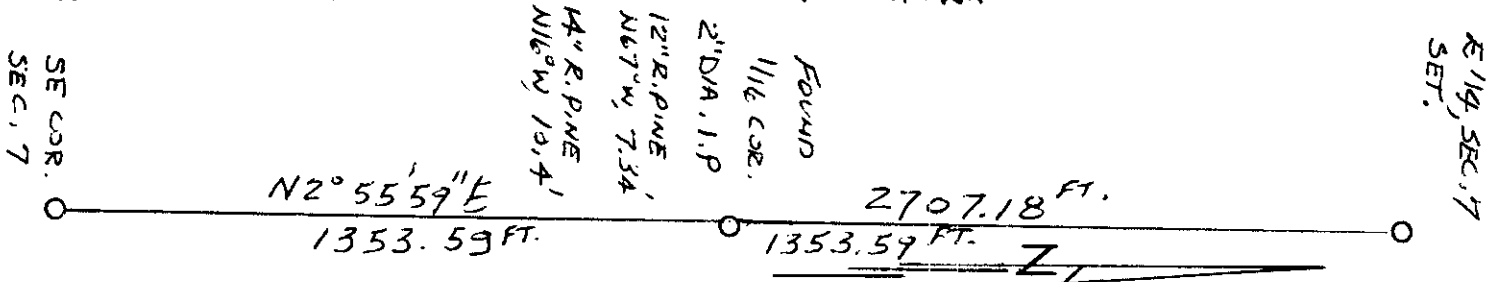
Town/City/Village PINE LAKE
 County ONEIDA



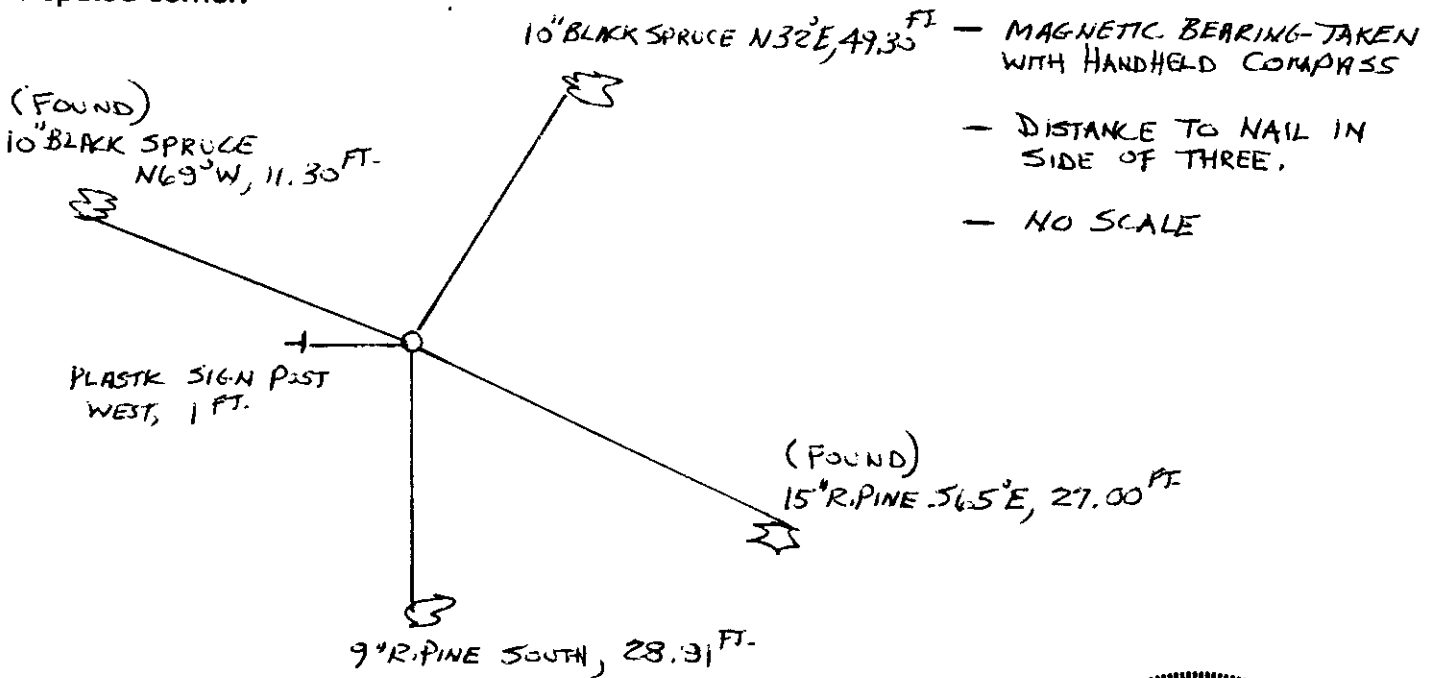
(b) (f) (g) (h) Description of monument found at this corner and if it was accepted, state all evidence (material, testimonial, occupational, plats, records, other monuments) used as a basis for accepting. If not accepted or if nothing was found, state evidence used as basis for establishing location. If reestablished through lost corner proportionate methods, indicate all monuments, distances and directions used to establish. Indicate type of monument found or set and sign post.

- 1863 WILLIAM DAUGHERTY ESTABLISHED THIS ORIGINAL CORNER SET WOOD POST WITH BT'S: SPRUCE 10 S36°W, 15 LKS., J. PINE 12 N62°E, 16 LKS.

- 1998 I ESTABLISHED CORNER BY DOUBLING THROUGH FROM SE CORNER OF SECTION 7 AND 1/16 CORNER TO THE NORTH. I SET ONEIDA COUNTY CAPPED MONUMENT AND WITNESSED IT AS SHOWN.



(c) (d) (e) Plan view of corner with ties to at least 4 witness monuments. If in disagreement with previously established corner, show the distances between the two corners and also indicate the ties to the disputed corner.



(i) I, DENNIS B. ROBERTS
 (type or print name) certify that the corner location on this record was determined by me or under my direction and control and that this U.S. Public Land Survey Monument Record is correct and complete to the best of my knowledge and belief.

Dennis B. Roberts 06-01-98
 Signature Date



Index No. G 5
3709072000

Stamp