

U.S. PUBLIC LAND SURVEY MONUMENT RECORD

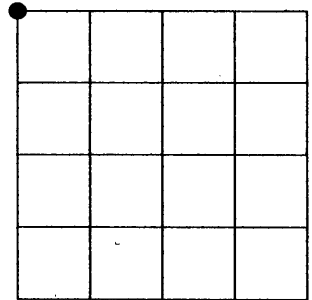
Note: This form is intended and designed to fulfill all requirements of the Wisconsin Administrative Code, Chapter A-E 7.08 U.S. Public Land Monument Record (3)(a)(b)(c)(d)(e)(f)(g)(h)(i). An additional sheet may be added if necessary to conform with said requirements.

(a) CORNER LOCATION:

northwest corner of Section 16
 Township 37 North
 Range 9 East
 Town of Pine Lake
 County of Oneida

COORDINATES

North:
 East:
 Control Station:
 Latitude:
 Longitude:
 Datum Method



SECTION 16

(b) HISTORY OF ORIGINAL CORNER ESTABLISHMENT

Original Surveyor: W.E. Daugherty
 Date of Survey: Commenced August 1863
 Completed August 1863

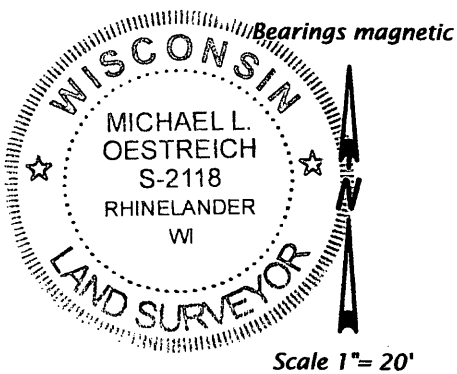
Original B.T.'S
 Yellow Pine 15" dia., N69°E 22 links
 Yellow Pine 8" dia., N45°E 7 links

(f)(g)(h) DESCRIPTION OF MONUMENT FOUND AT THIS CORNER AND IF IT WAS ACCEPTED, STATE ALL EVIDENCE (MATERIAL, TESTIMONIAL, OCCUPATIONS, PLATS, RECORDS, OTHER MONUMENTS) USED AS A BASIS FOR ESTABLISHING LOCATION. IF NOT ACCEPTED OF IF NOTHING WAS FOUND, STATE EVIDENCE USED AS BASIS FOR ESTABLISHING LOCATION. IF REESTABLISHED THROUGH LOST CORNER PROPORTIONATE METHODS, INDICATE ALL MONUMENTS, DISTANCES AND DIRECTIONS USED TO ESTABLISH. INDICATE TYPE OF MONUMENT AND SIGN POST FOUND OR SET.

See previous U.S. Public Land Survey Monument Record J-9 by William Bindow, dated 1/7/94.

Michael L. Oestreich: 1/25/06, Set P.K. Nail in the pavement of Pine Lake Road from witness ties by Bindow. I made new ties to existing witness's as shown in the plan below.

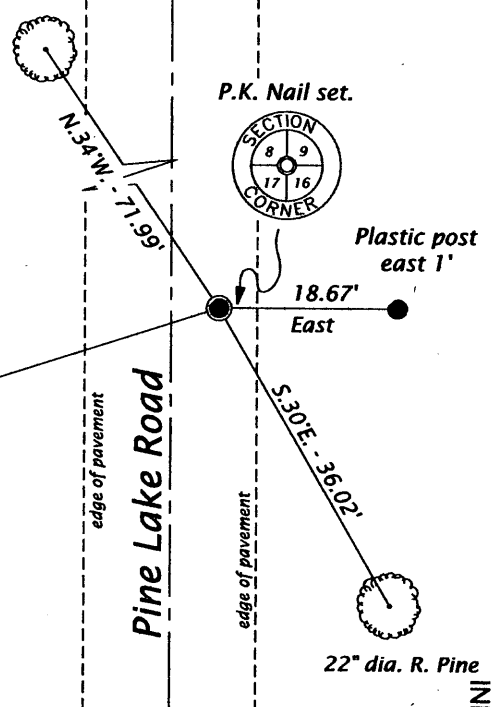
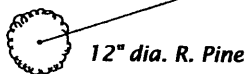
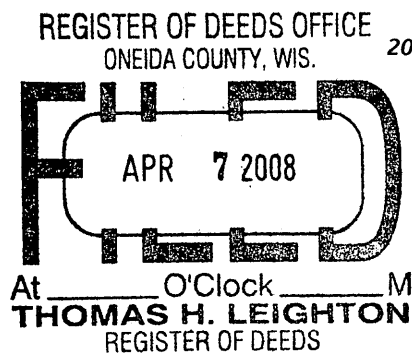
(c)(d)(e) PLAN VIEW OF CORNER WITH TIES TO AT LEAST 4 WITNESS MONUMENTS. IF IN DISAGREEMENT WITH PREVIOUSLY ESTABLISHED CORNER, SHOW THE DISTANCE BETWEEN THE TWO CORNERS AND ALSO INDICATE THE TIES TO THE DISPUTED CORNER.



Scale 1" = 20'

● = 2.4" iron pipe with square top found.

Distances to nail in side of tree.



(i) I, MICHAEL L. OESTREICH, REGISTERED LAND SURVEYOR NO. S-2118 HEREBY CERTIFY THAT THE CORNER LOCATION ON THIS RECORD WAS DETERMINED BY ME OR UNDER MY DIRECTION AND CONTROL AND THAT THIS U.S. PUBLIC LAND SURVEY MONUMENT RECORD IS CORRECT AND COMPLETE TO THE BEST OF MY KNOWLEDGE AND BELIEF.

Michael L. Oestreich
 SIGNATURE

2-14-08
 DATE

3709080000

INDEX NO. J-9