

U.S. PUBLIC LAND SURVEY MONUMENT LOCATION RECORD

Recorders Data

CORNER: West 1/4 SECTION: 9 TOWNSHIP 37 NORTH RANGE 9 EAST ~~WEST~~

FOR M.C. CORNER INDICATE: NAME OF WATERWAY N/A SECTION LINE N/A

~~(CITY/VILLAGE/TOWN)~~ OF: Pine Lake COUNTY OF: Oneida

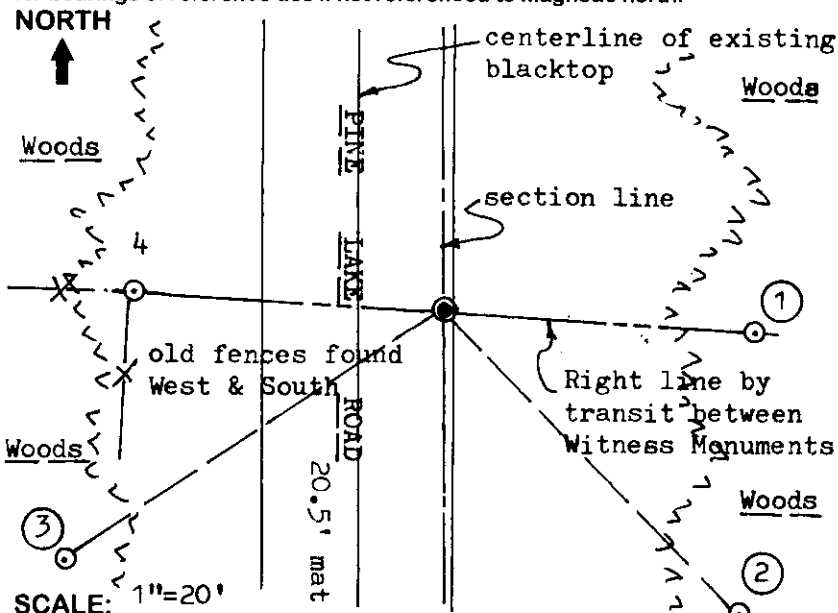
Description of monument found or placed and all other evidence used as a basis for monument location; including all monuments and related measurements required if the corner location is reestablished by lost corner proportionate methods. Also indicate name of original surveyor, survey date, corner monument set and established bearing trees, witness or reference monuments with ties from available records.

No corner monument evidence observed nor detected with metal locator within new blacktop roadway area at this location, so I reset the corner with a 3/4" dia. by 12" long steel shaft with top driven flush in pavement upon the basis of record references noted herein. The corner falls 1.0' West of the East edge of existing blacktop mat.

In 1863, Daugherty/GLO set a wood post as the original corner and marked OBTs, a 10" Pw S26°W 18 lks and a 10" Aspen N18°E 24 lks, all of which are now obliterated. In 1958, per field notes filed in Ripco Book 2 Page 55, Oneida County records, Goddard/Ripco noted this 1/4 corner in East edge of blacktop as well, and set a reference corner monument 48 1/2 links West; he also noted new BTs, a 10" Pr S53°W 1.414 ch, which I found but his tie distance does not check, and a 6" Bw N48°W 92.25 links, now indistinguished. However, a standard 2" dia. iron pipe monument with flat stamped RIPCO brass cap was found undisturbed as noted by Goddard West of the corner which I used for reestablishing the corner location.

In 1973, A.M. Hess noted a reference post by Ripco 33 feet West of this corner and an iron pipe by his survey 33' East of this corner in center of existing North/South roadway, per his Plat of Survey filed as B-2369 in Oneida County records, which I measured between at 64.54 feet as now located. Therefore, I reestablished the corner on a right line with my transit between the found iron pipe monuments at the record older tie distance of 48 1/2 links or 32.01' East of the Ripco capped monument; recovery completed October 9, 1998, no witnesses.

Plan view map of monument location with bearing and distance ties to a minimum of four(4) described witness or reference monuments of concrete, natural stone, iron, live bearing trees or equivalent material. If applicable, also show a minimum of two(2) bearing and distance ties to any other monument found and not accepted; including the bearing and distance from the accepted monument. Indicate the basis for bearings of reference ties if not referenced to magnetic north.



WITNESS MONUMENT TIES:

- ① Uncapped 1 1/4" dia. iron pipe found 4" above grade S86°E 32.53'.
- ② New BT 10" Pw S44°E 44.04'.
- ③ Record BT found, 10" Pr with both upper and lower face blazes open S57°W 47.34'.
- ④ Record 2" dia. iron pipe found with stamped 4" square RIPCO brass cap 11" above grade N86°W 32.01'.

Note: Standard white poly 'T' marker post set 8" East of Witness Monument at 4.

Unless otherwise indicated, all bearing tree ties are to a .25" dia. by 2.5" long PK nail with a 1.25" dia. steel washer driven into unblazed right face and a .25" dia. by 2.5" long PK nail with a 2" dia. steel washer stamped 'BT' is also driven into unblazed face of bearing tree at DBH; the basis for measured bearings is magnetic to nearest degree and all tie distances are horizontal measure to nearest 1/100th feet.

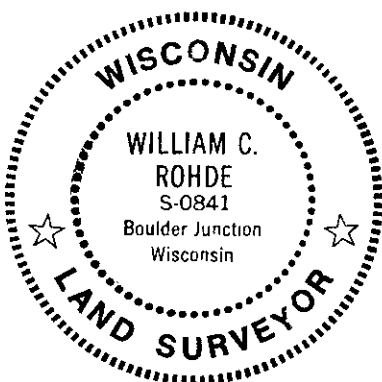
LAND SURVEYOR CERTIFICATION:

I, William C. Rohde, hereby certify that I am a duly licensed Professional Land Surveyor in Wisconsin, that this USPLS monument location was determined by me or under my direction and control, and that this U.S. Public Land Survey Monument Location Record is true and correct to the best of my knowledge and belief.

William C. Rohde Date: 02-10-99
Signature

		9	

INDEX NO.



RLS SEAL

SHEET NO. 1 OF 1

This form is intended to fulfill requirements of Chapter A-E 7.08 (3)(a)(b)(c)(d)(e)(f)(g)(h)(i) U.S. Public Land Survey Monument Location Record, Wisconsin Administrative Code. Use reverse side for geodetic location data and/or continuation purposes.

SECTION LOCATION MAP

INDEX NO. G 9

3709082000