

# U.S. PUBLIC LAND SURVEY MONUMENT LOCATION RECORD

Recorders Data

CORNER: NW Section SECTION: 14 TOWNSHIP 37N NORTH RANGE 9 EAST/WEST

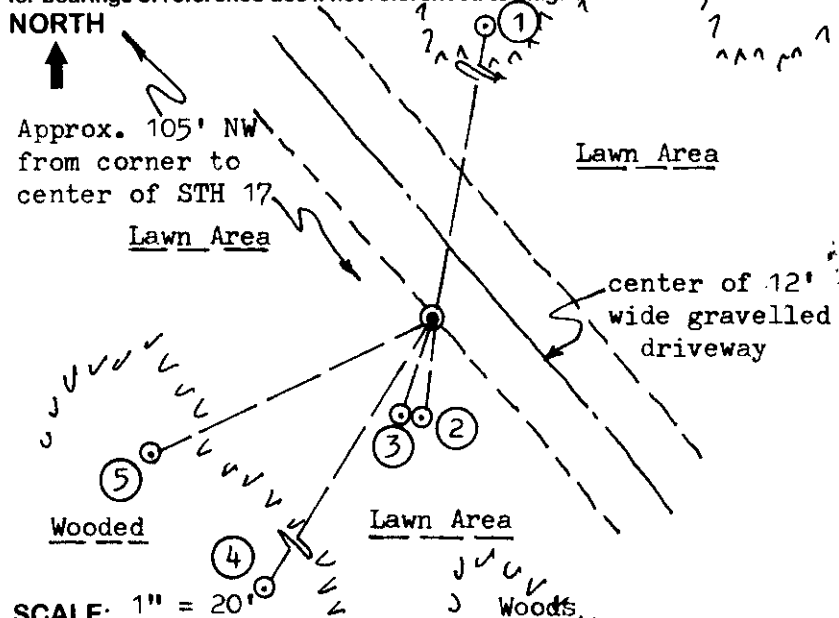
FOR M.C. CORNER INDICATE: NAME OF WATERWAY N/A SECTION LINE N/A

~~(CITY/VILLAGE)~~ (TOWN) OF: Pine Lake COUNTY OF: Oneida

Description of monument found or placed and all other evidence used as a basis for monument location; including all monuments and related measurements required if the corner location is reestablished by lost corner proportionate methods. Also indicate name of original surveyor, survey date, corner monument set and established bearing trees, witness or reference monuments with ties from available records.

Found older yellow painted 2" dia. iron pipe monument at corner with uncapped top tipped 9" below existing grade at southerly edge of existing gravelled driveway to residence at Fire No. 4910. The top of pipe evidenced previous welding, undoubtedly for the flat plat RIPCO cap which was found broken off by T. Loftus in 1993. I excavated around the pipe to a depth of 3 feet or so, but the pipe was much longer and anchored at bottom, so I left it in place as further excavation in the ground water below grade difficult. The old iron pipe was also found bent and tipped, however I was able to distinguish the original vertical cavity face in the subsoil with yellow paint stains, which I accepted as the corner location and set a standard 2" dia. by 30" long aluminum pipe monument with stamped Oneida County cap 2" below grade, which also check measured at 10.0 feet southerly to an iron pipe set by T. Loftus in 1993. The corner falls in existing lawn area, so no standard white poly 'T' marker post was set at request of adjoining owner. In 1863, Daugherty/GLO set a wood post as the original corner and noted OBTs, a 10" Bw S14°E 64 lks and an 8" Bw N58°W 44 lks, all of which are now obliterated. In 1957, N. Loftus noted that the corner had been perpetuated by Dorr, Vaughn and Maine and noted it replaced by an iron pipe with brass cap per his Plat of Survey filed as B-3293 in Oneida County records; and noted similar reference on his Plat of Survey in 1962, filed as B-3292 in Oneida County records. In 1993, T. Loftus notes he found a 2" iron pipe at corner with RIPCO brass cap broken off, per his Plat of Survey filed as B-2734 in Oneida County records. This recovery completed October 9, 1998; there were no witnesses.

Plan view map of monument location with bearing and distance ties to a minimum of four(4) described witness or reference monuments of concrete, natural stone, iron, live bearing trees or equivalent material. If applicable, also show a minimum of two(2) bearing and distance ties to any other monument found and not accepted; including the bearing and distance from the accepted monument. Indicate the basis for bearings of reference ties if not referenced to magnetic north.



### WITNESS MONUMENT TIES:

- ① New BT 7" Pj N09°E 55.20'.
- ② 1" dia. by 24" iron pipe set in place of 1" dia. by 32" long iron pipe found bent 90° at S06°W 10.00'.
- ③ 1 1/2" dia. iron pipe found uncapped and flush with grade S19°W 10.15'.
- ④ New BT 7" Pj S32°W 56.72'.
- ⑤ New BT 10" Pj S64°W 32.88'.

Note: I also measured 2.25' between iron pipe centers at ② and ③

SCALE: 1" = 20'

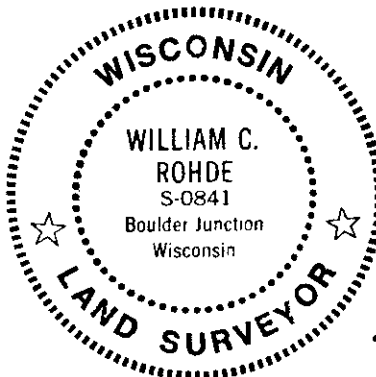
Unless otherwise indicated, all bearing tree ties are to a .25" dia. by 2.5" long PK nail with a 1.25" dia. steel washer driven into unblazed right face and a .25" dia. by 2.5" long PK nail with a 2" dia. steel washer stamped 'BT' is also driven into unblazed face of bearing tree at DBH; the basis for measured bearings is magnetic to nearest degree and all tie distances are horizontal measure to nearest 1/100th feet.

### LAND SURVEYOR CERTIFICATION:

I, William C. Rohde, hereby certify that I am a duly licensed Professional Land Surveyor in Wisconsin, that this USPLS monument location was determined by me or under my direction and control, and that this U.S. Public Land Survey Monument Location Record is true and correct to the best of my knowledge and belief.

*William C. Rohde* Date: 02-10-99  
Signature

		14	



RLS SEAL

SHEET NO. 1 OF 1

This form is intended to fulfill requirements of Chapter A-E 7.08 (3)(a)(b)(c)(d)(e)(f)(g)(h)(i) U.S. Public Land Survey Monument Location Record, Wisconsin Administrative Code. Use reverse side for geodetic location data and/or continuation purposes.

SECTION LOCATION MAP

INDEX NO. 5 17

3769 10 0000

INDEX NO.