

CERTIFIED LAND CORNER RESTORATION

Index No. J-15

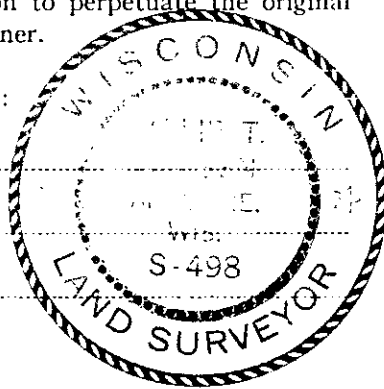
State of Wisconsin }  
County of Oneida } ss.

I Philip T. Hansen, do hereby certify that on the 17th day of December, 1976, I found evidence of the Quarter corner of Section 10 & 15 Township 37, North, Range 9 East, Fourth Principal Meridian, as described hereon; and that from this evidence I established a new monument and accessories as described hereon to perpetuate the original location of this corner.

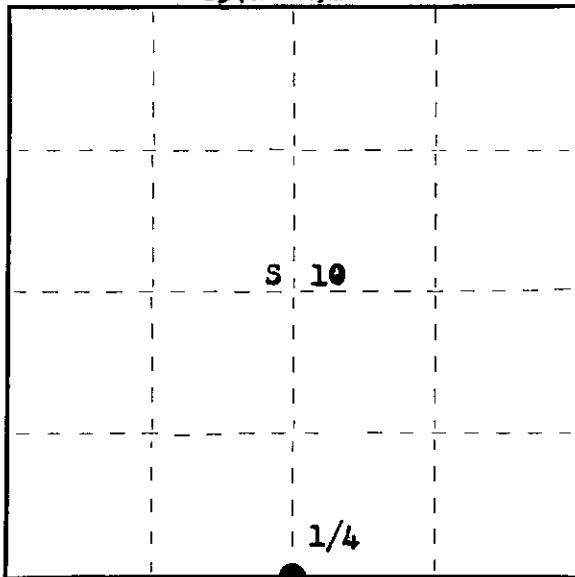
Resident witnesses:

Jin Claflin

Herb Wagoner



T37N R9E



○ = Corner monument restored.

History of original corner establishment:

Original Corner established by Wm. E. Dougherty, Deputy Surveyor, in 1863, from which Aspen 8" bears S 54° E 12 links and Aspen 10" bears N 64° W 8 links.

Corner restored by Goddard and crew, Ripco Surveyors, in 1958. Set iron pipe.

Description of corner evidence found:

Recovered 2" iron pipe with 4" brass cap in good condition and set firmly in ground.

Recovered OBTs - Maple 8" N 24° W 48.5 links, scribing partly visible.  
Maple 10" S 33° E 22.5 links, scribing partly visible.  
No records available on these BTs.

Description of monument and accessories I established to perpetuate the original location of this corner.

As iron pipe was recovered in good condition, it was left in place.  
Monument projects 30" above ground. Cap stamped:  
NBT - Cedar 6" N 82° W 59.3 links, scribed 1/4 BT.

T37N R9E  
1/4 S 10 S 15 1/4  
RIPCO

Dated at Rhineland, Wis., this 23rd day of December, 1976

Signature Philip T. Hansen Title Registered Land Surveyor Registration No. S-498  
(County Surveyor, Registered Land Surveyor, or other duly authorized official)

Office of Register of Deeds, County of Oneida. I hereby certify that the within instrument was filed in this office for record on the 18th day of February, 1977 at 11:00 o'clock a M.

Doree Verage Kuehn  
(Register of Deeds)

By Joseph M. Boomer Deputy

FORM 985 M. C. MILLER CO., MILWAUKEE

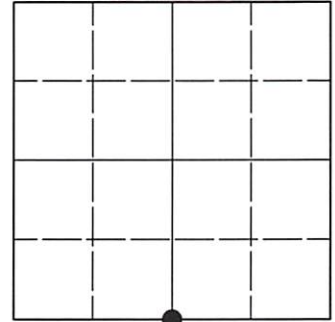
3709100020

# U.S. PUBLIC LAND SURVEY MONUMENT RECORD

Note: This form is intended and designed to fulfill all requirements of Wisconsin Administrative Code, Chapter A-E 7.08 U.S. Public Land Survey Monument Record (3)(a-i).

(a) CORNER LOCATION  
 1/4 Cor. of Secs. 10 & 15  
 Township 37 North  
 Range 9 East of the 4th P.M.  
 Town of Pine Lake  
 County of Oneida

WISCRS - Oneida County  
 N: 188,555.30 USft  
 E: 279,107.97 USft  
 Datum: NAD 83(2011) ep. 2010.00  
 GNSS Method: RTN - Direct  
 GNSS Control: WISCORS VRS



Sec. 10, T. 37 N., R. 9 E.

(b)(f)(g)(h) Description of monument found at this corner and if it was accepted, state all evidence (material, testimonial, occupational, plats, records, other monuments) used as a basis for accepting. If not accepted or if nothing was found, state evidence used as basis for establishing location. If re-established through lost corner proportionate methods, indicate all monuments, distances and directions used to establish. Indicate type of monument and sign post found or set.

*This record is a perpetuation of the following land corner document(s):*

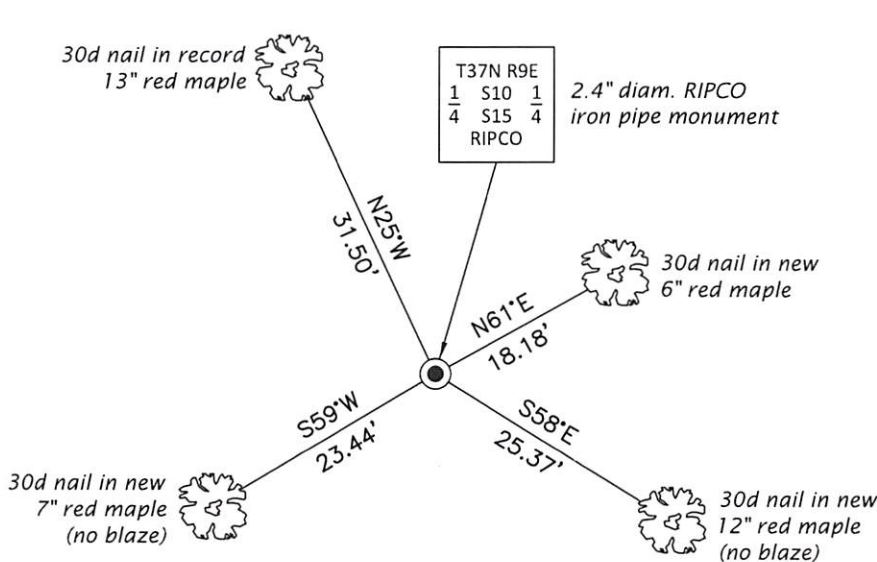
*Dec. 23, 1976: Certified Land Corner Restoration by Philip T. Hansen, filed in Oneida County*

*A complete history of the corner can be found on the previous land corner document(s). I accept the record activity as a true and faithful perpetuation or reestablishment of the original corner location and further perpetuate it as described below.*

*May 16, 2021: I found and accepted the record monument, a 2.4" diam. iron pipe, loosely set, with a 4.0" sq. RIPCO brass plate projecting 28" above the ground surface. The record 10" maple is a stump; the record cedar is lying down. I found or established accessories as shown below. I set a white vinyl sign post bearing South, 0.5 ft.*

*The coordinate value shown has been verified by at least one of the following methods: 1) comparison to a previously GNSS determined published value; 2) the value is the average of two or more GNSS observations at a markedly different time; 3) one or more distances were measured back to the GNSS observed corner from temporary GNSS observed offset locations.*

(c)(d)(e) Plan view of corner with ties to at least 4 witness monuments. If in disagreement with previously established corner, show the distances between the two corners and also indicate the ties to the disputed.



REGISTER OF DEEDS OFFICE  
 ONEIDA COUNTY  
 FILED

JUN 23 2021

KYLE J. FRANSON  
 REGISTER OF DEEDS

(i) I, Jeffrey W. Austin, Professional Land Surveyor No. S-1885, hereby certify that the corner location on this record was determined by me or under my direction and control and that this U.S. Public Land Survey Monument Record is correct and complete to the best of my knowledge and belief.

\_\_\_\_\_  
 Signature MAY 20, 2021 Date