

CERTIFIED LAND CORNER RESTORATION

Index No. G-21

3709112000

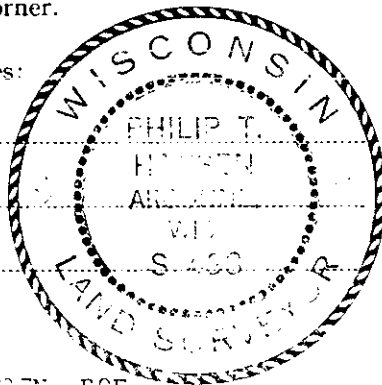
State of Wisconsin }  
County of Oneida } ss.

I, Philip T. Hansen, do hereby certify that on the 10th day of August, 1977, I found evidence of the 1/4 corner of Section 11 & 12 Township 37, North, Range 9 East, Fourth Principal Meridian, as described hereon; and that from this evidence I established a new monument and accessories as described hereon to perpetuate the original location of this corner.

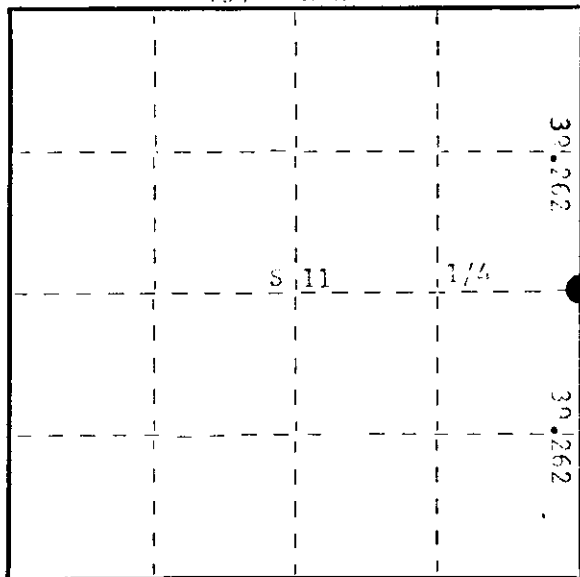
Resident witnesses:

Jim Claflin

Herb Wagnon



FORM 985 H. C. MILLER CO., MILWAUKEE



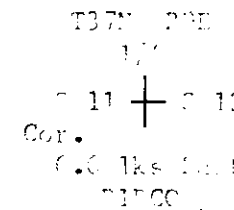
○ = Corner monument restored.

History of original corner establishment:

Corner established by Drivas and crew, Ripco surveyors, in 1962. Ran random line S 1° 07' 19" E, 194' to NE corner a distance of 78.524 chains to close out .1320° chain west of SE corner. Set E 1/4 corner at 30.22 chains intermediate. Marked NBTs - Balsam Fir S55°E, 11 links; Yellow Birch 7" S22°W, 25 links. Corner fell at 8" balsam which is squared. Set 2" iron pipe 6.6 links east. Distances and measurements made to squared balsam.

Description of corner evidence found:

Recovered 2" iron pipe with 3" alloy cap in excellent condition 6.6 links west of 8" squared balsam. Balsam still green, but leaning. Cap stamped: Recovered 2" S55°E, 11.0 links, scribed 1/4 BT. Yellow Birch 7" (8") S22°W, 25.0 links, scribed 1/4 BT.



Description of monument and accessories I established to perpetuate the original location of this corner.

As witness corner was recovered in good condition and balsam (squared) was still green, they were left as recovered.

Marked NBTs - White Birch 8" S62°W, 27.1 links, scribed 1/4 BT. White Birch 12" N65°E, 20.7 links, scribed 1/4 BT. CBT - Balsam S72°W, 16.5 links. CBT - Yellow Birch S13°E, 27.0 links.

to N.C.

Dated at Rhineland, Wis., this 23rd day of September, 1977.

Signature Philip T. Hansen Title Registered Land Surveyor Registration No. 85433  
(County Surveyor, Registered Land Surveyor, or other duly authorized official)

Office of Register of Deeds, County of Oneida. I hereby certify that the within instrument was filed in this office for record on the 12th day of October, 1977 at 9:15 o'clock A M.

Doris Verage Kuehn  
(Register of Deeds)

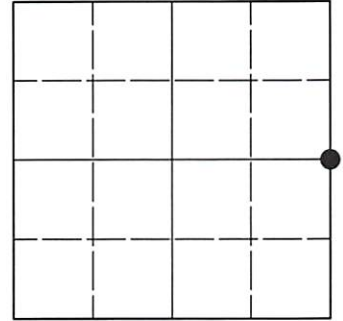
By.....Deputy

# U.S. PUBLIC LAND SURVEY MONUMENT RECORD

Note: This form is intended and designed to fulfill all requirements of Wisconsin Administrative Code, Chapter A-E 7.08 U.S. Public Land Survey Monument Record (3)(a-i).

(a) CORNER LOCATION  
 1/4 Cor. of Secs. 11 & 12  
 Township 37 North  
 Range 9 East of the 4th P.M.  
 Town of Pine Lake  
 County of Oneida

WISCORS - Oneida County  
 N: 191,413.32 USft  
 E: 286,898.08 USft  
 Datum: NAD 83(2011) ep. 2010.00  
 GNSS Method: RTN - Direct  
 GNSS Control: WISCORS VRS



Sec. 11, T. 37 N., R. 9 E.

(b)(f)(g)(h) Description of monument found at this corner and if it was accepted, state all evidence (material, testimonial, occupational, plats, records, other monuments) used as a basis for accepting. If not accepted or if nothing was found, state evidence used as basis for establishing location. If re-established through lost corner proportionate methods, indicate all monuments, distances and directions used to establish. Indicate type of monument and sign post found or set.

*This record is a perpetuation of the following land corner document(s):*

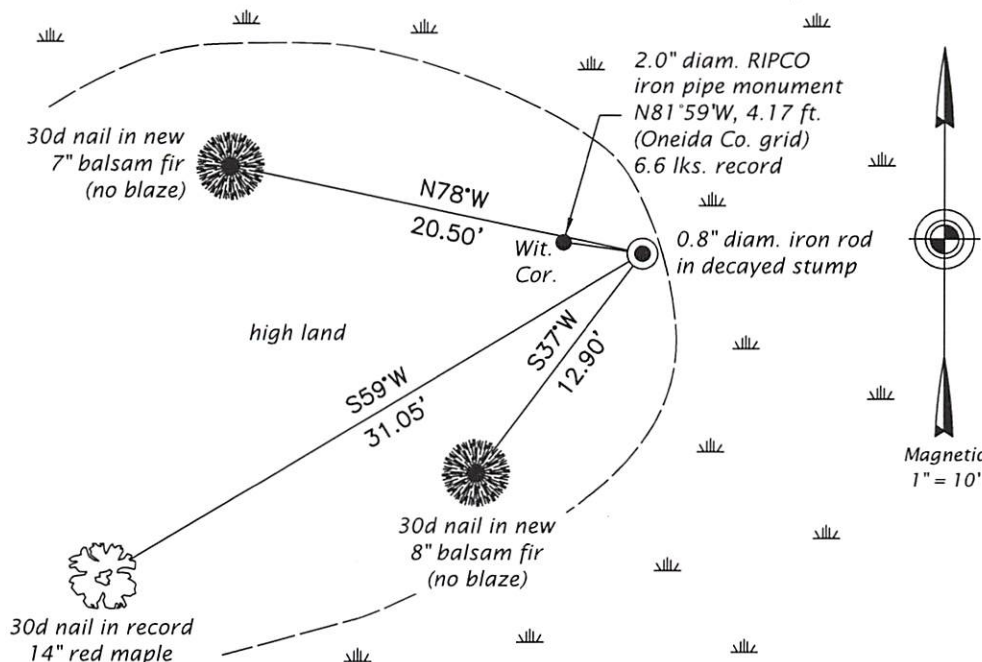
*Sep. 23, 1977: Certified Land Corner Restoration by Philip T. Hansen, filed in Oneida County*

*A complete history of the corner can be found on the previous land corner document(s). I accept the record activity as a true and faithful perpetuation or reestablishment of the original corner location and further perpetuate it as described below.*

*May 16, 2021: I found and accepted a 0.8" diam. iron rod in a decayed stump. Though not in the record, the iron rod's relationship to the record witness corner leads me to believe it was set to monument the actual quarter-section corner. The record birch at S62°W is standing dead. The other record bearing trees are down or now stumps. I found or established accessories as shown below. I set a white vinyl sign post adjacent to the witness corner.*

*The coordinate value shown has been verified by at least one of the following methods: 1) comparison to a previously GNSS determined published value; 2) the value is the average of two or more GNSS observations at a markedly different time; 3) one or more distances were measured back to the GNSS observed corner from temporary GNSS observed offset locations.*

(c)(d)(e) Plan view of corner with ties to at least 4 witness monuments. If in disagreement with previously established corner, show the distances between the two corners and also indicate the ties to the disputed.




REGISTER OF DEEDS OFFICE  
 ONEIDA COUNTY  
 FILED

JUN 23 2021

KYLE J. FRANSON  
 REGISTER OF DEEDS

(i) I, Jeffrey W. Austin, Professional Land Surveyor No. S-1885, hereby certify that the corner location on this record was determined by me or under my direction and control and that this U.S. Public Land Survey Monument Record is correct and complete to the best of my knowledge and belief.

  
 Signature MAY 20, 2021  
 Date