

CERTIFIED LAND CORNER RESTORATION

Index No. J-1

State of Wisconsin }
County of Oneida } ss.

I Philip T. Hansen, do hereby certify that on the 27th day of June, 19 77, I found evidence of the Section corner of Section 12, 7, 13 & 18 Township 37, North, Range 9 & 10E, Fourth Principal Meridian, as described hereon; and that from this evidence I established a new monument and accessories as described hereon to perpetuate the original location of this corner.

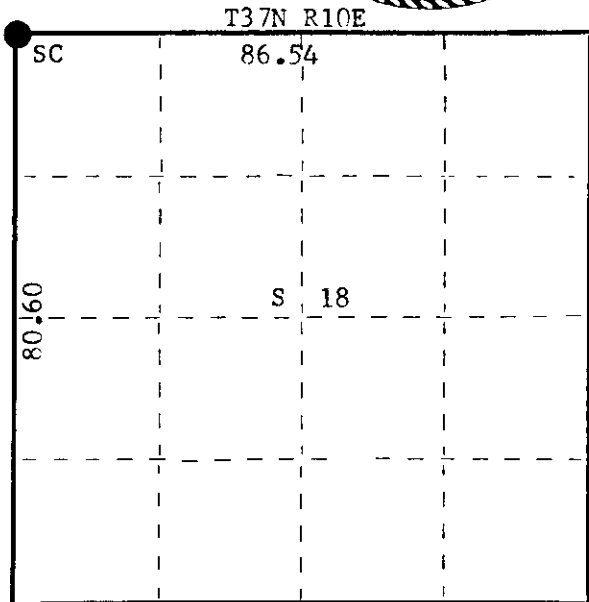
Resident witnesses:

Jim Claflin

Herb Wagoner



FORM 985



○ = Corner monument restored.

History of original corner establishment:

Original Corner established by Hiram Fellows, Deputy Surveyor, in 1860 from which White Pine 12" bears N64°W, 7 links; Maple 7" bears N58°E, 23 links; Yellow Pine 12" bears S33°E, 24 links; Yellow Pine 12" bears S43°W, 28 links. Corner recovered by N. Loftus, Ripco Surveyor, in 1960. Set 1-3/4" iron pipe with 3" brass cap.

Description of corner evidence found:

Recovered 1-3/4" iron pine with 3" brass cap in excellent condition.
Recovered OBTs - Black Spruce 6" S26°W, 26.9 links, scribing not legible.
White Pine 7" N34°E, 40.5 links
Monument projects 28" above ground - cap stamped:

R T37N
9 12.7 R
E 13+18 10
RIPCC E

Description of monument and accessories I established to perpetuate the original location of this corner.
Monument left as recovered.

NBTs - White Pine 10" N80°W, 29.8 links, scribed SC BT.
Red Pine 8" N4°E, 22.0 links, scribed SC BT.

Dated at Rhineland, Wis., this 29th day of June, 19 77.

Signature Philip T. Hansen Title Registered Land Surveyor Registration No. S-498
(County Surveyor, Registered Land Surveyor, or other duly authorized official)

Office of Register of Deeds, County of Oneida, I hereby certify that the within instrument was filed in this office for record on the 8th day of July, 19 77 at 1:30 o'clock P M.

Doris Verage Kuehn
(Register of Deeds)

By Joseph M. Boomer Deputy

3709120000

U S PUBLIC LAND SURVEY MONUMENT RECORD

NOTE: This form is intended and designed to fulfill all requirements of Wisconsin Administrative Code, Chapter A-E 7.08 U.S. Public Land Survey Monument Record (3) (a-i)

A-E 7.08(3)(a) Identity of corner
 SOUTHEAST CORNER OF SECTION 12
 TOWNSHIP 37 NORTH
 RANGE 09 EAST OF THE 4TH PM
 TOWN LINE - PINE LAKE & STELLA
 COUNTY OF ONEIDA

WISCORS - ONEIDA COUNTY
 N: 188,759.259 USft
 E: 291,877.258 USft
 Datum: NAD83 (2011)
 GNSS Method RTN - Direct
 GNSS Control WISCORS VRS



The coordinate value shown has been verified by the average of two or more GPS observations at a markedly different time.

A-E 7.08(3)(b) Description of any record evidence, monument evidence, occupational evidence, testimonial evidence, or any other material evidence.

Original Surveyor: Hiram C. Fellows

Date of Original Survey Commenced: July, 1859
 Completed: _____, 1859

REGISTER OF DEEDS OFFICE
 ONEIDA COUNTY
 FILED

Original Accessories:
 White Pine 12 N. 64° W. 7
 Maple 7 N. 58° E. 23
 Yellow Pine 12 S. 33° E. 24
 Yellow Pine 12 S. 43° W. 28

See Previous Monument Record:
 Index No. J-1

JAN 19 2022

KYLE J. FRANSON
 REGISTER OF DEEDS

1960 - Surveyor 00259 - Norman J. Loftus - Set a 1 3/4" iron pipe with a 3" brass cap.

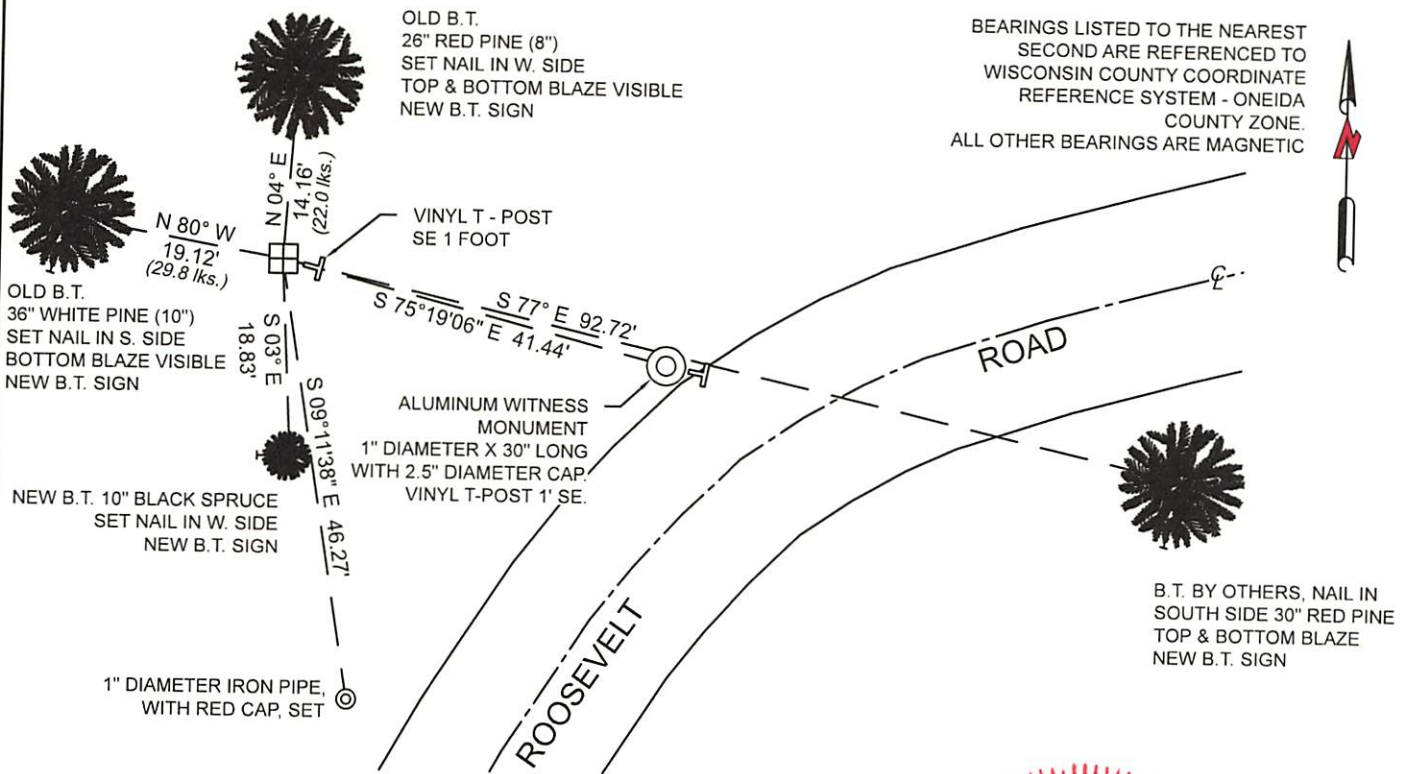
June 29, 1977 - Surveyor 498 - Phillip T. Hansen - Recovered a 1 3/4" iron pipe with a 3" brass cap.

A-E 7.08(3)(f) The corner is a found perpetuated location.

May 26, 2021 - In preparation of a road reconstruction project, I found: a 1 3/4" iron pipe with a 4" x 4" (3") brass cap stamped to identify corner location, ±70 feet west of Roosevelt Road centerline. I also found 2 of Hansen's witnesses intact as shown below.

November 04, 2021 - I returned to the location and found the monument to be the same and intact, and established new witnesses as shown below. By appearance, road reconstruction had not yet occurred.

A-E 7.08(3)(c)(d)(e)(h) Plan view of corner with references to at least 4 witness monuments. If in disagreement with previously established corner, show the distances between the two corners and also indicate the ties to the disputed. The directions and distances to other public land survey corners used as evidence or used for determining the corner location.



BEARINGS LISTED TO THE NEAREST
 SECOND ARE REFERENCED TO
 WISCONSIN COUNTY COORDINATE
 REFERENCE SYSTEM - ONEIDA
 COUNTY ZONE.
 ALL OTHER BEARINGS ARE MAGNETIC

A-E 7.08(3)(i) I, Jeffrey L. DeMuth, Professional Land Surveyor No. S-2656, hereby certify that the corner location on this record was determined by me or under my direction and control and that this U.S. Public Land Survey Monument Record is correct and complete to the best of my knowledge, and belief

Jeffrey L. DeMuth
 SIGNATURE

December 30, 2021
 DATE

