

CERTIFIED LAND CORNER RESTORATION

Index No. **N-18**

State of Wisconsin

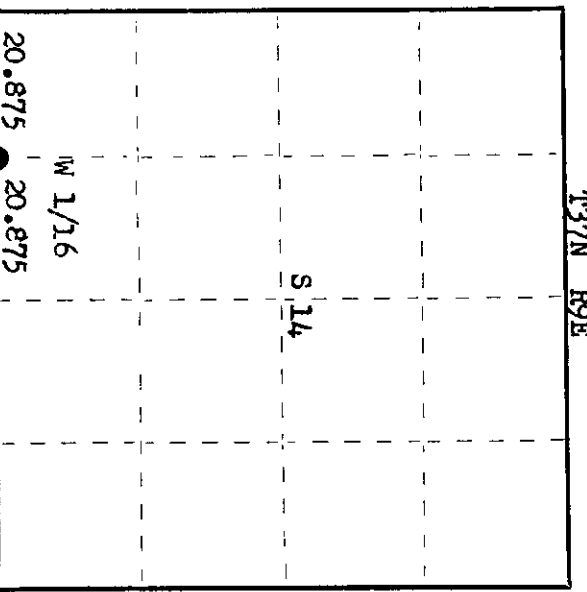
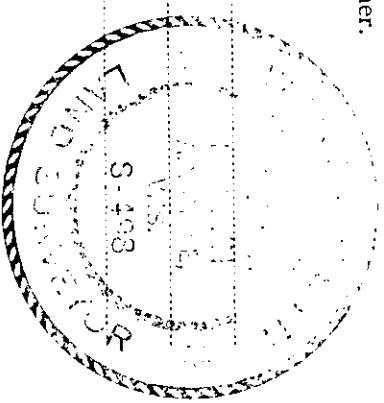
County of Oneida } ss.

I Philip T. Hansen, do hereby certify that on the 11th day of February, 1977, I found evidence of the W 1/16 corner of Section 14 and 23 Township 37, North, Range 9 East, Fourth Principal Meridian, as described hereon; and that from this evidence I established a new monument and accessories as described hereon to perpetuate the original location of this corner.

Resident witnesses:

Jim Clafflin

Herb Wagoner



○ = Corner monument restored.

History of original corner establishment:

Corner re-established by N. Loftus, Ripco Surveyor, in 1955. Ran a random line east from Section Corner 14, 15, 22, 23 a distance of 41.75 chains to close out 1.92 chains south of 1/4 corner. Set W 1/16 at 20.875 chains intermediate at 96 links North.

Set iron pipe with brass cap and marked NBTs - Pine 11" N 85° W 20 feet
Maple 7" N 75° W 27 feet
Maple 6" S 40° W 24 feet

Description of corner evidence found:

Recovered iron pipe 1 1/2" OD with 2" brass cap stamped:
Pipe was bent over but point still in place. Loftus measurements to BTs do not intersect at corner.
Recovered OBT - White Pine 11" (16") N 85° W (N80°W) 30.3 lks. (31.0 lks.)
Maple 7" (8") N70°W 27' (40.1 lks.) scribed 1/16 BT.
Maple 6" (7") S 40° W 24' (41.9 lks.) scribed 1/16 BT S14.
W 1/16 S14
RIPCO

Description of monument and accessories I established to perpetuate the original location of this corner:
Replaced Ripco's iron pipe with a 1" iron pipe with 2" brass cap stamped:
Monument projects 30" above ground.

T37N R9E
W 1/16 S 14
S498-1977

Dated at Rhineland, Wis., this 16th day of March, 1977.

Signature Philip T. Hansen Title Registered Land Surveyor Registration No. S-498
(County Surveyor, Registered Land Surveyor, or other duly authorized official)

Office of Register of Deeds, County of Oneida
Instrument was filed in this office for record on the 23rd day of March, 1977
at 3:00 o'clock P. M.

Terese Terrence Kuehn
(Register of Deeds)

By: _____ Deputy