

CERTIFIED LAND CORNER RESTORATION

Index No. M-21

State of Wisconsin

County of Oneida

} ss.

I Phillip T. Hansen, do hereby certify that on the 14th day of January, 1977, I found evidence of the S 1/16 corner of Section 13 & 14

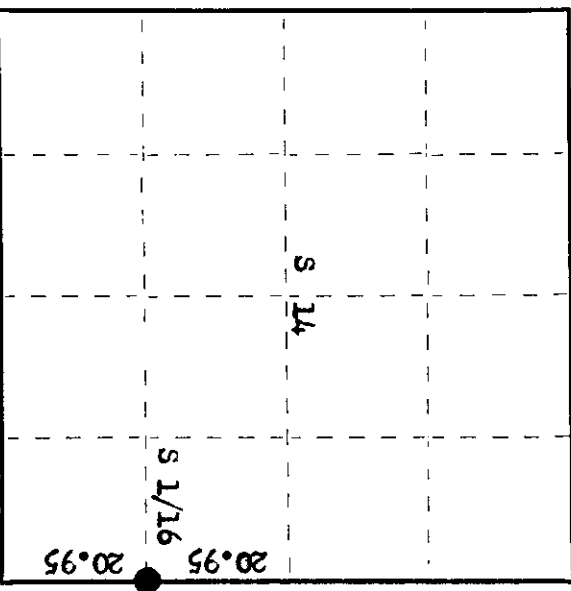
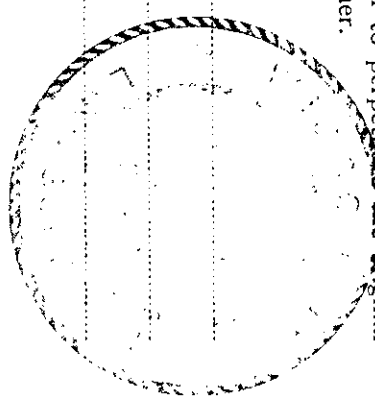
Township 37, North, Range 9 East, Fourth Principal Meridian,

as described hereon; and that from this evidence I established a new monument and accessories as described hereon to perpetuate the original location of this corner.

Resident witnesses:

Jim Clarlin

Herb Wagoner



History of original corner establishment:

Corner established by N. Loftus, Ripco Surveyor, in 1955. Ran random line S 7° W from Section 11, 12, 13 & 14, 83.80 chains to close out 30 links west of old hub in swamp. Set S 1/16 corner at 62.85 chains 22 1/2 links east of random. Set iron pipe. No record of BTs established.

Description of corner evidence found:

Recovered 1 1/2" iron pipe with 2" square brass cap in good condition.
Recovered OBTS - Black Spruce 8" N 86° W 29.6 links, scribed 1/16 BT.
Cedar 12" S 10° E 30.5 links, scribed S 1/16 BT.

Description of monument and accessories I established to perpetuate the original location of this corner.

As monument was recovered in good condition, it was left in place.
Monument projects 30" above ground. Cap stamped:
NBT - Black Spruce 8" N 11° W 14.6 links, scribed 1/16 BT.

T37N R9E
S 1/16
S14 | S13
RIPCO

Dated at Rhineland, Wis. this 18th day of January, 1977.

Signature Phillip T. Hansen Title Registered Land Surveyor Registration No. S-498
(County Surveyor, Registered Land Surveyor, or other duly authorized official)

Office of Register of Deeds, County of Oneida. I hereby certify that the within instrument was filed in this office for record on the 24th day of February, 1977 at 100 o'clock P. M.

Doris Verage Kuehn
(Register of Deeds)

By: _____ Deputy

○ = Corner monument restored.

3709 14/1000