

CERTIFIED LAND CORNER RESTORATION

Index No. N-17

3709 150000

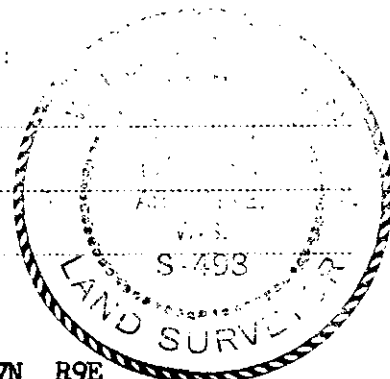
State of Wisconsin }  
County of Oneida } ss.

I Philip T. Hansen, do hereby certify that on the 10th day of February, 1977, I found evidence of the Section corner of S 15, 14, 22, 23 Township 37, North, Range 9 East, Fourth Principal Meridian, as described hereon; and that from this evidence I established a new monument and accessories as described hereon to perpetuate the original location of this corner.

Resident witnesses:

Jim Claflin

Herb Wagoner



History of original corner establishment:

Original Corner established by Wm. E. Dougherty, Deputy Surveyor, in 1863, from which Tamarack 12" bears S 64° W 20 links and Spruce 8" bears N 66° E 20 links.

Corner recovered by B.F. Dorr, County Surveyor, in 1894.

Corner recovered by N. Loftus, Ripco Surveyor, in 1950. Set 2" iron pipe with 4" square brass cap.

Description of corner evidence found:

Recovered 2" iron pipe with a 4" square brass cap in good condition and securely in ground.

Brass cap stamped:

Recovered OBTs - Tamarack 6" S 79° W (S 70° W) 23.5 links.

Tamarack 6" S 58° E 53.5 links, scribed S23 BT.

Monument projects 30" above ground.

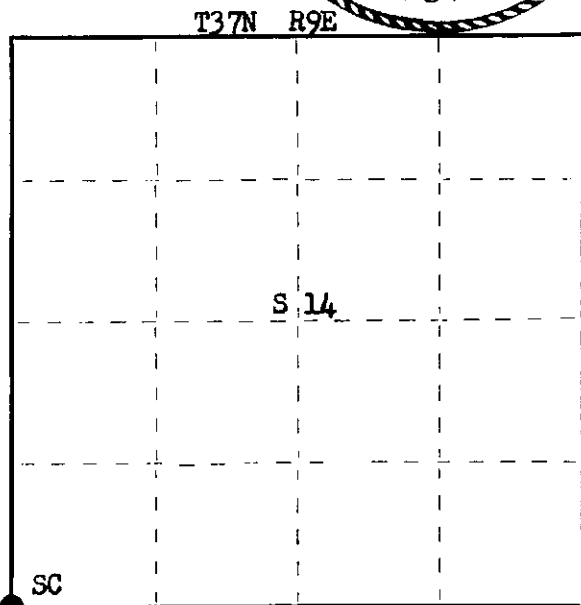
T37N R9E  
15 | 14  
22 | 23  
RIPCO

Description of monument and accessories I established to perpetuate the original location of this corner.

As monument was recovered in good condition, it was left as recovered.

NBTs - Tamarack 6" N 15° W 44.6 links, scribed SC-BT.

Tamarack 7" N 83° W 38.2 links, scribed SC-BT.



○ = Corner monument restored.

Dated at Rhineland, Wis., this 16th day of March, 1977.

Signature \_\_\_\_\_ Title Registered Land Surveyor Registration No. S-498  
(County Surveyor, Registered Land Surveyor, or other duly authorized official)

Office of Register of Deeds, County of Oneida, I hereby certify that the within instrument was filed in this office for record on the 23rd day of March, 1977 at 3:00 o'clock P. M.

Doris Gerage Kuehn  
(Register of Deeds)

By \_\_\_\_\_ Deputy

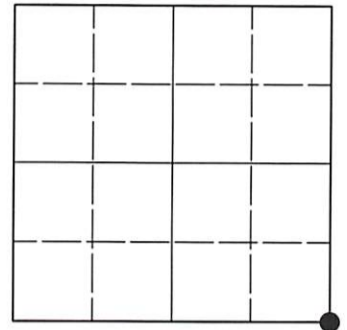
FORM 963 H. C. M. LER CO., WI. 2-1-77

# U.S. PUBLIC LAND SURVEY MONUMENT RECORD

Note: This form is intended and designed to fulfill all requirements of Wisconsin Administrative Code, Chapter A-E 7.08 U.S. Public Land Survey Monument Record (3)(a-i).

(a) CORNER LOCATION  
 Cor. of Secs. 14, 15, 22 & 23  
 Township 37 North  
 Range 9 East of the 4th P.M.  
 Town of Pine Lake  
 County of Oneida

WISCRS - Oneida County  
 N: 183,840.35 USft  
 E: 280,447.44 USft  
 Datum: NAD 83(2011) ep. 2010.00  
 GNSS Method: RTN - Direct  
 GNSS Control: WISCORS VRS



Sec. 15, T. 37 N., R. 9 E.

(b)(f)(g)(h) Description of monument found at this corner and if it was accepted, state all evidence (material, testimonial, occupational, plats, records, other monuments) used as a basis for accepting. If not accepted or if nothing was found, state evidence used as basis for establishing location. If re-established through lost corner proportionate methods, indicate all monuments, distances and directions used to establish. Indicate type of monument and sign post found or set.

*This record is a perpetuation of the following land corner document(s):*

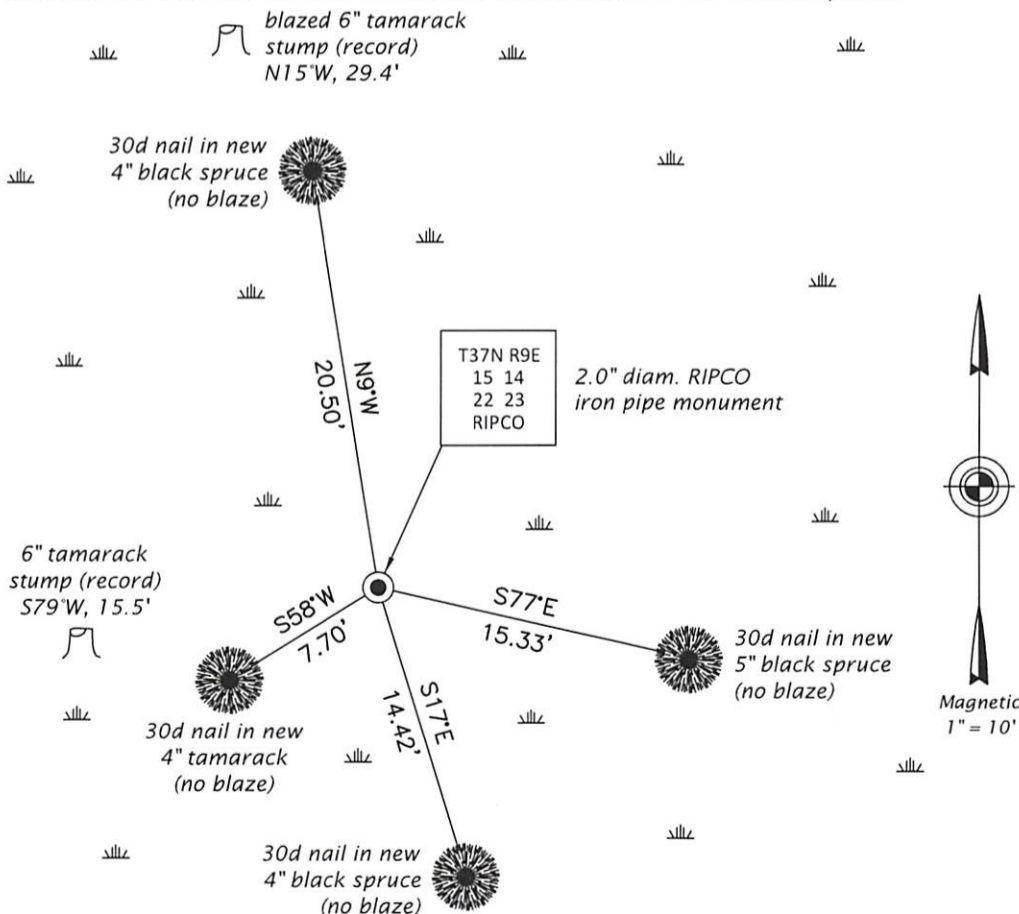
*Mar. 16, 1977: Certified Land Corner Restoration by Philip T. Hansen, filed in Oneida County*

*A complete history of the corner can be found on the previous land corner document(s). I accept the record activity as a true and faithful perpetuation or reestablishment of the original corner location and further perpetuate it as described below.*

*May 18, 2021: I found and accepted the record monument, a 2.0" diam. iron pipe with a 4.0" sq. RIPCO brass plate projecting 12" above the bog surface. I found or established accessories as shown below. I set a white vinyl sign post bearing West, 0.8 ft.*

*The coordinate value shown has been verified by at least one of the following methods: 1) comparison to a previously GNSS determined published value; 2) the value is the average of two or more GNSS observations at a markedly different time; 3) one or more distances were measured back to the GNSS observed corner from temporary GNSS observed offset locations.*

(c)(d)(e) Plan view of corner with ties to at least 4 witness monuments. If in disagreement with previously established corner, show the distances between the two corners and also indicate the ties to the disputed.



REGISTER OF DEEDS OFFICE  
 ONEIDA COUNTY  
 FILED

JUN 23 2021

KYLE J. FRANSON  
 REGISTER OF DEEDS

(i) I, Jeffrey W. Austin, Professional Land Surveyor No. S-1885, hereby certify that the corner location on this record was determined by me or under my direction and control and that this U.S. Public Land Survey Monument Record is correct and complete to the best of my knowledge and belief.

*[Handwritten Signature]*  
 Signature \_\_\_\_\_ Date MAY 20, 2021