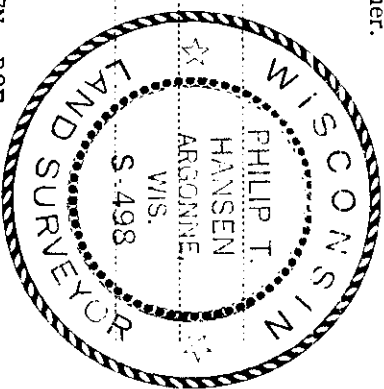


CERTIFIED LAND CORNER RESTORATION

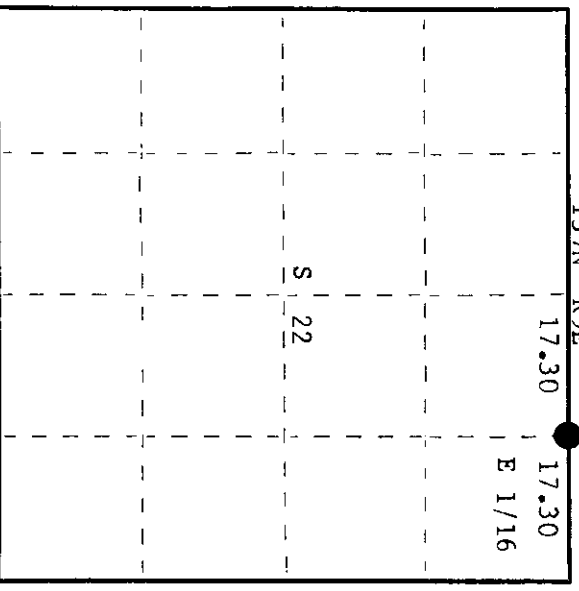
Index No. N-16

State of Wisconsin } ss.
County of Oneida

I Phillip T. Hansen, do hereby certify that on the 27th day of June, 1977, I found evidence of the E 1/16 corner of Section 15 & 22 Township 37, North, Range 9 East, Fourth Principal Meridian, as described hereon; and that from this evidence I established a new monument and accessories as described hereon to perpetuate the original location of this corner.



Resident witnesses:
Jim Clafflin
Herb Wagoner



○ = Corner monument restored.

History of original corner establishment:

Corner established by N. Loftus, Ripco Surveyor, in 1957. Ran random line N77°39'1E from previously established N 1/4 corner 34.60 chains to Section Corner. Set E 1/16 corner at 17.30 chains intermediate. Set iron pipe and marked NBTs - Black Spruce 6" N85°E, 22 1/2 links Black Spruce 7" N83°W, 47 links

Description of corner evidence found:

Recovered 3/4" iron pipe with 2" square brass cap. Corner sets in a spruce and balsam slash. Monument in good condition with large rock cairn around base. Both of the BTs have been completely obliterated.

Description of monument and accessories I established to perpetuate the original location of this corner.

Added T37N R9E to stamping on cap. Now stamped:
Monument projects 30" above ground.
NBTs - White Birch 10" bears N85°E, 43.8 links
White Birch 7" S68°W, 49.0 links, both scribed 1/16 BT.
T37N R9E
S 15
E 1/16
S 122
RIPCO

Dated at Rhineland, Wis., this 29th day of June, 19 77.

Signature Phillip T. Hansen Title Registered Land Surveyor Registration No. S-498
(County Surveyor, Registered Land Surveyor, or other duly authorized official)

Office of Register of Deeds, County of Oneida
I hereby certify that the within instrument was filed in this office for record on the 24 day of July, 19 77 at 1:58 o'clock P. M.

Doree Degeer Fuchs
(Register of Deeds)

By Joseph M. Boomer Deputy

3709150010