

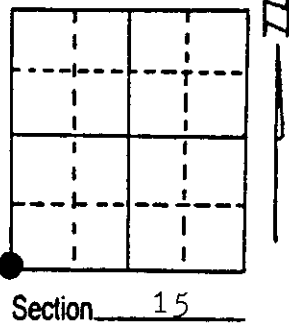
# U.S. PUBLIC LAND SURVEY MONUMENT RECORD

Note: This form is intended and designed to fulfill all requirements of Wisconsin Administrative Code, Chapter A-E 5.02, U.S. Public Land Survey Monument Record (3) (a) (b) (c) (d) (e) (f) (g) (h) (i). An additional sheet may be added if necessary to conform with said requirements.

(a) Corner location: Township 37 North  
 Range 9 East/~~West~~

Town/~~City/Village~~ Pine Lake

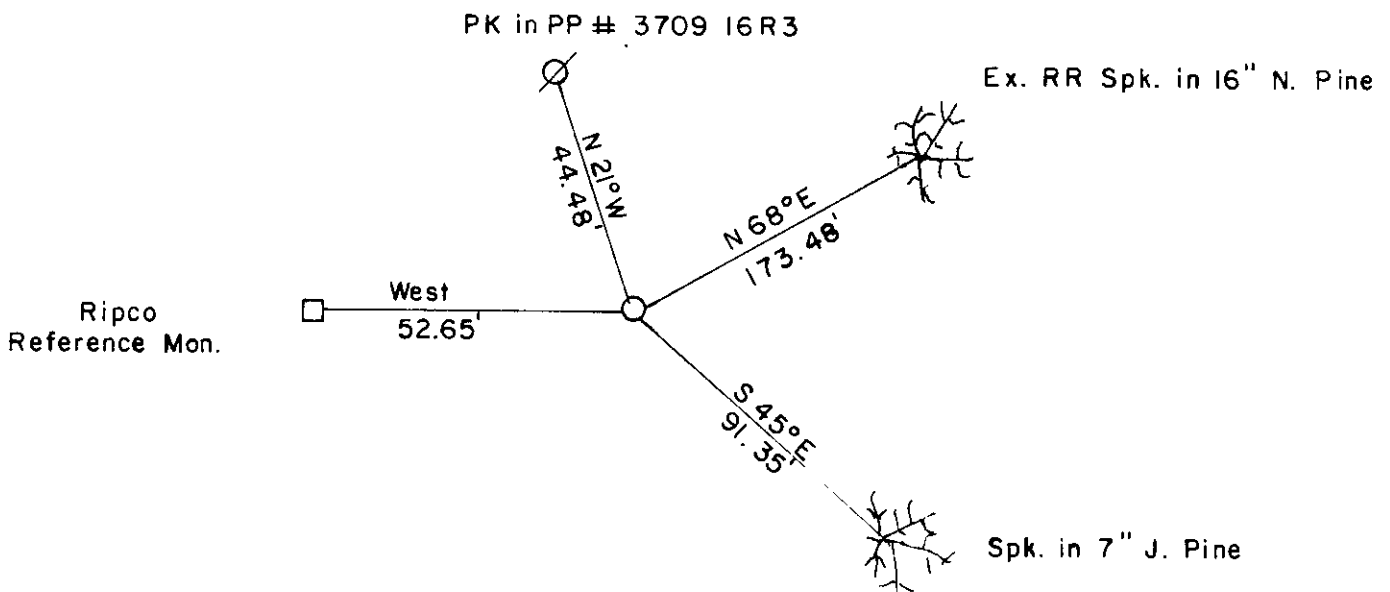
County Oneida



(b) (f) (g) (h) Description of monument found at this corner and if it was accepted, state all evidence (material, testimonial, occupational, plats, records, other monuments) used as a basis for accepting. If not accepted or if nothing was found, state evidence used as basis for establishing location. If reestablished through lost corner proportionate methods, indicate all monuments, distances and directions used to establish.

- 1863 Daugherty North bet 21 and 22 80.00 set corner to 15-16-21-22 Birch 10" N 37 W 23 lks. W Pine 12" S 55 W 24 lks.
- 1906 Vaughen at corner and found W. Pine 12" N 57½ W 94 lks. he made in 1901.
- 1923 Vaughn at corner made BT Tel. pole S 44 E 35 lks. ran East 34.75 ran North 41.18¼ 81.70 NW Corner.
- 1955 Cy Poskie at corner.
- 1958 Ripco at corner.
- 1983 R. Winat at corner.
- 1987 I found a 1" iron pipe in westerly shoulder of S.T.H. 17 made witnesses as shown below.

(c) (d) (e) Plan view of corner with ties to at least 4 witness monuments. If in disagreement with previously established corner, show the distances between the two corners and also indicate the ties to the disputed corner.



(i) I, William E. Bandow  
 (type or print name) certify that the corner location on this record was determined by me or under my direction and control and that this U.S. Public Land Survey Monument Record is correct and complete to the best of my knowledge and belief.

William E. Bandow 12-29-87  
 Signature Date



Index No. N-13

3709160000

# U.S. PUBLIC LAND SURVEY MONUMENT RECORD

NOTE: This form is intended and designed to fulfill all requirements of Wisconsin Administrative Code, Chapter A-E 7.08 U.S. Public Land Survey Monument Record. An additional sheet may be added if necessary to conform with said requirements.

**CORNER LOCATION**

Section Common to Sections 15, 16, 21, and 22  
Township 37 North, Range 9 East of the 4th P.M.  
Town of Pine Lake, Oneida County, Wisconsin

6	5	4	3	2	1
7	8	9	10	11	12
18	17	16	15	14	13
19	20	21	22	23	24
30	29	28	27	26	25
31	32	33	34	35	36

T37N - R9E

**HISTORY OF ORIGINAL CORNER ESTABLISHMENT**

ORIGINAL SURVEYOR: Wm. Daugherty  
DATE OF SURVEY: 1863  
ORIGINAL ACCESSORIES: North between section 21 and 22, at 80.00 chains, set post  
10" Birch, N37°W, 23 lks  
12" W. Pine, S55°W, 24 lks

**DESCRIPTION OF MONUMENT FOUND AT THIS CORNER AND IF IT WAS ACCEPTED, STATE ALL EVIDENCE (MATERIAL, TESTIMONIAL, OCCUPATIONAL, PLATS, RECORDS, OTHER MONUMENTS) USED AS A BASIS FOR ACCEPTING. IF NOT ACCEPTED OR IF NOTHING WAS FOUND, STATE EVIDENCE USED AS BASIS FOR ESTABLISHING LOCATION. IF RE-ESTABLISHED THROUGH LOST CORNER PROPORTIONATE METHODS, INDICATE ALL MONUMENTS, DISTANCES AND DIRECTIONS USED TO ESTABLISH. INDICATE TYPE OF MONUMENT AND SIGN POST FOUND OR SET.**

1987 William Badow reported that numerous surveyors visited corner location. He found a 1" iron pipe in the Westery shoulder of State Hwy "17" and accepted it as the corner location. Made witnesses to a RIPCO monument West, p.k. nail in powerpole, and railroad spikes in two trees.

6/25/2015 Corner location was visited prior to road construction for Deer Trail Road. A 1.25" iron pipe was found on Westery shoulder of road as shown on previous tiesheet. GPS observations were taken on monument and preservation record with Oneida County. GPS Location in Oneida County Grid in NAD 83(2011) N: 182,986.16 E: 275,924.15

10/23/2015 Corner was visited after construction. A 1.25" iron pipe was found on Westery shoulder of road with vinyl sign post approximately 5 feet West. Set three new ties and measured as shown below. Remeasured to one existing tie. Additional GPS observations were taken. GPS Location in Oneida County Grid in NAD 83(2011) N: 182,986.13 E: 275,924.21

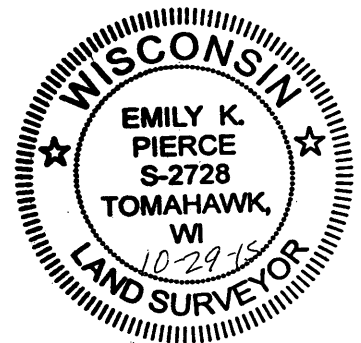
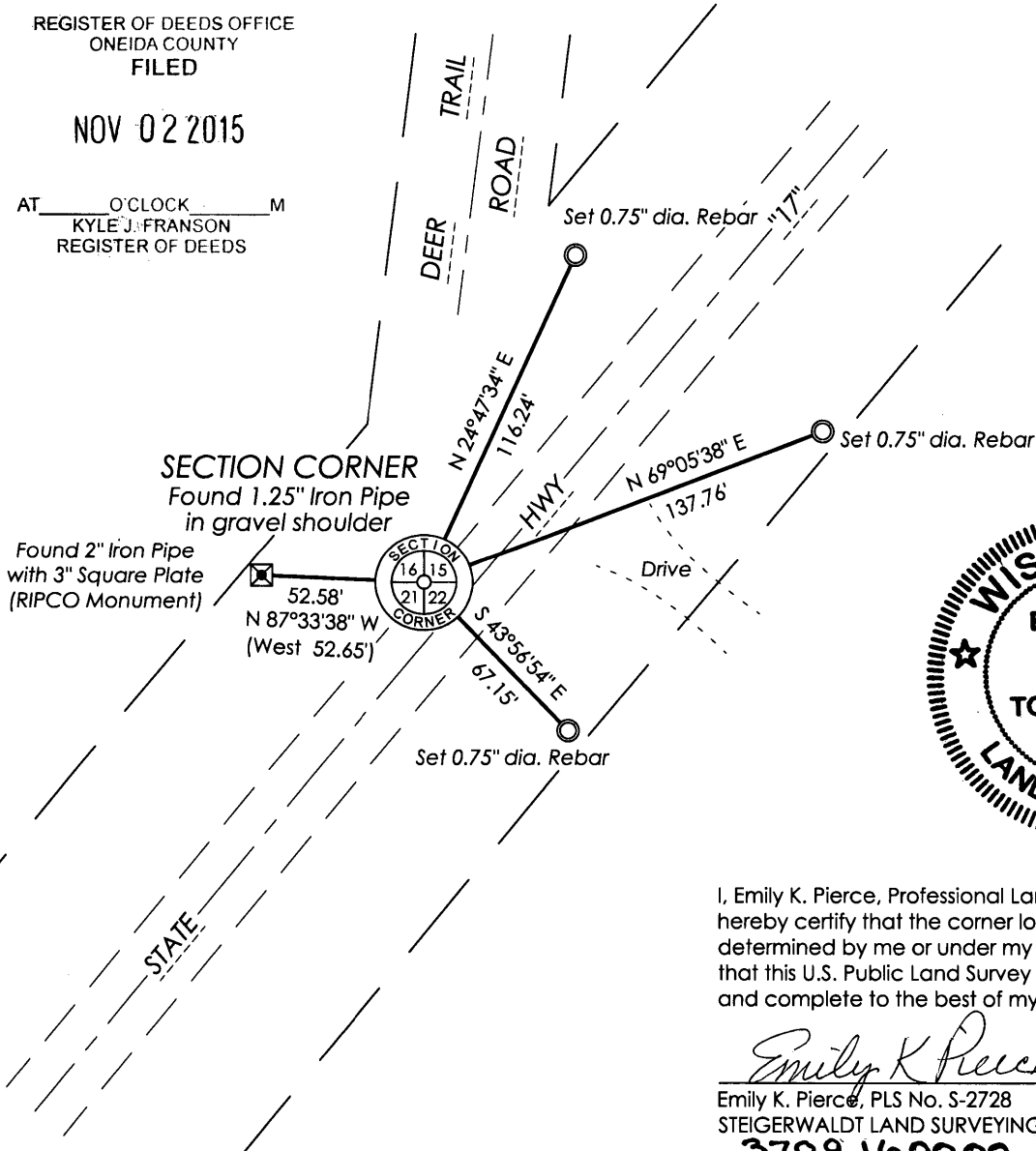
**PLAN VIEW OF CORNER WITH TIES TO AT LEAST 4 WITNESS MONUMENTS. IF IN DISAGREEMENT WITH PREVIOUSLY ESTABLISHED CORNER, SHOW THE DISTANCES BETWEEN THE TWO CORNERS AND ALSO INDICATE THE TIES TO THE DISPUTED.**

REGISTER OF DEEDS OFFICE  
ONEIDA COUNTY  
FILED

NOV 02 2015

AT \_\_\_\_\_ O'CLOCK \_\_\_\_\_ M  
KYLE J. FRANSON  
REGISTER OF DEEDS

SCALE: 1" = 60'  
Bearings Oneida  
County Grid



I, Emily K. Pierce, Professional Land Surveyor No. S-2728, hereby certify that the corner location on this record was determined by me or under my direction and control and that this U.S. Public Land Survey Monument Record is correct and complete to the best of my knowledge and belief.

*Emily K. Pierce*  
Emily K. Pierce, PLS No. S-2728  
STEIGERWALDT LAND SURVEYING, LLC  
3709 160000

7-13