

U.S. PUBLIC LAND SURVEY MONUMENT RECORD

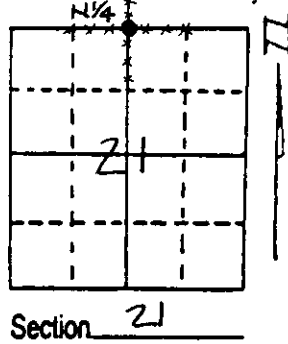
Note: This form is intended and designed to fulfill all requirements of Wisconsin Administrative Code, Chapter A-E 7.08 U.S. Public Land Survey Monument Record (3) (a) (b) (c) (d) (e) (f) (g) (h) (i). An additional sheet may be added if necessary to conform with said requirements.

(a) Corner location: Township 37 North

Range 9 East/~~West~~

Town/City/Village Pine Lake

County Oneida

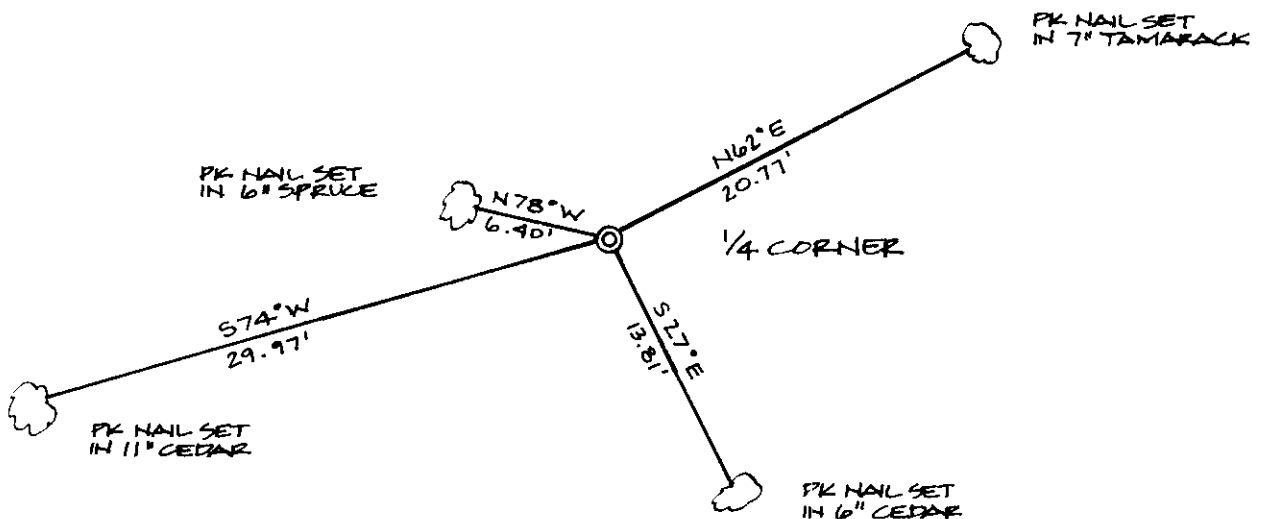


(b) (f) (g) (h) Description of monument found at this corner and if it was accepted, state all evidence (material, testimonial, occupational, plats, records, other monuments) used as a basis for accepting. If not accepted or if nothing was found, state evidence used as basis for establishing location. If reestablished through lost corner proportionate methods, indicate all monuments, distances and directions used to establish. Indicate type of monument found or set and sign post.

August, 1863: William Daugherty set a wood post: 8" Aspen N14°E, 12 Lks; 10" Aspen S10°W, 23 Lks.

September 10, 1992: I found and accepted a wood post point at the intersection of fences north, east, south and west. I replaced wood post with 1"x 36" Oneida County Aluminum Monument. I established witnesses as shown below and set plastic sign post Northeast, 1 foot.

(c) (d) (e) Plan view of corner with ties to at least 4 witness monuments. If in disagreement with previously established corner, show the distances between the two corners and also indicate the ties to the disputed corner.



(i) I, Charles E. Winkler, Reg. Land Surveyor
 (type or print name) certify that the corner location on this record was determined by me or under my direction and control and that this U.S. Public Land Survey Monument Record is correct and complete to the best of my knowledge and belief.

Charles E. Winkler 4/5/93
 Signature Inman-Foltz & Associates, Inc. Date



Index No. N-11

Stamp 3709160020