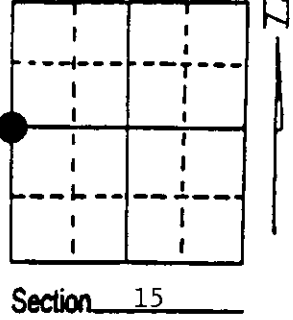


U.S. PUBLIC LAND SURVEY MONUMENT RECORD

Note: This form is intended and designed to fulfill all requirements of Wisconsin Administrative Code, Chapter A-E 7.08 U.S. Public Land Survey Monument Record (3) (a) (b) (c) (d) (e) (f) (g) (h) (i). An additional sheet may be added if necessary to conform with said requirements.

(a) Corner location: Township 37 North
 Range 9 East/West

Town/City/Village Pine Lake
 County Oneida



(b) (f) (g) (h) Description of monument found at this corner and if it was accepted, state all evidence (material, testimonial, occupational, plats, records, other monuments) used as a basis for accepting. If not accepted or if nothing was found, state evidence used as basis for establishing location. If reestablished through lost corner proportionate methods, indicate all monuments, distances and directions used to establish. Indicate type of monument found or set and sign post.

1863 - Wm. Daugherty established this corner at 40.00 chains, set wood post and BTs:
 6" Tamarack, S34°E, 65 Links 6" Tamarack, N49°W, 83 Links

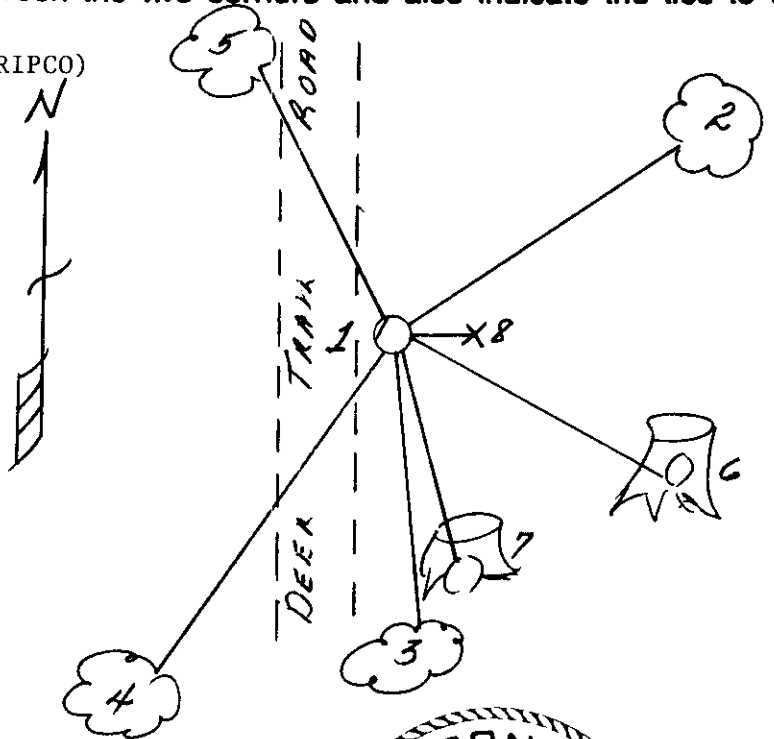
Over the years from 1891 to 1957, numerous surveyors have worked this corner. In 1957 RIPC0 surveyors restored corner by Lost Method and the monument they placed (a 2" x 18" iron pipe/3" square brass cap) and made two BTs:
 10" Tamarack, S50°E, 58½ Links (38.61')
 9" Tamarack, S8°E, 87 Links (57.42')

6/26/1993 - Milo E. Stefan found RIPC0 monument in good condition. Both BTs cut off 20 - 25 years ago and are very decayed stumps.
 We made new BTs and set plastic sign post.

(c) (d) (e) Plan view of corner with ties to at least 4 witness monuments. If in disagreement with previously established corner, show the distances between the two corners and also indicate the ties to the disputed corner.

- 1) 2" x 18" high iron pipe/brass cap (RIPC0)
- 2) 6" Red Maple, N58°E, 53.38'.
- 3) 4" Tamarack, S3°E, 32.99'.
- 4) 8" Tamarack, S38°W, 91.16'.
- 5) 12" Red Pine, N32°W, 70.35'.
- 6) Tamarack Stump, S50°E, 38.6'.
- 7) Tamarack Stump, S8°E, 57.4'.
- 8) Plastic sign post, East, 1.0'.

Distances to nail in side of BTs.
 Stump blaze scribed "BT".



(i) I, Milo E. Stefan
 (type or print name) certify that the corner location on this record was determined by me or under my direction and control and that this U.S. Public Land Survey Monument Record is correct and complete to the best of my knowledge and belief.

Milo E. Stefan June 27, 1993
 Signature Date



Index No. L-13

Stamp 3709162000

U.S. PUBLIC LAND SURVEY MONUMENT RECORD

NOTE: This form is intended and designed to fulfill all requirements of Wisconsin Administrative Code, Chapter A-E 7.08 U.S. Public Land Survey Monument Record. An additional sheet may be added if necessary to conform with said requirements.

CORNER LOCATION

Quarter Corner common to Sections 15 and 16
Township 37 North, Range 9 East of the 4th P.M.
Town of Pine Lake, Oneida County, Wisconsin

REGISTER OF DEEDS OFFICE
ONEIDA COUNTY
FILED

NOV 02 2015

6	5	4	3	2	1
7	8	9	10	11	12
18	17	16	15	14	13
19	20	21	22	23	24
30	29	28	27	26	25
31	32	33	34	35	36

T37N - R9E

HISTORY OF ORIGINAL CORNER ESTABLISHMENT

ORIGINAL SURVEYOR: Wm. Daugherty
DATE OF SURVEY: 1863
ORIGINAL ACCESSORIES: At 40.00 ch, set wood post
6" Tamarak, S34°E, 65 lks
6" Tamarak, N49°W, 83 lks

AT _____ O'CLOCK _____ M
KYLE J. FRANSON
REGISTER OF DEEDS

DESCRIPTION OF MONUMENT FOUND AT THIS CORNER AND IF IT WAS ACCEPTED, STATE ALL EVIDENCE (MATERIAL, TESTIMONIAL, OCCUPATIONAL, PLATS, RECORDS, OTHER MONUMENTS) USED AS A BASIS FOR ACCEPTING. IF NOT ACCEPTED OR IF NOTHING WAS FOUND, STATE EVIDENCE USED AS BASIS FOR ESTABLISHING LOCATION. IF RE-ESTABLISHED THROUGH LOST CORNER PROPORTIONATE METHODS, INDICATE ALL MONUMENTS, DISTANCES AND DIRECTIONS USED TO ESTABLISH. INDICATE TYPE OF MONUMENT AND SIGN POST FOUND OR SET.

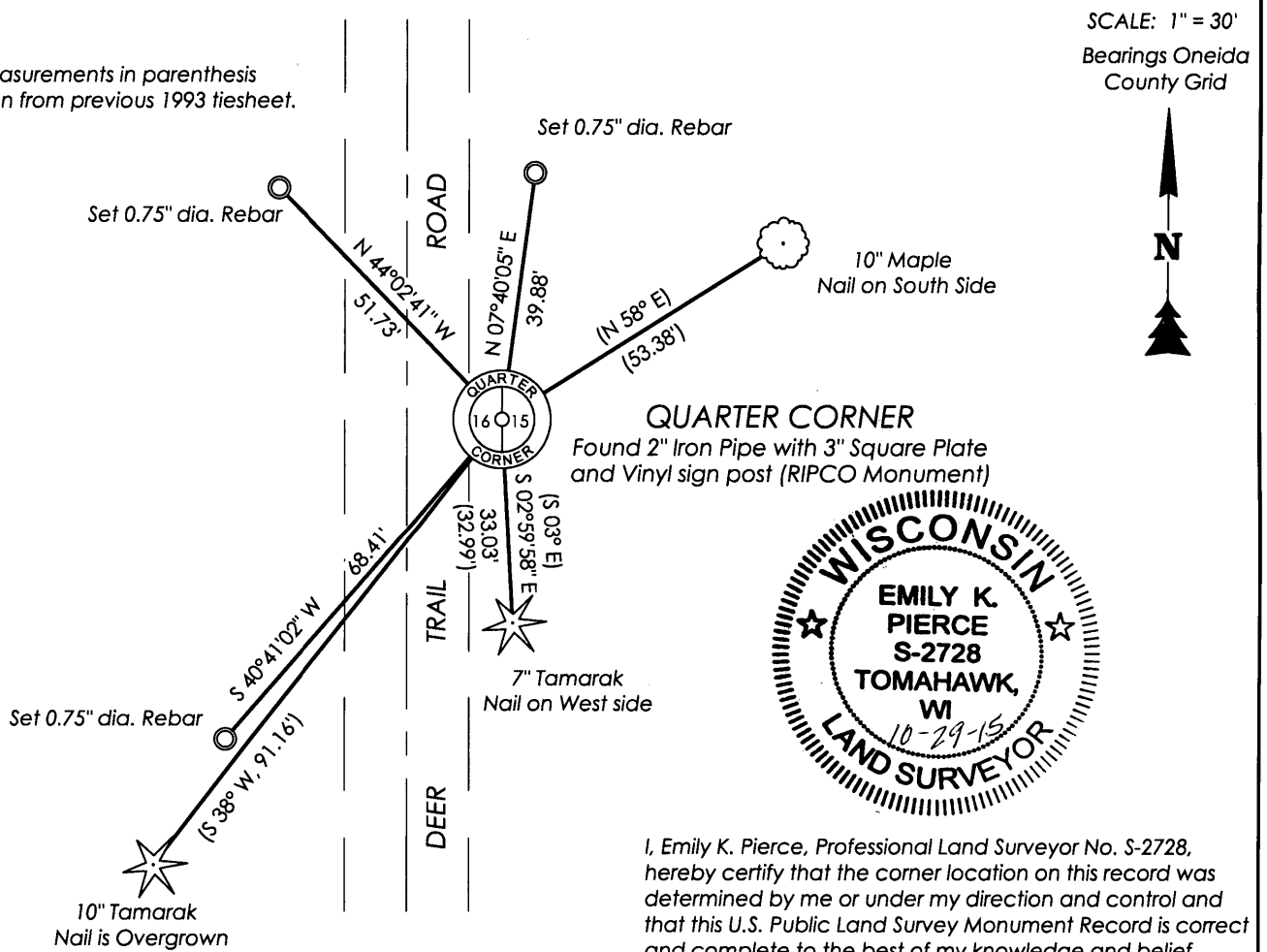
6/26/1993 Milo Stefan reported that "over the years, from 1891 to 1957, numerous surveyors have worked this corner. In 1957, RIPCO surveyors restored corner by Lost Method and the monument they placed (a 2" x 18" iron pipe/3" square brass cap) and made 2 BTs: 10" Tamarack, S50°E, 58 1/2 links (38.61'), 9" Tamarack, S8°E, 87 links (57.42')." Milo Stefan also reports that he found the RIPCO monument in good condition. Both BTs were cut off 20-25 years ago and are very decayed stumps. Added new BTs and set sign post.

6/25/2015 Corner location was visited prior to road construction for Deer Trail Road. A 2" iron pipe with 3" square plate on top (RIPCO Monument) was found on East side of road as shown on previous tiesheet. Monument was loose. GPS observations were taken on monument and preservation record was filed with Oneida County. GPS Location in Oneida County Grid in NAD 83(2011) N: 185,675.72 E: 276,249.84

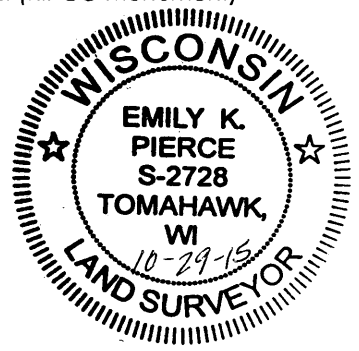
10/23/2015 Corner was visited after construction. RIPCO Monument was found on East side of road with vinyl sign post on East side. Monument was no longer loose. Set three new ties and measured as shown below. Remeasured to one existing tie. Two other previous ties exist, but did not measure. Additional GPS observations were taken. GPS Location in Oneida County Grid in NAD 83(2011) N: 185,675.81 E: 276,250.00

PLAN VIEW OF CORNER WITH TIES TO AT LEAST 4 WITNESS MONUMENTS. IF IN DISAGREEMENT WITH PREVIOUSLY ESTABLISHED CORNER, SHOW THE DISTANCES BETWEEN THE TWO CORNERS AND ALSO INDICATE THE TIES TO THE DISPUTED.

Note: Measurements in parenthesis were taken from previous 1993 tiesheet.



SCALE: 1" = 30'
Bearings Oneida County Grid



I, Emily K. Pierce, Professional Land Surveyor No. S-2728, hereby certify that the corner location on this record was determined by me or under my direction and control and that this U.S. Public Land Survey Monument Record is correct and complete to the best of my knowledge and belief.

Emily K. Pierce

Emily K. Pierce, PLS No. S-2728
STEIGERWALDT LAND SURVEYING, LLC

3709162000

L-13