

CERTIFIED LAND CORNER RESTORATION

Index No. N-7

State of Wisconsin }
County of Oneida } ss.

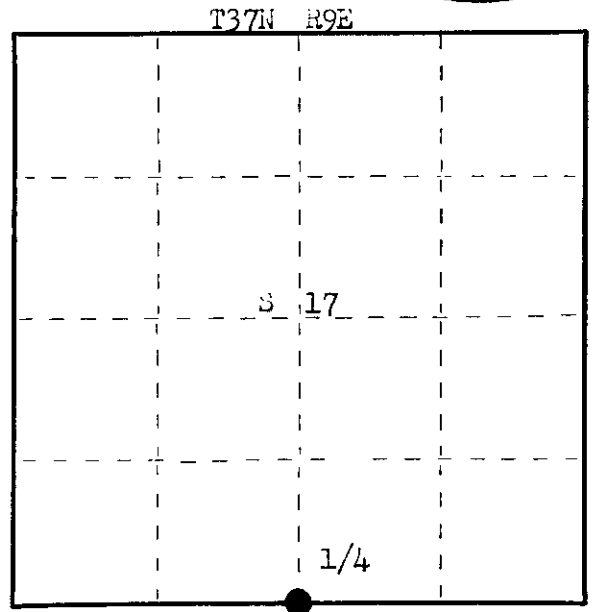
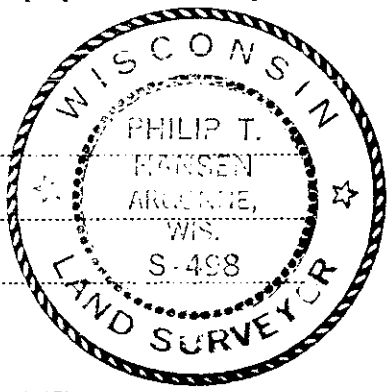
I Philip T. Hansen, do hereby certify that on the 22nd day of April, 1976, I found evidence of the quarter corner of Section 17 and 20 Township 37, North, Range 9 East Fourth Principal Meridian, as described hereon; and that from this evidence I established a new monument and accessories as described hereon to perpetuate the original location of this corner.

Resident witnesses:

Glen Barker

Jim Claflin

Herb Jagoner



○ = Corner monument restored.

History of original corner establishment: Original corner established by Wm. J. Dougherty, Deputy Surveyor, in 1863, from which Birch 18" bears N 91° E 6 lks and Birch 12" bears N 14° W 11 lks.
Corner recovered by Drivas, Ripco surveyor, in 1961. Set RR spike for corner 3" below road surface. Set Witness Corner 25 lks south.
Marked BTs - W. Birch 8" S 55° W 1.285 chains
Maple 6" S 33° W 83 lks.

Description of corner evidence found:

Recovered RR spike below surface of road.
Recovered 2" iron pipe with aluminum cap 25 lks south of corner, stamped.
Recovered GBTs - W. Birch 8" (10") S 55° W 1.285 chs, scribling grown over.
Maple 6" (8") S 33° W 83 lks, scribling partly visible.

T37N R9E
1/4 S 17
S 20
Cor 25 lks North
Ripco

Description of monument and accessories I established to perpetuate the original location of this corner.

Removed iron pipe from ground and put a cross bar at bottom. Replaced monument at same location. Projects 12" above ground.
Drove RR spike 6" below surface of dirt road.
Corner sets in centerline of RR dirt road.
No other suitable trees near for BTs.
Witness Monument and BTs painted blue.

Dated at Rhineland, Wis., this 13th day of July, 1976

Signature Philip T. Hansen Title Registered Land Surveyor Registration No. S-498
(County Surveyor, Registered Land Surveyor, or other duly authorized official)

Office of Register of Deeds, County of Oneida, I hereby certify that the within instrument was filed in this office for record on the 23rd day of July, 1976 at 1:00 o'clock P. M.

Doris Terage Kuehn
(Register of Deeds)

By _____ Deputy

FORM 985 K. C. MILLER CO., MILWAUKEE

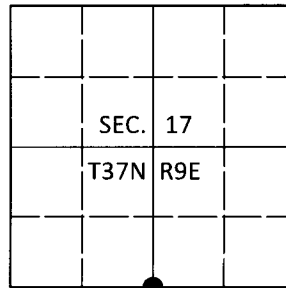
020011676

U.S. PUBLIC LAND SURVEY MONUMENT RECORD

Note: This form is intended and designed to fulfill all requirements of Wisconsin Administrative Code, Chapter A-E 7.08 U.S. Public Land Survey Monument Record (3)(a-i).

(a) CORNER LOCATION
 1/4 Cor. of Secs. 17 & 20
 Township 37 North
 Range 9 East of the 4th P.M.
 Town of Pine Lake
 County of Oneida

WISCRS - Oneida County
 N: 182,871.27 USft
 E: 268,566.13 USft
 Datum: NAD 83(2011)
 GNSS Method: RTN - Direct
 GNSS Control: WISCORS VRS



(b) HISTORY OF ORIGINAL CORNER ESTABLISHMENT

Original Surveyor:

Original Accessories:

Date of Survey Commenced:
 Completed:

See previous monument record(s)

(b)(f)(g)(h) Description of monument found at this corner and if it was accepted, state all evidence (material, testimonial, occupational, plats, records, other monuments) used as a basis for accepting. If not accepted or if nothing was found, state evidence used as basis for establishing location. If re-established through lost corner proportionate methods, indicate all monuments, distances and directions used to establish. Indicate type of monument and sign post found or set.

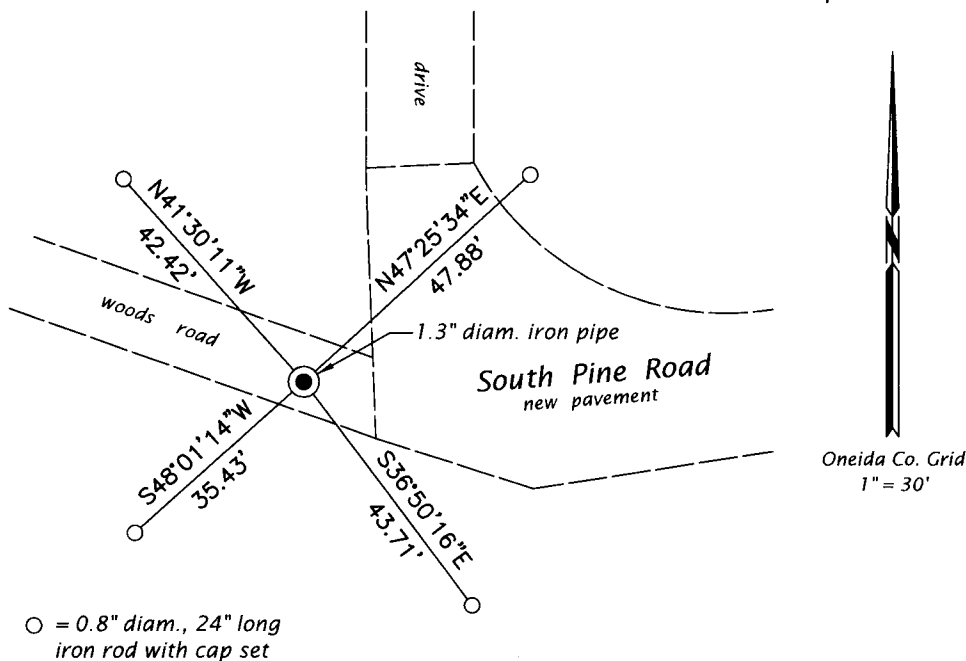
This is a perpetuation of the following monument record(s) that comprise a complete history of the corner:

July 13, 1976: Certified Land Corner Restoration No. 3709170020 by Philip T. Hansen, RLS

Sep. 24, 2019: I found and accepted a perpetuation of the record monument, a 1.3" diam. iron pipe 10" beneath the ground surface. The record birch bearing tree is gone. The record capped iron pipe 25 lks. South is loose and leaning a considerable amount. The record triple maple 12" is in good condition at record bearing and distance. I established accessories as shown below. I found a steel fence post bearing N3°W, 15.1 ft.

The coordinate value shown has been verified by at least one of the following methods: 1) comparison to a previously GPS determined published value; 2) the value is the average of two or more GPS observations at a markedly different time; 3) one or more distances were measured back to the GPS observed corner from temporary GPS observed offset locations.

(c)(d)(e) Plan view of corner with ties to at least 4 witness monuments. If in disagreement with previously established corner, show the distances between the two corners and also indicate the ties to the disputed.



○ = 0.8" diam., 24" long iron rod with cap set

REGISTER OF DEEDS OFFICE
 ONEIDA COUNTY
 FILED

DEC 23 2019

KYLE J. FRANSON
 REGISTER OF DEEDS

(i) I, Jeffrey W. Austin, Professional Land Surveyor No. S-1885, hereby certify that the corner location on this record was determined by me or under my direction and control and that this U.S. Public Land Survey Monument Record is correct and complete to the best of my knowledge and belief.

[Handwritten Signature]

 Signature

3 DEC 2019

 Date

3709170020 (INDEX NO. N-7)