

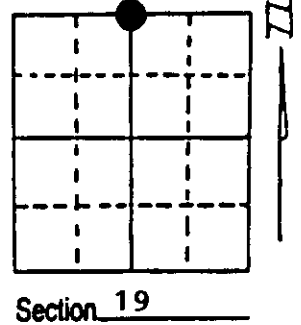
U.S. PUBLIC LAND SURVEY MONUMENT RECORD

Note: This form is intended and designed to fulfill all requirements of Wisconsin Administrative Code, Chapter A-E 7.08 U.S. Public Land Survey Monument Record (3) (a) (b) (c) (d) (e) (f) (g) (h) (i). An additional sheet may be added if necessary to conform with said requirements.

(a) Corner location: Township 37 North
 Range 9 East/West

Town/City/Village PINE LAKE

County ONEIDA



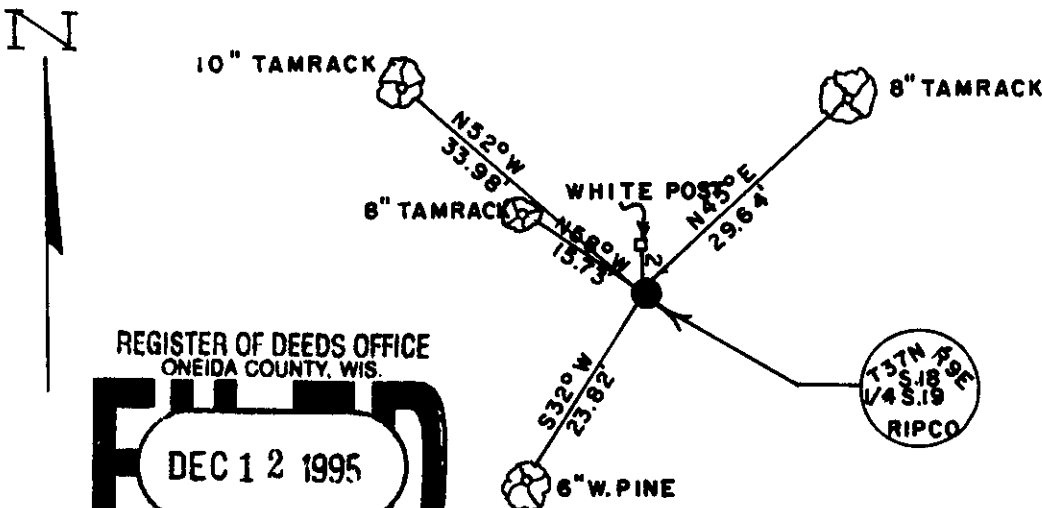
(b) (f) (g) (h) Description of monument found at this corner and if it was accepted, state all evidence (material, testimonial, occupational, plats, records, other monuments) used as a basis for accepting. If not accepted or if nothing was found, state evidence used as basis for establishing location. If reestablished through lost corner proportionate methods, indicate all monuments, distances and directions used to establish. Indicate type of monument found or set and sign post.

1863-William E. Daugherty set $\frac{1}{4}$ post at 42.13 CH. and made B.T.'s: Aspen 8" N 25° W 8 links, Aspen 6" S 31° W 3 links.

1961-N. Loftus Ripco surveyor set South $\frac{1}{4}$ corner for Section 18 and made B.T.'s: Balsam 4" S 26° W 23.3 links, Tamrack 4" N 50° W 51.5 links, 3" Tamrack N 36.5 links.

1994-William E. Bandow found 2" capped iron pipe and witnessed as shown below.

(c) (d) (e) Plan view of corner with ties to at least 4 witness monuments. If in disagreement with previously established corner, show the distances between the two corners and also indicate the ties to the disputed corner.



SCALE: 1" = 20'

NOTE: BEARINGS TAKEN WITH A HANDHELD MAGNETIC COMPASS. DISTANCES MEASURED TO 60 PENNY NAILS SET IN SIDE OF TREES. WHITE POST SET 2' NORTH OF COR.

REGISTER OF DEEDS OFFICE
 ONEIDA COUNTY, WIS.
FILED
 DEC 12 1995
 At 10 O'Clock AM
THOMAS H. LEIGHTON
 REGISTER OF DEEDS

(i) I, WILLIAM E. BANDOW
 (type or print name) certify that the corner location on this record was determined by me or under my direction and control and that this U.S. Public Land Survey Monument Record is correct and complete to the best of my knowledge and belief.

William E. Bandow 12-12-95
 Signature Date



Index No. N-3

Stamp

3709180020