

U.S. PUBLIC LAND SURVEY MONUMENT RECORD

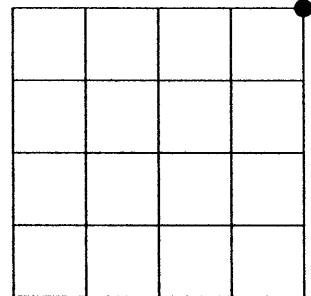
Note: This form is intended and designed to fulfill all requirements of the Wisconsin Administrative Code, Chapter A-E 7.08 U.S. Public Land Monument Record (3)(a)(b)(c)(d)(e)(f)(g)(h)(i). An additional sheet may be added if necessary to conform with said requirements.

(a) CORNER LOCATION:

northeast corner of Section 28
 Township 37 North
 Range 9 East
 Town of Pine Lake
 County of Oneida

COORDINATES

North:
 East:
 Control Station:
 Latitude:
 Longitude:
 Datum Method



SECTION 28

(b) HISTORY OF ORIGINAL CORNER ESTABLISHMENT

Original Surveyor: W.E. Daugherty
 Date of Survey: Commenced August 1863
 Completed September 1863

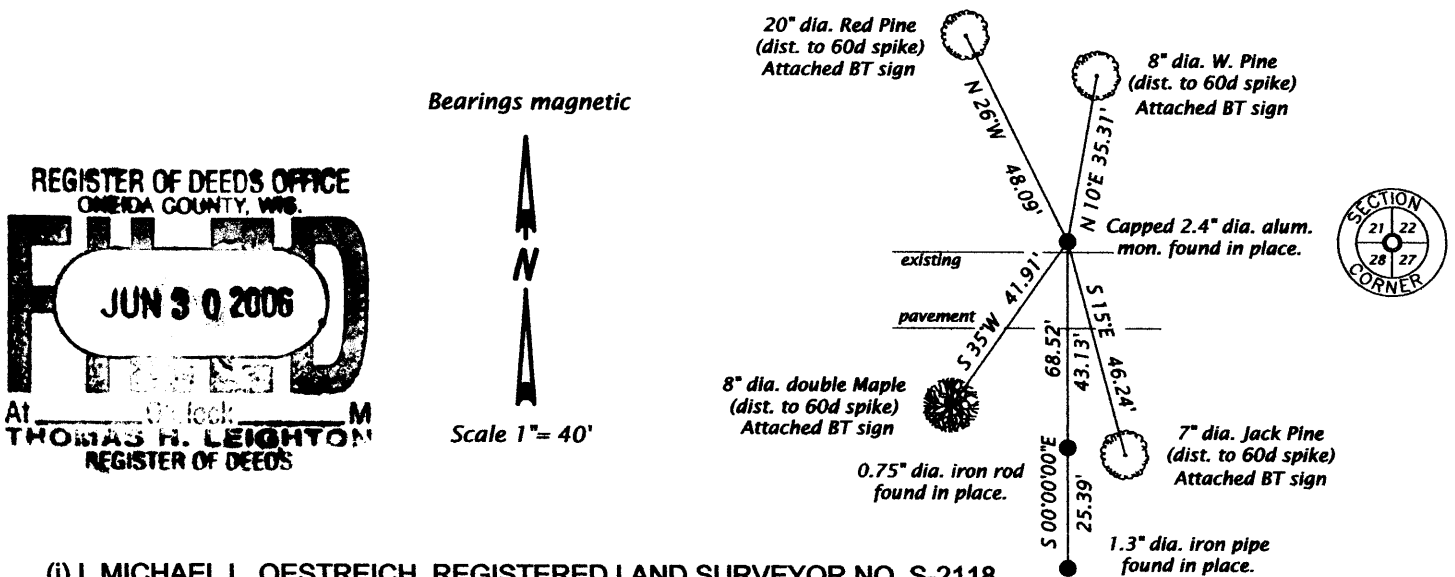
Original B.T.'S
 Birch 10" dia., N37°W 23 links
 W. Pine 20" dia., S55°E 24 links

(f)(g)(h) DESCRIPTION OF MONUMENT FOUND AT THIS CORNER AND IF IT WAS ACCEPTED, STATE ALL EVIDENCE (MATERIAL, TESTIMONIAL, OCCUPATIONS, PLATS, RECORDS, OTHER MONUMENTS) USED AS A BASIS FOR ESTABLISHING LOCATION. IF NOT ACCEPTED OF IF NOTHING WAS FOUND, STATE EVIDENCE USED AS BASIS FOR ESTABLISHING LOCATION. IF REESTABLISHED THROUGH LOST CORNER PROPORTIONATE METHODS, INDICATE ALL MONUMENTS, DISTANCES AND DIRECTIONS USED TO ESTABLISH. INDICATE TYPE OF MONUMENT AND SIGN POST FOUND OR SET.

See previous U.S. Public Land Survey Monument Record R-13 by William E. Bandow, dated November 3 1988.

Michael L. Oestreich: April 21st, 2005, I recovered a capped aluminum monument 6" inches below grade, and on the north edge of existing pavement of East Balsam Lane. Because of proposed road construction in the area I measured to the existing bearing trees and made additional ties to witness monuments as shown in the plan below. May 17th 2006, after completion of road construction project, I revisited the corner and checked the witness ties, I confirmed that the monument had not been disturbed during road construction activities.

(c)(d)(e) PLAN VIEW OF CORNER WITH TIES TO AT LEAST 4 WITNESS MONUMENTS. IF IN DISAGREEMENT WITH PREVIOUSLY ESTABLISHED CORNER, SHOW THE DISTANCE BETWEEN THE TWO CORNERS AND ALSO INDICATE THE TIES TO THE DISPUTED CORNER.



REGISTER OF DEEDS OFFICE
 ONEIDA COUNTY, WIS.
FILED
 JUN 30 2006
 At _____ of _____ M
 THOMAS H. LEIGHTON
 REGISTER OF DEEDS

(i) I, MICHAEL L. OESTREICH, REGISTERED LAND SURVEYOR NO. S-2118
 HEREBY CERTIFY THAT THE CORNER LOCATION ON THIS RECORD
 WAS DETERMINED BY ME OR UNDER MY DIRECTION AND CONTROL
 AND THAT THIS U.S. PUBLIC LAND SURVEY MONUMENT RECORD IS
 CORRECT AND COMPLETE TO THE BEST OF MY KNOWLEDGE AND
 BELIEF.

Michael L. Oestreich
 SIGNATURE
 6/16/06
 DATE

WISCONSIN
 MICHAEL L. OESTREICH
 S-2118
 MINOCQUA, WI
 LAND SURVEYOR
 3709 21 00 00

INDEX NO. R 13